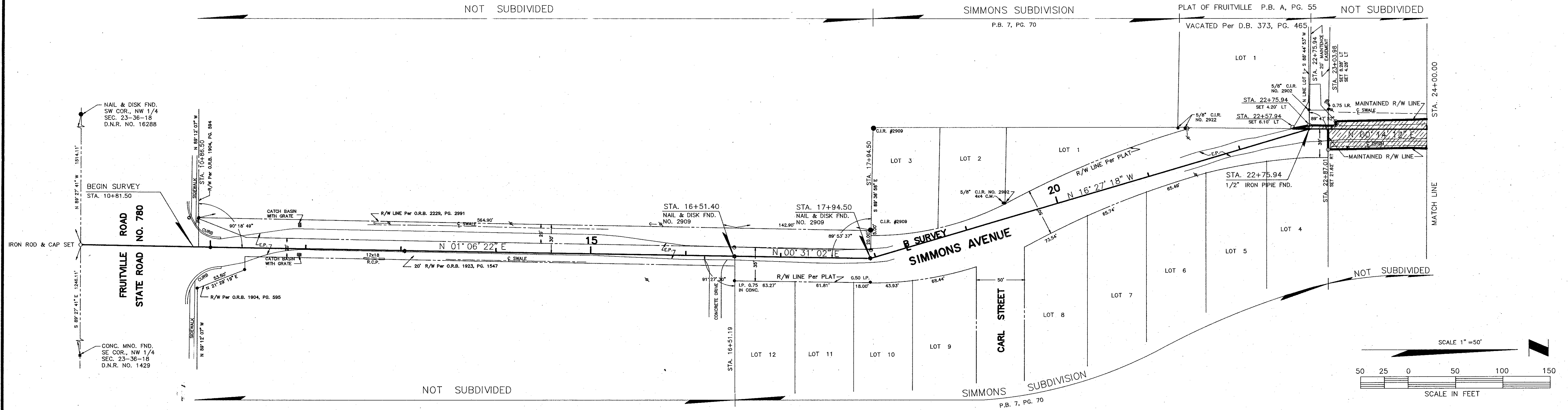
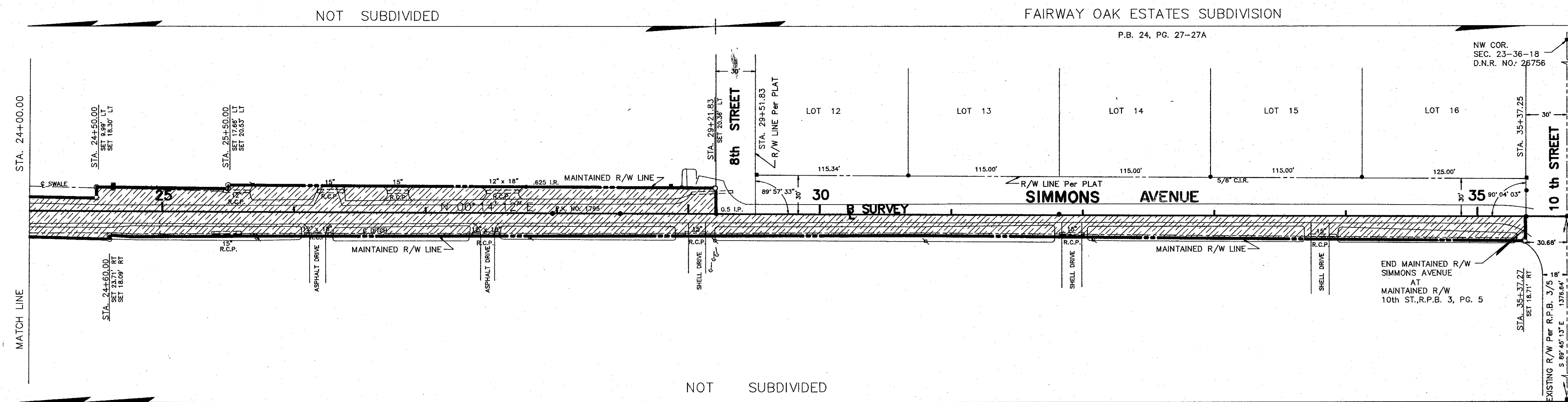


SECTION 23, TOWNSHIP 36 SOUTH, RANGE 18 EAST



SECTION 23, TOWNSHIP 36 SOUTH, RANGE 18 EAST



EQUATION
 STA. 35+67.94 END SURVEY
 SIMMONS AVENUE =
 STA. 9+80.17 BEGIN SURVEY
 10th STREET M/R/W
 R.P.B. 3, PG. 5
 CONC. MON. FND.
 S.W.N. NO. 4112

SEC. 14,
 TWP. 36 S., RNG. 18 E.

THIS IS TO CERTIFY THAT THE NUMBERED SHEETS ONE (1) OF ONE (1) CONSTITUTES THE OFFICIAL MAINTENANCE MAP SHOWING THE LOCATION AND SURVEY BY THE SARASOTA COUNTY, FLORIDA, TRANSPORTATION DEPARTMENT FOR SIMMONS AVENUE, LYING BETWEEN 300' SOUTH OF CARL STREET AND 10th STREET, ALL BEING IN SECTION 23, TOWNSHIP 36 SOUTH, RANGE 18 EAST, SARASOTA COUNTY, FLORIDA. THE PROPERTY SHOWN CROSS-HATCHED ON THIS MAP HAS BEEN VESTED IN SARASOTA COUNTY, FLORIDA PURSUANT TO THE PROVISIONS OF CHAPTER 95.361, FLORIDA STATUTES OF 1991.

ACCEPTED FOR FILES AND RECORDED IN THE PUBLIC RECORDS OF SARASOTA COUNTY, FLORIDA THIS 3 PAGE 49 DAY OF June A.D. 1992, ROAD PLAT BOOK

CLERK OF THE CIRCUIT COURT
 SARASOTA COUNTY, FLORIDA

THIS IS TO CERTIFY THAT THIS MAINTAINED MAP WAS APPROVED BY RESOLUTION NO. 892-178 PASSED AND ADOPTED BY THE BOARD OF COUNTY COMMISSIONERS OF SARASOTA COUNTY, FLORIDA, ON THE 14 DAY OF June A.D. 1992.

CHAIRMAN

ATTEST:
 KAREN E. RUSHING CLERK OF THE CIRCUIT COURT AND EX-OFFICIO CLERK OF THE BOARD OF COUNTY COMMISSIONERS OF SARASOTA COUNTY, FLORIDA BY:

DEPUTY CLERK

THIS IS TO CERTIFY THAT THE LIMITS OF THE ROADWAY OUTSIDE OF PLATTED RIGHT-OF-WAY AS SHOWN CROSS-HATCHED HEREON, HAS BEEN MAINTAINED CONTINUOUSLY FOR OVER FOUR (4) YEARS WITHOUT INTERRUPTION

DATE 6-15-92

PAUL KOPITZKE
 AREA SUPERINTENDENT
 HIGHWAY MAINTENANCE DIVISION

SURVEYOR'S CERTIFICATE

I HEREBY CERTIFY THAT THIS R/W MAP (SHEET 1 OF 1) REPRESENTS A BOUNDARY SURVEY OF THE ROAD AS SHOWN, THAT THE SURVEY WAS RECENTLY PERFORMED UNDER MY DIRECTION, AND THAT IT IS TRUE AND CORRECT TO THE BEST OF MY KNOWLEDGE AND BELIEF, AND THAT IT MEETS THE MINIMUM TECHNICAL STANDARDS FOR LAND SURVEYING IN THE STATE OF FLORIDA (CH. 21 HH-8, F.A.C.)

DATE OF SURVEY 4-4-90

E.R. EMERSON, COUNTY SURVEYOR
 PROFESSIONAL LAND SURVEYOR NO. 1867
 STATE OF FLORIDA
 1301 CATTLEMAN ROAD
 SARASOTA, FLORIDA 34232-9631

SURVEYOR'S NOTES

- BEARINGS SHOWN ARE BASED ON THE STATE OF FLORIDA RIGHT-OF-WAY MAP FOR STATE ROAD NO. 780 (FRUITVILLE ROAD), SECTION 17040-2518.
- A CHANGE OR JOG ON THE MAINTAINED RIGHT-OF-WAY LINE IS NOT NECESSARILY LOCATED AT AN INTERSECTING PROPERTY LINE.
- ALL UNDERGROUND FACILITIES NOT LOCATED.

LEGEND

- = NAIL & DISK SET
- = NAIL & DISK FND.
- = REF NAIL & DISC
- = I.R. SET WITH RED CAP STAMPED COUNTY R/W PLS 1867
- = I.R. FND.
- ⊕ = RAILROAD SPIKE FND.
- △ = HUB SET
- ▲ = HUB FND.
- = CONCRETE MONUMENT SET
- = CONCRETE MONUMENT FND.
- ⊠ = WATER VALVE
- ⊞ = UTILITY POLE
- ⊞ = G.T. & T.V. CABLE BOX
- = MANHOLE
- ⊙ = LIGHT POLE
- ⊙ = FIRE HYDRANT
- ⊙ = GUY WIRE
- T.B. = TOP OF BANK
- EP = EDGE OF PAVEMENT
- = OAK TREE
- = PINE TREE
- = PALM TREE

SARASOTA COUNTY TRANSPORTATION DEPARTMENT
 ENGINEERING DIVISION - SURVEY - MAPPING SECTION

MAINTAIN RIGHT OF WAY MAP

SIMMONS AVENUE
 300'± SOUTH OF CARL ST. TO 10th ST.

BY	DATE
K. PETERS	5-1-91
DATE	6-10-92
CHECKED	6-27-91
DATE	6-29-92
COMPARED	6-27-91
DATE	6-29-92
REF.	F.B. 325, PG. 29-30
PROJECT NO.	90024
SHEET	1 of 1