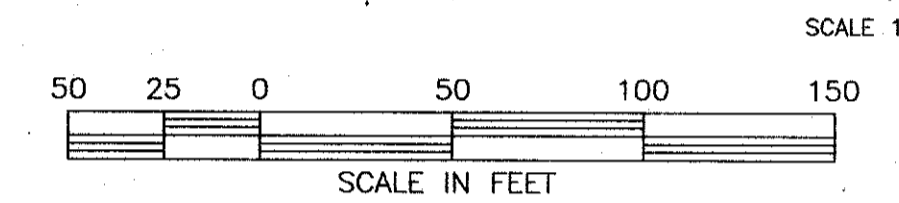
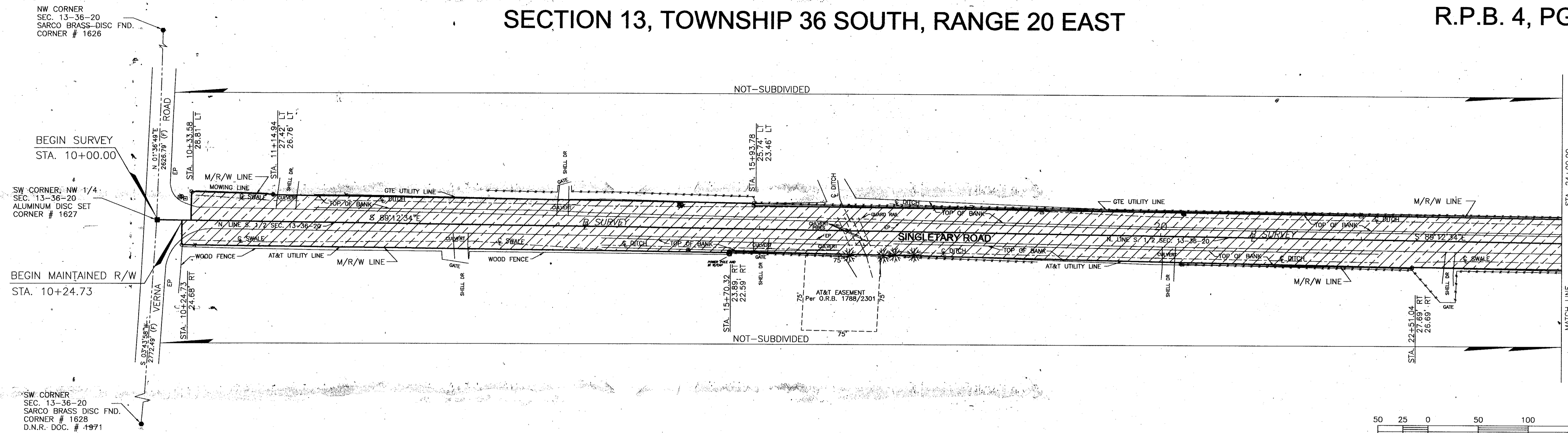


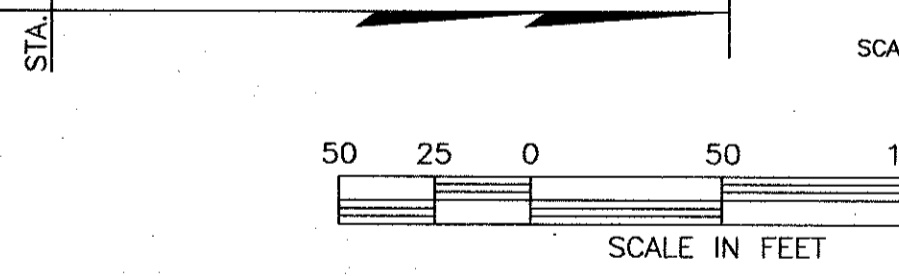
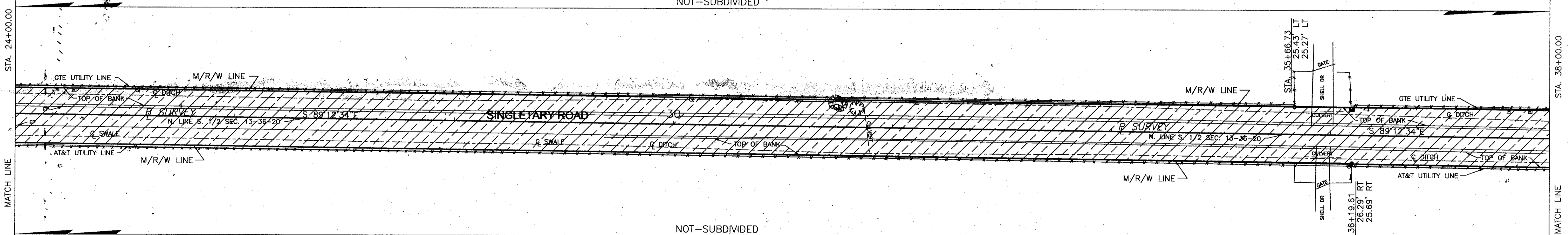
SECTION 13, TOWNSHIP 36 SOUTH, RANGE 20 EAST

B.C.C. RESO. 99-305 O.R.I. NO. 1999169053



SECTION 13, TOWNSHIP 36 SOUTH, RANGE 20 EAST

- LEGEND
- O = NAIL & DISK SET
- O with dot = NAIL & DISK FND.
- O with cross = REF NAIL & DISC
- O with triangle = I.R. SET WITH RED CAP STAMPED
- O with square = COUNTY R/W PLS 1867
- O with circle = I.R. FND.
- O with diamond = RAILROAD SPIKE FND.
- O with star = HUB SET
- O with plus = HOB FND.
- O with asterisk = CONCRETE MONUMENT SET
- O with hash = CONCRETE MONUMENT FND.
- O with x = WATER VALVE
- O with dot-dot = UTILITY POLE
- O with dash = G.T. & T.V. CABLE BOX-
- O with vertical line = MANHOLE
- O with horizontal line = LIGHT POLE
- O with diagonal line = FIRE HYDRANT
- O with cross-hatch = GUY WIRE
- O with triangle-up = TOP OF BANK
- O with triangle-down = EDGE OF PAVEMENT
- O with square-up = OAK TREE
- O with square-down = RED MAPLE
- O with circle-up = CABBAGE PALM
- O with circle-down = TYPE UNKNOWN
- O with diamond-up = GUY POLE
- O with diamond-down = 4" P.V.C. UTIL. MARKER
- O with square-left = GTE SERVICE
- O with square-right = FPL MANHOLE
- O with circle-left = BARBED WIRE
- O with circle-right = HOG WIRE
- O with horizontal line = MAINTAINED RIGHT-OF-WAY



- LEGEND OF ABBREVIATIONS
B = BASELINE
B.M. = BENCH MARK
B.T.O.B. = BACK TOP OF BANK
C.B. = CONDOMINIUM BOOK
C.C.C.L. = COASTAL CONSTRUCTION CONTROL LINE
CH. = CHAPTER
CH.P. = CHAPTER
CH. BRC. = CHORD BEARING
C.M. = CONCRETE MONUMENT
C.M.P. = CORRUGATED METAL PIPE
CO. = COUNTY
CONDO. = CONDOMINIUM
CONST. = CONSTRUCTION
COR. = CORNER
D.B. = DEED BOOK
D.D. = DATA DRAWER
D.N.R. = DEPARTMENT OF NATURAL RESOURCES
D.O.T. = DEPARTMENT OF TRANSPORTATION
DRAIN. = DRAINAGE
EASE. = EASEMENT
F.A.C. = FLORIDA ADMINISTRATIVE CODE
F.B. = FIELD BOOK
F.D.O.T. = FLORIDA DEPARTMENT OF TRANSPORTATION
FND. = FOUND
F.N. = FILE NUMBER
F.P. & L. = FLORIDA POWER AND LIGHT
G.T.E. = GENERAL TELEPHONE ELECTRIC
I.P. = IRON PIPE
I.R. = IRON ROD
L. = LENGTH
L.B. = LICENSE BUSINESS
M.H.W.L. = MEAN HIGH WATER-LINE
MON. = MONUMENT
M/R/W = MAINTAINED RIGHT-OF-WAY
N. & D. = NAIL AND DISC
N.G.V.D. = NATIONAL GEODETIC
O.S. = NATIONAL OCEAN SERVICE
O.A. = OVER ALL
O/E = OVERHEAD ELECTRIC
O.R.B. = OFFICIAL RECORDS BOOK
O.T. = ORDER OF TAKING
P.B. = PLAT BOOK
P.C. = POINT OF CURVATURE
P.C.C.P. = PERMANENT CONTROL POINT
P.I. = POINT OF INTERSECTION
P.L.S. = PROFESSIONAL LAND SURVEYOR
P.R.C. = POINT OF REVERSE CURVE
P.R.M. = PERMANENT REFERENCE MONUMENT
P.T. = POINT OF TANGENCY
R. = RADII
R.C.P. = REINFORCED CONCRETE PIPE REFERENCE
RESUB. = RESUBDIVISION
RNG. = RANGE
R.P.B. = ROAD PLAT BOOK
R.R. = RAILROAD
R/W = RIGHT-OF-WAY
SEC. = SECTION
S.F.D.D. = SARASOTA-FRUITVILLE DRAINAGE DISTRICT
S.R. = STATE ROAD
STA. = STATION
SUB. = SUBDIVISION
T. = TANGENT
T.I.F. = TRUSTEES OF THE INTERNAL IMPROVEMENT FUND
TWP. = TOWNSHIP
U/E = UNDERGROUND ELECTRIC
VEG. = VEGETATION

THIS IS TO CERTIFY THAT THE NUMBERED SHEETS ONE (1) OF TWO (2) CONSTITUTES THE OFFICIAL MAINTENANCE MAP SHOWING THE LOCATION AND SURVEY BY THE SARASOTA COUNTY, FLORIDA, TRANSPORTATION DEPARTMENT FOR SINGLETARY ROAD LYING BETWEEN VERA ROAD AND THE COUNTY LINE, ALL BEING IN SECTION 13, TOWNSHIP 36 SOUTH, RANGE 20 EAST, SARASOTA COUNTY, FLORIDA, PURSUANT TO THE PROVISIONS OF CHAPTER 95.361, FLORIDA STATUTES OF 1991.

FILED FOR RECORD IN ROAD PLAT BOOK 4 AT PAGES 31-31A OF THE PUBLIC RECORDS OF SARASOTA COUNTY, FLORIDA, THIS 29th DAY OF December, A.D., 1999.

KAREN E. RUSHING CLERK OF THE CIRCUIT COURT SARASOTA COUNTY, FLORIDA
By: Elaine M. Hamel Deputy Clerk

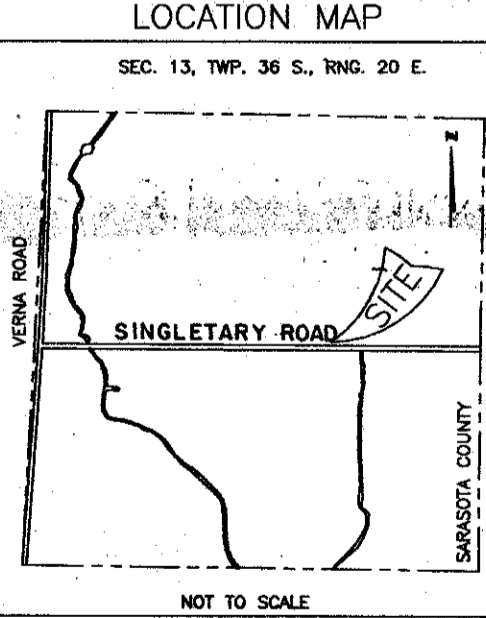
THIS IS TO CERTIFY THAT THIS MAINTAINED MAP WAS APPROVED BY RESOLUTION NO. 99-305 PASSED AND ADOPTED BY THE BOARD OF COUNTY COMMISSIONERS OF SARASOTA COUNTY, FLORIDA, ON THE 17th DAY OF December, A.D. 1999.

Shannon Shank CHAIRMAN

ATTEST: KAREN E. RUSHING CLERK OF THE CIRCUIT COURT AND EX-OFFICIO CLERK OF THE BOARD OF COUNTY COMMISSIONERS OF SARASOTA COUNTY, FLORIDA BY: Kara Hines DEPUTY CLERK

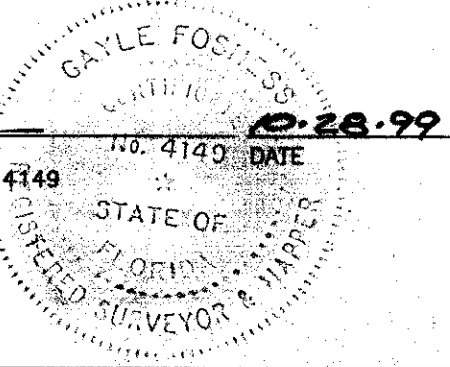
THIS IS TO CERTIFY THAT THE LIMITS OF THE ROADWAY OUTSIDE OF PLATED RIGHT-OF-WAY AS SHOWN CROSS-HATCHED HEREON, HAS BEEN MAINTAINED CONTINUOUSLY FOR OVER FOUR (4) YEARS WITHOUT INTERRUPTION.

Allen Blackwood OPERATIONS MANAGER



SURVEYOR'S CERTIFICATE
I HEREBY CERTIFY THAT THIS MAINTAINED RIGHT-OF-WAY MAP (SHEETS 1-2) REPRESENTS A SURVEY OF THE MAINTAINED ROAD LIMITS AS SHOWN HEREON, THAT THE SURVEY WAS RECENTLY PERFORMED UNDER MY DIRECTION, THAT IT IS TRUE AND CORRECT TO THE BEST OF MY KNOWLEDGE AND BELIEF AND THAT THE SURVEY MEETS THE MINIMUM TECHNICAL STANDARDS AS SET FORTH BY THE FLORIDA BOARD OF PROFESSIONAL LAND SURVEYORS IN CHAPTER 61G17, F.A.C. PURSUANT TO SECTION 472.027, F.S.

DATE OF SURVEY: 9-28-91
DATE MONUMENTS SET: 1-21-92



SURVEYOR'S NOTES

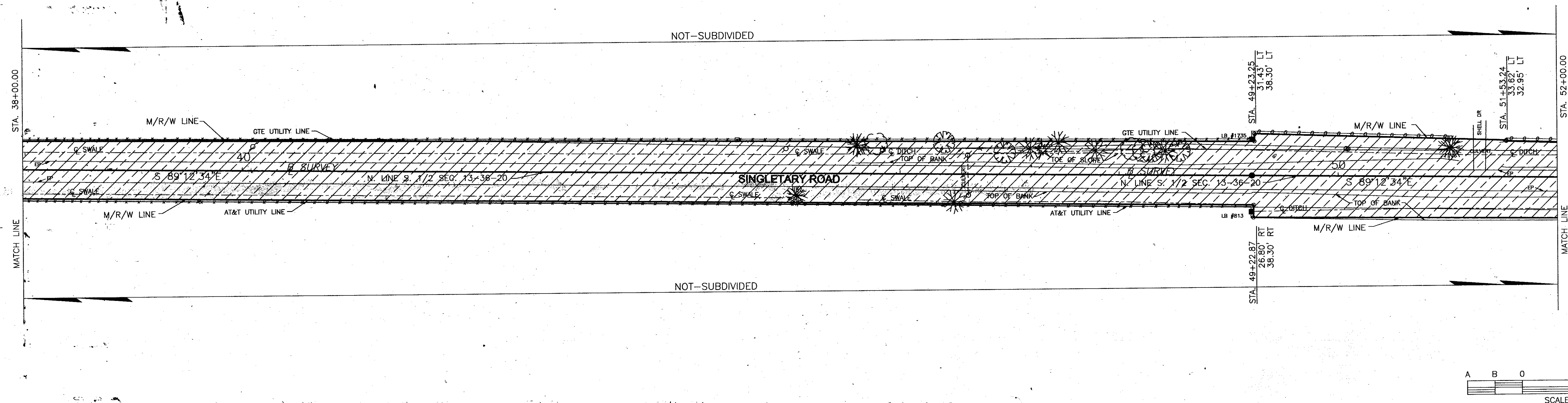
- 1. BEARINGS SHOWN ARE BASED ON THE VERA ROAD MAINTAINED RIGHT-OF-WAY MAP F.D.O.T. SECTION 17508-2801 AS RECORDED IN ROAD PLAT BOOK 2, PAGES 18-18E, PUBLIC RECORDS OF SARASOTA COUNTY, FLORIDA, TRANSPORTATION DEPARTMENT FOR THE SE 1/4 SECTION 11-36-20 BEING N 02°44'55" E.
2. A CHANGE OR JOG ON THE MAINTAINED RIGHT-OF-WAY LINE IS NOT NECESSARILY LOCATED AT AN INTERSECTING PROPERTY LINE.
3. CHAPTER 20294 (NO. 86), HOUSE BILL NO. 1617: AN ACT to Declare, Designate and Establish Certain Roads and Bridges in Sarasota County, Florida, as State Roads and Bridges. Be it Enacted by the Legislature of the State of Florida:
Section 1. That the following named and described road in Sarasota County, Florida, be and they are hereby declared, designated and established as a State Road of the system of State Roads of this State with all the rights and privileges of designated State Road, to-wit:
(53) Commence at South quarter-quarter corner on the West line of Section 13, Township 36 South, Range 20 East; thence run East along forty-acre line to East line of said Section a distance of one mile, more or less, and known as the Berry Road.
Section 2. The State Road Department of Florida may, as soon as practicable, cause the route of these roads and bridges to be surveyed and accurately located as part of the State Road System of Florida, and said roads shall follow the lines and location of now present roads as already established as nearly as practicable.
Section 3. The State Road Department of Florida shall cause number designations to be given to the above established roads and said roads shall thereafter be known thereby until changed by the State Road Department or by law.
Section 4. This Act shall become effective immediately upon its becoming a law.
Vetoed by the Governor 1939.
Passed over Veto 1941.
Filed in Office Secretary of State May 12, 1941.
4. IMPROVEMENTS SUCH AS, BUT NOT LIMITED TO, UNDERGROUND UTILITIES, LANDSCAPE FEATURES, ETC. HAVE NOT BEEN LOCATED EXCEPT AS SHOWN.
5. THIS MAP WAS PREPARED WITHOUT THE BENEFIT OF AN ABSTRACT OF TITLE OR AN ATTORNEY'S OPINION OF TITLE. THEREFOR, ANY DEED OVERLAP OR HATUS OR ANY RECORDED OR UNRECORDED RIGHTS-OF-WAY AND OR EASEMENTS MAY NOT BE SHOWN.
6. MAINTAINED RIGHT-OF-WAY MARKERS SET BY E.R. EMERSON, COUNTY SURVEYOR IN 1992, PROFESSIONAL LAND SURVEYOR NO. 1867.

FILED FOR RECORD
1999 DEC 29 AM 7:51

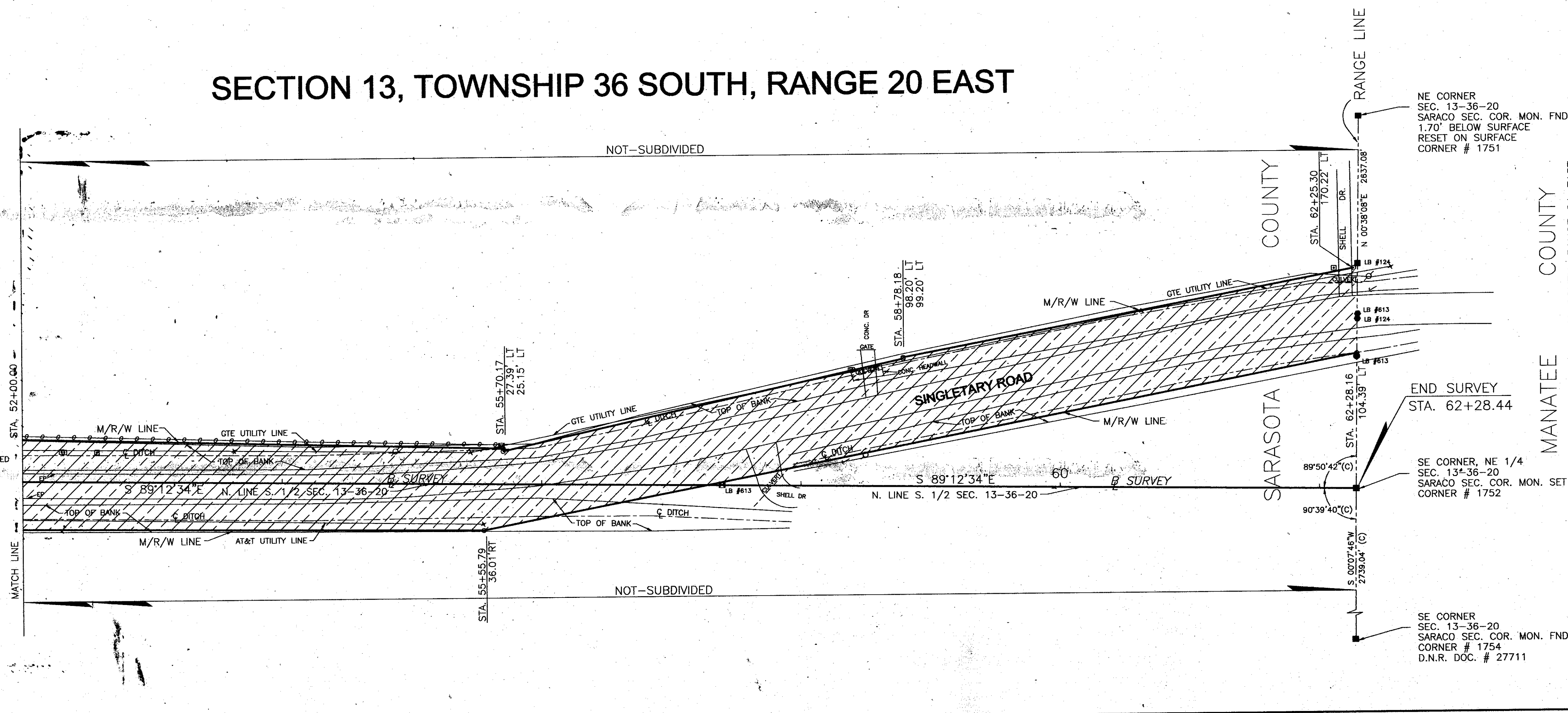
KAREN E. RUSHING CLERK OF CIRCUIT COURT SARASOTA COUNTY, FL

Table with columns: DRAWN, CHECKED, COMPARED, REF., SCALE, PROJECT NO., SHEET. Includes project details for SINGLETARY ROAD VERA ROAD TO COUNTY LINE, Project No. 91095, Sheet 1 of 2.

SECTION 13, TOWNSHIP 36 SOUTH, RANGE 20 EAST



SECTION 13, TOWNSHIP 36 SOUTH, RANGE 20 EAST



- LEGEND**
- = NAIL & DISK SET
  - = NAIL & DISK FND.
  - = REF. NAIL & DISC
  - = I.R. SET WITH RED CAP STAMPED COUNTY R/W-PLS 1887
  - = I.R. FND.
  - = RAILROAD SPIKE FND.
  - = HUB SET
  - = HUB FND.
  - = CONCRETE MONUMENT SET
  - = CONCRETE MONUMENT FND.
  - = WATER VALVE
  - = UTILITY POLE
  - = G.T. & T.V. CABLE BOX
  - = MANHOLE
  - = LIGHT POLE
  - = FIRE HYDRANT
  - = GUY WIRE
  - = TOP OF BANK
  - = EDGE OF PAVEMENT
  - = OAK TREE
  - = RED MAPLE
  - = CABBAGE PALM
  - = TYPE UNKNOWN
  - = GUY POLE
  - = 4" P.V.C. UTIL. MARKER
  - = GTE SERVICE
  - = FPL MANHOLE
  - = BARBED WIRE
  - = HOG WIRE

FILED FOR RECORD  
1999 DEC 29 AM 7:51  
CLERK OF CIRCUIT COURT  
SARASOTA COUNTY, FL

SCALE 1"=50'  
50 25 0 50 100 150  
SCALE IN FEET

SARASOTA COUNTY PUBLIC WORKS BUSINESS CENTER  
CONSTRUCTION SERVICES, SURVEY-MAPPING

**MAINTAINED  
RIGHT-OF-WAY MAP  
SINGLETARY ROAD  
VERNA ROAD TO COUNTY LINE**

DATE	BY	DATE
1-27-92	K. PETERS	10-28-99
10-25-99	T. OWEN	11-1-99
1-21-92	J. JENNINGS	11/3/99

REF: F.B. 339/20-21  
DATA DR. 1, FILE #12\*

SCALE 1"=50' PROJECT NO. 91095 SHEET 2 OF 2