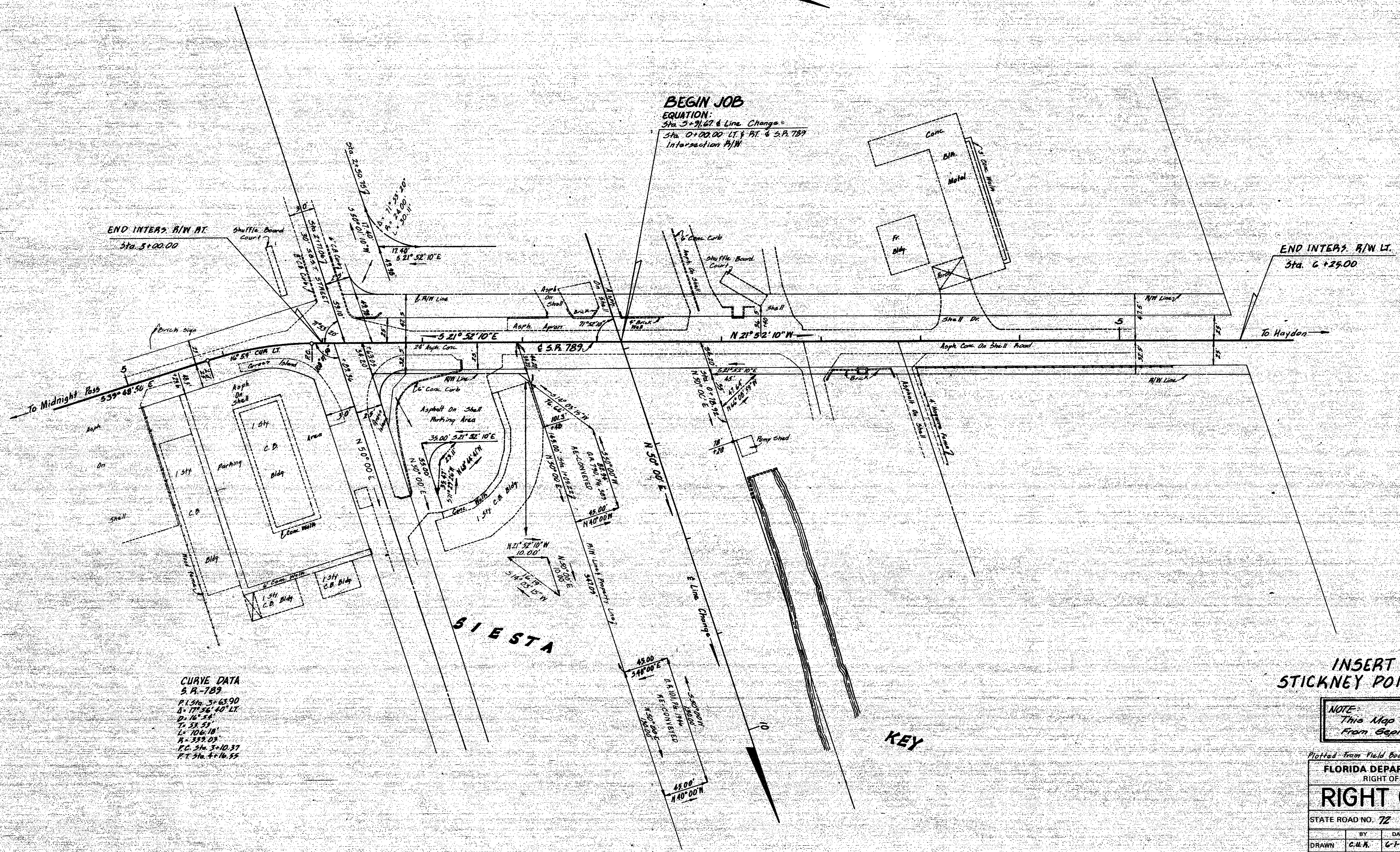


Sec. 19
T375 ~ R18E

Scale: 1" = 50'



CURVE DATA
S.R. 789
P.I. Sta. 3+63.90
D = 77°56'40" LT
R = 16'58"
T = 33'53"
L = 100'00"
A = 339.03°
P.C. Sta. 3+10.37
P.T. Sta. 4+16.55

INSERT
STICKNEY POINT BRIDGE

NOTE:
This Map Re-Traced January 1981
From Geos of Original Map.

Plotted from Field Book 743854

FLORIDA DEPARTMENT OF TRANSPORTATION RIGHT OF WAY ENGINEERING SECTION			
RIGHT OF WAY MAP			
STATE ROAD NO. 72		SARASOTA COUNTY	
BY	DATE	APPROVED BY	DATE
DRAWN C.M.R.	6-1-66	C.W. Monte De Oca	
TRACED R.L.H.	6-3-66	DISTRICT ENGINEER	
CHECKED B.C.	6-13-66	W.A. De Oca	1-14-81
MAPS PREPARED BY		FIELD BOOK NOS.	
W.P.I. NO.		SCALE 1" = 50'	
SECTION 17110-2503		SHEET 2	

RR
RPB2/19
1/16/81