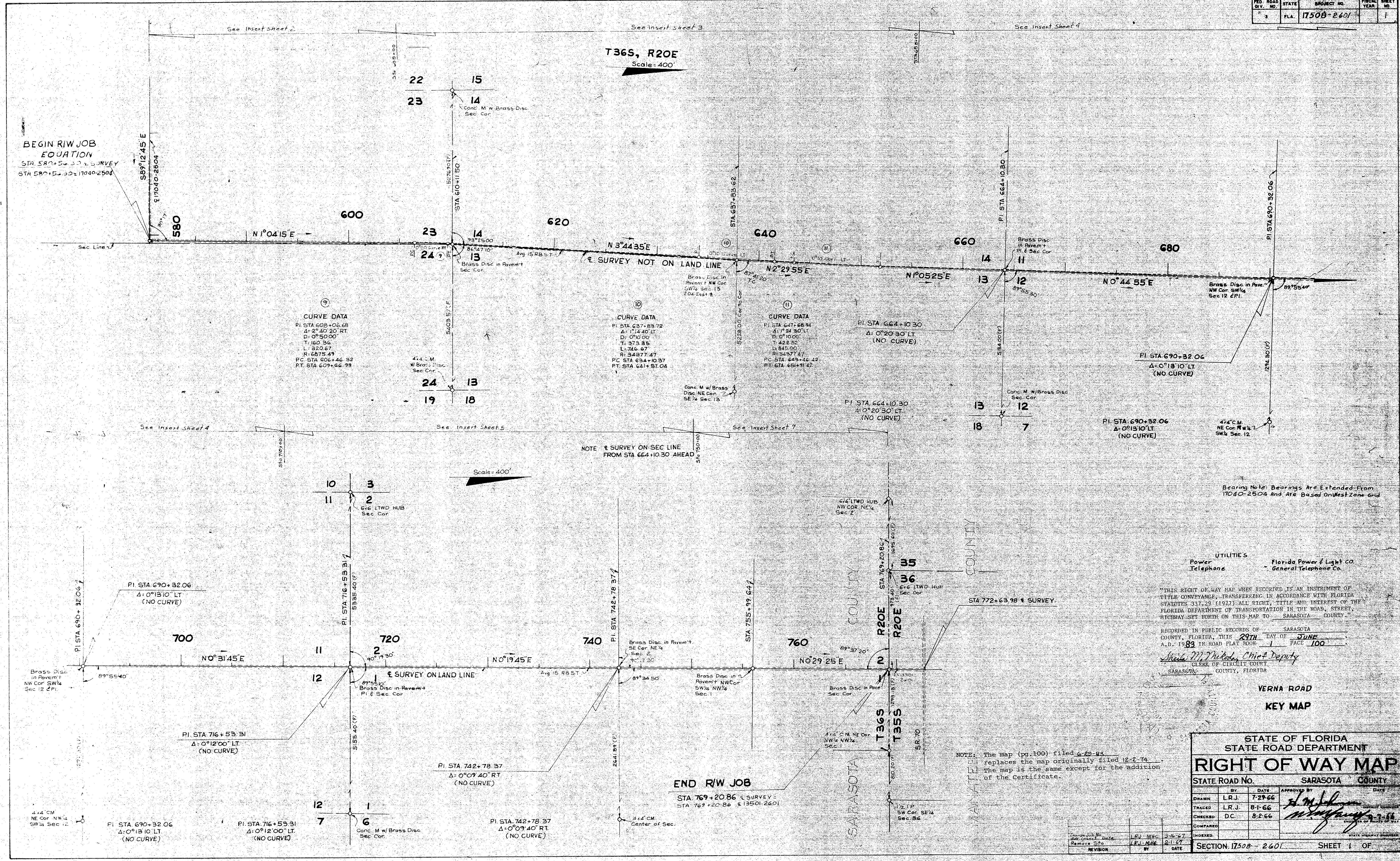


FED. ROAD DIV. NO.	STATE	PROJECT NO.	FISCAL YEAR	SHEET NO.
3	FLA.	17508-2601		1



NOTE: SURVEY ON SEC LINE FROM STA 664+10.30 AHEAD

Bearing Note: Bearings Are Extended From 17040-2504 And Are Based On West Zone Grid

UTILITIES
 Power - Florida Power & Light Co.
 Telephone - General Telephone Co.

"THIS RIGHT OF WAY MAP WHEN RECORDED IS AN INSTRUMENT OF TITLE CONVEYANCE, TRANSFERRING IN ACCORDANCE WITH FLORIDA STATUTES 337.29 (1977) ALL RIGHT, TITLE AND INTEREST OF THE FLORIDA DEPARTMENT OF TRANSPORTATION IN THE ROAD, STREET, HIGHWAY SET FORTH ON THIS MAP TO SARASOTA COUNTY."

RECORDED IN PUBLIC RECORDS OF SARASOTA COUNTY, FLORIDA, THIS 29TH DAY OF JUNE A.D. 1983 IN ROAD PLAT BOOK 1 PAGE 100
Shirley M. Mules, Chief Deputy
 CLERK OF CIRCUIT COURT
 SARASOTA COUNTY, FLORIDA

VERNA ROAD
 KEY MAP

STATE OF FLORIDA		STATE ROAD DEPARTMENT	
RIGHT OF WAY MAP			
STATE ROAD NO.		SARASOTA COUNTY	
DRAWN BY	L.R.J.	DATE	7-29-66
TRACED BY	L.R.J.	DATE	8-1-66
CHECKED BY	D.C.	DATE	8-2-66
COMPADED BY		DATE	
INDEXED BY		DATE	
SECTION	17508-2601	SHEET	1 OF 1

NOTE: The map (pg.100) filed 6-25-65 replaces the map originally filed 12-2-74. The map is the same except for the addition of the Certificate.

APPROVED BY	DATE
REMOVE STA	DATE
REVISION	DATE