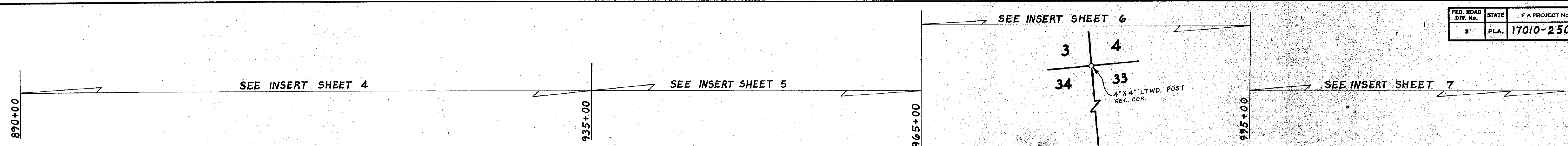


FED. ROAD DIV. NO.	STATE	F.A. PROJECT NO.	FISCAL YEAR	SHEET NO.
3	FLA.	17010-2508		1



§ 17060-2502  
 P.I. STA. 6+96.07  
 $\Delta = 31^\circ 15' 00''$  RT.  
 $D = 3^\circ 00'$   
 $T = 534.14'$   
 $L = 1041.67'$   
 $R = 1909.86'$   
 P.C. STA. 1+61.93  
 P.T. STA. 12+03.60

EQUATION:  
 STA. 969+20.21 § SURVEY  
 STA. 16+77.35 (C)  
 § 17060-2502

P.I. STA. 573+00 § 1701-PROJ. 66  
 $\Delta = 0^\circ 02'$  LT.  
 (No Curve)

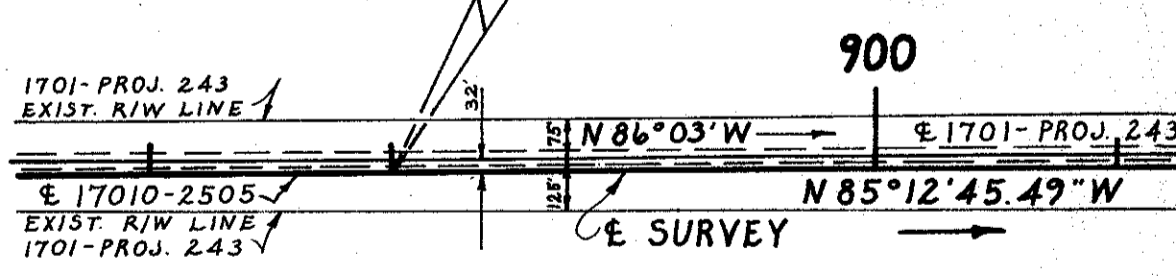
EQUATION:  
 STA. 17+12.82 § 17060-2502  
 STA. 553+04.63 1701-PROJ. 66 "BK"  
 1701-PROJ. 83 "AHD"

P.I. STA. 584+00 § 1701-PROJ. 66  
 $\Delta = 0^\circ 04'$  RT.  
 (No Curve)

EQUATION:  
 STA. 925+71.5 END 1701-PROJ. 243 TO EAST  
 STA. 596+68.78 END 1701-PROJ. 66 TO WEST

**Note**  
 --- R/W Mkr.  
 These symbols denote the location of underground Permanent R/W Markers (P.R.W.M.). The P.R.W.M. are 1/2" copper coated rods. Above ground reference markers are located within 1' of the P.R.W.M., where possible.  
 The locations of the P.R.W.M. were established by field survey in August 1982. The original field notes are filed in the District I Office, State of Florida Department of Transportation, Bartow, Florida. Copies of these notes are filed in the office of R/W Engineering, State of Florida Department of Transportation, Tallahassee, Florida.  
 Filed for record in the Office of the Clerk of the Circuit Court for the County of Sarasota, State of Florida, in Map Book 1, Page 114-116 on the 25th day of AUGUST, A.D. 1982.  
 R.H. Naughton  
 Clerk of the Circuit Court Sarasota, Florida.

**BEGIN R/W JOB**  
 STA. 890+00.00  
**END R/W JOB 17010-2505**



①  
 § SURVEY  
 P.I. STA. 920+36.22  
 $\Delta = 37^\circ 42' 04''$  LT.  
 $D = 2^\circ 00'$   
 $T = 978.08'$   
 $L = 1885.06'$   
 $R = 2864.79'$   
 P.C. STA. 910+58.14  
 P.T. STA. 929+43.20

§ 1701 PROJ. 243  
 P.I. STA. 921+12.0  
 $\Delta = 37^\circ 41'$   
 $D = 4^\circ 00'$   
 $T = 488.89'$   
 $L = 942.08'$   
 $R = 1432.69$  (R.R.)  
 P.C. STA. 916+23.11  
 P.T. STA. 925+65.19

②  
 § SURVEY  
 P.I. STA. 977+92.50  
 $\Delta = 68^\circ 31' 50''$  RT.  
 $D = 1^\circ 58' 28''$   
 $T = 1976.85'$   
 $L = 3470.71'$   
 $R = 2901.73'$   
 P.C. STA. 958+15.65  
 P.T. STA. 992+86.36

§ 1701-PROJ. 66  
 P.I. STA. 549+30.39  
 $\Delta = 68^\circ 31' 50''$  LT.  
 $D = 1^\circ 59' 48''$   
 $T = 1955.04'$   
 $L = 3432.37'$   
 $R = 2869.72$  (R.R.)  
 P.C. STA. 529+15.35  
 P.T. STA. 564+07.72

**UTILITY OWNERS**

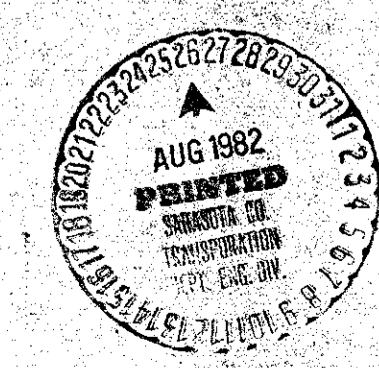
Power	-----	Florida Power & Light Co.
Telephone	-----	General Telephone Co.
Water	-----	General Development Co.
Gas	-----	General Development Co.
Sewer	-----	General Development Co.

Bearing Note: Bearings Are Florida Plane Co-ord System Furnished By Field

**KEY MAP 'A'**  
 S.R. 45, U.S. 41  
 M.P. 5.5 TO EXISTING 4-LANE

ALIGN, LAND TIES TAKEN FROM WATSON & CO. BASELINE CONTROL SHEET TOPOG. TAKEN FROM F.B. 280826

STATE OF FLORIDA DEPARTMENT OF TRANSPORTATION			
<b>RIGHT OF WAY MAP</b>			
STATE ROAD NO. 45, U.S. 41 SARASOTA COUNTY			
DRAWN	L. R. J.	DATE	4-25-72
TRACED	J. A. B.	DATE	5-22-72
CHECKED	R. H. C.	DATE	10-30-72
APPROVED BY	[Signature]		DATE
APPROVED BY	[Signature]		DATE
COMPARED			
INDEXED			
REVISION	BY	DATE	



FED. ROAD DIV. No.	STATE	F.A. PROJECT No.	FISCAL YEAR	SHEET No.
3	FLA.	17010-2508		2

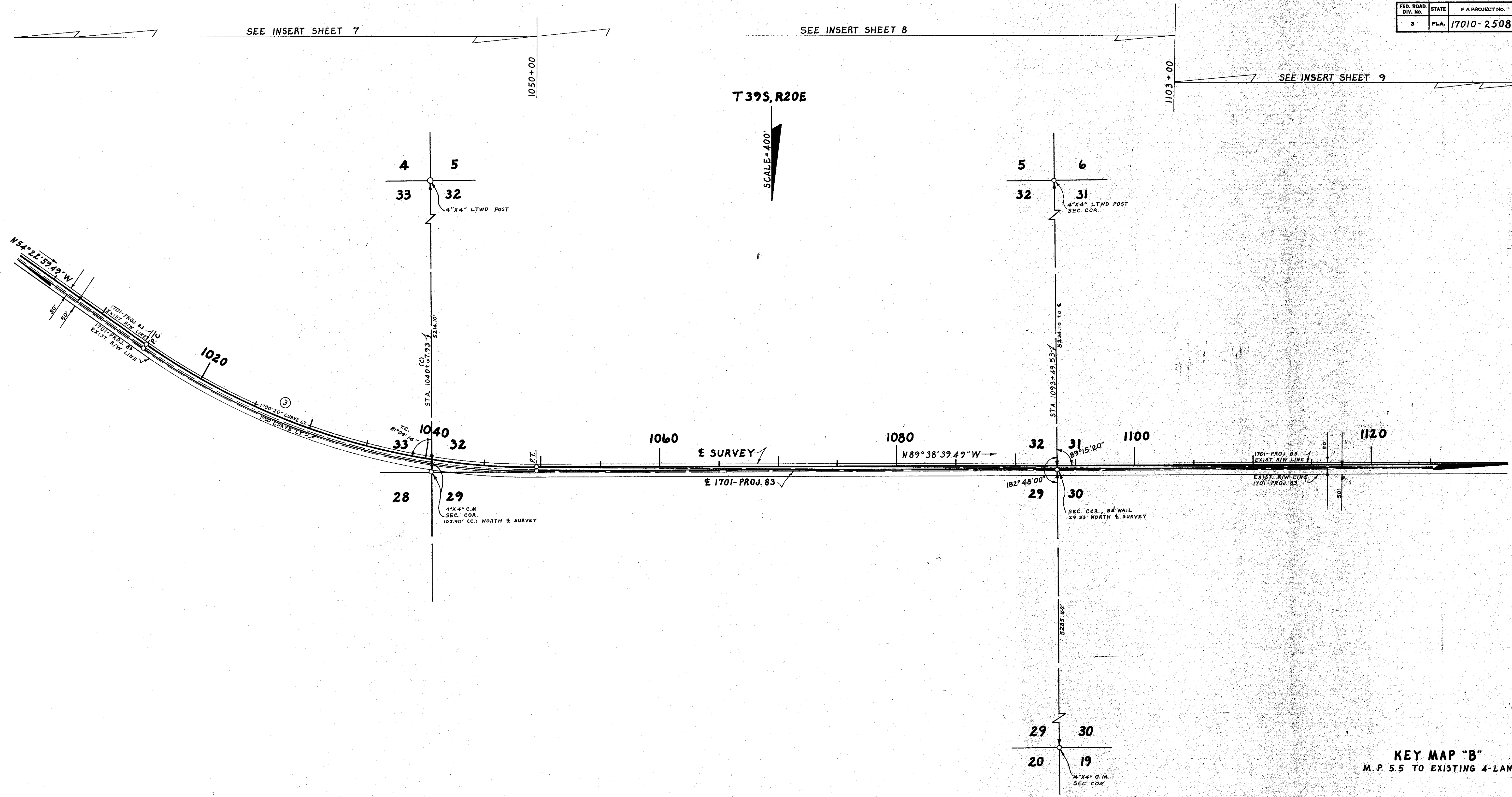
SEE INSERT SHEET 7

SEE INSERT SHEET 8

SEE INSERT SHEET 9

T 39S, R20E

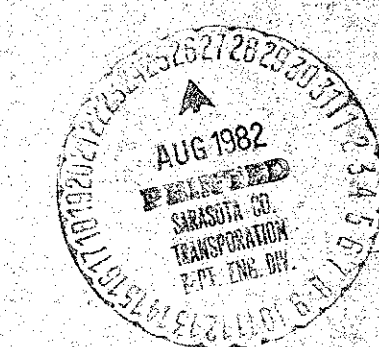
SCALE = 400'



③  
 CURVE DATA  
 P.I. STA. 1032+66.40  
 $\Delta = 35^\circ 15' 40''$  L.T.  
 $D = 1^\circ 00' 20''$   
 $T = 1810.72'$   
 $L = 3506.42'$   
 $R = 5697.58'$   
 P.C. STA. 1014+55.68  
 P.T. STA. 1049+62.10

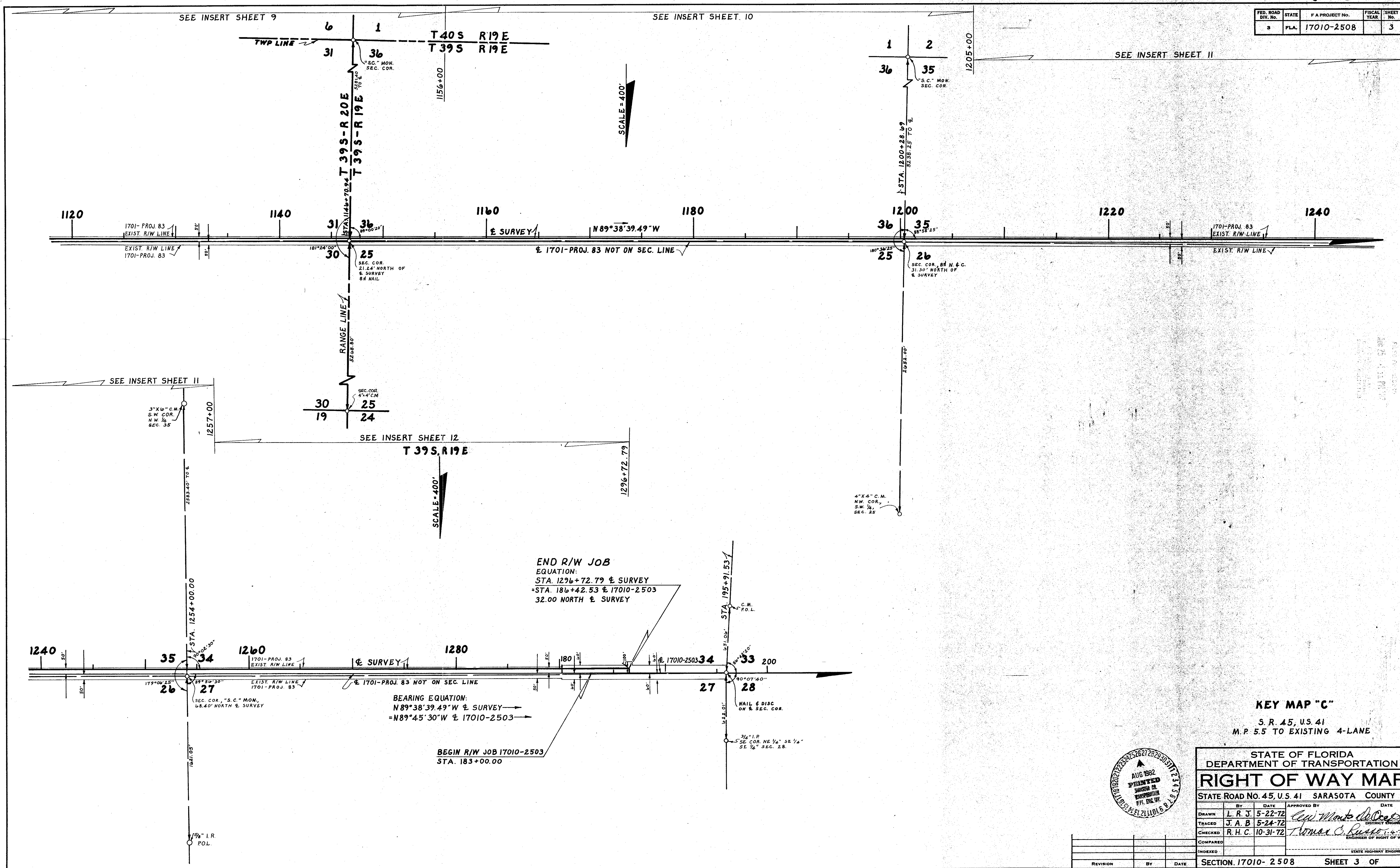
③  
 CURVE DATA  
 P.I. STA. 490+96.7  
 $\Delta = 35^\circ 15' 40''$  L.T.  
 $D = 1^\circ 00'$   
 $T = 1820.9'$   
 $L = 3527.6'$   
 $R = 5729.65$  (R.R.)  
 P.C. STA. 472+75.8  
 P.T. STA. 508+03.4

KEY MAP "B"  
 M.P. 5.5 TO EXISTING 4-LANE



STATE OF FLORIDA DEPARTMENT OF TRANSPORTATION			
<b>RIGHT OF WAY MAP</b>			
STATE ROAD No. 45		SARASOTA COUNTY	
BY	DATE	APPROVED BY	DATE
DRAWN L. R. J.	4-26-72	<i>Thomas C. Russo</i>	
TRACED J. A. B.	5-23-72		
CHECKED R. H. C.	10-31-72		
COMPARED			
INDEXED			
REVISION	BY	DATE	
SECTION. 17010-2508			SHEET 2 OF

FED. ROAD DIV. No.	STATE	F.A. PROJECT No.	FISCAL YEAR	SHEET No.
3	FLA.	17010-2508		3



END R/W JOB  
EQUATION:  
STA. 1296+72.79 & SURVEY  
= STA. 186+42.53 & 17010-2503  
32.00 NORTH & SURVEY

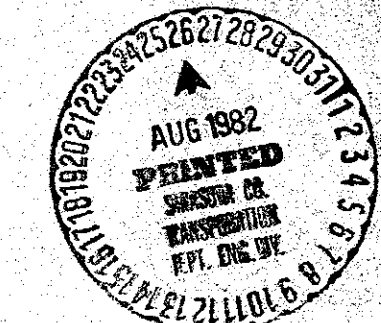
BEARING EQUATION:  
N 89° 38' 39.49\" W & SURVEY  
= N 89° 45' 30\" W & 17010-2503

BEGIN R/W JOB 17010-2503  
STA. 183+00.00

KEY MAP "C"

S. R. 45, U.S. 41  
M.P. 5.5 TO EXISTING 4-LANE

STATE OF FLORIDA DEPARTMENT OF TRANSPORTATION			
<b>RIGHT OF WAY MAP</b>			
STATE ROAD NO. 45, U.S. 41		SARASOTA COUNTY	
BY	DATE	APPROVED BY	DATE
DRAWN L. R. J.	5-22-72	<i>Tommaso C. Russo</i>	
TRACED J. A. B.	5-24-72	DISTRICT ENGINEER	
CHECKED R. H. C.	10-31-72	ENGINEER OF RIGHT OF WAY	
COMPARED			
INDEXED			
SECTION. 17010- 2508		SHEET 3 OF	



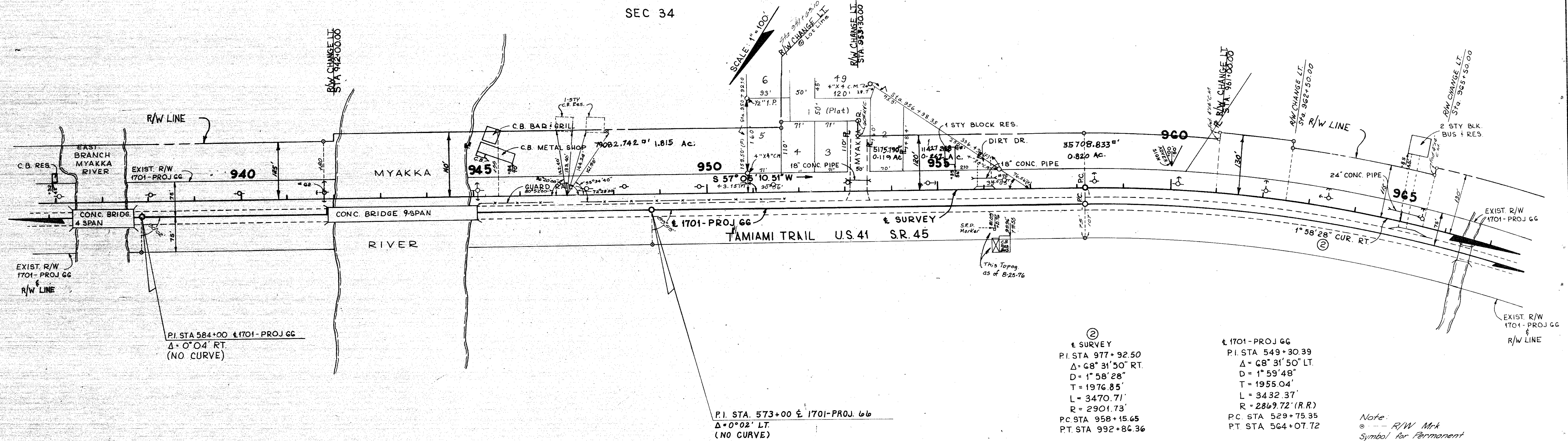
REVISION	BY	DATE



FED. ROAD DIV. No.	STATE	F. A. PROJECT No.	FISCAL YEAR	SHEET No.
3	FLA.	17010-2508		5

PLAMORE SUBDIVISION.  
Filed March 2, 1955, P.B. 8, Pg. 30-A  
(No Block No on Plat)

T 39 S ~ R 20 E  
SEC 34



②  
 & SURVEY  
 P.I. STA 977+92.50  
 Δ = 68° 31' 50" RT.  
 D = 1° 58' 28"  
 T = 1976.85'  
 L = 3470.71'  
 R = 2901.73'  
 P.C. STA 958+15.65  
 P.T. STA 992+86.36

& 1701-PROJ GG  
 P.I. STA 549+30.39  
 Δ = 68° 31' 50" LT.  
 D = 1° 59' 48"  
 T = 1955.04'  
 L = 3432.37'  
 R = 2869.72' (R.R.)  
 P.C. STA 529+75.35  
 P.T. STA 564+07.72

Note:  
 Ⓞ --- R/W Mrk  
 Symbol for Permanent  
 R/W Markers See  
 sheet No. 1 for details.

INSERT

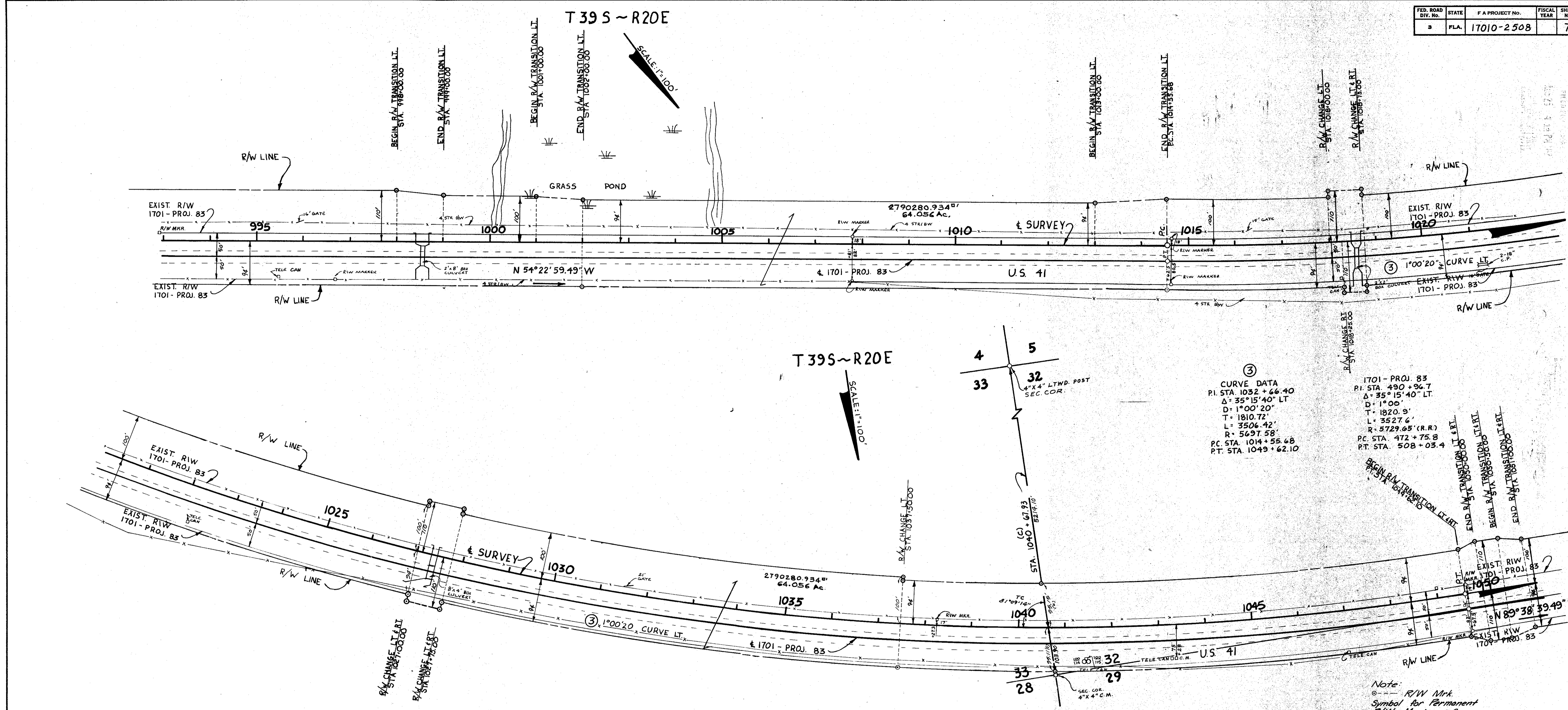
S.R. 45, U.S. 41 M.P. 55  
 TO  
 EXISTING 4-LANE

(F) INDICATES FIELD DIMENSIONS

STATE OF FLORIDA DEPARTMENT OF TRANSPORTATION			
<b>RIGHT OF WAY MAP</b>			
STATE ROAD NO. SR 45, US 41 SARASOTA COUNTY			
DRAWN	BY	DATE	APPROVED BY
J.W.H.	J.W.H.	6-19-72	C.W. Monte...
TRACED	M.H.D.	6-20-72	District Engineer
CHECKED	R.H.C.	11-1-72	Engineer of Right of Way
COMPARED	C.J.K.	12-5-73	
INDEXED			
REVISION	BY	DATE	

SECTION 17010-2508 SHEET 5 OF

FED. ROAD DIV. NO.	STATE	F. A. PROJECT NO.	FISCAL YEAR	SHEET NO.
3	FLA.	17010-2508		7

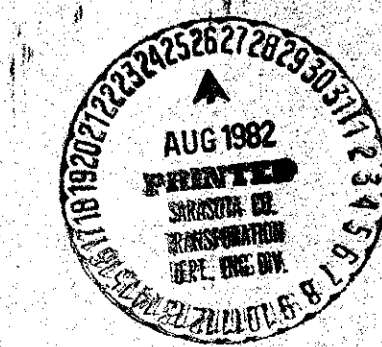


③ CURVE DATA  
 P.I. STA. 1032+66.40  
 $\Delta = 35^{\circ}15'40''$  LT  
 $D = 1^{\circ}00'20''$   
 $T = 1810.72$   
 $L = 3506.42'$   
 $R = 5729.65'$  (R.R.)  
 P.C. STA. 1014+55.68  
 P.T. STA. 1049+62.10

1701-PROJ. 83  
 P.I. STA. 490+96.7  
 $\Delta = 35^{\circ}15'40''$  LT  
 $D = 1^{\circ}00'$   
 $T = 1820.9'$   
 $L = 3527.6'$   
 $R = 5729.65'$  (R.R.)  
 P.C. STA. 472+75.8  
 P.T. STA. 508+03.4

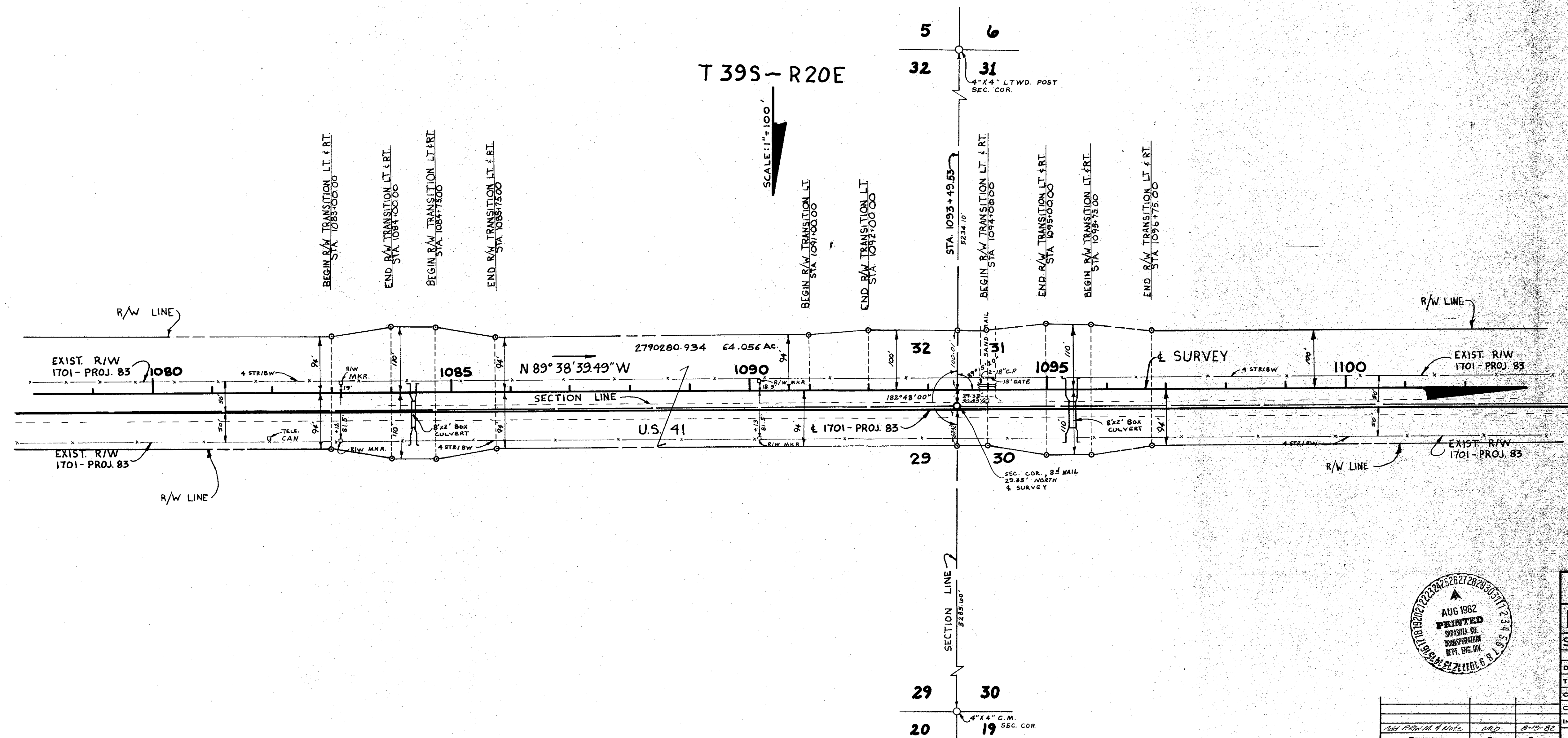
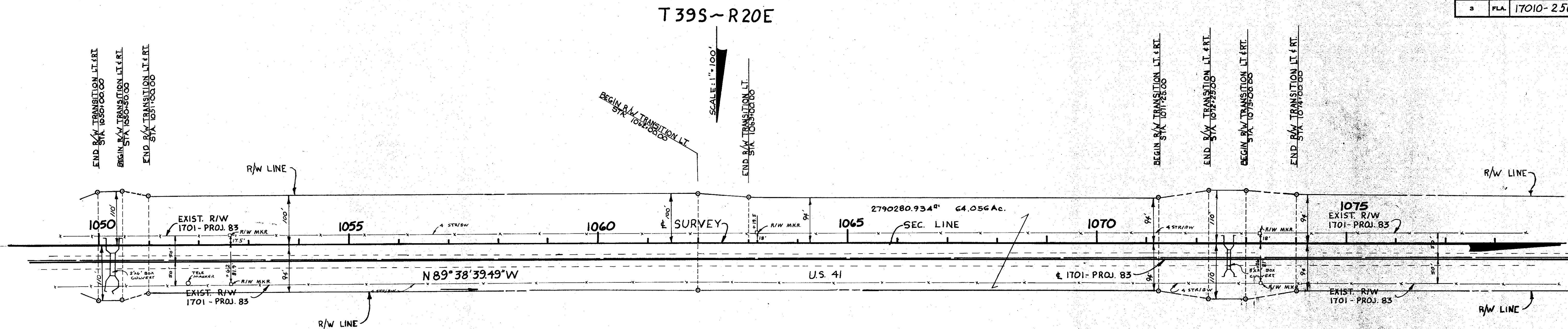
Note:  
 ○ --- R/W Mkr.  
 Symbol for Permanent R/W Markers. See sheet No. 1 for details.

INSERT  
 SR 45, U.S. 41 M.P. 5.5  
 TO EXISTING 4-LANE



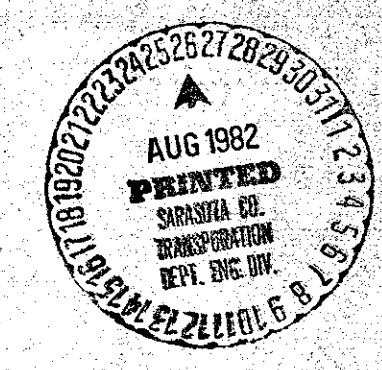
(C) INDICATES OFFICE CALCULATIONS				
STATE OF FLORIDA DEPARTMENT OF TRANSPORTATION				
<b>RIGHT OF WAY MAP</b>				
STATE ROAD No. 45, U.S. 41 SARASOTA COUNTY				
BY	DATE	APPROVED BY	DATE	
J.W.H.	6-20-72	C.W. Monte	5/10/73	
J.W.H.	7-26-72			
R.H.C.	11-3-72			
C.U.K.	12-5-73			
INDEXED	BY	DATE	STATE HIGHWAY ENGINEER	
REVISION	BY	DATE	SECTION. 17010-2508 SHEET 7 OF	

FED. ROAD DIV. No.	STATE	F A PROJECT No.	FISCAL YEAR	SHEET No.
3	FLA.	17010-2508		8



Note:  
 --- R/W Mkr  
 Symbol for Permanent  
 R/W Markers. See  
 sheet No. 1 for details.

INSERT  
 S.R. 45, U.S. 41 M.P. 55  
 TO EXISTING 4-LANE

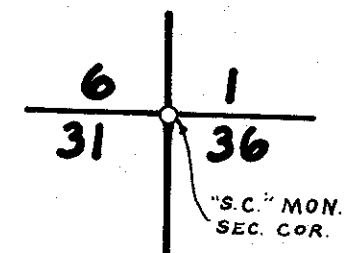
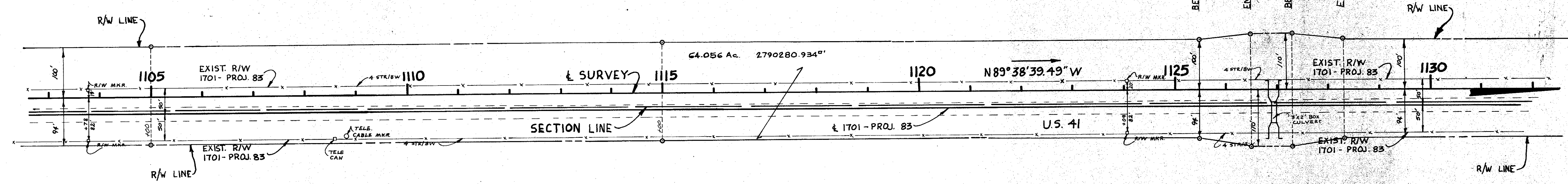
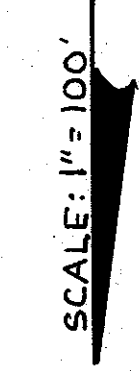


STATE OF FLORIDA DEPARTMENT OF TRANSPORTATION			
<b>RIGHT OF WAY MAP</b>			
STATE ROAD No. 45 U.S. 41 SARASOTA COUNTY			
DATE	DATE	DATE	DATE
DRAWN J.W.H. 6-26-72	APPROVED BY C. U. K. 5/10/82		
TRACED J.W.H. 7-28-72			
CHECKED R.H.C. 11-3-72			
COMPARED C. U. K. 12-5-73			
INDEXED	BY	DATE	STATE HIGHWAY ENGINEER
REVISION	BY	DATE	

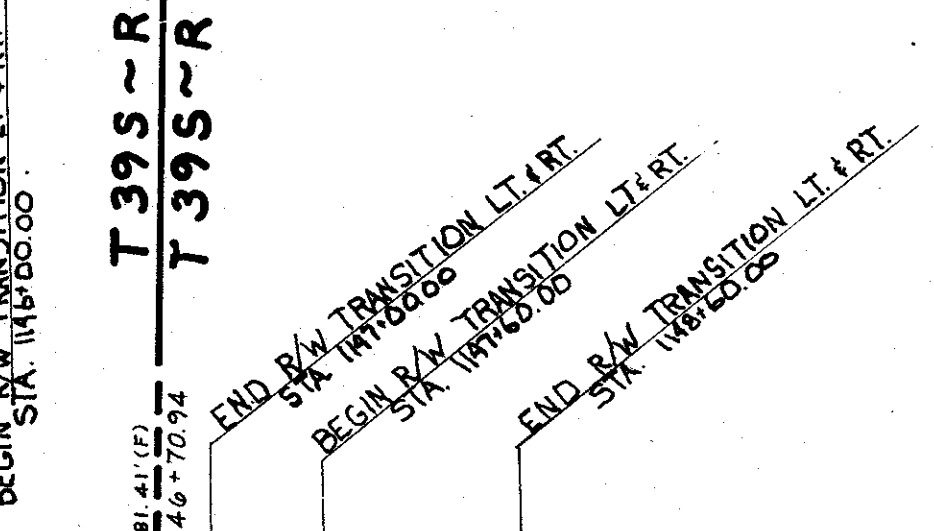
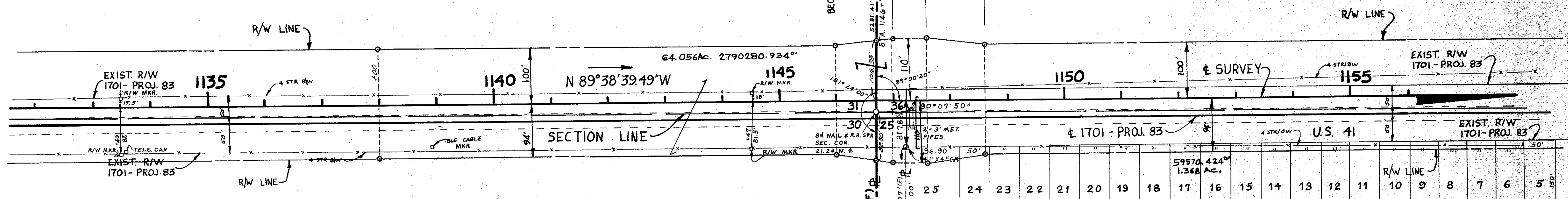
R.P.B. 1 P. 114 H

FED. ROAD DIV. No.	STATE	F A PROJECT No.	FISCAL YEAR	SHEET No.
3	FLA.	17010-2508		9

T 39S ~ R20E

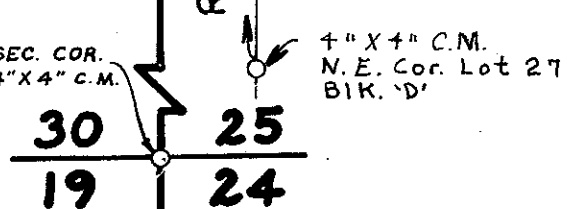


T 39S ~ R20E  
T 39S ~ R19E

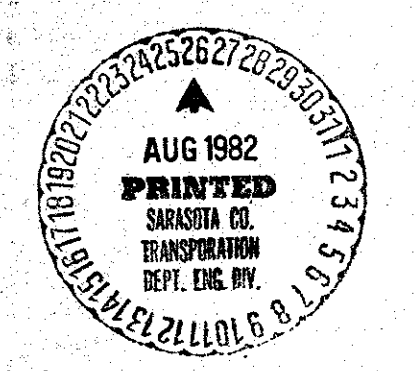


T 39S ~ R20E  
T 39S ~ R19E

RANGE LINE (F)  
RANGE LINE (PLAT)  
BY (PLAT)  
BY (PLAT)



Note:  
○ --- R/W Mkr.  
Symbol for Permanent R/W Markers. See sheet No. 1 for details.



INSERT  
SR. 45, U.S. 41 M.P. 5.5  
TO EXISTING 4-LANE

MIAMI FARMS PROJECT No. 1  
Filed May 12, 1941; P.B. 7, Pg. 92 & 93

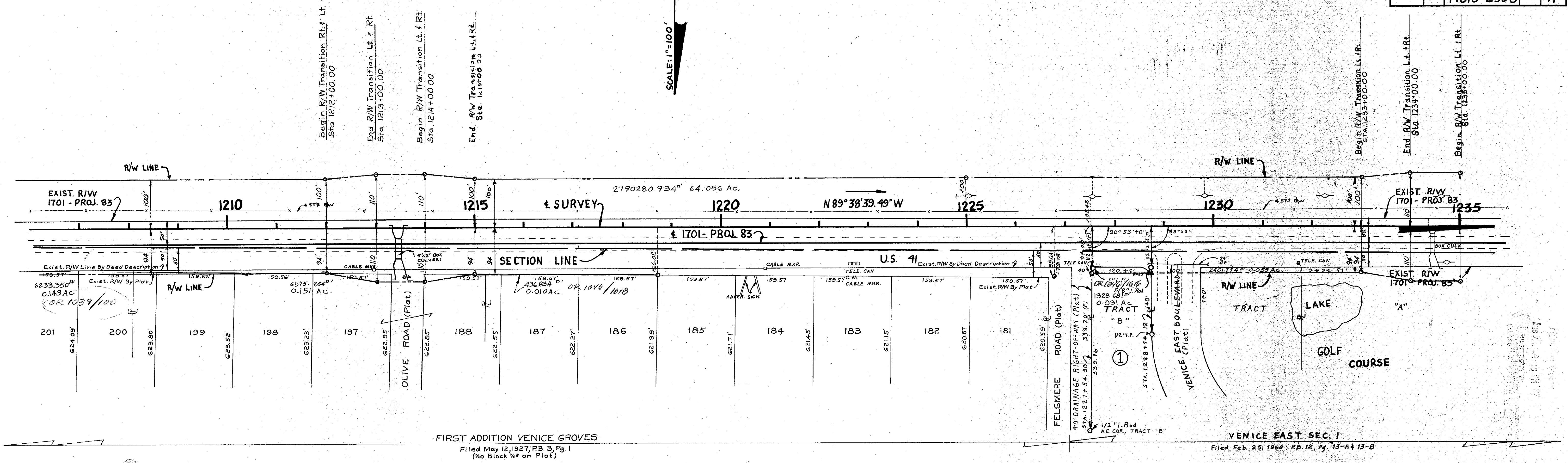
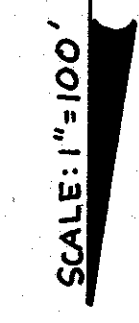
STATE OF FLORIDA DEPARTMENT OF TRANSPORTATION			
<b>RIGHT OF WAY MAP</b>			
STATE ROAD No. 45, U.S. 41 SARASOTA COUNTY			
BY	DATE	APPROVED BY	DATE
DRAWN	J.W.H. 6-30-72	C.W. Monte	Dec 5/10/73
TRACED	J.W.H. 7-28-72		
CHECKED	R.H.C. 11-6-72		
COMPARED	C.U.K. 12-5-73		
INDEXED			
REVISION	BY	DATE	
1			

SECTION 17010-2508 SHEET 9 OF 9



FED. ROAD DIV. No.	STATE	F A PROJECT No.	FISCAL YEAR	SHEET No.
3	FLA.	17010-2508		11

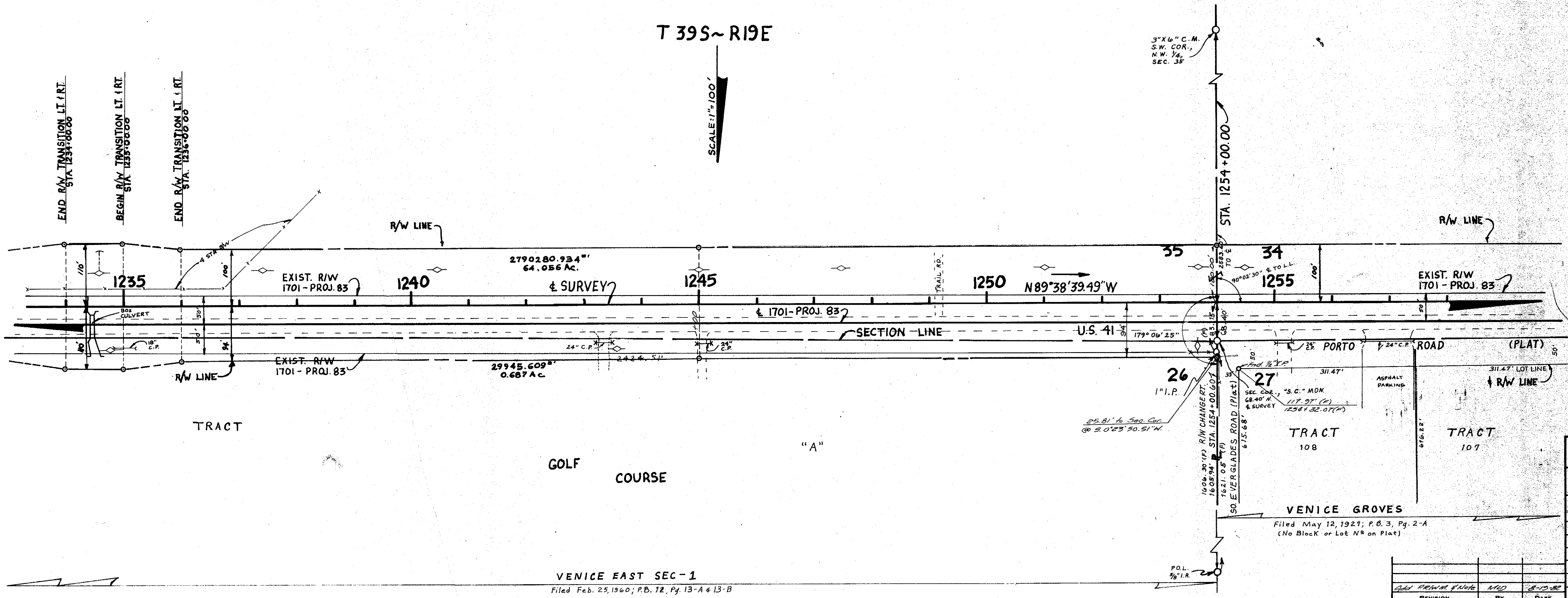
T 395~R19E



FIRST ADDITION VENICE GROVES  
Filed May 12, 1927; P.B. 3, Pg. 1  
(No Block No on Plat)

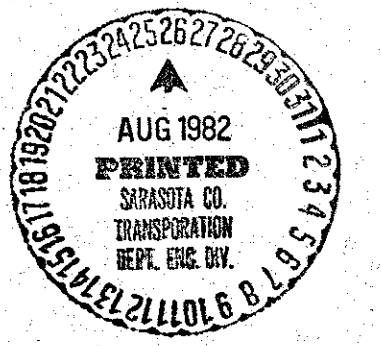
VENICE EAST SEC. 1  
Filed Feb. 25, 1960; P.B. 12, Pg. 13-A+13-B

T 395~R19E



VENICE EAST SEC. 1  
Filed Feb. 25, 1960; P.B. 12, Pg. 13-A+13-B

VENICE GROVES  
Filed May 12, 1927; P.B. 3, Pg. 2-A  
(No Block or Lot No on Plat)

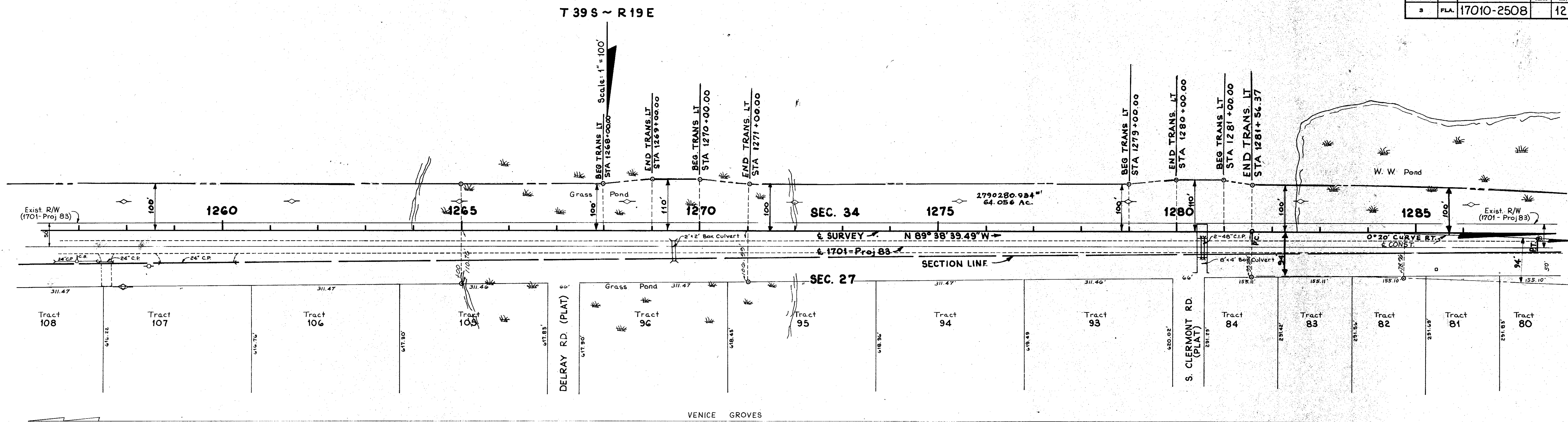


Note:  
○ --- R/W Mkr.  
Symbol for Permanent R/W Markers. See sheet No. 1 for details.

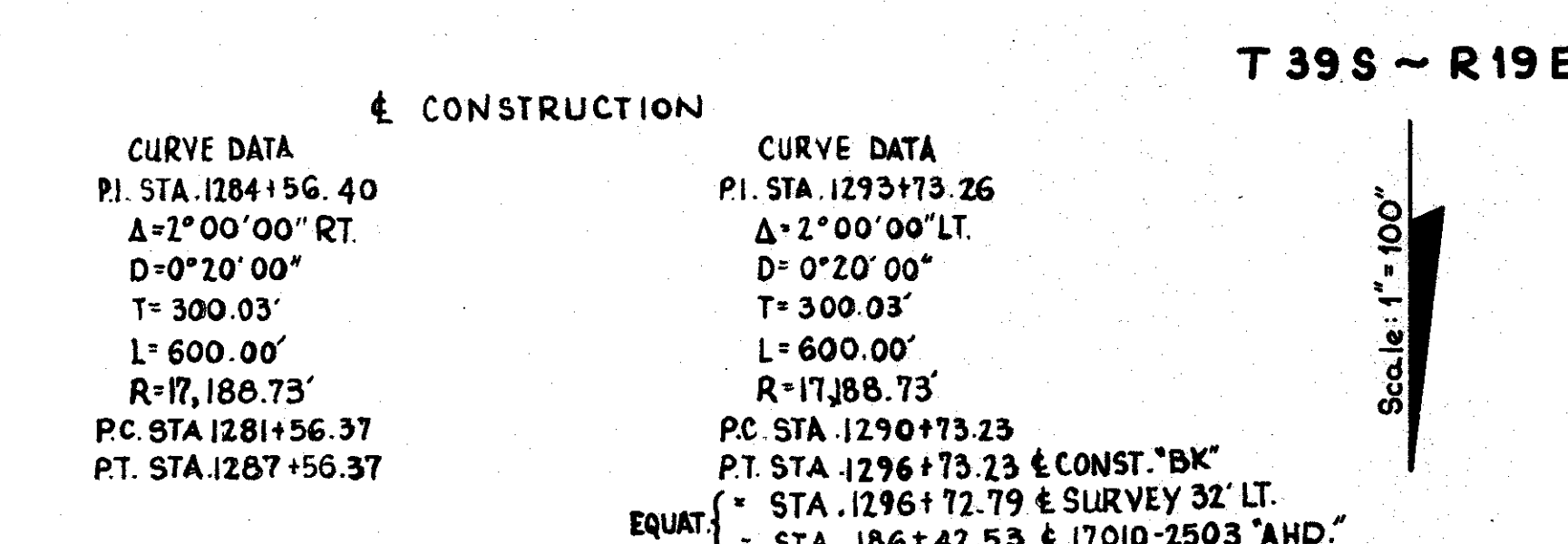
INSERT  
S.R. 45, U.S. 41 M.P. 5.5  
TO EXISTING 4-LANE

STATE OF FLORIDA DEPARTMENT OF TRANSPORTATION			
<b>RIGHT OF WAY MAP</b>			
STATE ROAD NO. 45, U.S. 41 SARASOTA COUNTY			
BY	DATE	APPROVED BY	DATE
DRAWN	J.W.H. 7-18-72	C.W. Monte De Rosa	5/10/73
TRACED	J.W.H. 8-2-72		
CHECKED	R.H.C. 11-28-72		
COMPARED	C.U.K. 12-5-73		
INDEXED			
SECTION. 17010-2508 SHEET 11 OF			

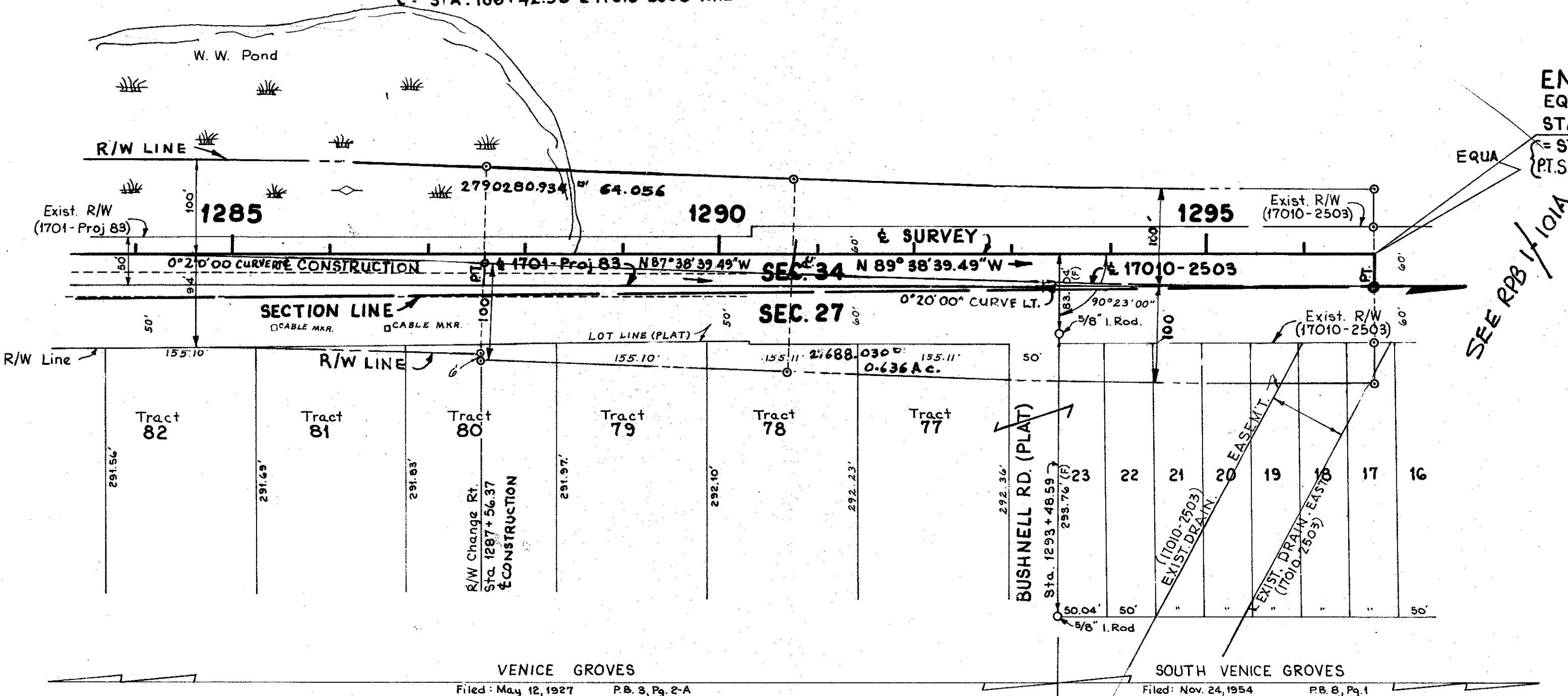
FED. ROAD DIV. No.	STATE	F.A. PROJECT No.	FISCAL YEAR	SHEET No.
3	FLA.	17010-2508		12



VENICE GROVES  
 Filed: May 12, 1927 P.B. 3, Pg. 2-A  
 (No Block or Lot No on Plat.)



CONSTRUCTION CURVE DATA  
 PI. STA. 1284+56.40  
 Δ=2°00'00\"/>

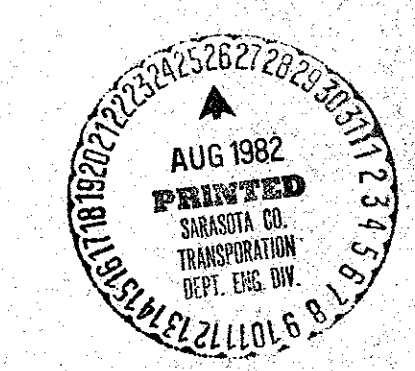


END R/W JOB EQUATION:  
 STA 1296+72.79 & SURVEY 32' LT  
 = STA 186+42.53 & 17010-2503 "AHD"  
 = STA 1296+73.23 & CONSTRUCTION "BK"

BEARING EQUATION:  
 N 89° 45' 30\"/>

Note:  
 --- R/W Mkr.  
 Symbol for Permanent R/W Markers. See sheet No. 1 for details.

INSERT  
 S.R. 45, U.S. 41  
 M.P. 5.5 TO EXISTING 4-LANE



(P) Indicates Field Dimension

STATE OF FLORIDA DEPARTMENT OF TRANSPORTATION			
<b>RIGHT OF WAY MAP</b>			
STATE ROAD No. 45, U.S. 41		SARASOTA COUNTY	
BY	DATE	APPROVED BY	DATE
J.W.H.	8-1-72	<i>C.W. Monte...</i>	5/10/73
TRACED	M.H.D.	8-30-72	
CHECKED	R.H.C.	11-28-72	
COMPARED	C.U.K.	12-5-73	
INDEXED			
REVISION	BY	DATE	

VENICE GROVES  
 Filed: May 12, 1927 P.B. 3, Pg. 2-A  
 (No Block or Lot No on Plat.)

SOUTH VENICE GROVES  
 Filed: Nov. 24, 1954 P.B. 8, Pg. 1  
 (No Block No on Plat.)