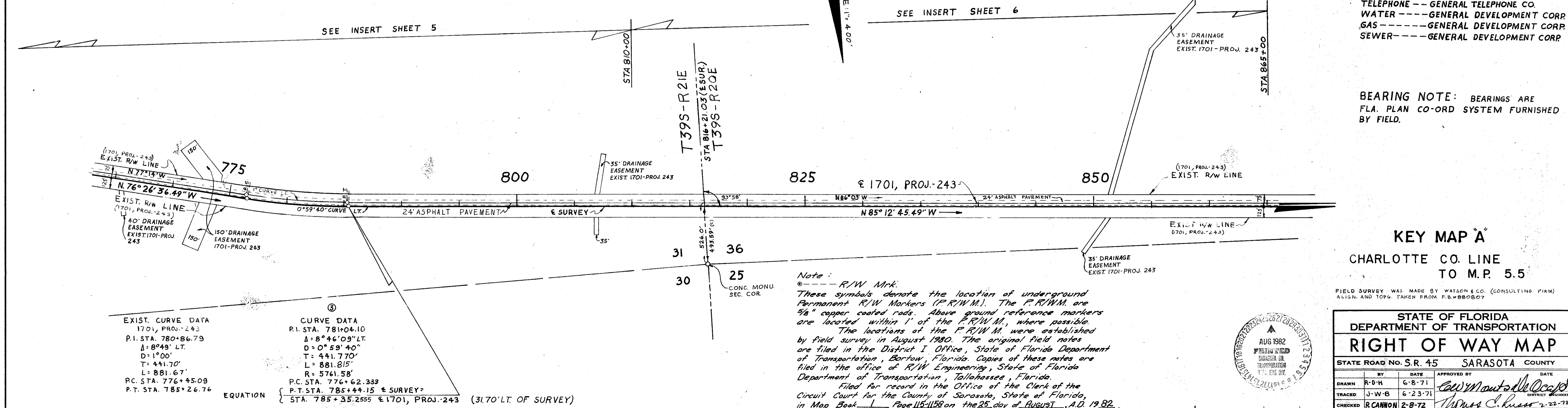
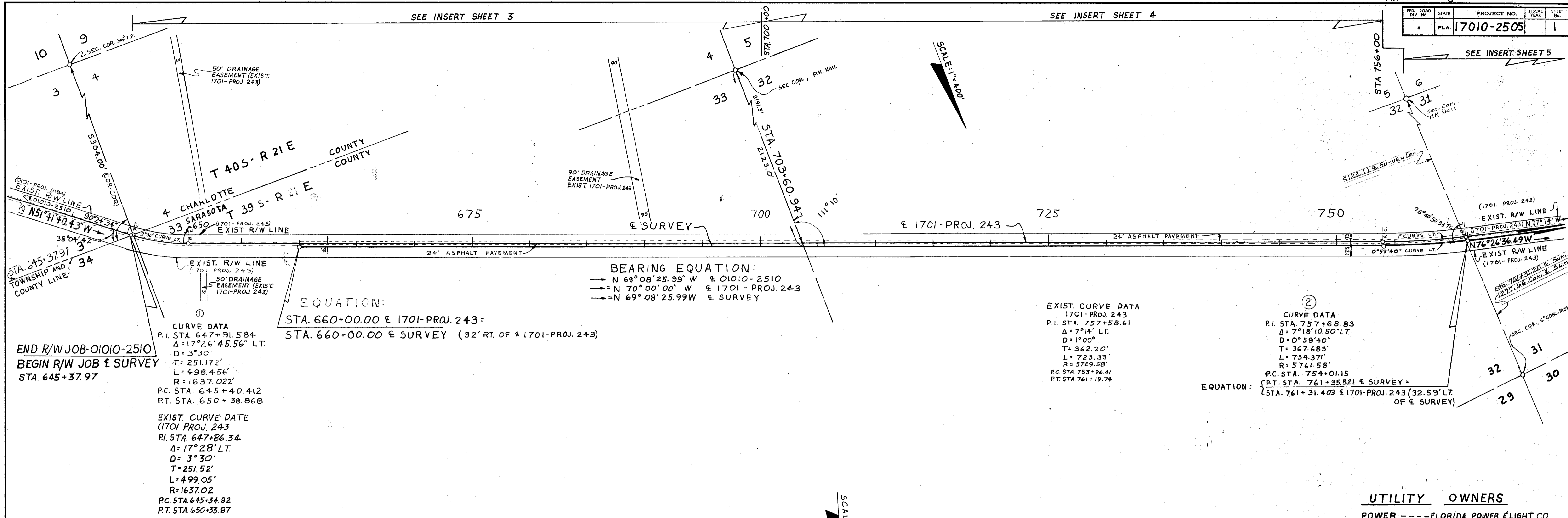
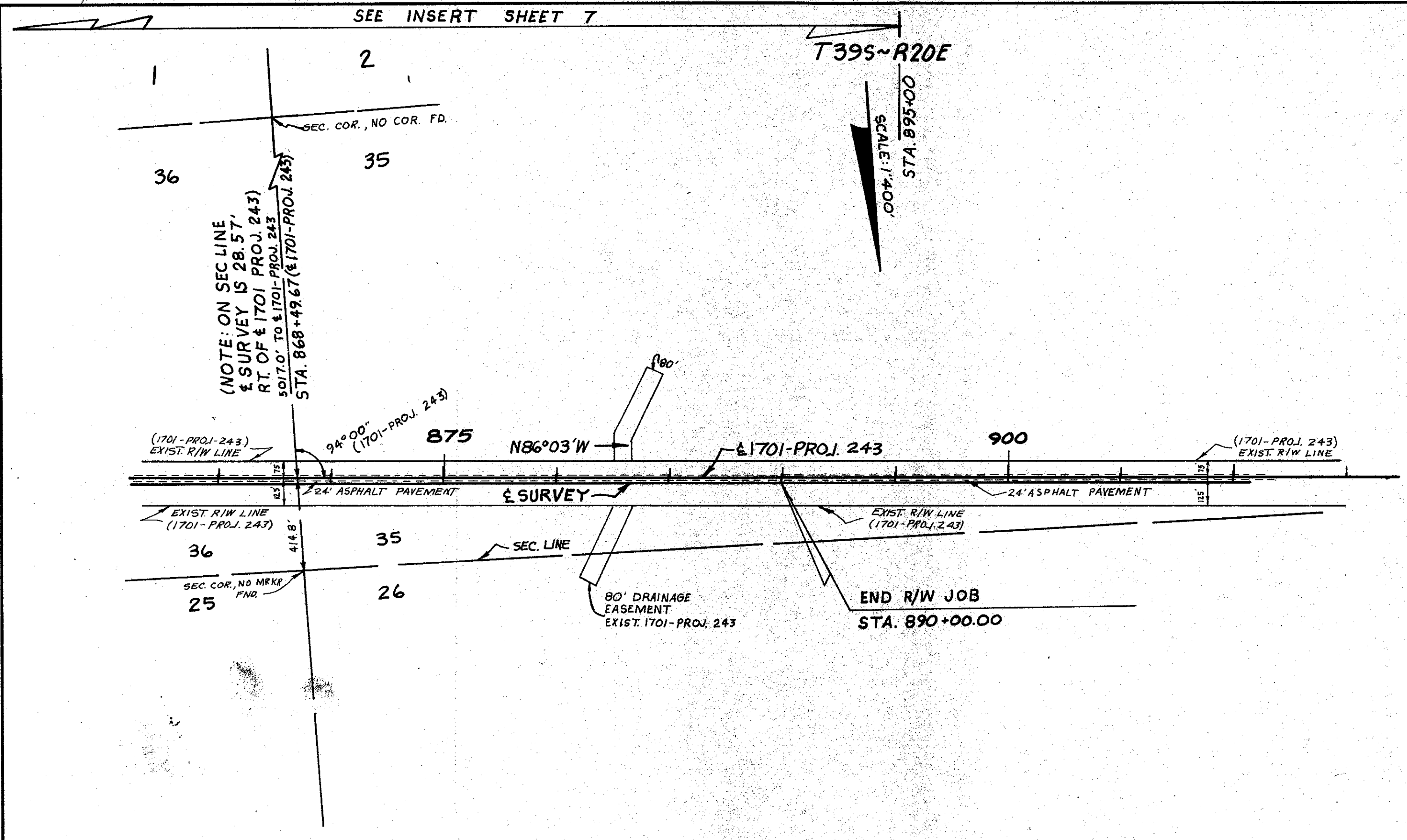


FED. ROAD DIV. NO.	STATE	PROJECT NO.	FISCAL YEAR	SHEET NO.
3	FLA.	17010-2505		1



Note: --- R/W Mkr.
 These symbols denote the location of underground Permanent R/W Markers (P.R.W.M.). The P.R.W.M. are 5/8" copper coated rods. Above ground reference markers are located within 1' of the P.R.W.M., where possible.
 The locations of the P.R.W.M. were established by field survey in August 1980. The original field notes are filed in the District I Office, State of Florida Department of Transportation, Bartow, Florida. Copies of these notes are filed in the office of R/W Engineering, State of Florida Department of Transportation, Tallahassee, Florida.
 Filed for record in the Office of the Clerk of the Circuit Court for the County of Sarasota, State of Florida, in Map Book 1 Page 115-115B on the 25 day of AUGUST, A.D. 1982.
 [Signature]
 Clerk of the Circuit Court Sarasota County, Florida.

FED. ROAD DIV. No.	STATE	PROJECT No.	FISCAL YEAR	SHEET No.
3	FLA.	17010-2505		2



FILED FOR RECORD
 AUG 25 1982
 H. J. B. P. 4
 1701-PROJ. 243

KEY MAP "B"
 CHARLOTTE COUNTY LINE TO M.P. 5.5

FIELD SURVEY WAS MADE BY WATSON AND CO. (CONSULTING FIRM)
 ALIGN. AND TOPOG. TAKEN FROM FB*880807



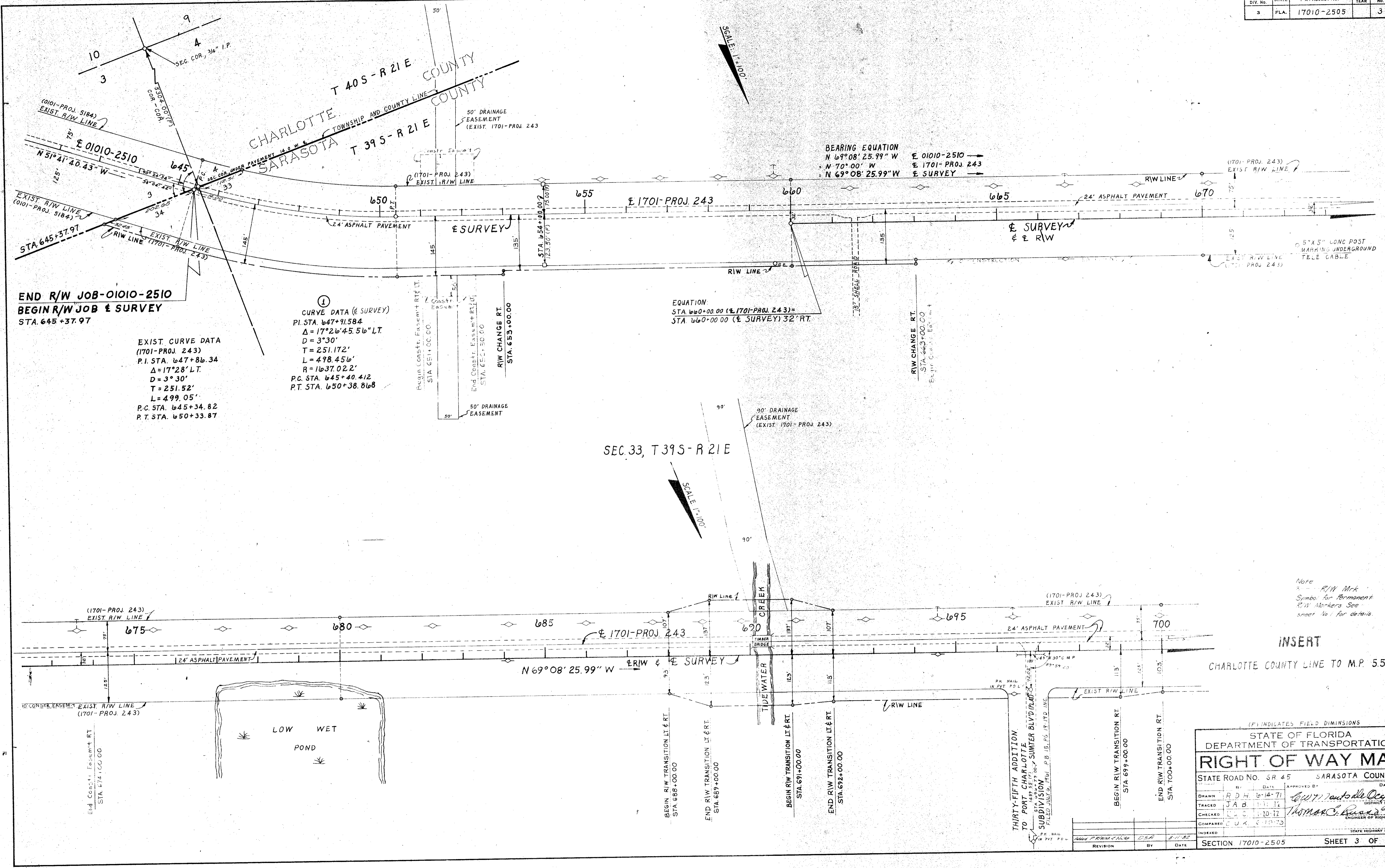
STATE OF FLORIDA
 DEPARTMENT OF TRANSPORTATION
RIGHT OF WAY MAP

STATE ROAD No. 45 SARASOTA COUNTY

DRAWN	BY	DATE	APPROVED BY	DATE
	R.O.H.	6-9-71	<i>Tom C. Bass</i>	
	A.J.D.	10-12-71		
	R.CANNON	2-8-72		

REVISION	BY	DATE

FED. ROAD DIV. No.	STATE	F.A. PROJECT No.	FISCAL YEAR	SHEET No.
3	FLA.	17010-2505		3



END R/W JOB-01010-2510
 BEGIN R/W JOB & SURVEY
 STA. 645+37.97

EXIST. CURVE DATA
 (1701-PROJ. 243)
 P.I. STA. 647+86.34
 $\Delta = 17^{\circ}28' LT.$
 $D = 3^{\circ}30'$
 $L = 251.52'$
 $R = 499.05'$
 P.C. STA. 645+34.82
 P.T. STA. 650+33.87

① CURVE DATA (& SURVEY)
 P.I. STA. 647+91.584
 $\Delta = 17^{\circ}26'45.56" LT.$
 $D = 3^{\circ}30'$
 $T = 251.172'$
 $L = 498.456'$
 $R = 1637.022'$
 P.C. STA. 645+40.412
 P.T. STA. 650+38.868

BEARING EQUATION
 $N 69^{\circ}08'25.99" W$ E 01010-2510
 $N 70^{\circ}00' W$ E 1701-PROJ. 243
 $N 69^{\circ}08'25.99" W$ E SURVEY

EQUATION
 STA. 660+00.00 (E 1701-PROJ. 243) =
 STA. 660+00.00 (E SURVEY) 32' RT.

Note
 - R/W Mks
 - Symbols for Permanent
 - R/W Markers See
 sheet No. 1 for details.

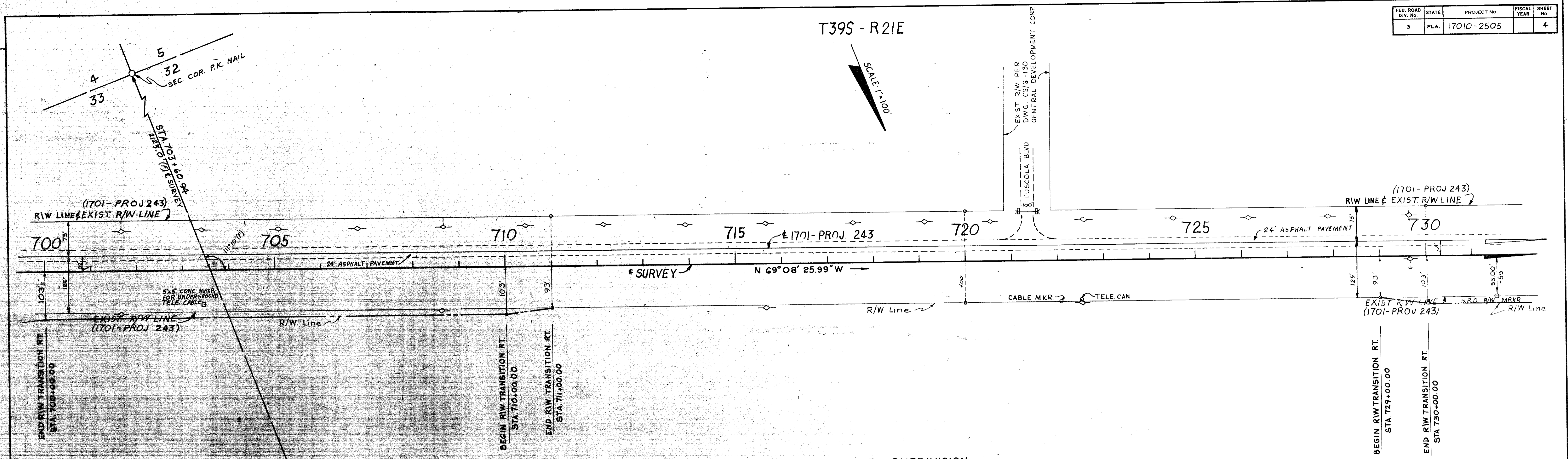
INSERT
 CHARLOTTE COUNTY LINE TO M.P. 5.5

(F) INDICATES FIELD DIMENSIONS

STATE OF FLORIDA DEPARTMENT OF TRANSPORTATION	
RIGHT OF WAY MAP	
STATE ROAD No. SR 45	SARASOTA COUNTY
DATE: 10-14-71	APPROVED BY: <i>Thomas C. Swartz</i>
DRAWN: B.D.H.	DISTRICT ENGINEER
TRACED: J.A.B.	6-7-73
CHECKED: C.U.A.	ENGINEER OF RIGHT OF WAY
INDEXED:	STATE HIGHWAY ENGINEER

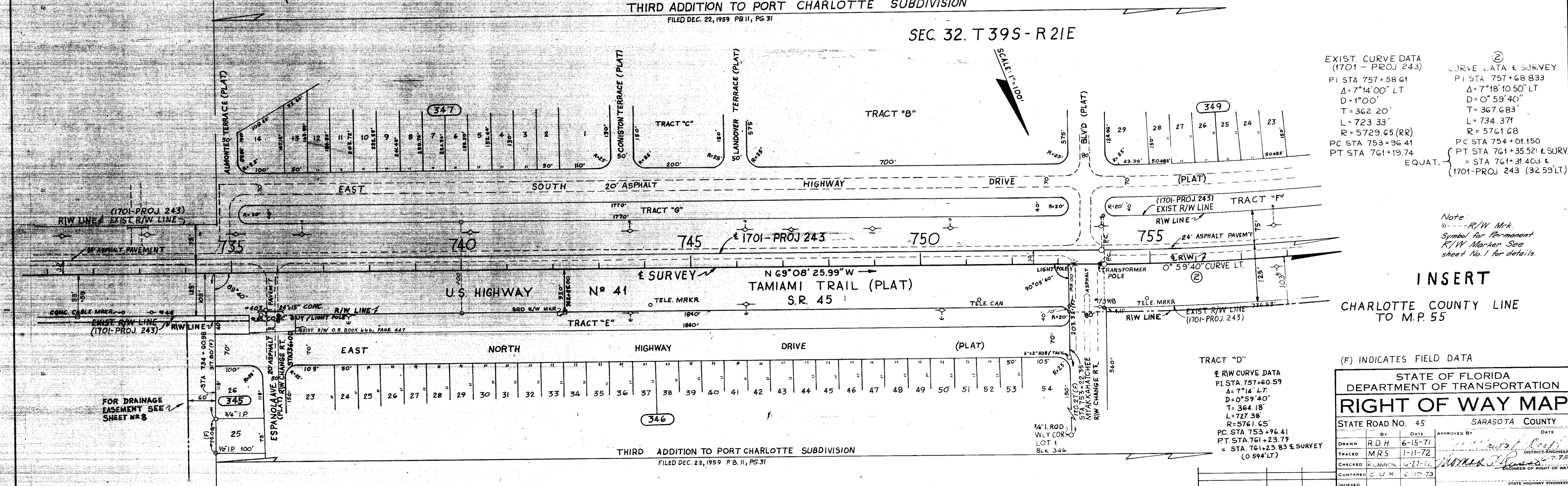
SECTION 17010-2505 SHEET 3 OF

FED. ROAD DIV. No.	STATE	PROJECT No.	FISCAL YEAR	SHEET No.
3	FLA.	17010-2505		4



THIRD ADDITION TO PORT CHARLOTTE SUBDIVISION
FILED DEC. 22, 1959 P.B. 11, PG. 31

SEC. 32. T 39S - R 21E



EXIST. CURVE DATA (1701 - PROJ 243)

PI STA 757+58.61	Δ = 7° 14' 00" LT	D = 1° 00'	T = 362.20'	L = 723.33'	R = 5729.65 (RR)	PC STA 753+96.41	PT STA 761+19.74
------------------	-------------------	------------	-------------	-------------	------------------	------------------	------------------

EQUAT. = STA 761+31.403 ±

EXIST. CURVE DATA & SURVEY

PI STA 757+68.833	Δ = 7° 18' 10.50" LT	D = 0° 59' 40"	T = 367.683'	L = 734.371'	R = 5761.68	PC STA 754+01.150	PT STA 761+35.521 ± SURV.
-------------------	----------------------	----------------	--------------	--------------	-------------	-------------------	---------------------------

= STA 761+31.403 ±

Note:
 ○ --- R/W Mkr.
 Symbol for Permanent R/W Marker. See sheet No. 1 for details.

INSERT
 CHARLOTTE COUNTY LINE TO M.P. 55

(F) INDICATES FIELD DATA

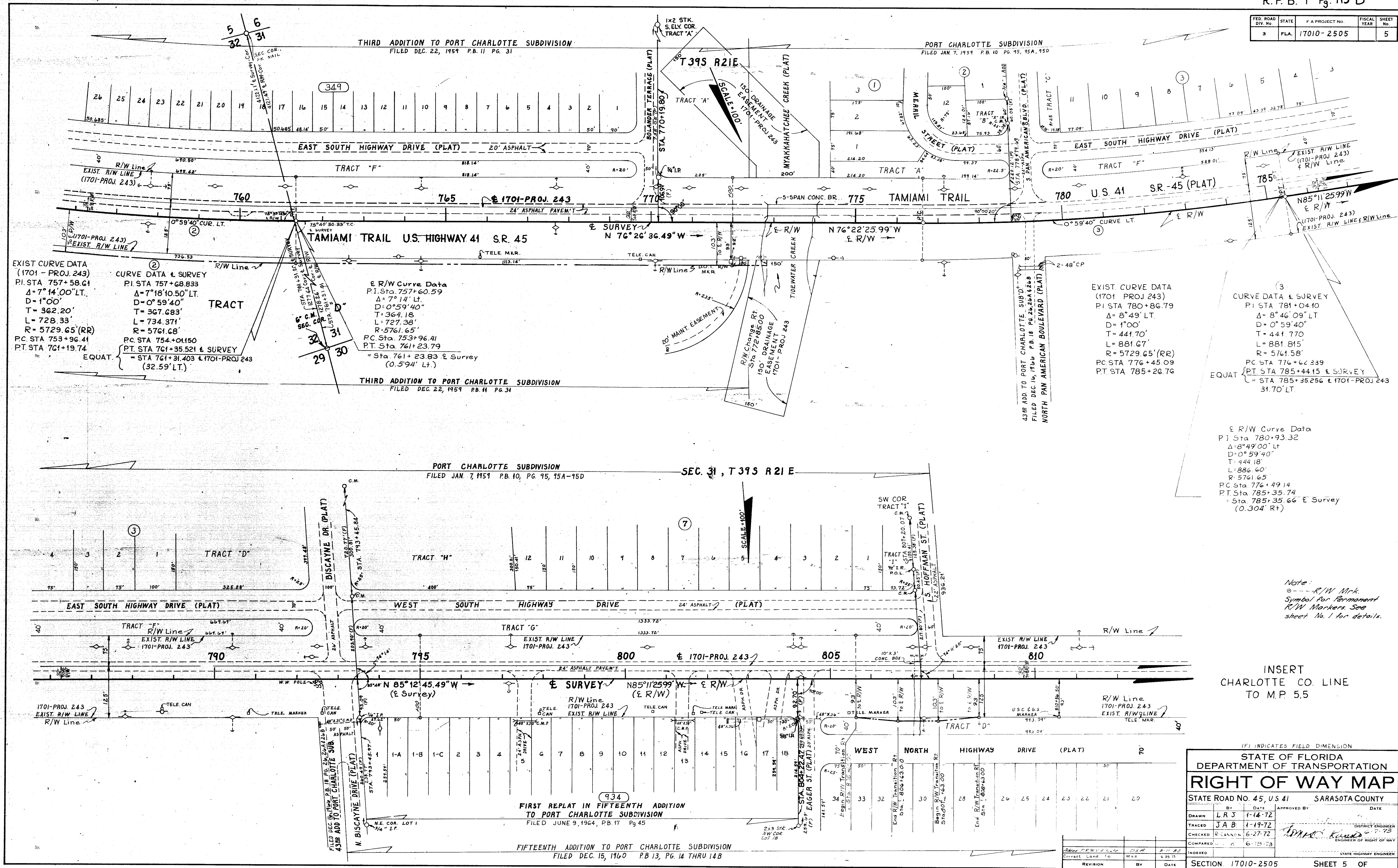
STATE OF FLORIDA		SARASOTA COUNTY	
DEPARTMENT OF TRANSPORTATION			
RIGHT OF WAY MAP			
STATE ROAD No. 45		DATE	
BY	DATE	APPROVED BY	DATE
DRAWN R.D.H.	6-15-71		
TRACED M.R.S.	1-11-72		
CHECKED K.LANNON	6-27-76		
COMPARED C.U.K.	6-10-73		
INDEXED			

SECTION 17010-2505 SHEET 4 OF

TRACT "D"
 R/W CURVE DATA
 PI STA 757+60.59
 Δ = 7° 14' LT
 D = 0° 59' 40"
 T = 364.18'
 L = 727.38'
 R = 5761.65'
 PC STA 753+96.41
 PT STA 761+23.79
 = STA 761+23.83 ± SURVEY (0.594' LT)

THIRD ADDITION TO PORT CHARLOTTE SUBDIVISION
 FILED DEC. 22, 1959 P.B. 11, PG. 31

FED. ROAD DIV. No.	STATE	F.A. PROJECT No.	FISCAL YEAR	SHEET No.
3	FLA.	17010-2505		5



EXIST CURVE DATA (1701-PROJ. 243)
 P.I. STA 757+58.61
 $\Delta = 7^{\circ}14'00''$ LT.
 $D = 1^{\circ}00'$
 $T = 362.20'$
 $L = 728.33'$
 $R = 5729.65'$ (RR)
 P.C. STA 753+96.41
 P.T. STA 761+19.74

CURVE DATA & SURVEY
 P.I. STA 757+68.833
 $\Delta = 7^{\circ}18'10.50''$ LT.
 $D = 0^{\circ}59'40''$
 $T = 367.683'$
 $L = 734.371'$
 $R = 5761.68'$
 P.C. STA 754+04.150
 P.T. STA 761+35.521 & SURVEY
 = STA 761+31.403 & 1701-PROJ. 243
 (32.59' LT.)

E R/W Curve Data
 P.I. Sta. 757+60.59
 $\Delta = 7^{\circ}14'$ LT.
 $D = 0^{\circ}59'40''$
 $T = 364.18'$
 $L = 727.38'$
 $R = 5761.65'$
 P.C. Sta. 753+96.41
 P.T. Sta. 761+23.79
 = Sta. 761+23.83 & Survey
 (0.594' Lt.)

EXIST CURVE DATA (1701 PROJ. 243)
 P.I. STA 780+86.79
 $\Delta = 8^{\circ}49'09''$ LT.
 $D = 1^{\circ}00'$
 $T = 441.70'$
 $L = 881.67'$
 $R = 5729.65'$ (RR)
 P.C. STA 776+45.09
 P.T. STA 785+26.76

CURVE DATA & SURVEY
 P.I. STA 781+04.10
 $\Delta = 8^{\circ}46'09''$ LT.
 $D = 0^{\circ}59'40''$
 $T = 441.770'$
 $L = 881.815'$
 $R = 5761.58'$
 P.C. STA 776+42.339
 P.T. STA 785+44.15 & SURVEY
 = STA 785+35.256 & 1701-PROJ. 243
 31.70' LT.

E R/W Curve Data
 P.I. Sta 780+93.32
 $\Delta = 8^{\circ}49'00''$ LT.
 $D = 0^{\circ}59'40''$
 $T = 444.18'$
 $L = 886.60'$
 $R = 5761.65'$
 P.C. Sta 776+49.14
 P.T. Sta 785+35.74
 = Sta 785+35.66 & Survey
 (0.304' Rt.)

Note:
 ○ --- R/W Mkr.
 Symbol for Permanent R/W Markers See sheet No. 1 for details.

INSERT CHARLOTTE CO. LINE TO M.P. 5.5

(F) INDICATES FIELD DIMENSION

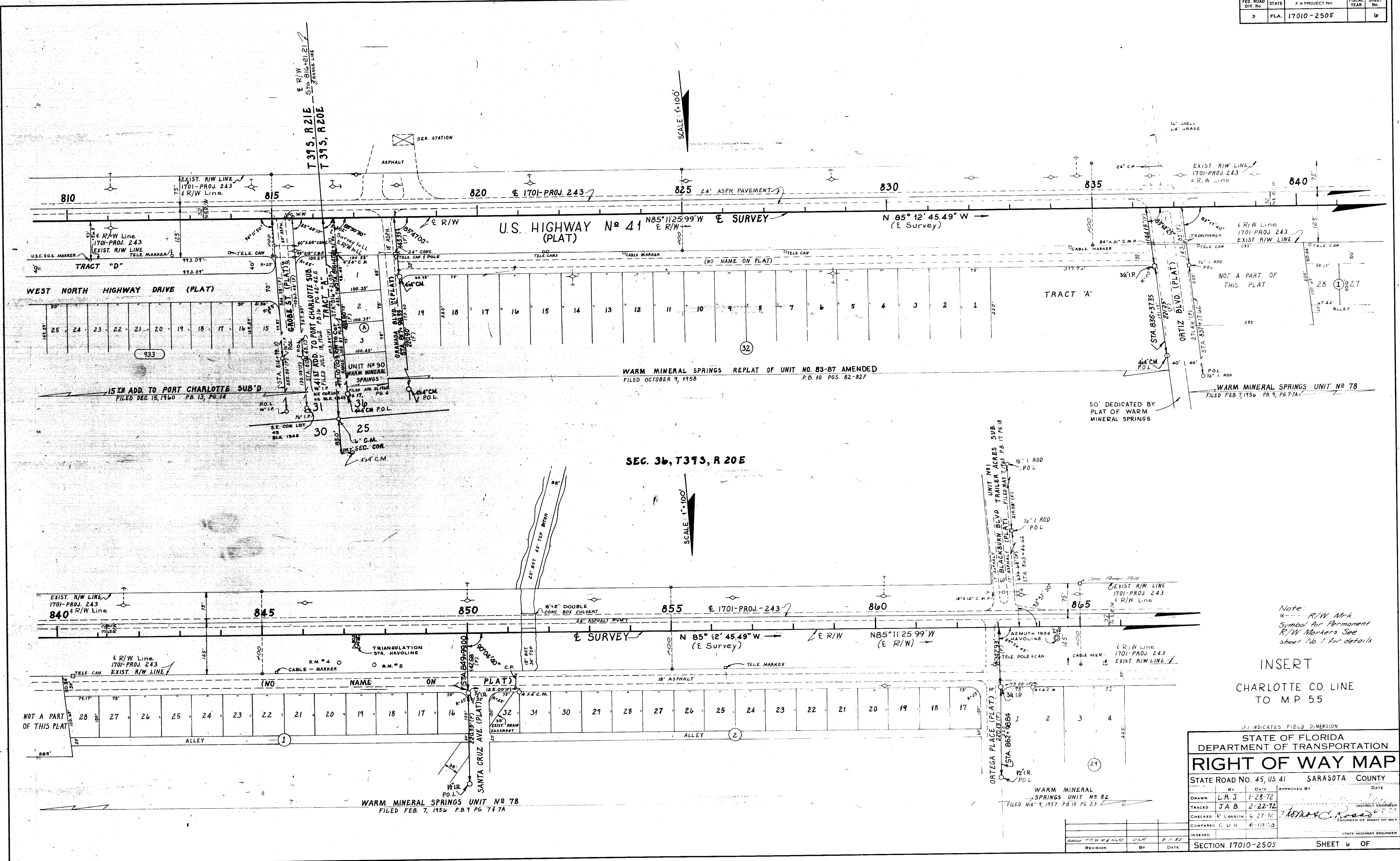
STATE OF FLORIDA
 DEPARTMENT OF TRANSPORTATION
RIGHT OF WAY MAP

STATE ROAD No. 45, U.S. 41 SARASOTA COUNTY

DRAWN	LRJ	DATE	1-14-72	APPROVED BY		DATE	
TRACED	JAB	DATE	1-19-72	DISTRICT ENGINEER		DATE	
CHECKED	R. CANNON	DATE	6-27-72				
COMPARED		DATE	6-19-73				

SECTION 17010-2505 SHEET 5 OF

FED. ROAD DIV. No.	STATE	F.A. PROJECT No.	FISCAL YEAR	SHEET No.
3	FLA.	17010-2505		6



Note:
 @--- R/W M.k.
 Symbol for Permanent
 R/W Markers See
 sheet No 1 for details

INSERT
 CHARLOTTE CO. LINE
 TO M.P. 5.5

(F) INDICATES FIELD DIMENSION

STATE OF FLORIDA DEPARTMENT OF TRANSPORTATION	
RIGHT OF WAY MAP	
STATE ROAD No. 45, US 41	SARASOTA COUNTY
BY L.R.J.	DATE 1-28-72
TRACED J.A.B.	DATE 2-22-72
CHECKED R. CANNON	DATE 6-27-76
COMPALED G.U.K.	DATE 6-19-73
INDEXED	DATE
REVISION	BY DATE

WARM MINERAL SPRINGS UNIT No 82
 FILED MAR 9, 1957 PB 10 PG 23

WARM MINERAL SPRINGS UNIT No 78
 FILED FEB 7, 1956 P.B. 9 PG. 7 & 7A

STATE HIGHWAY ENGINEER

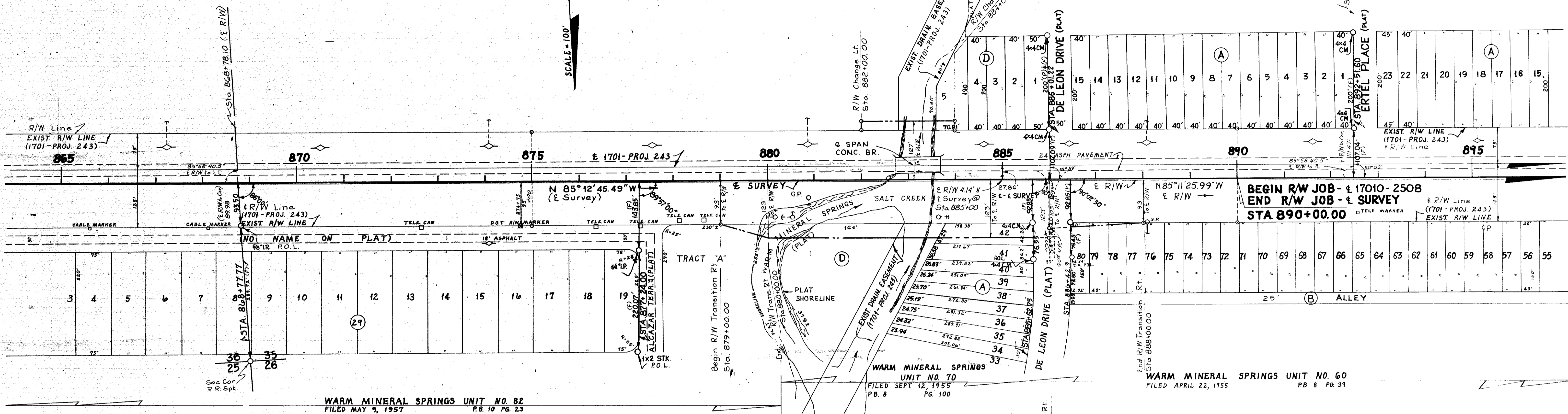
FILED	DATE	BY	REVISION

FED. ROAD DIV. No.	STATE	F. A. PROJECT No.	FISCAL YEAR	SHEET No.
3	FLA.	17010-2505		7

WARM MINERAL SPRINGS UNIT NO. 69 FILED SEPT 12, 1955
 WARM MINERAL SPRINGS UNIT NO. 67 FILED JUNE 14, 1955, P.B. 8, Pg. 70

T 39S, R 20E

SCALE = 100'



BEGIN R/W JOB - 17010-2508
 END R/W JOB - SURVEY
 STA 890+00.00

WARM MINERAL SPRINGS UNIT NO. 82
 FILED MAY 9, 1957 P.B. 10 Pg. 23

WARM MINERAL SPRINGS UNIT NO. 70
 FILED SEPT 12, 1955 P.B. 8 Pg. 100

WARM MINERAL SPRINGS UNIT NO. 60
 FILED APRIL 22, 1955 P.B. 8 Pg. 31

Note
 --- R/W Mrk
 Symbol for Permanent
 R/W Markers. See
 sheet No. 1 for details.

INSERT
SARASOTA CO. LINE
TO M.P. 5.5

(F) INDICATES FIELD DIMENSION

STATE OF FLORIDA
 DEPARTMENT OF TRANSPORTATION

RIGHT OF WAY MAP

STATE ROAD No. 45, U.S. 41 SARASOTA COUNTY

BY	DATE	APPROVED BY	DATE
DRAWN J A B	3-7-72		
TRACED J A B	3-13-72		
CHECKED R CANNON	6-18-72		
COMPARED C. U. K.	6-19-73		
INDEXED			

SECTION 17010-2505 SHEET 7 OF