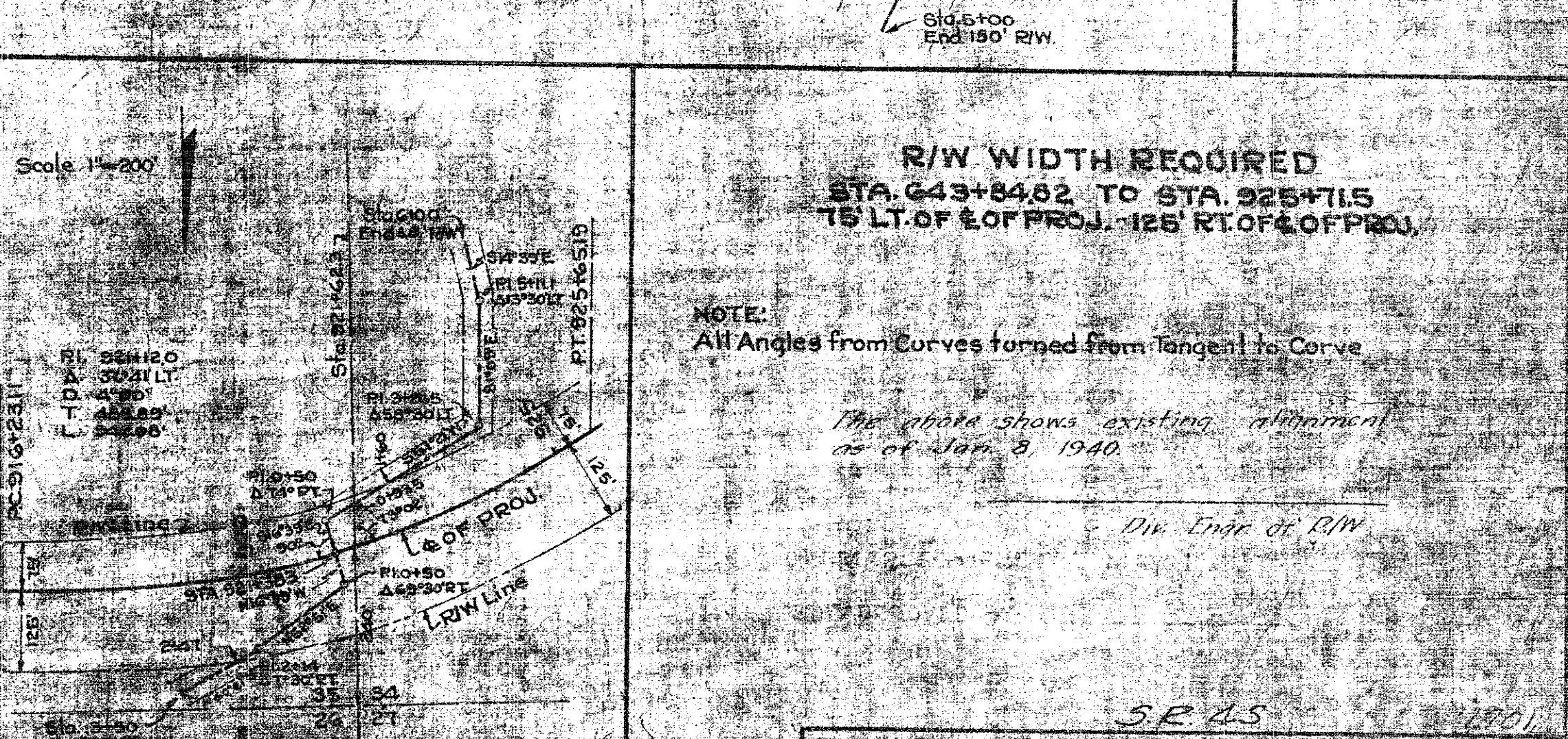
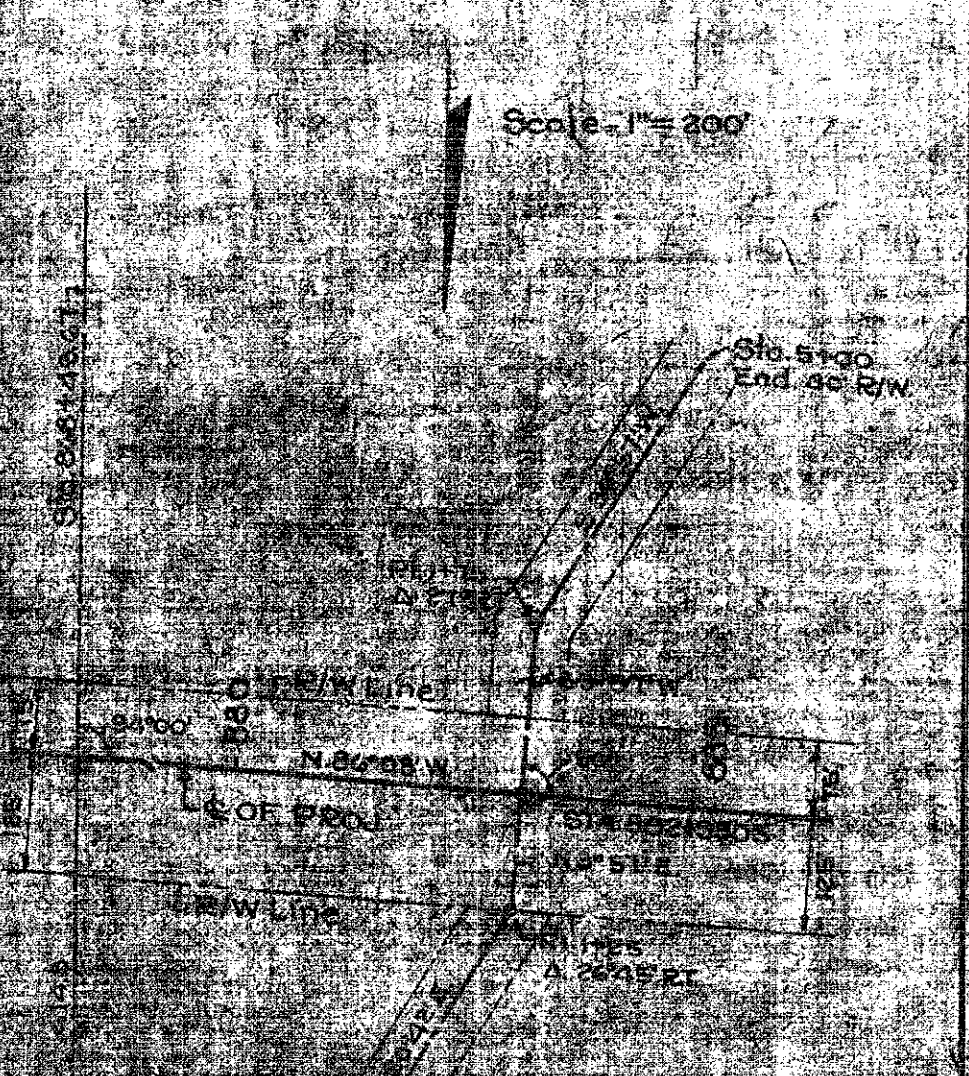
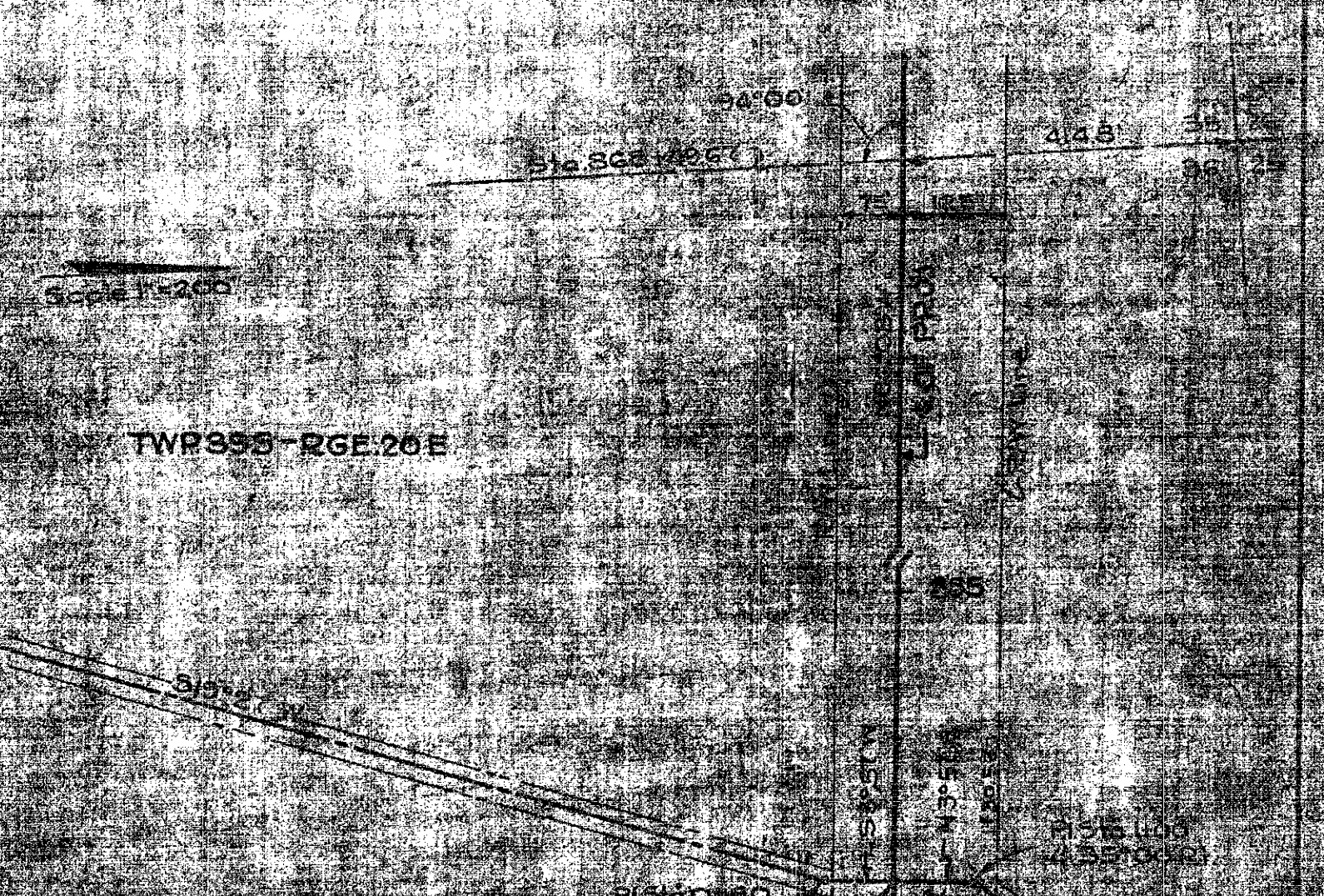
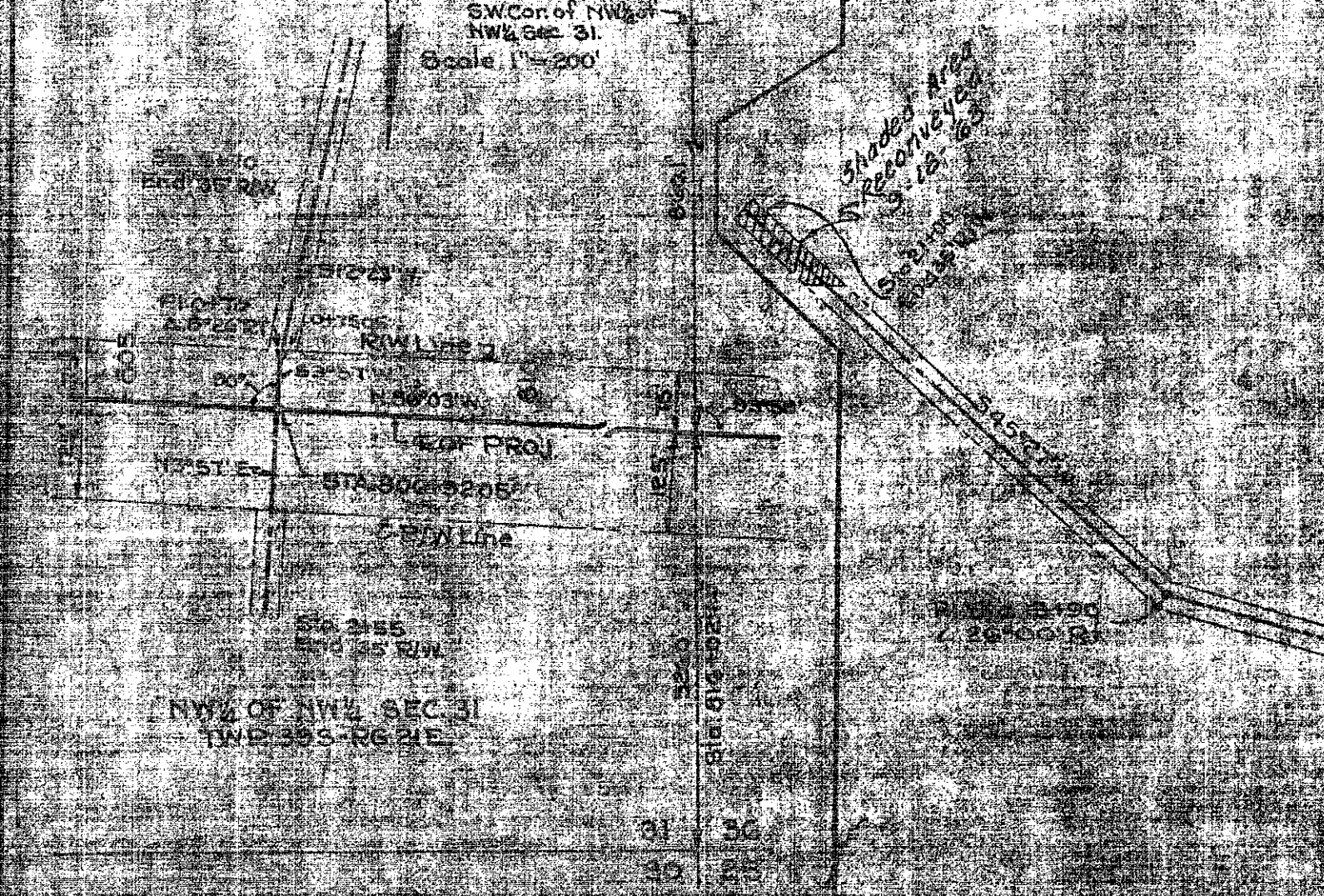
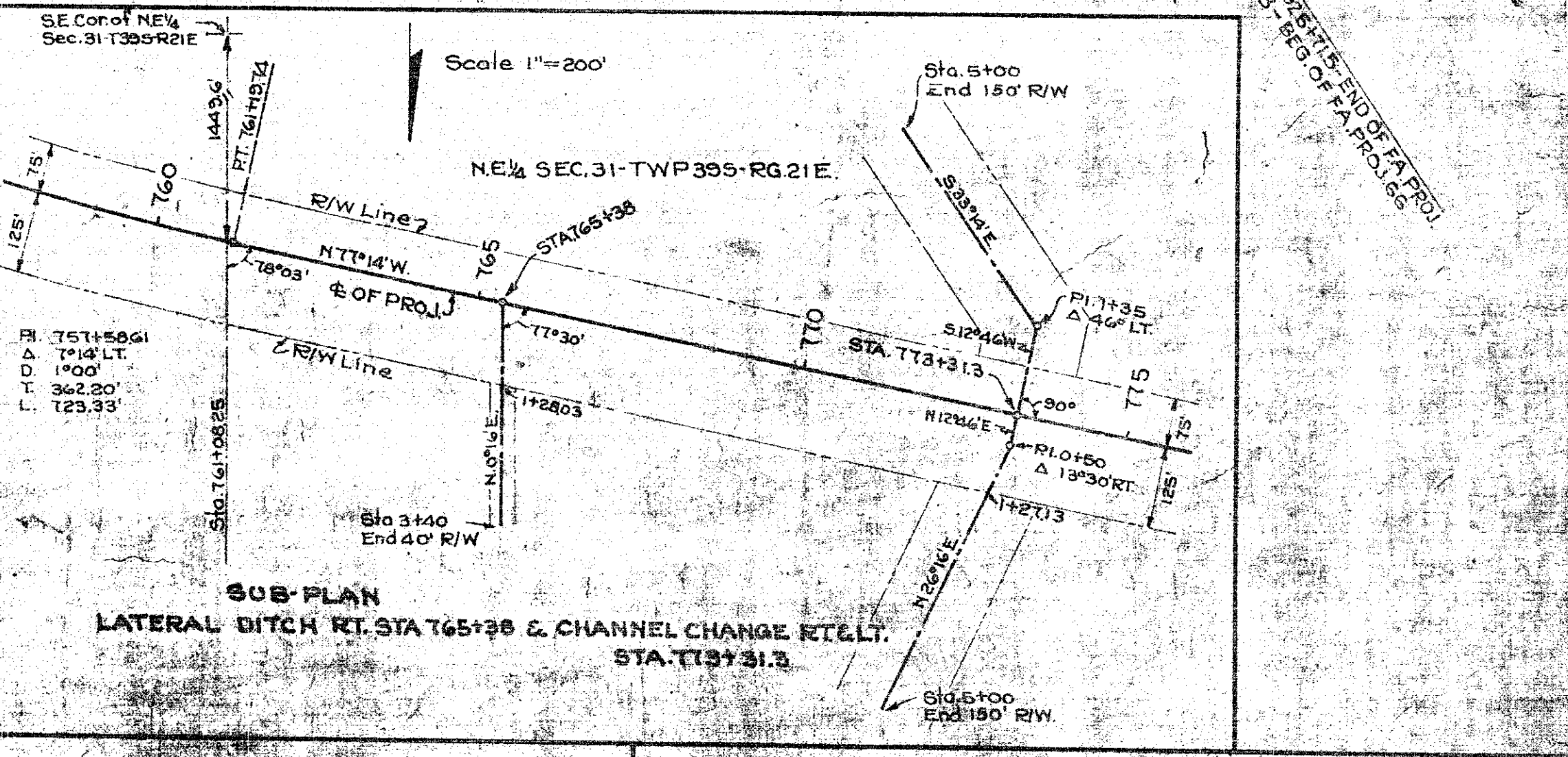
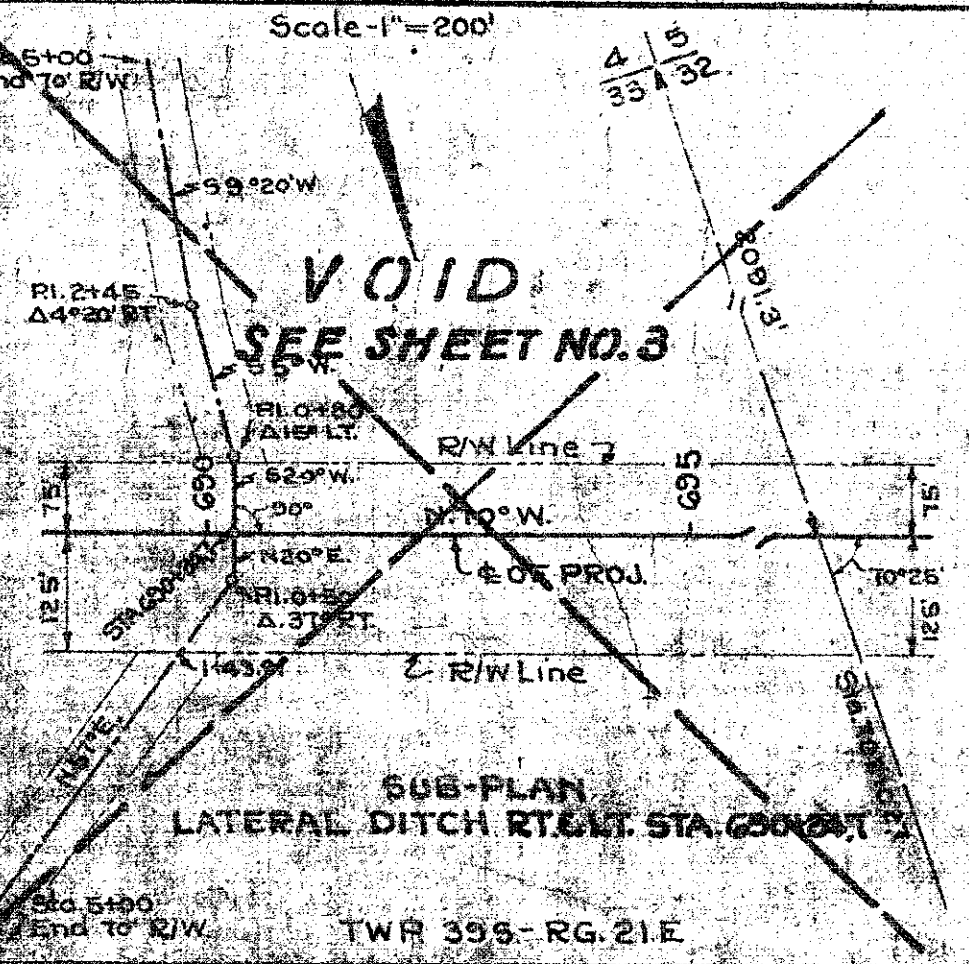
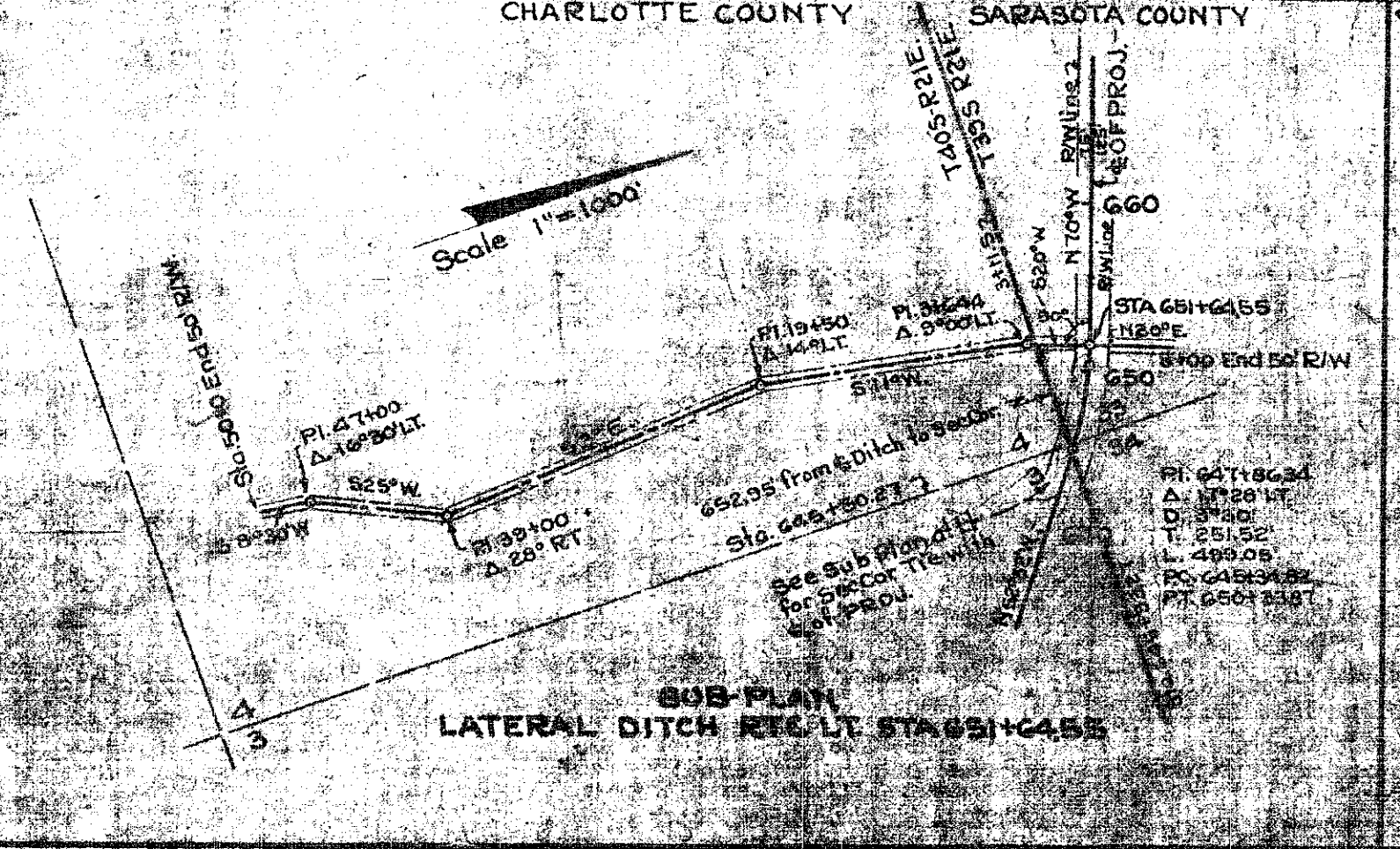
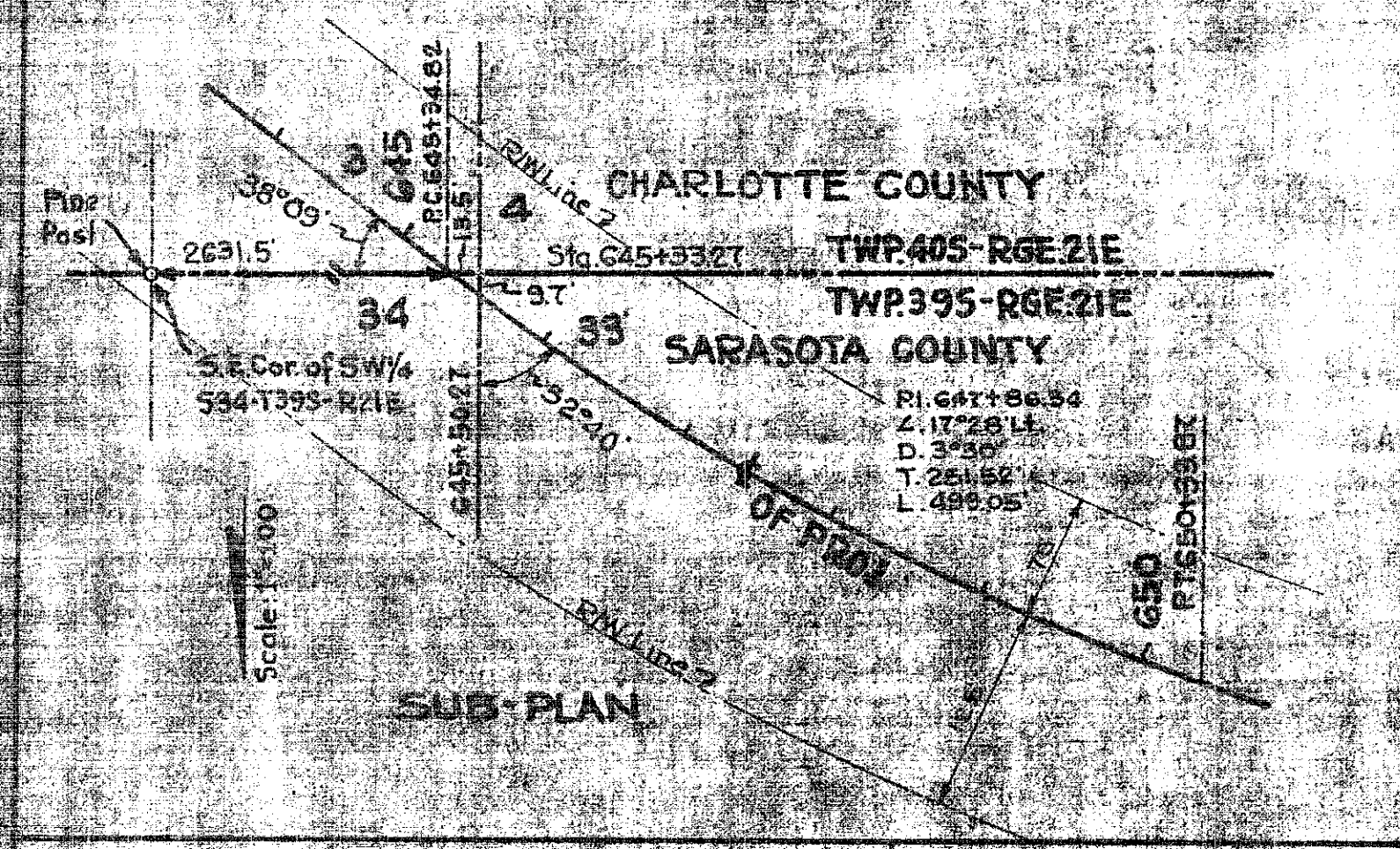
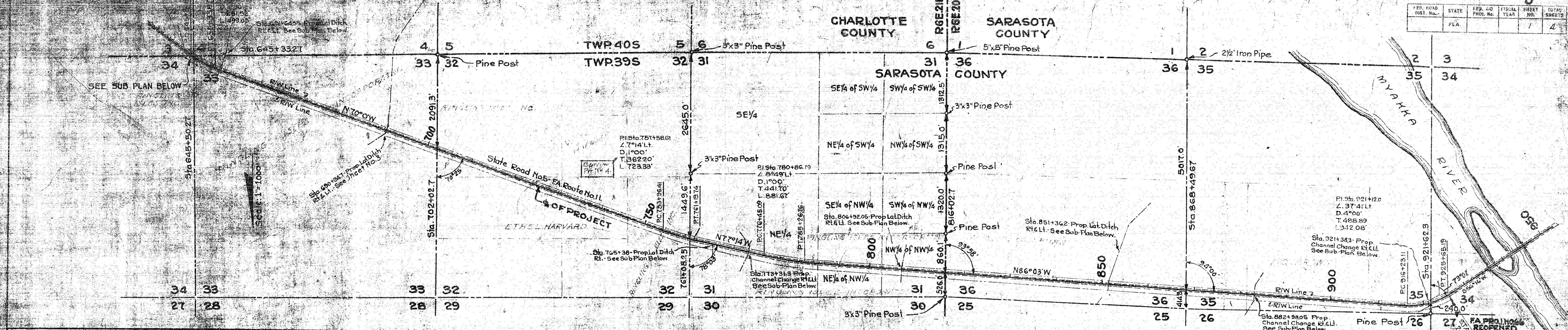


FED. ROAD DIST. NO.	STATE	FED. AID PROJ. NO.	FISCAL YEAR	SHEET NO.	TOTAL SHEETS
	FLA.			7	4

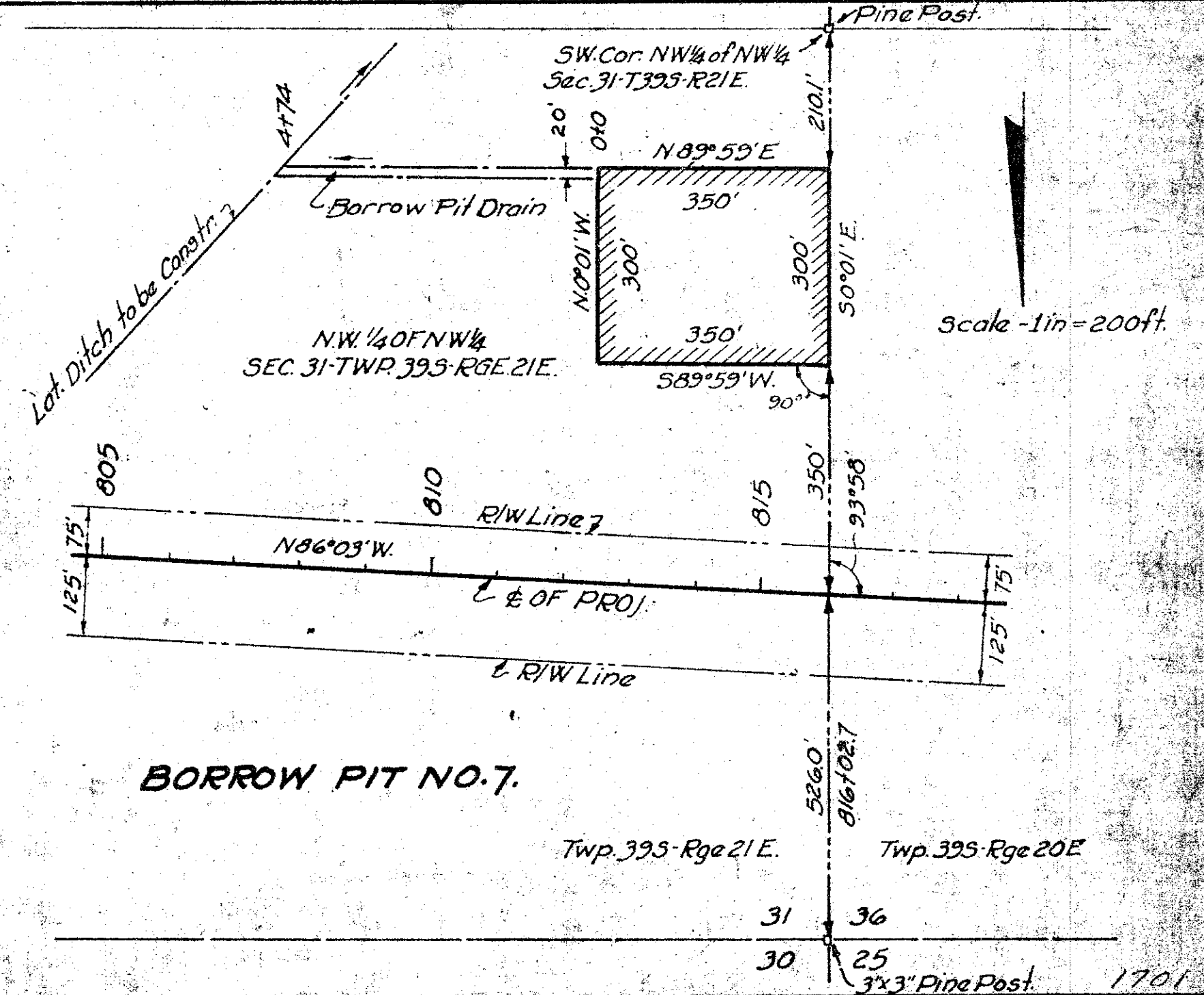
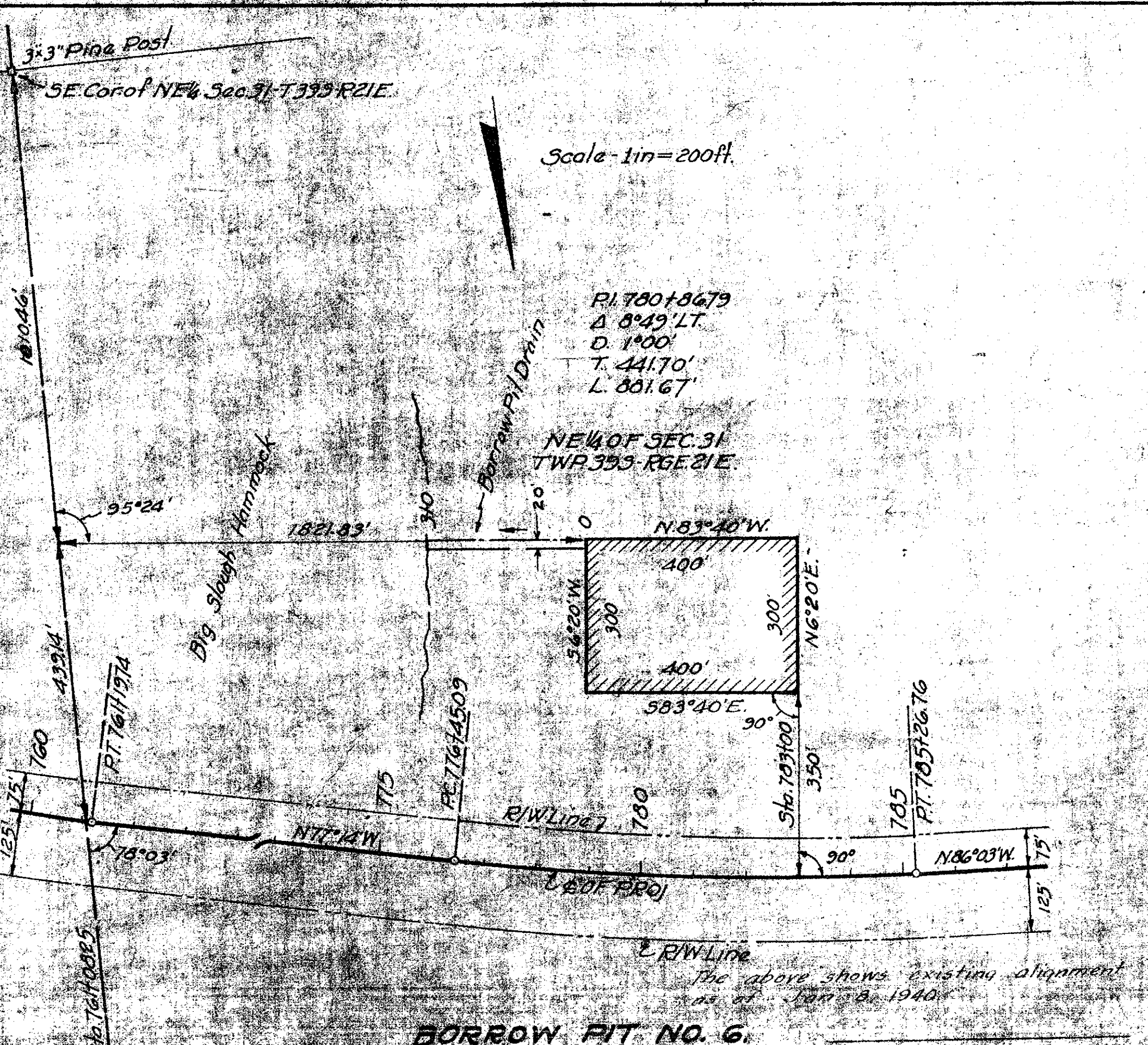
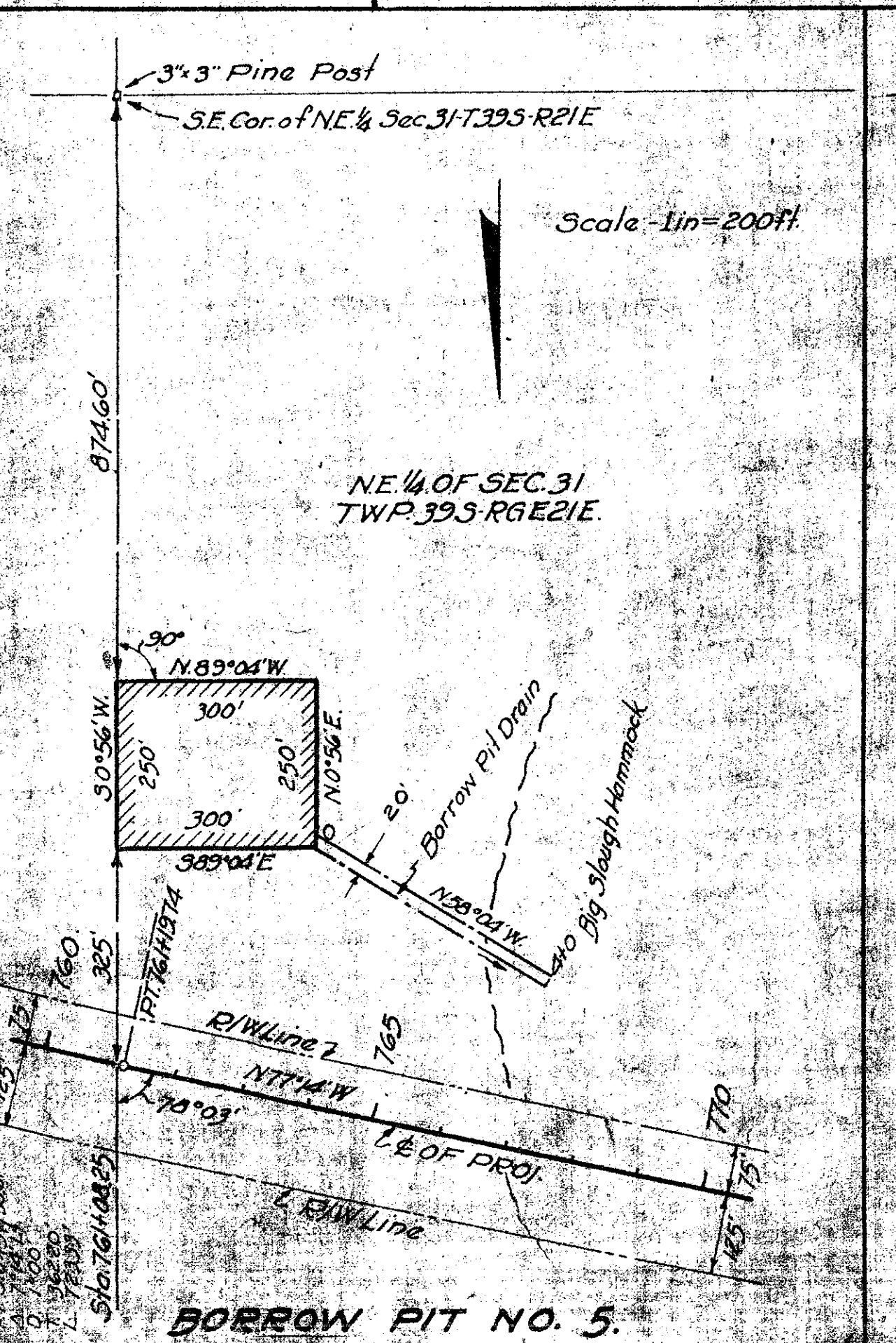
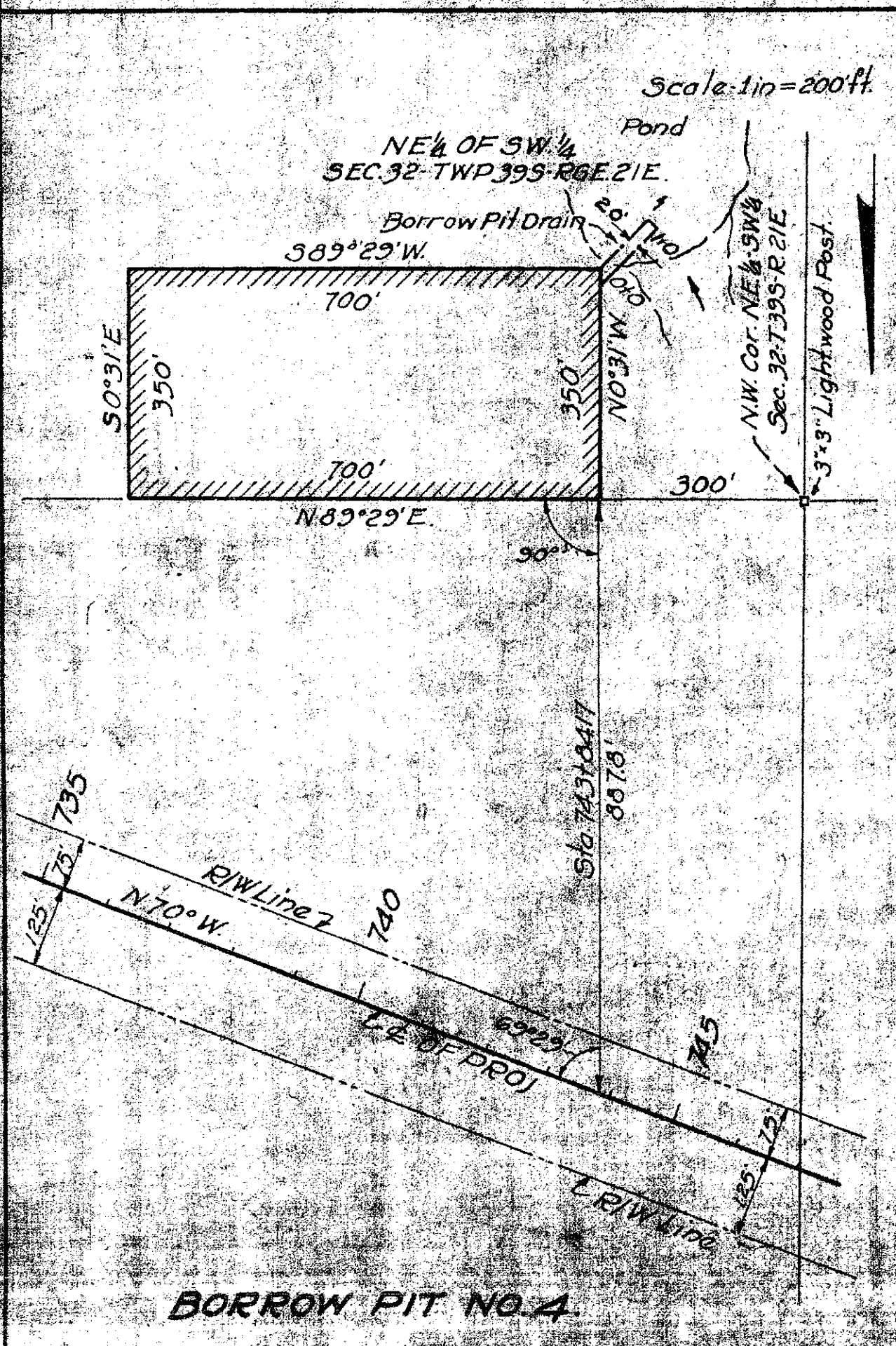
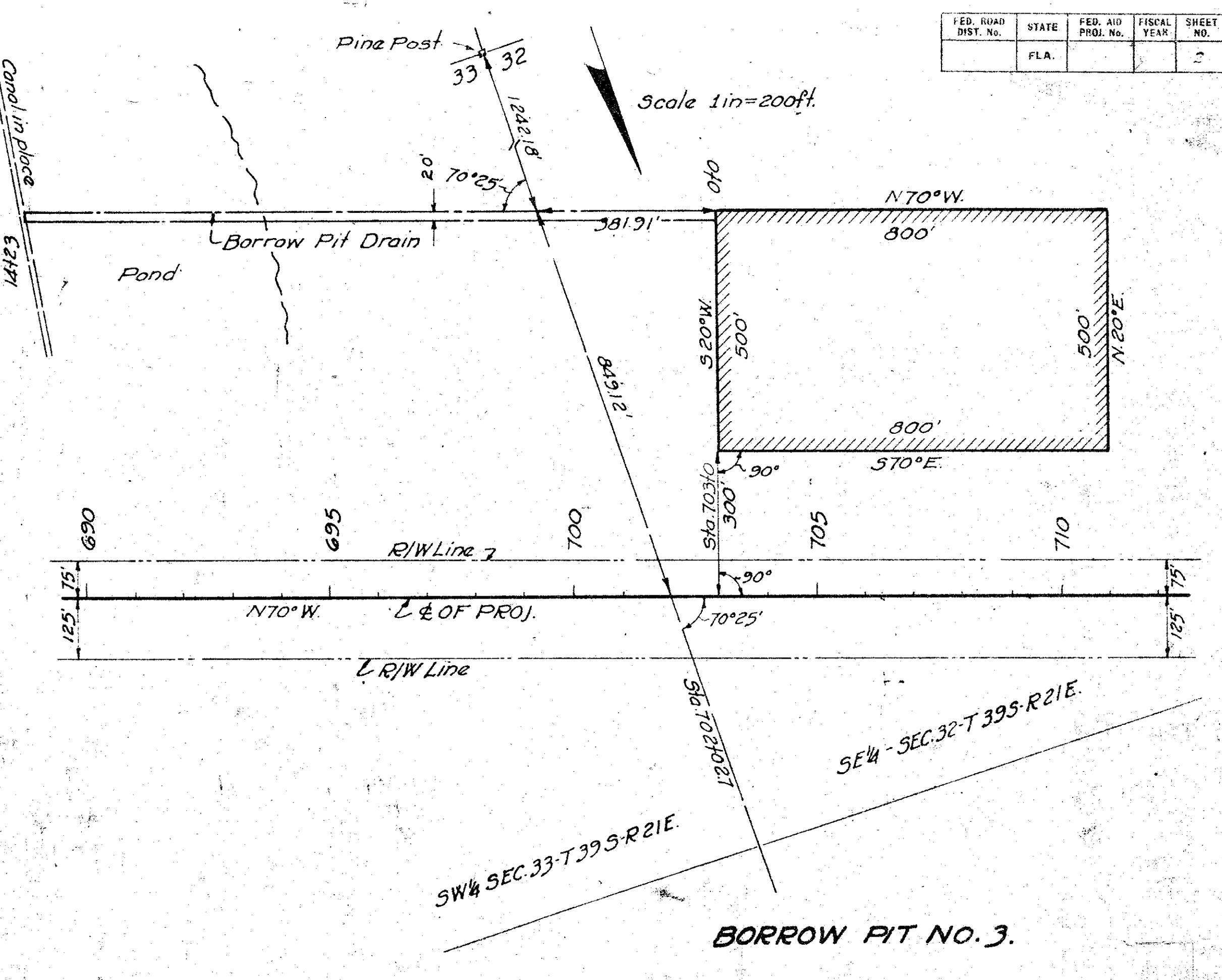
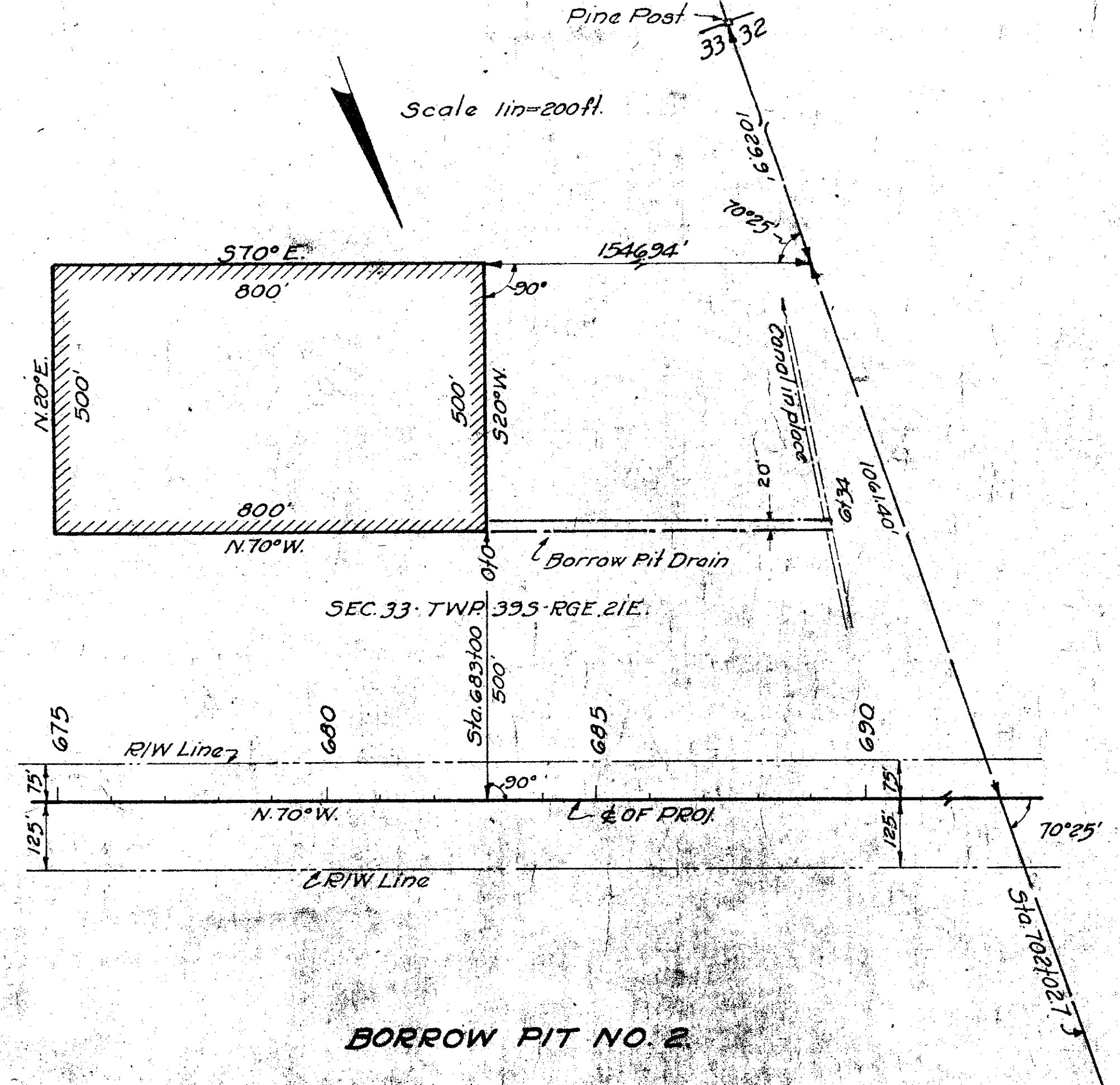
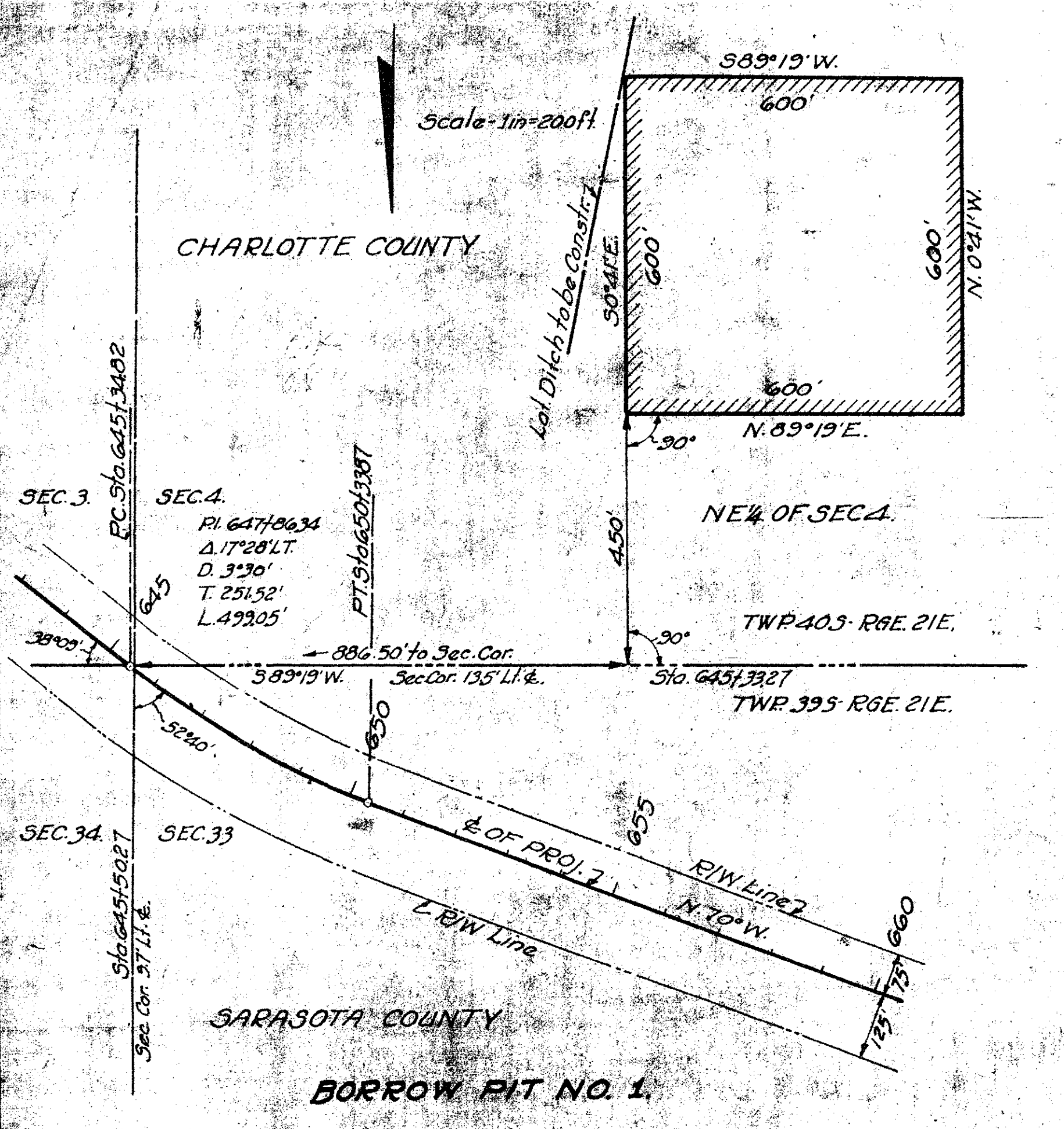


R/W WIDTH REQUIRED
 STA. 643+84.82 TO STA. 625+71.5
 75' LT. OF & OF PROJ. 125' RT. OF & OF PROJ.

NOTE:
 All Angles from Curves formed from Tangent to Curve
 The chain stans existing alignment as of Jan. 3, 1940.

STATE OF FLORIDA
 STATE ROAD DEPARTMENT
RIGHT OF WAY MAP
 P.A. PROJ. 243 - SARASOTA CO.

FED. ROAD DIST. No.	STATE	FED. AID PROJ. No.	FISCAL YEAR	SHEET NO.	TOTAL SHEETS
	FLA.			2	4



Note
All Angles from Curves are returned from Tang. to Curve

Map Completed: Aug. 15, 1957

Approved by

STATE OF FLORIDA
STATE ROAD DEPARTMENT
RIGHT OF WAY MAP
FA PROJ. 243 SARASOTA COUNTY

Names	Dates	Approved by
Designed		
Drawn	8-8-57	
Traced		
Checked		
Retyped	10-29-57	

The above shows existing alignment as of Jan. 20, 1940.

Div. Engr. of E.W.

