

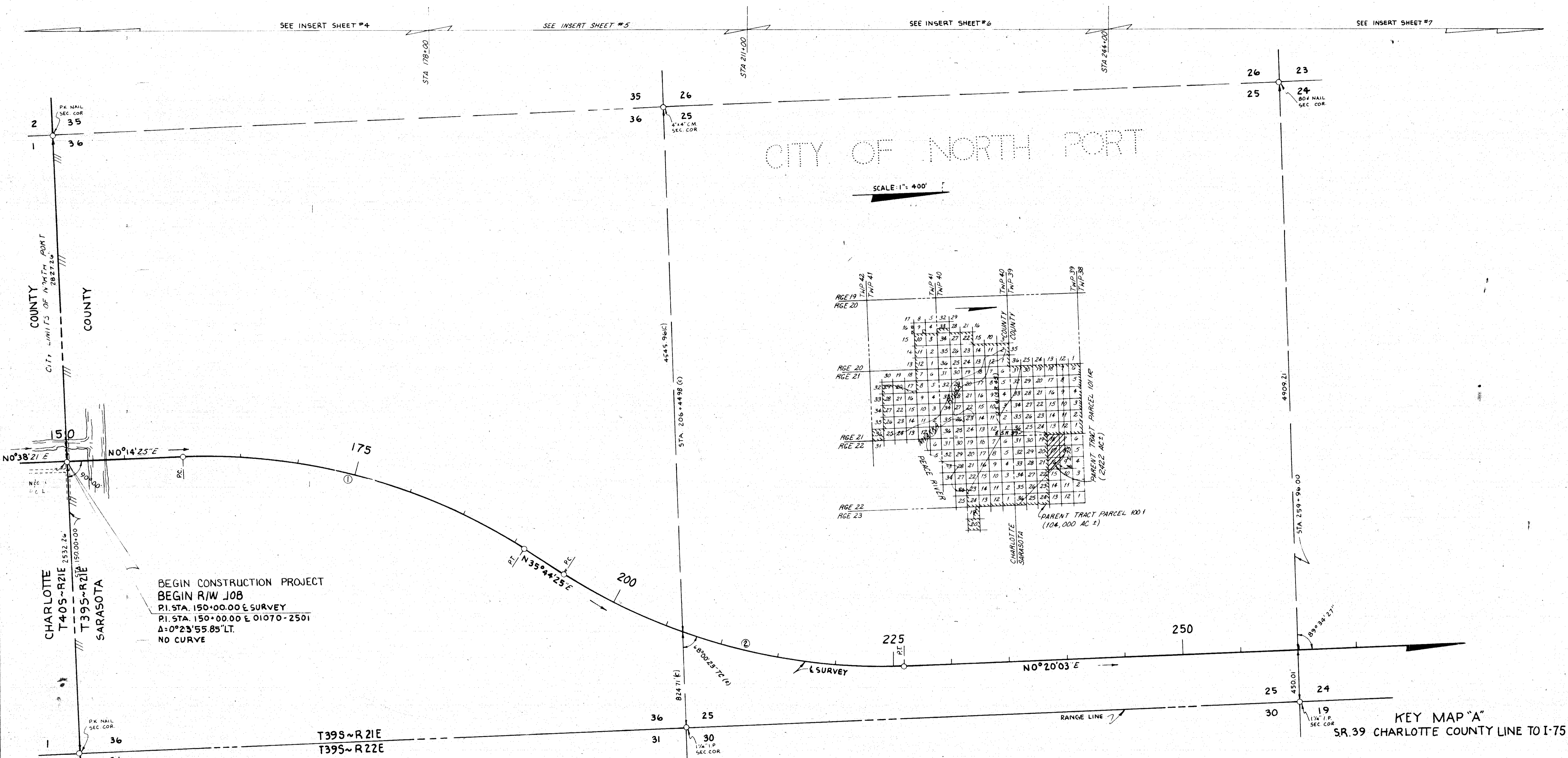
FED. ROAD DIV. NO.	STATE	F A PROJECT NO.	FISCAL YEAR	SHEET NO.
3	FLA.	R3-1699-(1)		1

SEE INSERT SHEET #4

SEE INSERT SHEET #5

SEE INSERT SHEET #6

SEE INSERT SHEET #7



CITY OF NORTH PORT

SCALE: 1" = 400'

BEGIN CONSTRUCTION PROJECT  
 BEGIN R/W JOB  
 P.I. STA. 150+00.00 E SURVEY  
 P.I. STA. 150+00.00 E 01070-2501  
 Δ=0°23'55.85"LT.  
 NO CURVE

P.I. STA. 150+00.00  
 Δ=0°23'55.85"LT.  
 (NO CURVE)

①  
 CURVE DATA  
 P.I. STA. 176+01.91  
 Δ=35°30'00"  
 D=1°08'45"  
 T=1600.52  
 L=3097.97  
 R=5000.00'  
 P.C. STA. 160+01.39  
 P.T. STA. 190+99.36

②  
 CURVE DATA  
 P.I. STA. 211+00.29  
 Δ=35°24'22"  
 D=1°08'45"  
 T=1596.00  
 L=3089.77  
 R=5000.00'  
 P.C. STA. 195+04.29  
 P.T. STA. 225+94.06

"This right of way map when recorded is an instrument of conveyance, transferring in accordance with Florida Statutes 337.29 (1977) all right, title and interest of the Florida Department of Transportation in the road, street, highway, set forth on this map to Sarasota County."

Recorded in Public Records of Sarasota County, Florida, this 19<sup>TH</sup> day of MARCH A.D. 1991 in Road Plat Book 3, page 37-32K

*Landrich B. Healy, Deputy Clerk*  
 For: *Thomas C. Lewis*  
 Clerk of the Circuit Court  
 Sarasota County, Florida

KEY MAP "A"  
 SR. 39 CHARLOTTE COUNTY LINE TO I-75

TOLEDO BLADE BLVD.

TOPOG TAKEN FROM F&B 87-759 TIES FROM F&B 885482  
 (C) INDICATES CALCULATED INFORMATION

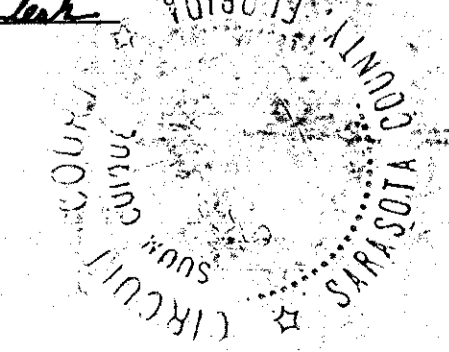
STATE OF FLORIDA  
 DEPARTMENT OF TRANSPORTATION  
**RIGHT OF WAY MAP**

STATE ROAD NO. 39 SARASOTA COUNTY

BY	DATE	APPROVED BY	DATE
DRAWN J. R. M.	4-23-71		
TRACED A. J. D.	4-28-71		
CHECKED R. CANNON	5-14-71	<i>Thomas C. Lewis</i>	DISTRICT ENGINEER
COMPARED			ENGINEER OF RIGHT OF WAY
INDEXED			STATE HIGHWAY ENGINEER

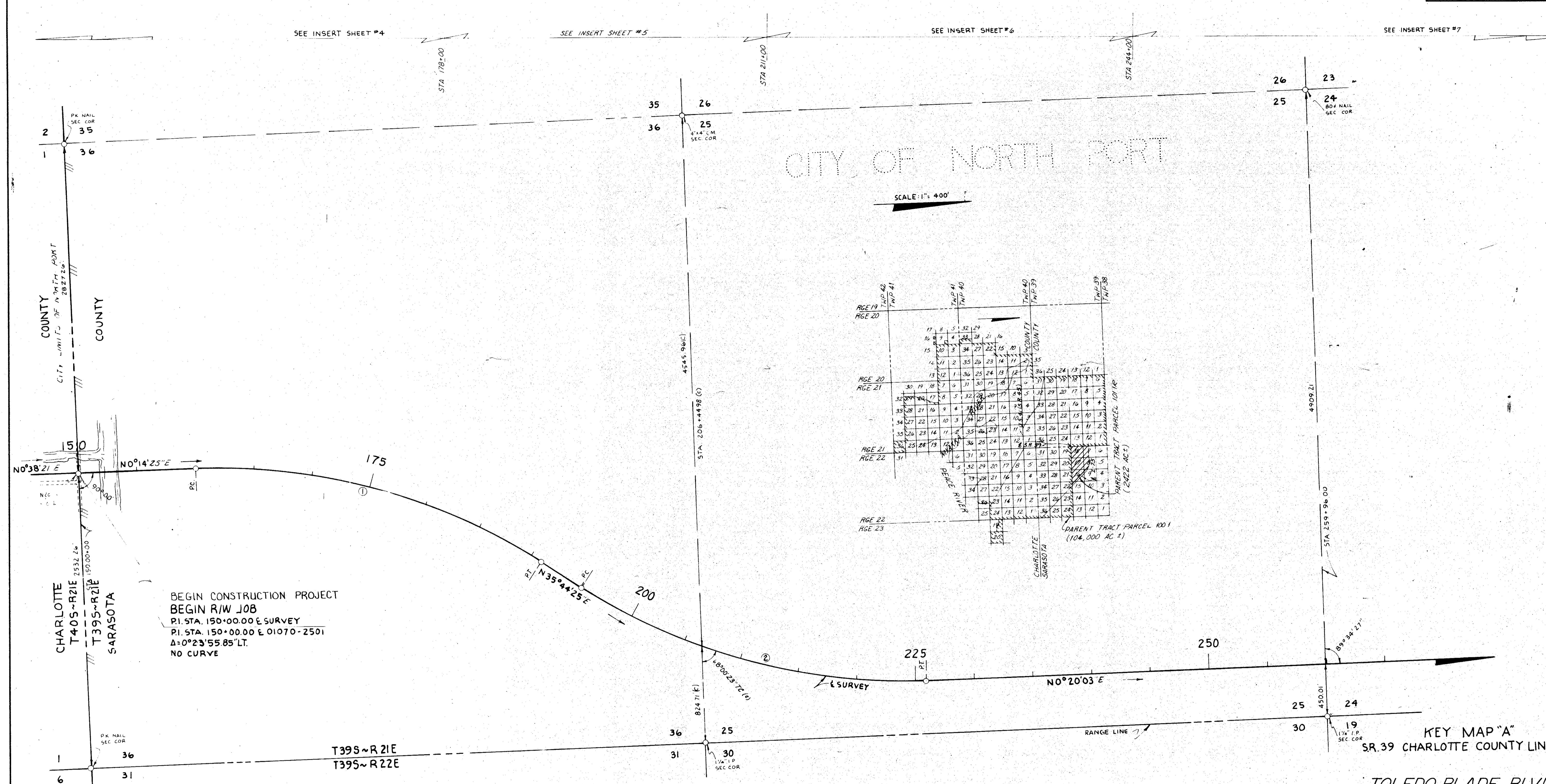
SECTION 17160-(2502) 2503 SHEET 1 OF 12

B. I. 119/29



FED. ROAD DIV. NO.	STATE	F. A. PROJECT NO.	FISCAL YEAR	SHEET NO.
3	FLA.	RS-1699-11		1

SEE INSERT SHEET #4      SEE INSERT SHEET #5      SEE INSERT SHEET #6      SEE INSERT SHEET #7



BEGIN CONSTRUCTION PROJECT  
 BEGIN R/W JOB  
 P.I. STA. 150+00.00 E SURVEY  
 P.I. STA. 150+00.00 E 01070-2501  
 $\Delta = 0^{\circ}23'55.85''$  LT.  
 NO CURVE

PI STA. 150+00.00  
 $\Delta = 0^{\circ}23'55.85''$  LT.  
 (NO CURVE)

①  
 CURVE DATA  
 P.I. STA. 176+01.91  
 $\Delta = 35^{\circ}30'00''$   
 D = 1'08.45  
 T = 1600.52  
 L = 3097.97  
 R = 5000.00  
 P.C. STA. 160+01.39  
 P.T. STA. 190+99.36

②  
 CURVE DATA  
 P.I. STA. 211+00.29  
 $\Delta = 35^{\circ}24'22''$   
 D = 1'08.45  
 T = 1596.00  
 L = 3089.77  
 R = 5000.00  
 P.C. STA. 195+04.29  
 P.T. STA. 225+94.06

"This right of way map when recorded is an instrument of conveyance, transferring in accordance with Florida Statutes 337.29(1977) all right, title and interest of the Florida Department of Transportation in the road, street, highway, set forth on this map to Sarasota County."  
 Recorded in Public Records of Sarasota County, Florida, this 19<sup>TH</sup> day of MARCH A.D. 1991 in Road Plat Book 9, page 37-37K  
 For: *Ludwig B. Hoops, Deputy Clerk*  
 Clerk of the Circuit Court  
 Sarasota County, Florida

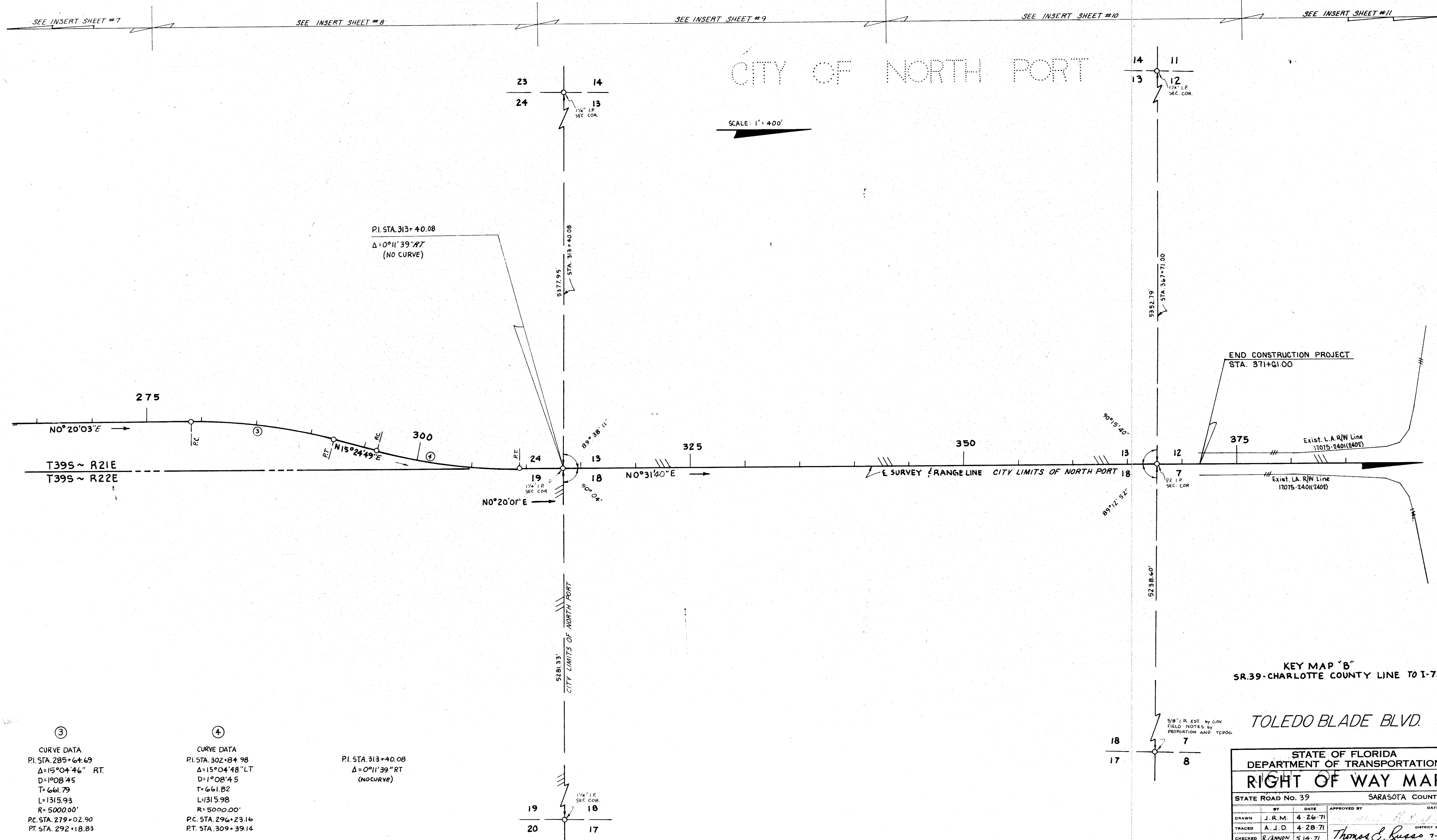
KEY MAP "A"  
 SR. 39 CHARLOTTE COUNTY LINE TO I-75

TOLEDO BLADE BLVD.

TOPOG. TAKEN FROM F.S. 87-759, TIES FROM F.S. 885-482  
 (C) INDICATES CALCULATED INFORMATION

STATE OF FLORIDA	
DEPARTMENT OF TRANSPORTATION	
RIGHT OF WAY MAP	
STATE ROAD NO. 39	SARASOTA COUNTY
BY DATE	APPROVED BY DATE
DRAWN J.R.M. 4-23-71	
TRACED A.J.D. 4-28-71	
CHECKED R. CANNON 5-14-71	<i>Thomas S. Linder</i>
COMPADED	ENGINEER OF RIGHT OF WAY
INDEXED	STATE HIGHWAY ENGINEER
SECTION 17160-(2502) 2503	SHEET 1 OF 12
B. I. 119/29	

FED. ROAD DIV. NO.	STATE	F. A. PROJECT NO.	FISCAL YEAR	SHEET NO.
3	FLA.	RS-1699-(1)		2



CITY OF NORTH PORT

SCALE: 1" = 400'

PI. STA. 313+40.08  
 $\Delta = 0^\circ 11' 39'' RT$   
 (NO CURVE)

END CONSTRUCTION PROJECT  
 STA. 371+61.00

KEY MAP "B"  
 SR.39-CHARLOTTE COUNTY LINE TO I-75

TOLEDO BLADE BLVD.

③  
 CURVE DATA  
 PI. STA. 285+64.69  
 $\Delta = 15^\circ 04' 46'' RT$   
 D = 1908.45  
 T = 661.79  
 L = 1315.93  
 R = 5000.00'  
 P.C. STA. 279+02.90  
 P.T. STA. 292+18.83

④  
 CURVE DATA  
 PI. STA. 302+84.98  
 $\Delta = 15^\circ 04' 48'' LT$   
 D = 1908.45  
 T = 661.82  
 L = 1315.98  
 R = 5000.00'  
 P.C. STA. 296+23.16  
 P.T. STA. 309+39.14

PI. STA. 313+40.08  
 $\Delta = 0^\circ 11' 39'' RT$   
 (NO CURVE)

STATE OF FLORIDA DEPARTMENT OF TRANSPORTATION			
RIGHT OF WAY MAP			
STATE ROAD No. 39		SARASOTA COUNTY	
BY	DATE	APPROVED BY	DATE
DRAWN J. R. M.	4-26-71	<i>[Signature]</i>	
TRACED A. J. D.	4-28-71		
CHECKED R. ANNON	5-14-71	<i>Thomas C. Russo</i>	7-7-71 DISTRICT ENGINEER
COMPARED			ENGINEER OF RIGHT OF WAY

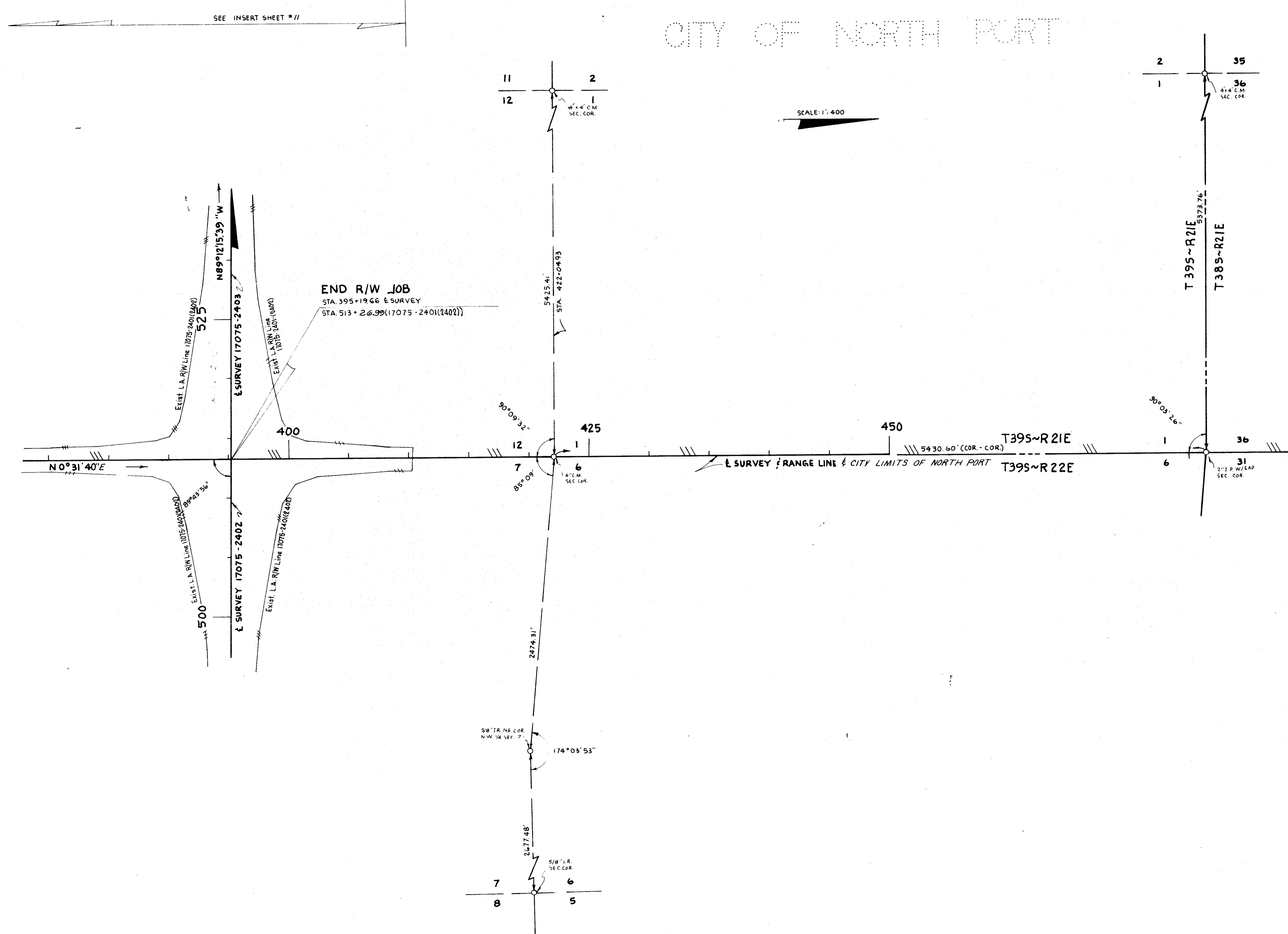
REVISION	BY	DATE
Add I-75 R/W	JWO	4-12-79
Job # 181	TJW-RPH	3-21-79

SECTION 17160-(2502) 2503 SHEET 2 OF 12

B.I. 1/9/29

RD. ROAD DIV. No.	STATE	F. A. PROJECT NO.	FISCAL YEAR	SHEET No.
3	FLA.	RS-1699-(1)		3

CITY OF NORTH PORT



KEY MAP "C"  
 SR. 39-CHARLOTTE COUNTY LINE TO I-75  
 TOLEDO BLADE BLVD.

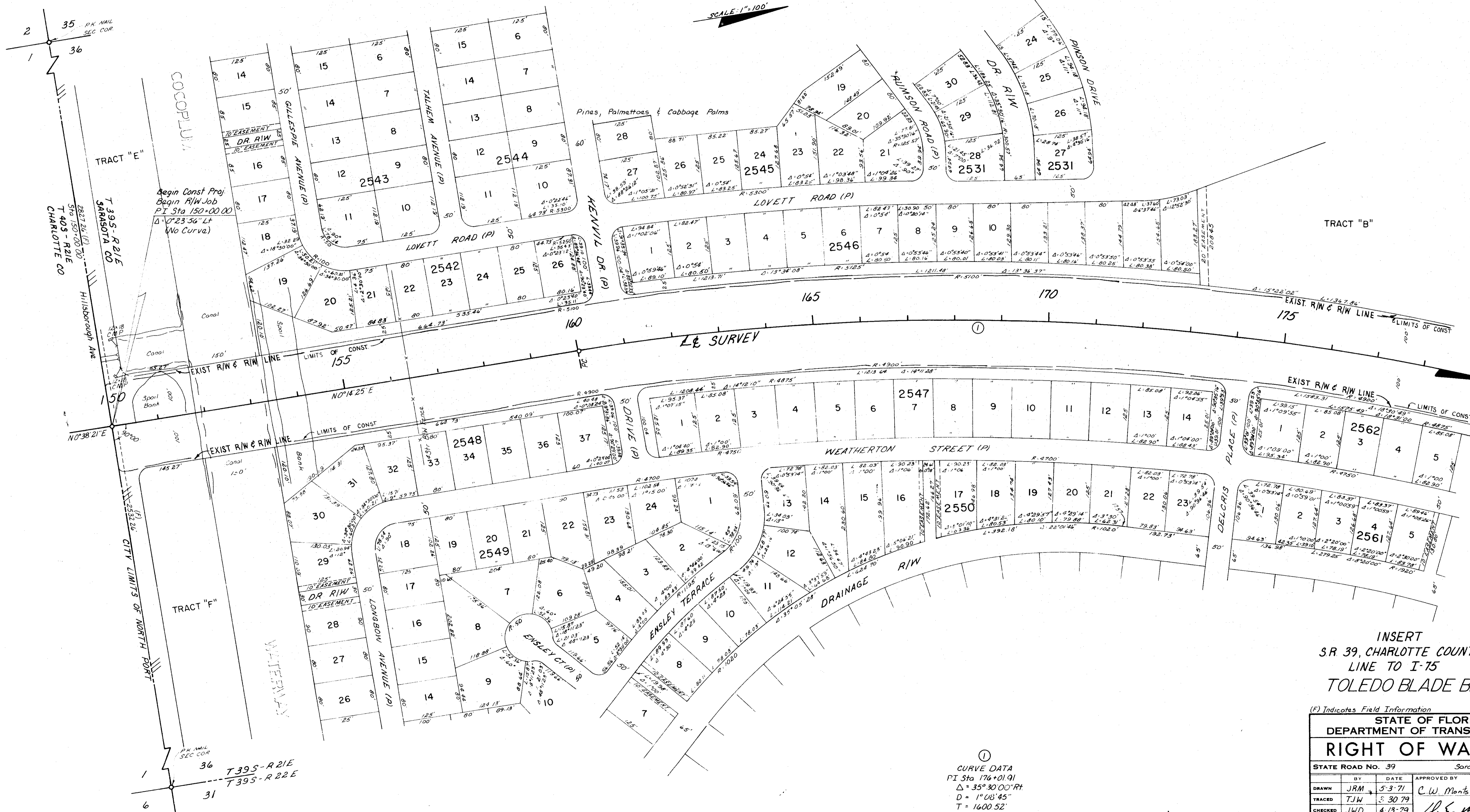
STATE OF FLORIDA DEPARTMENT OF TRANSPORTATION			
RIGHT OF WAY MAP			
STATE ROAD NO. 39		SARASOTA COUNTY	
BY	DATE	APPROVED BY	DATE
DRAWN J. R. M.	4-26-71	<i>Thomas C. Lewis</i>	7-7-71
TRACED A. J. D.	4-29-71		
CHECKED R. CANNON	5-14-71		
ADD I-75 R/W	JWD	4-12-79	COMPARED
2nd Job # B.I. No	TJM-RPH	3-21-79	INDEXED
EQUATION	WMO-THK	6-2-72	
REVISION	BY	DATE	

FED. ROAD DIV. NO.	STATE	F A PROJECT NO.	FISCAL YEAR	SHEET NO.
3	FLA.	RS-1699-(1)		4

FIFTY-FIRST ADDITION TO  
PORT CHARLOTTE SUBDIVISION  
Filed on Nov. 14<sup>th</sup> 1971 in Plot Book 21, Pages 8 thru 866  
Public records of Sarasota County, Fla.

CITY OF NORTH PORT

SCALE 1"=100'



Begin Const Proj.  
Begin R/W Job  
PI Sta 150+00.00  
 $\Delta = 0^\circ 23' 56''$  Lt  
(No Curve)

TRACT "E"  
T 395-R 21E  
SARASOTA CO  
T 403-R 21E  
CHARLOTTE CO  
2827 26' 1/2" 70'  
510' 150' 00" 70'  
HISBOROUGH AVE

TRACT "F"  
CITY LIMITS OF NORTH PORT  
WATERWAY

PK NAIL  
SEC COR  
36  
T 395-R 21E  
T 395-R 22E  
31

①  
CURVE DATA  
PI Sta 176+01.91  
 $\Delta = 35^\circ 30' 00''$  Rt  
D = 1° 08' 45"  
T = 1600.52'  
L = 3097.97'  
R = 5000.00'  
PC Sta 160+01.39  
PT Sta 190+99.36

INSERT  
S.R. 39, CHARLOTTE COUNTY  
LINE TO I-75  
TOLEDO BLADE BLVD.

(F) Indicates Field Information

STATE OF FLORIDA DEPARTMENT OF TRANSPORTATION RIGHT OF WAY MAP			
STATE ROAD NO. 39	Sarasota COUNTY		
BY	DATE	APPROVED BY	DATE
DRAWN	JRM 5-3-71	C.W. Monts De Oca	5-3-71
TRACED	TJW 5-30-79		
CHECKED	JWD 4-13-79		
COMPARED	JWD 1-30-80		
INDEXED			
SECTION 17160-(2502) 2503		SHEET 4 OF 12	

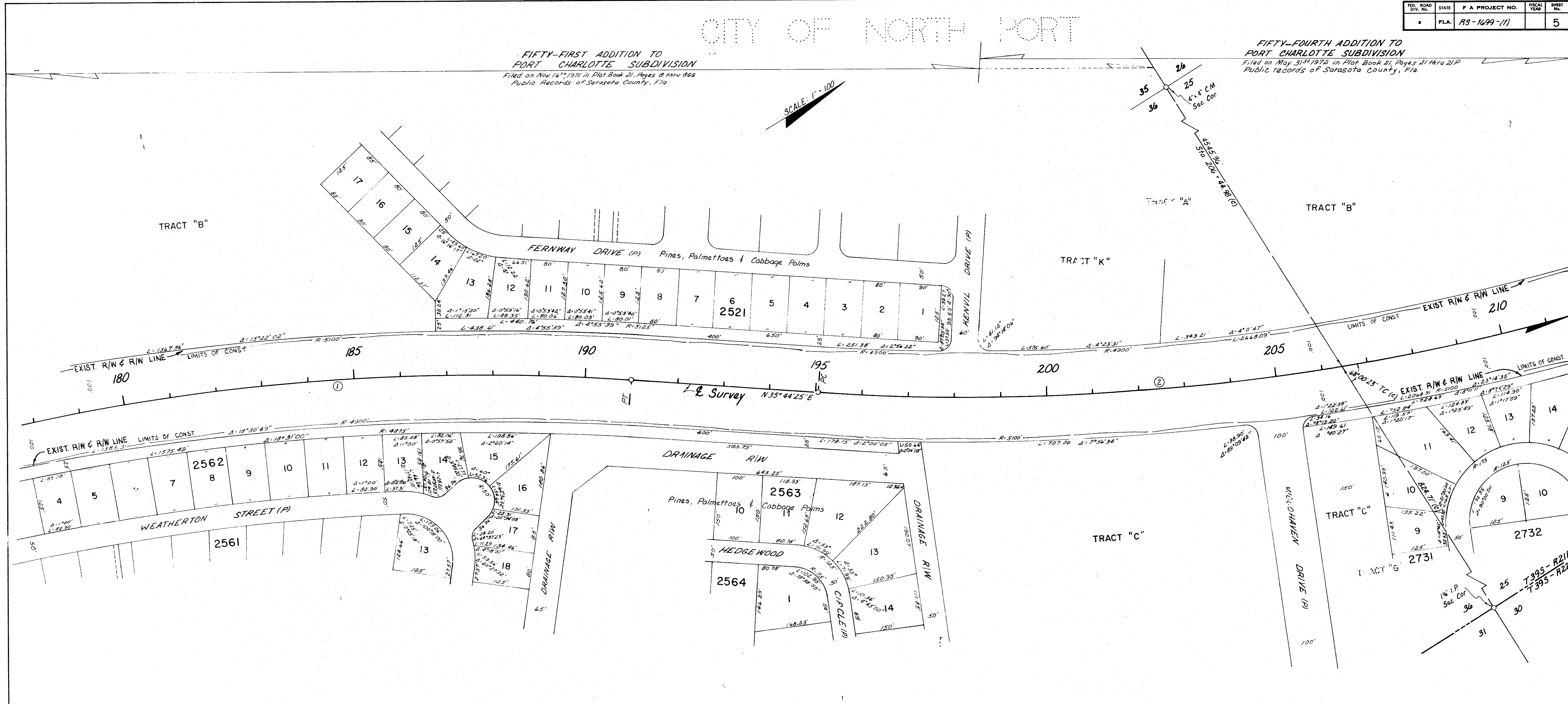
FED. ROAD DIV. NO.	STATE	F. A. PROJECT NO.	FISCAL YEAR	SHEET NO.
3	FLA.	RS-1699-11		5

CITY OF NORTH PORT

FIFTY-FIRST ADDITION TO  
PORT CHARLOTTE SUBDIVISION  
Filed on Nov. 16<sup>th</sup>, 1971 in Plat Book 21, Pages 8 thru 866  
Public Records of Sarasota County, Fla.

FIFTY-FOURTH ADDITION TO  
PORT CHARLOTTE SUBDIVISION  
Filed on May 31<sup>st</sup>, 1978 in Plat Book 21, Pages 21 thru 21P  
Public Records of Sarasota County, Fla.

SCALE: 1" = 100'



①  
CURVE DATA  
PI Sta 176+01.91  
Δ = 35° 30' 00" RT  
D = 1° 08' 45"  
T = 1600.52  
L = 3097.97  
R = 5000.00  
PC Sta 160+01.59  
PT Sta 190+99.36

②  
CURVE DATA  
PI Sta 211+00.29  
Δ = 35° 24' 22" L  
D = 1° 08' 45"  
T = 1596.00  
L = 3089.77  
R = 5000.00  
PC Sta 195+01.29  
PT Sta 225+94.06

TOLEDO BLADE BLVD.

INSERT  
S.R. 39, CHARLOTTE COUNTY  
LINE TO I-75

(F) Indicates Field Information  
(C) Indicates Calculated Information

STATE OF FLORIDA DEPARTMENT OF TRANSPORTATION			
RIGHT OF WAY MAP			
STATE ROAD No. 39		Sarasota COUNTY	
BY	DATE	APPROVED BY	DATE
DRAWN JRM	5-5-71	C. W. Monte De Coo DISTRICT ENGINEER	1-16-80
TRACED TJW	4-2-79		
CHECKED JWD	4-13-79	ENGINEER OF RIGHT OF WAY	
COMPARED JWD	1-3-80		
INDEXED			

REVISION	BY	DATE

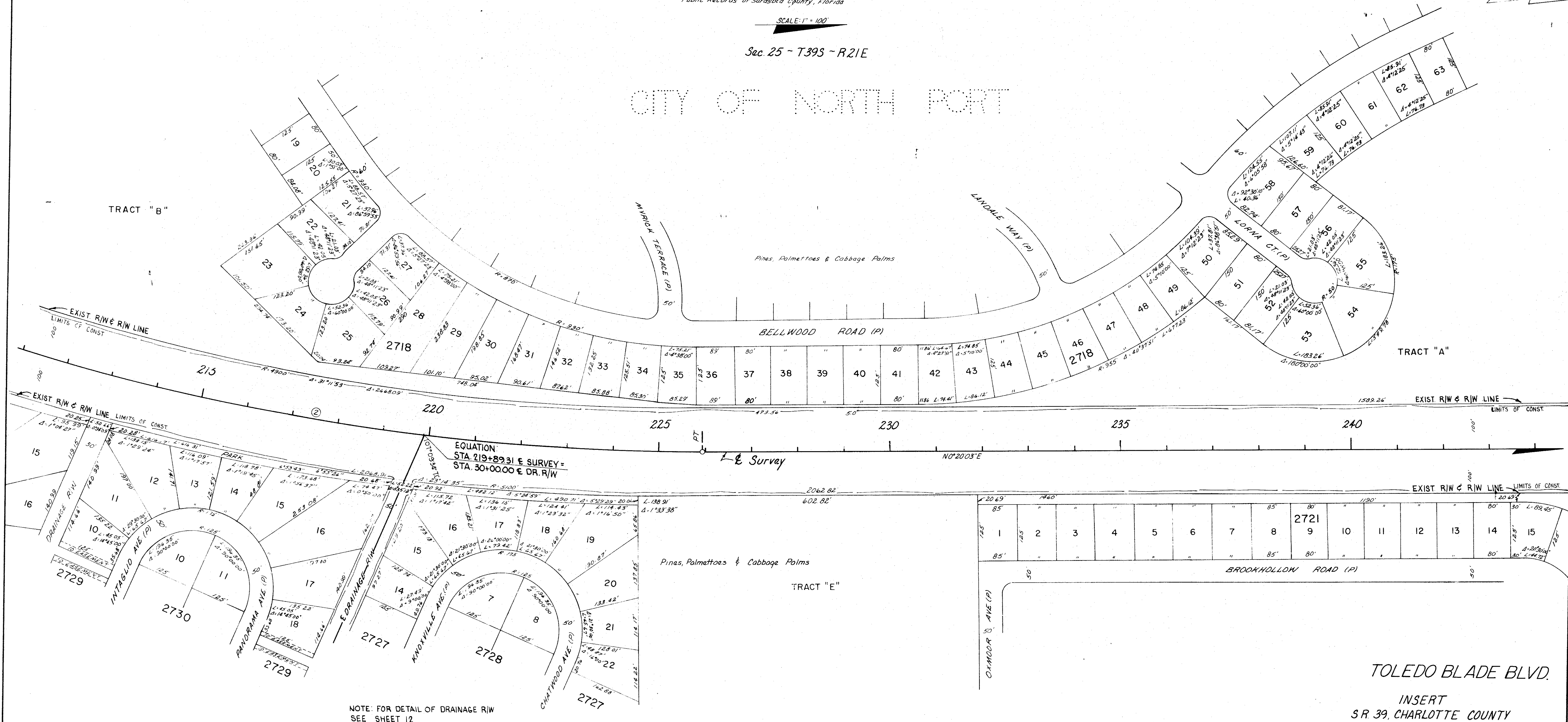
FED. ROAD DIV. NO.	STATE	F A PROJECT NO.	FISCAL YEAR	SHEET NO.
3	FLA.	RS-1699-(1)		6

FIFTY-FOURTH ADDITION TO  
PORT CHARLOTTE SUBDIVISION  
Filed on May 31<sup>st</sup>, 1972 in Plat Book 21, Pages 21 thru 21P  
Public Records of Sarasota County, Florida

SCALE: 1" = 100'

Sec. 25 - T39S - R21E

CITY OF NORTH PORT



NOTE: FOR DETAIL OF DRAINAGE R/W  
SEE SHEET 12

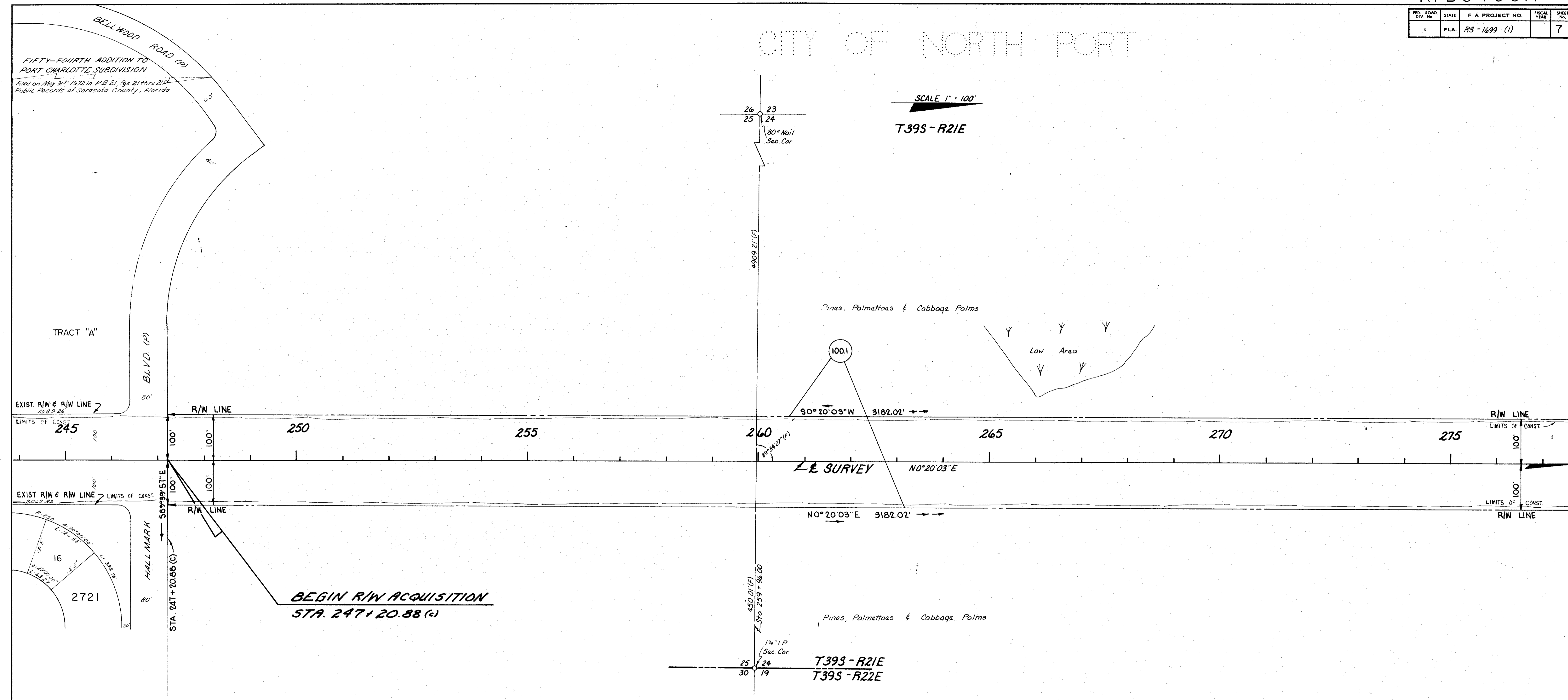
②  
CURVE DATA  
PI Sta 211+00.29  
Δ = 35° 24' 22" LT  
D = 1° 08' 45"  
T = 1596.00  
L = 3089.77  
R = 5000.00  
PC Sta 195+04.29  
PT Sta 225+94.06

(F) Indicates Field Information  
(C) Indicates Calculated Information

STATE OF FLORIDA DEPARTMENT OF TRANSPORTATION			
RIGHT OF WAY MAP			
STATE ROAD NO. 39		Sarasota COUNTY	
BY	DATE	APPROVED BY	DATE
DRAWN JRM	5-5-71	C. W. Monte De Cea	
TRACED JFW	4-3-79		
CHECKED JWD	4-13-79		
COMPARED JWD	1-3-80		
INDEXED			
REVISION	BY	DATE	
Removed Howard Park	K.R.W. dw	1-18-80	
SECTION 17160-(2502) 2503			SHEET 6 OF 12

FED. ROAD DIV. No.	STATE	F A PROJECT NO.	FISCAL YEAR	SHEET No.
3	FLA.	RS-1699-(1)		7

CITY OF NORTH PORT



TOLEDO BLADE BLVD.  
 INSERT  
 S.R. 39, CHARLOTTE COUNTY  
 LINE TO I-75

(F) Indicates Field Information

STATE OF FLORIDA DEPARTMENT OF TRANSPORTATION			
RIGHT OF WAY MAP			
STATE ROAD No. 39		SARASOTA COUNTY	
BY	DATE	APPROVED BY	DATE
DRAWN JRM	5-5-71	C.W. Monte De Oca	
TRACED TJW	4-3-79		
CHECKED JWD	4-13-79	H. C. ...	1-16-80
COMPARED JWD	1-3-80		
INDEXED			
SECTION 17160 - (2502) 2503 SHEET 7 OF 12			

REVISION	BY	DATE
Removed the word Park	K.R.W.	1-18-80

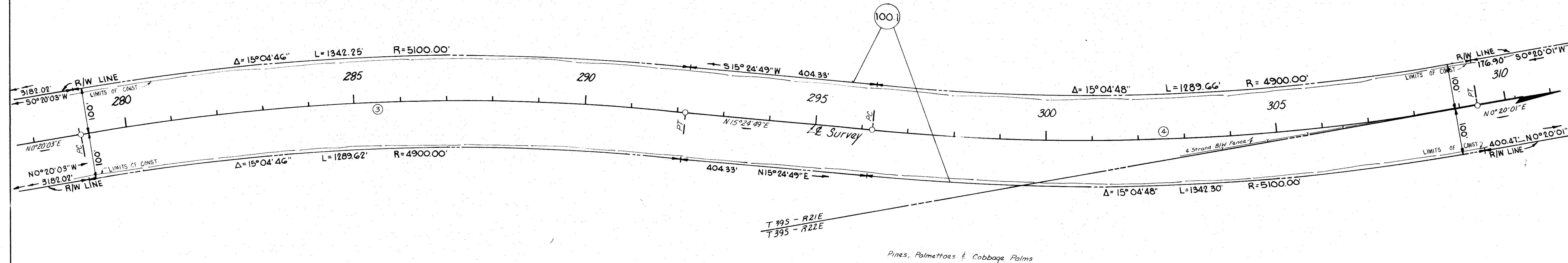
FED. ROAD DIV. NO.	STATE	F. A. PROJECT NO.	FISCAL YEAR	SHEET NO.
3	FLA.	RS-1699-(1)		8

SCALE: 1" = 100'

Sec. 24 - T 39S - R 21E

CITY OF NORTH PORT

Pines, Palmettos & Cabbage Palms



T 39S - R 21E  
T 39S - R 22E

Pines, Palmettos & Cabbage Palms

TOLEDO BLADE BLVD.

INSERT  
S.R. 39, CHARLOTTE COUNTY  
LINE TO I-75

③  
CURVE DATA  
PI Sta 285+64.69  
Δ = 15°04'46" RT  
D = 1°08'45"  
T = 661.79'  
L = 1315.93'  
R = 5000.00'  
PC Sta 279+02.90  
PT Sta 292+18.83

④  
CURVE DATA  
PI Sta 302+84.98  
Δ = 15°04'48" LT  
D = 1°08'45"  
T = 661.82'  
L = 1315.98'  
R = 5000.00'  
PC Sta 296+23.16  
PT Sta 309+39.14

(F) Indicates Field Information

STATE OF FLORIDA DEPARTMENT OF TRANSPORTATION RIGHT OF WAY MAP			
STATE ROAD NO. 39		Sarasota COUNTY	
BY	DATE	APPROVED BY	DATE
DRAWN J.R.M.	5-5-71	C.W. Monts De Oca	
TRACED T.J.W.	4-4-79	DISTRICT ENGINEER	
CHECKED J.W.D.	4-13-79	P.E. E. [Signature]	1-16-80
COMPARED J.W.D.	1-3-80	ENGINEER OF RIGHT OF WAY	
INDEXED		STATE HIGHWAY ENGINEER	

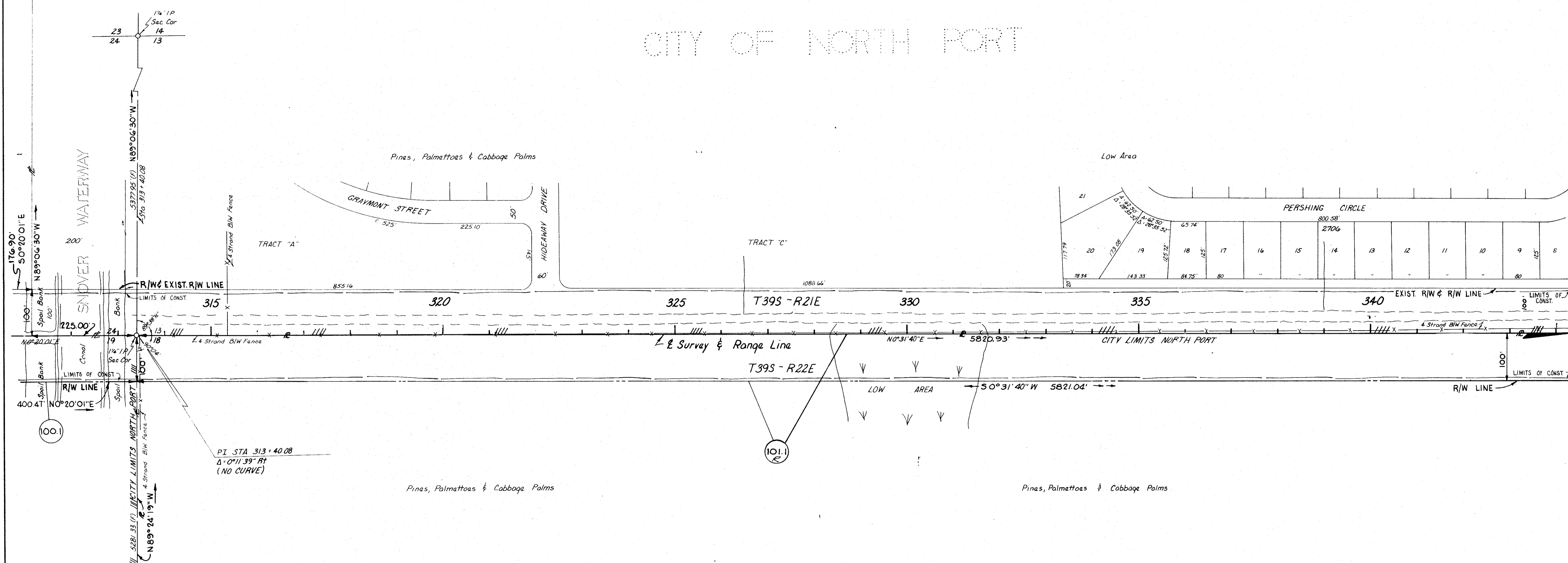
REVISION	BY	DATE
SECTION 17160 - (2502) 2503		
		SHEET 8 OF 12

FED. ROAD DIV. NO.	STATE	F. A. PROJECT NO.	FISCAL YEAR	SHEET NO.
3	FLA.	PS-1699-(1)		9

SCALE 1" = 100'

FIFTY-THIRD ADDITION TO  
PORT CHARLOTTE SUBDIVISION  
Filed On February 15TH, 1972 Plat Book 21, Pages 14 thru 14F  
Public Records Sarasota County, Florida

CITY OF NORTH PORT



TOLEDO BLADE BLVD.  
INSERT  
S.R. 39, CHARLOTTE COUNTY  
LINE TO I-75

(F) Indicates Field Information

STATE OF FLORIDA		Sarasota COUNTY	
DEPARTMENT OF TRANSPORTATION			
RIGHT OF WAY MAP			
STATE ROAD NO. 39		Sarasota COUNTY	
BY	DATE	APPROVED BY	DATE
DRAWN JRM	5-6-71	C. W. Monte De Oca	
TRACED TJW	4-5-79		DISTRICT ENGINEER
CHECKED JWD	4-13-79	J. L. Smith	1-16-80
COMPARED JWD	1-3-80		ENGINEER OF RIGHT OF WAY
INDEXED			STATE HIGHWAY ENGINEER
REVISION	BY	DATE	
101 add R	JWD	5-21-80	
SECTION 17160 - (2502) 2503			SHEET 9 OF 12

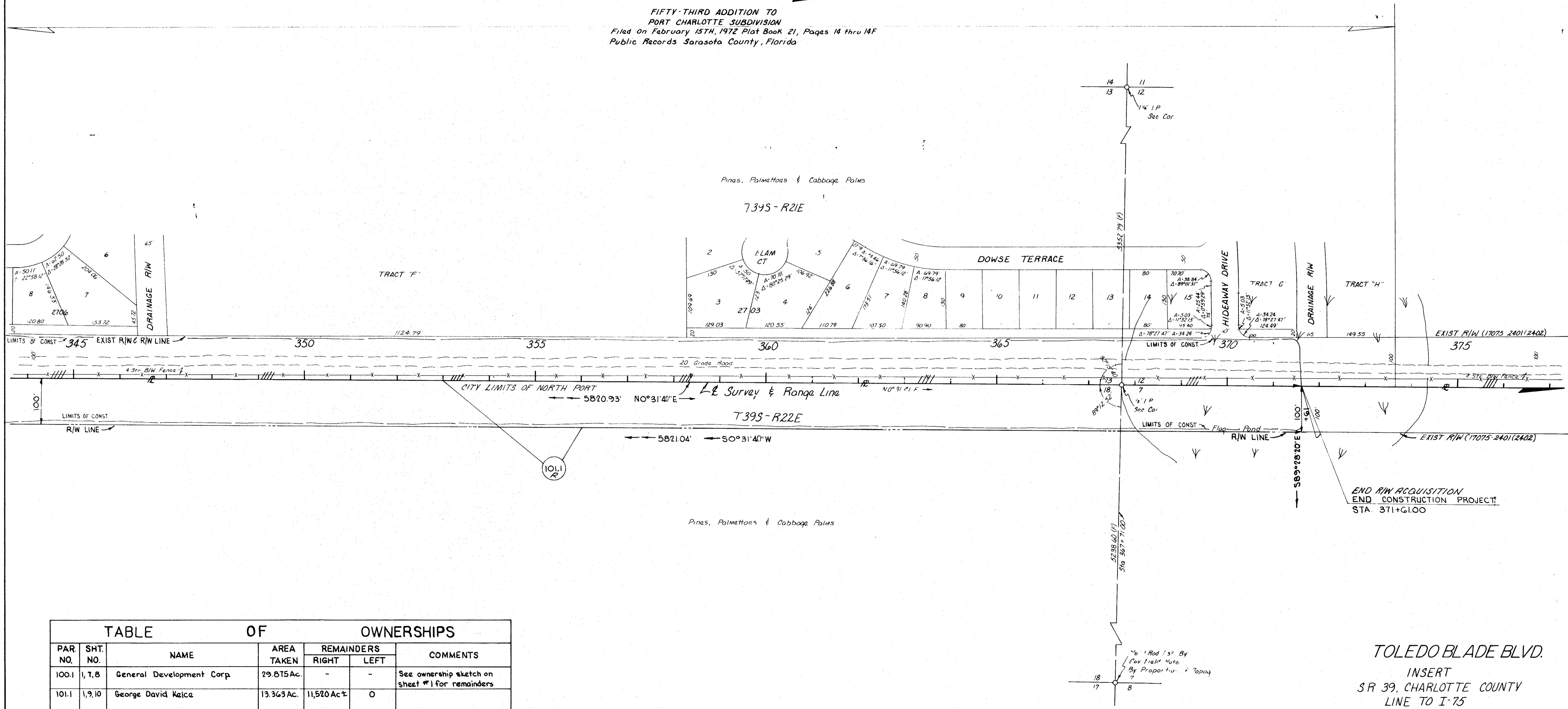
BI No 119129

FED. ROAD DIV. No.	STATE	F. A. PROJECT NO.	FISCAL YEAR	SHEET No.
3	FLA.	RS-1699-(1)		10

CITY OF NORTH PORT

SCALE 1" = 100'

FIFTY-THIRD ADDITION TO  
PORT CHARLOTTE SUBDIVISION  
Filed On February 15TH, 1972 Plat Book 21, Pages 14 thru 14F  
Public Records Sarasota County, Florida



PAR. NO.	SHT. NO.	NAME	AREA TAKEN	REMAINDERS		COMMENTS
				RIGHT	LEFT	
100.1	1, 7, 8	General Development Corp	29.875 Ac.	-	-	See ownership sketch on sheet #1 for remainders
101.1	1, 9, 10	George David Kalca	13.363 Ac.	11,520 Ac±	0	

TOLEDO BLADE BLVD.  
INSERT  
SR 39, CHARLOTTE COUNTY  
LINE TO I-75

(F) Indicates Field Information

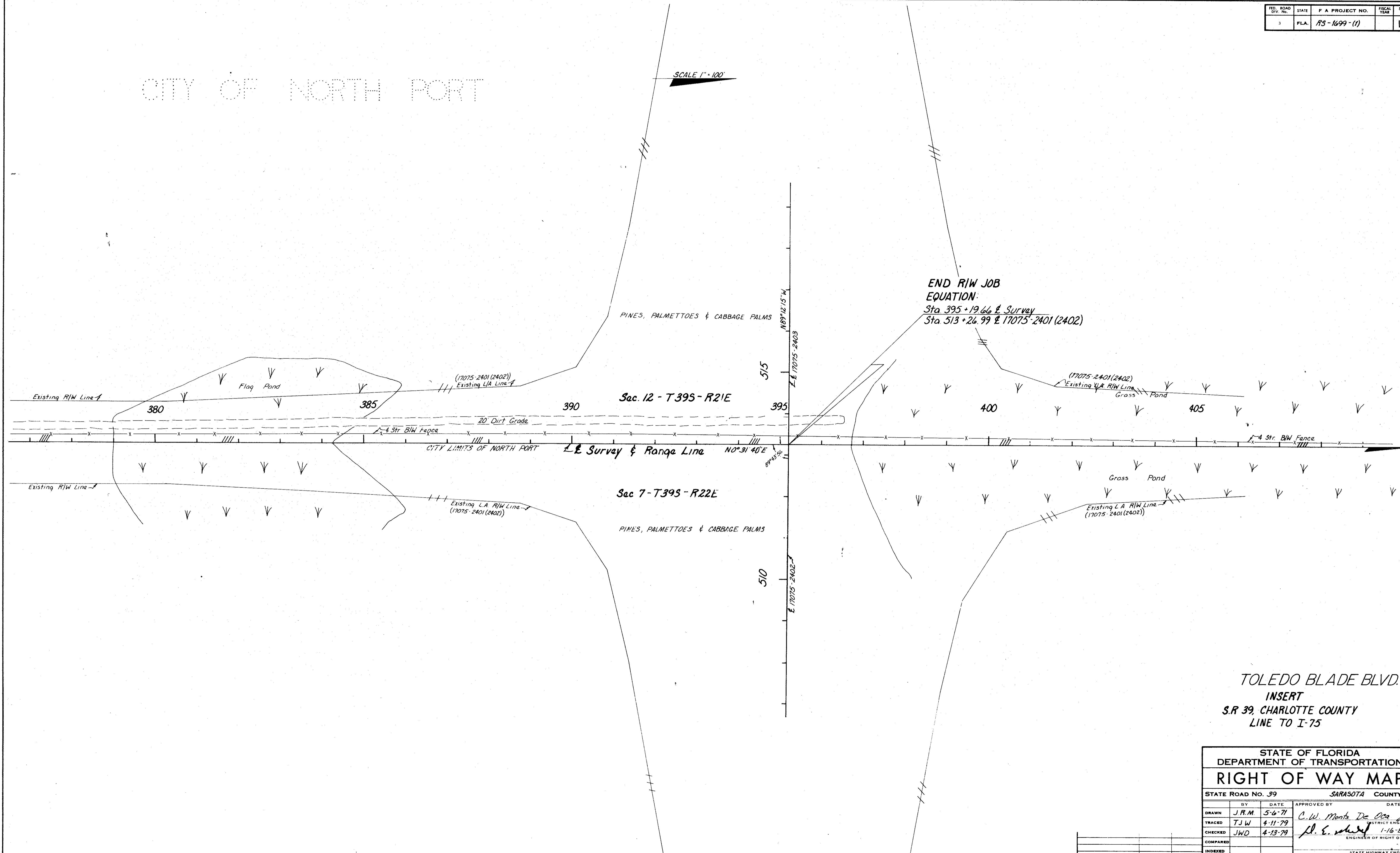
STATE OF FLORIDA DEPARTMENT OF TRANSPORTATION RIGHT OF WAY MAP			
STATE ROAD No. 39		Sarasota COUNTY	
BY	DATE	APPROVED BY	DATE
JRM	5-6-71	C. W. Monte De Cea	
DRAWN		DISTRICT ENGINEER	
TRACED	TJW	4-10-79	
CHECKED	JWD	4-13-79	
COMPARED	JWD	1-3-80	
INDEXED			
SECTION 171160-(2502) 2503		SHEET 10 OF 12	

BI N° 119129

FED. ROAD DIV. No.	STATE	F. A. PROJECT NO.	FISCAL YEAR	SHEET No.
3	FLA.	FS-1699-(1)		11

CITY OF NORTH PORT

SCALE 1" = 100'



END RIW JOB  
EQUATION:  
Sta 395 + 19.66 E Survey  
Sta 513 + 26.99 E 17075-2401 (2402)

TOLEDO BLADE BLVD.  
INSERT  
S.R 39, CHARLOTTE COUNTY  
LINE TO I-75

STATE OF FLORIDA DEPARTMENT OF TRANSPORTATION			
RIGHT OF WAY MAP			
STATE ROAD No. 39		SARASOTA COUNTY	
BY	DATE	APPROVED BY	DATE
J.R.M.	5-6-71	C.W. Ments De Oca	
TRACED	T.J.W.	4-11-79	DISTRICT ENGINEER
CHECKED	J.W.D.	4-13-79	ENGINEER OF RIGHT OF WAY
COMPARED			
INDEXED			

REVISION	BY	DATE

FIFTY-FOURTH ADDITION TO PORT CHARLOTTE SUBDIVISION

Filed on May 31<sup>st</sup>, 1972 in Plat Book 21, Pages 21 thru 21P  
Public Records of Sarasota County, Fl.

FED. ROAD DIV. NO.	STATE	F. A. PROJECT NO.	FISCAL YEAR	SHEET NO.
	FLA.	RS-1699-(1)		12

END DRAINAGE R/W  
STA. 58+45.00

SCALE: 1" = 100'

NO. 7030.9 E  
LIMIT OF CONSTRUCTION  
R/W & EXIST. R/W LINE

EQUATION:  
STA. 219+89.31 E SURVEY =  
BEGIN DRAINAGE R/W SURVEY  
STA. 30+00.00

②  
CURVE DATA  
P.I. STA. 211+00.29  
Δ = 35°24'22" LT.  
D = 1°08'45"  
T = 1596.00'  
L = 3089.77'  
R = 5000.00'  
P.C. STA. 195+04.29  
P.T. STA. 225+94.06

CURVE DATA  
P.I. STA. 45+11.18  
Δ = 45°45'00" RT.  
D = 17°37'46"  
T = 137.12'  
L = 259.51'  
R = 325.00'  
P.C. STA. 43+74.06  
P.T. STA. 46+33.57

TOLEDO BLADE BLVD.

EXIST DRAINAGE R/W  
RT. STA. 219+89.31

Plotted from F.B. No. 022791

STATE OF FLORIDA DEPARTMENT OF TRANSPORTATION			
RIGHT OF WAY MAP			
STATE ROAD NO. 39		SARASOTA COUNTY	
DRAWN	BY	DATE	APPROVED BY
J.W.D.		9-23-79	C.W. Monte De Oca
TRACED	BY	DATE	APPROVED BY
J.W.D.		9-28-79	
CHECKED	BY	DATE	APPROVED BY
C.U.K.		1-02-80	
COMPADED	BY	DATE	APPROVED BY
J.W.D.		1-3-80	
INDEXED	BY	DATE	APPROVED BY

REVISION	BY	DATE

