



EQUATION:  
 STA. 121+25.00 TO 12506 "AHD"  
 AND STA. 120+2505 "BK"  
 STA. 94+5167 SURVEY

BEGIN R/W JOB  
 EQUATION (REVISED CURVE)  
 P.I. STA. 207+203 E 1712(102)2104  
 STA. 198+28.39

CURVE DATA  
 1712(102)2104  
 P.I. STA. 203+24.96  
 Δ = 47°00' LT.  
 D = 5°00'  
 T = 498.26'  
 L = 940.00'  
 R = 1146.92'  
 P.C. STA. 198+26.70  
 P.T. STA. 207+66.70  
 REVISED CURVE DATA  
 1712(102)2104  
 P.I. STA. 203+26.44  
 Δ = 46°58'56" LT.  
 D = 5°00'  
 T = 496.05'  
 L = 939.64'  
 R = 1145.92'  
 P.C. STA. 198+28.39  
 P.T. STA. 207+68.06'

UTILITY OWNERS  
 POWER: FLORIDA POWER & LIGHT CO.  
 TELEPHONE: GENERAL TELEPHONE  
 WATER: SARASOTA WATER & MANATEE WATER

Bearings are based on Florida Plane Coord. System and rounded to nearest second.

MANATEE COUNTY  
 T35S - R18E

SARASOTA COUNTY  
 T36S - R18E

KEY MAP "A"

"THIS RIGHT OF WAY MAP WHEN RECORDED IS AN INSTRUMENT OF TITLE CONVEYANCE, TRANSFERRING IN ACCORDANCE WITH FLORIDA STATUTES 387.29 (1977) ALL RIGHT, TITLE AND INTEREST OF THE FLORIDA DEPARTMENT OF TRANSPORTATION IN THE ROAD, STREET, HIGHWAY SET FORTH ON THIS MAP TO SARASOTA COUNTY."

RECORDED IN PUBLIC RECORDS OF SARASOTA COUNTY, FLORIDA, THIS 25TH DAY OF APRIL A.D. 1983 ROAD PLAT BOOK 2 PAGE 40-40H

CLERK OF CIRCUIT COURT  
 SARASOTA COUNTY, FLORIDA

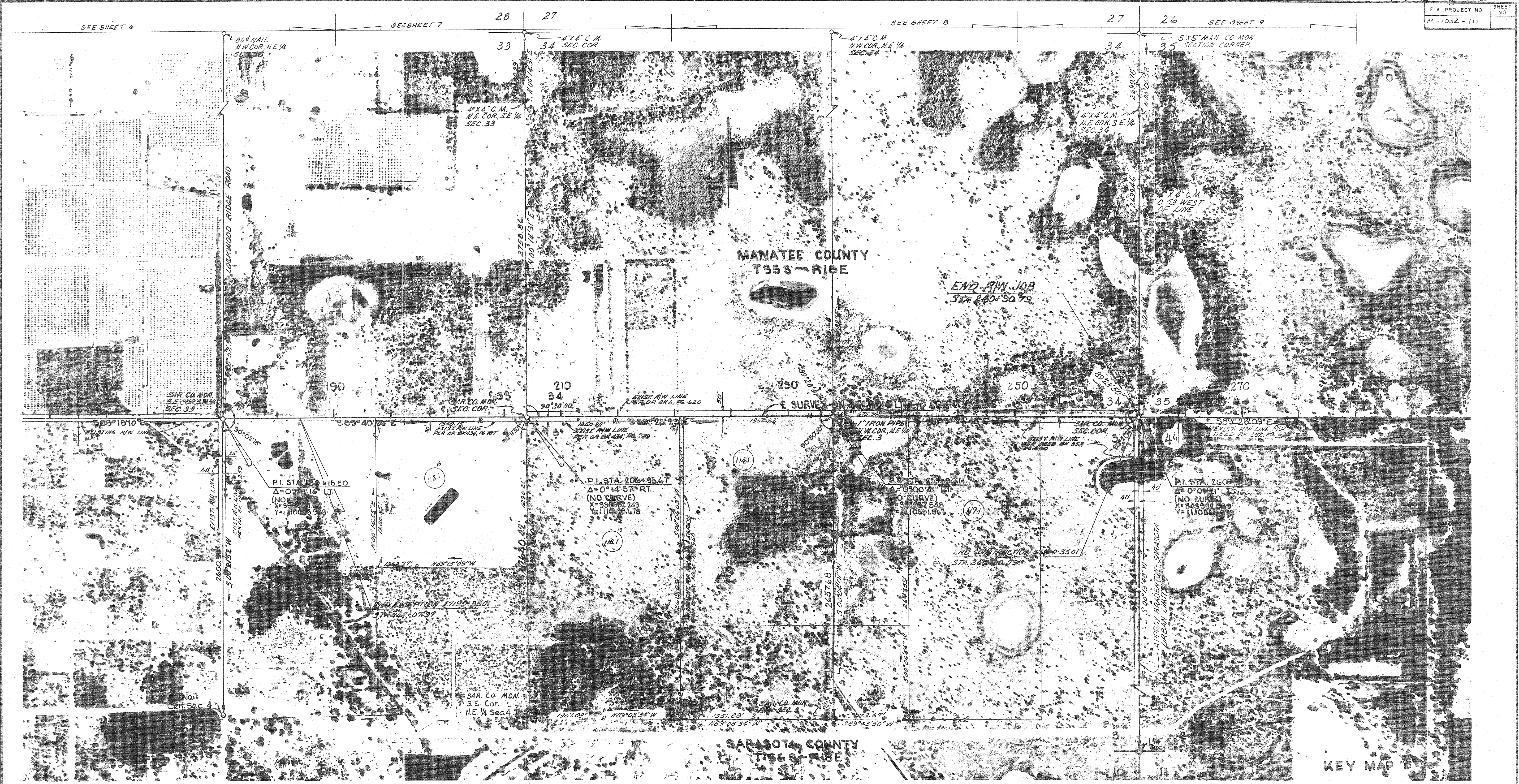
FLORIDA DEPARTMENT OF TRANSPORTATION  
 RIGHT OF WAY ENGINEERING SECTION

RIGHT OF WAY MAP

STATE ROAD NO. 603	SARASOTA COUNTY
BY DATE	APPROVED BY DATE
DRAWN J.W.D. 10-11-77	Traced J.W.D. 10-25-77
CHECKED L.R.V. 4-1-78	FIELD BOOK NO. 1A
W.P. NO. 11902	SCALE 1" = 400'
SECTION 1, 2, 3	SHEET 1 OF 15

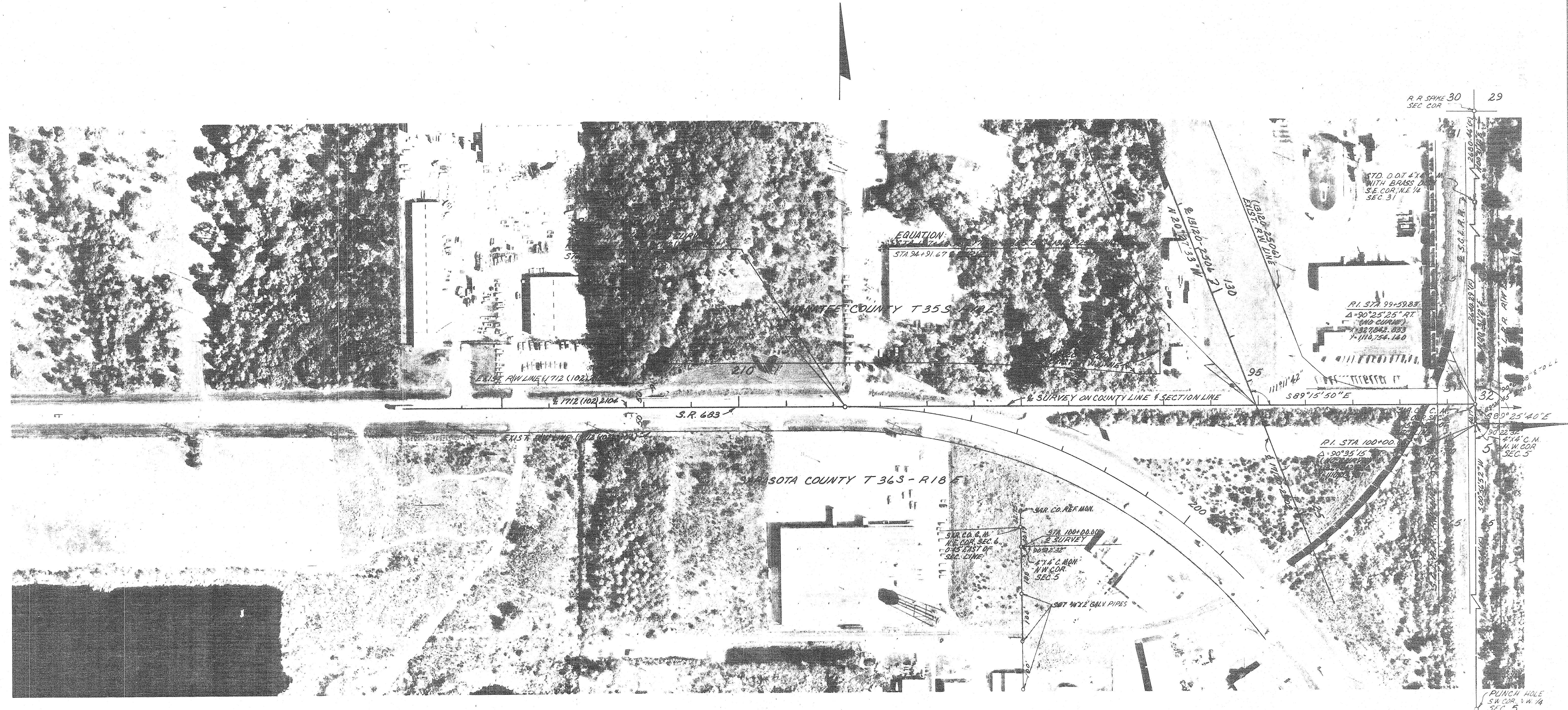
REVISION	BY	DATE

F.A. PROJECT NO.	SHEET NO.
M-1032-11	



FLORIDA DEPARTMENT OF TRANSPORTATION RIGHT OF WAY ENGINEERING SECTION			
<b>RIGHT OF WAY MAP</b>			
STATE ROAD NO. 610		SARASOTA COUNTY	
BY	DATE	APPROVED BY	DATE
DRAWN J.W.D.	10-11-77	<i>C.W. Monte de Oca</i>	
TRACED J.W.D.	10-25-77	DISTRICT ENGINEER	
CHECKED L.R.J.	6-1-78	<i>Carl R. Riddell</i>	6-26-78
MAPS PREPARED BY		FIELD ENGINEER OF RIGHT OF WAY	
1st DISTRICT		FIELD BOOK NO'S	
W.P.I. NO 119021		SCALE: 1" = 400'	
SECTION 17190-2501		SHEET 2 OF 10	

ADD PAR. 119.1	JUS-VGS	9-19-78
REVISION	BY	DATE



**CURVE DATA**  
 1712 (102) 2104  
 P.I. STA 203+24.96  
 Δ = 47° 00' 00" LT  
 D = 5' 00"  
 T = 498.24  
 L = 940.00  
 R = 1145.92  
 P.C. STA 198+26.70  
 P.T. STA 207+66.70

**REVISED CURVE DATA**  
 1712 (102) 2104  
 P.I. STA 203+26.44  
 Δ = 46° 58' 56" LT  
 D = 5' 00"  
 T = 498.05'  
 L = 939.64'  
 R = 1145.92  
 P.C. STA 198+28.39  
 P.T. STA 207+68.03

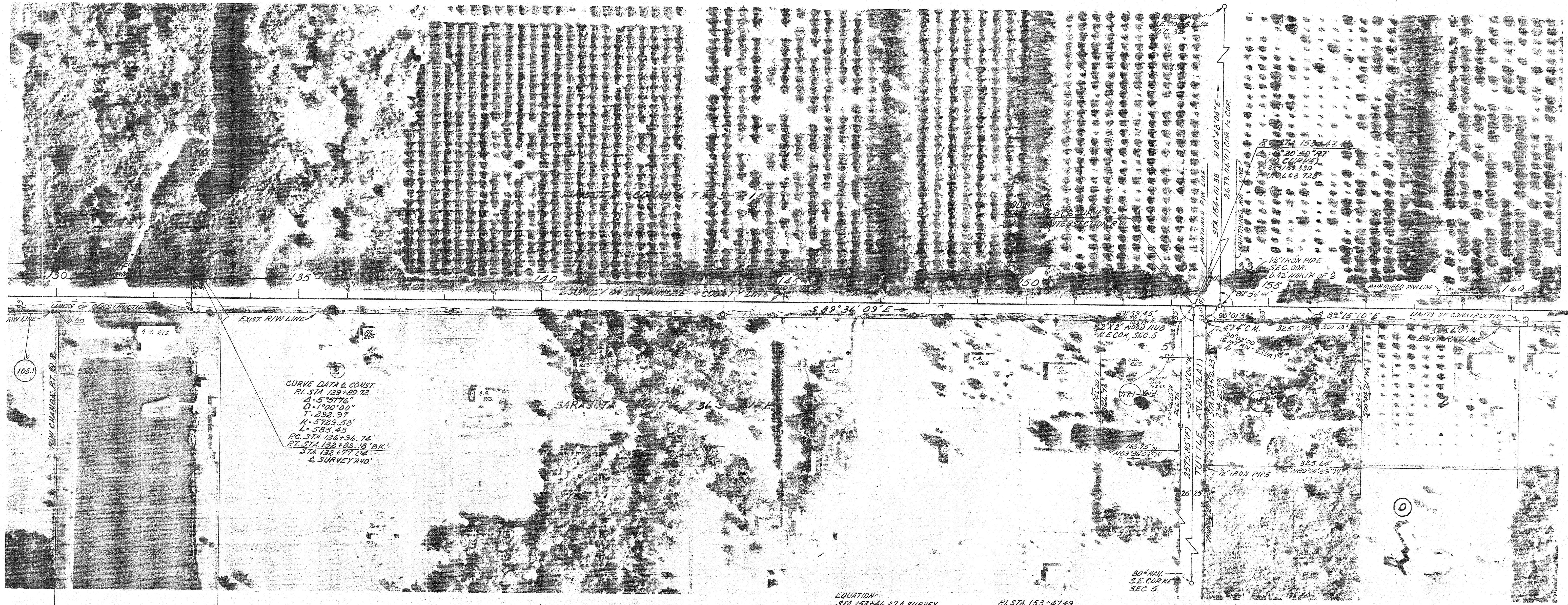
**INSERT**

Indicates Field Dimension

FLORIDA DEPARTMENT OF TRANSPORTATION RIGHT OF WAY ENGINEERING SECTION			
<b>RIGHT OF WAY MAP</b>			
STATE ROAD NO. 610		SARASOTA COUNTY	
BY	DATE	APPROVED BY	DATE
DRAWN	J.W.D. 10-11-77	C.M. [Signature]	6-1-78
TRACED	L.A. 10-22-77	[Signature]	DISTRICT ENGINEER
CHECKED	L.A.J. 6-1-78	[Signature]	6-20-78
MAPS PREPARED BY 1 <sup>ST</sup> DISTRICT		FIELD BOOK NO. 5	
W.P.I. NO. 119021		SCALE 1" = 100'	
SECTION 17190-2501		SHEET 3 OF 10	

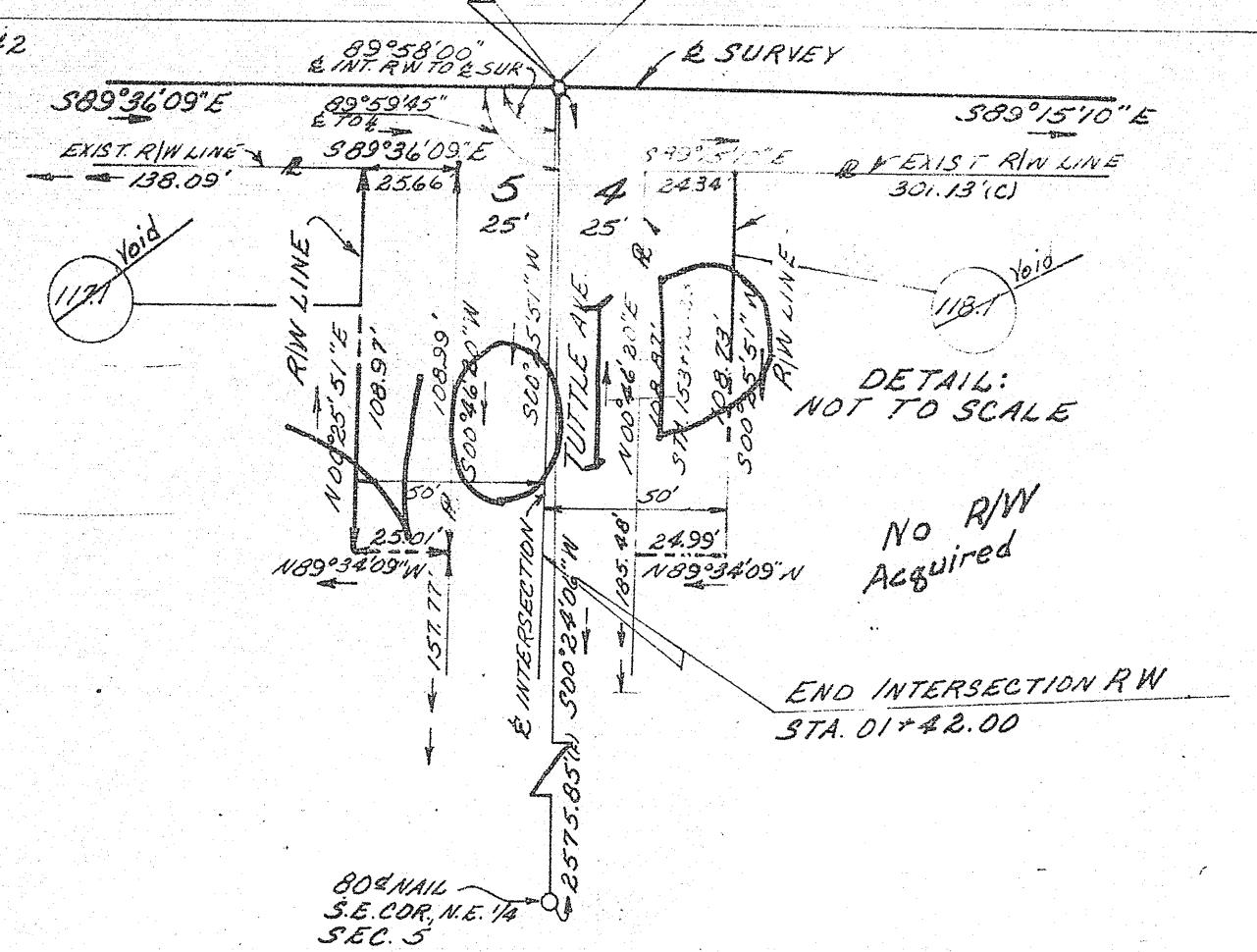
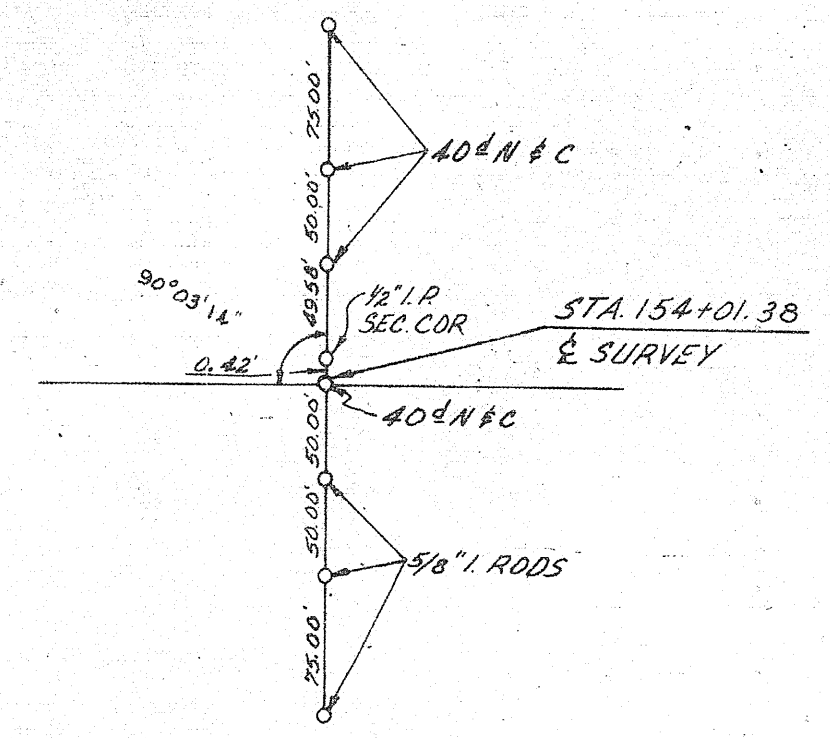
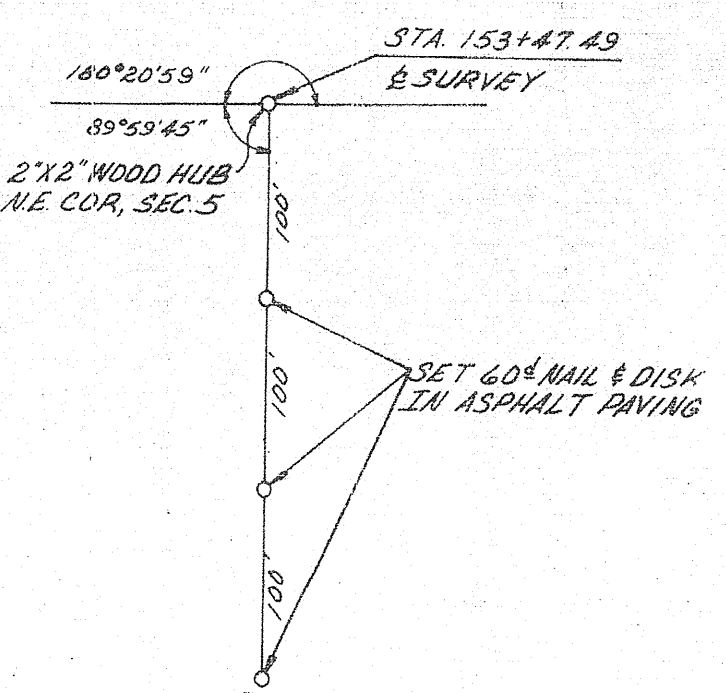
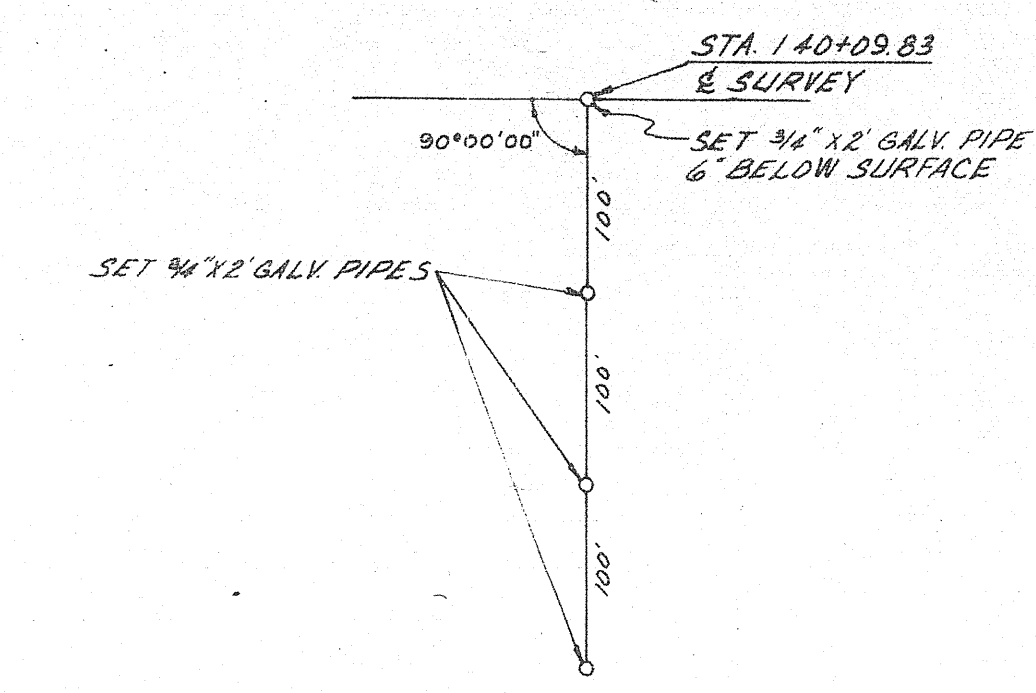
REVISION	BY	DATE





**CURVE DATA & CONST.**  
 P.I. STA 125+89.72  
 A=5° 57' 16"  
 D=1700' 00"  
 T=292.97'  
 R=5729.58'  
 L=585.43'  
 P.C. STA 126+36.74  
 P.T. STA 132+82.18 'B.K.'  
 STA 132+77.07  
 & SURVEY AND!

**EQUATION:**  
 STA 153+46.37 & SURVEY  
 STA 0+00 & INT. R/W



INSERT

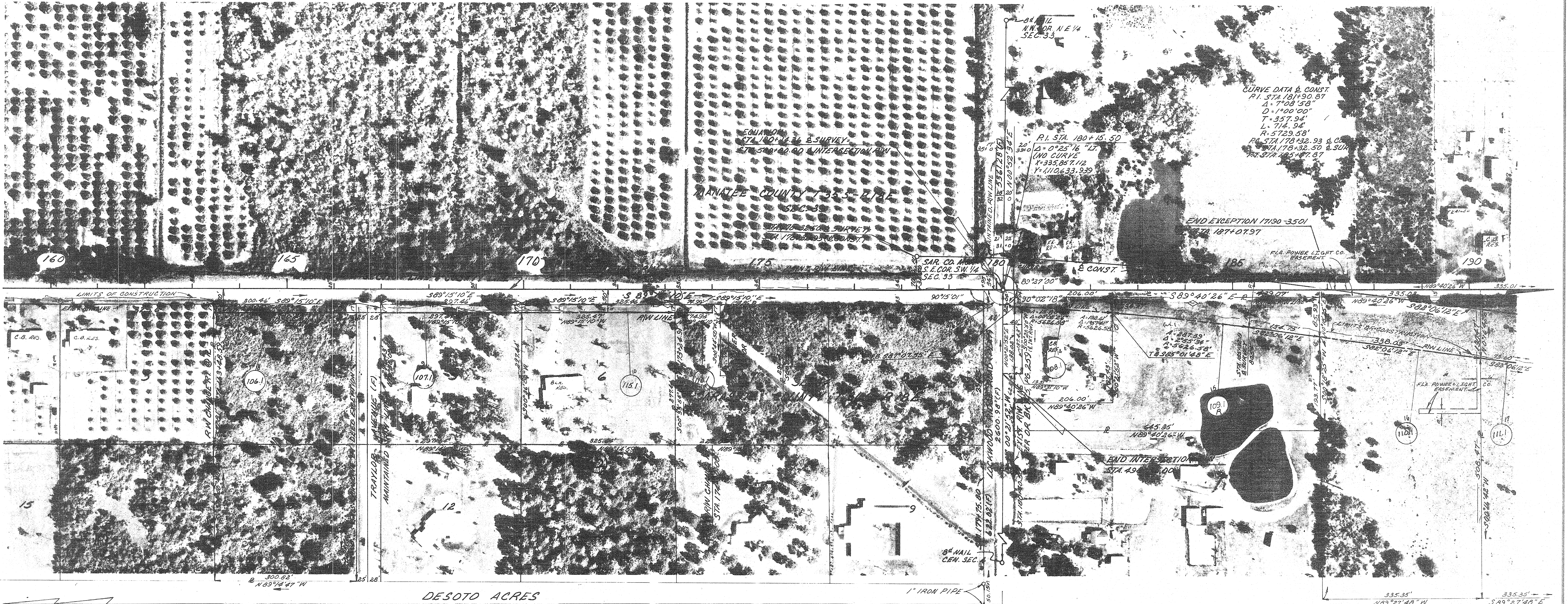
(\*) Indicates Field Dimension

FLORIDA DEPARTMENT OF TRANSPORTATION  
 RIGHT OF WAY ENGINEERING SECTION

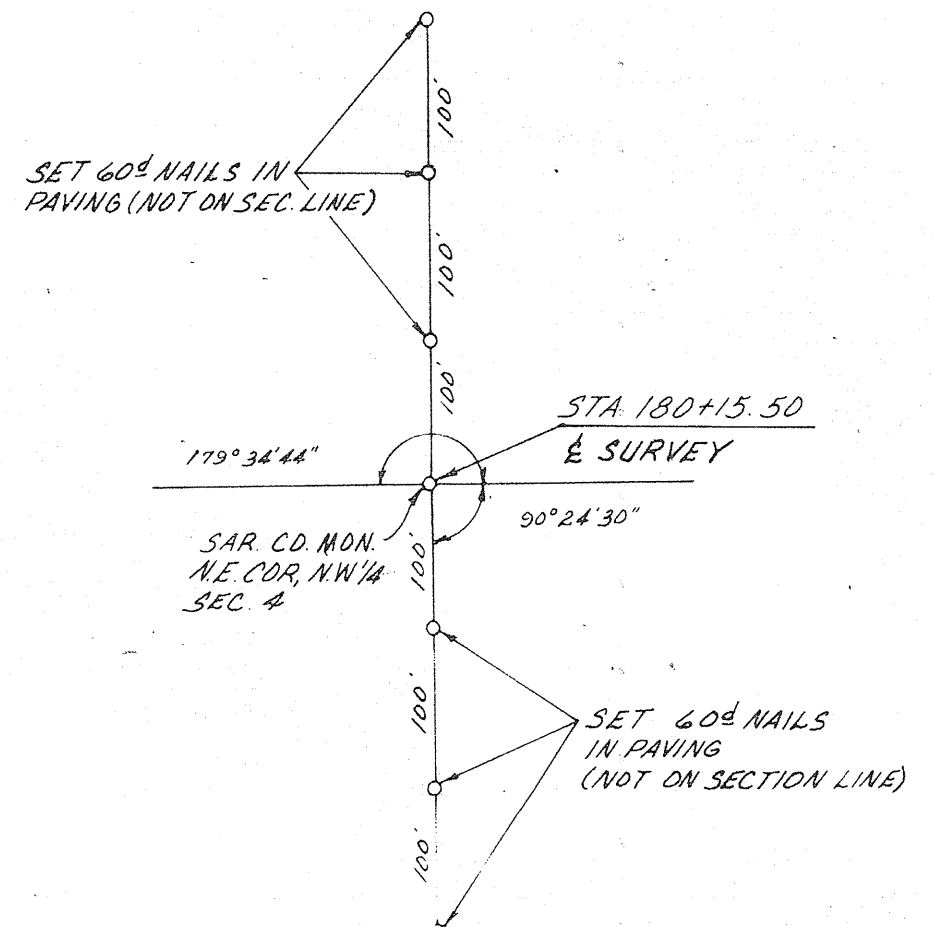
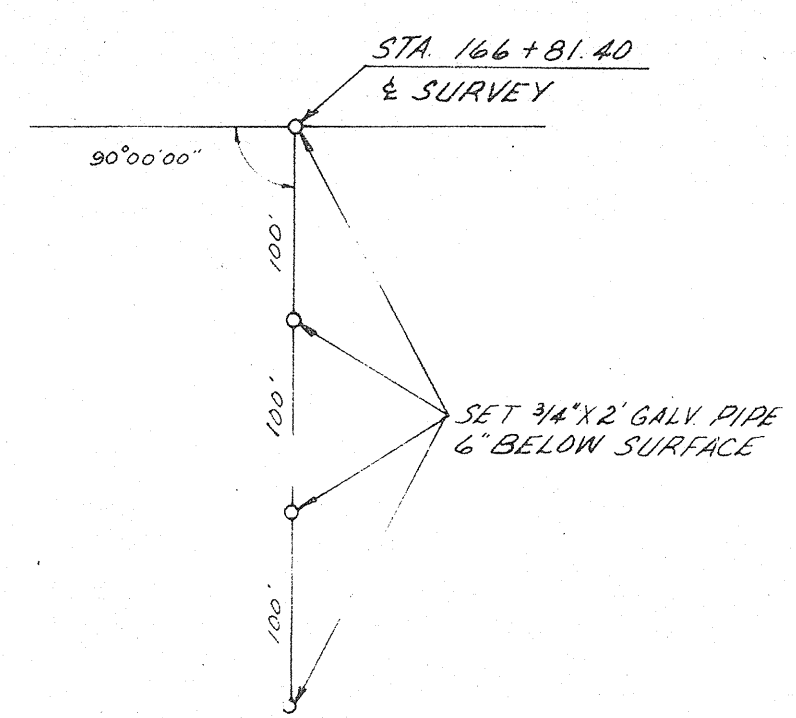
**RIGHT OF WAY MAP**

STATE ROAD NO. 610		SARASOTA COUNTY	
BY	DATE	APPROVED BY	DATE
DRAWN	J.W.D. 10-12-77	<i>C.M. Monte De...</i>	6-1-78
TRACED	L.A. 10-23-77	DISTRICT ENGINEER	
CHECKED	L.R.V. 6-1-78	<i>Carl B. R...</i>	6-26-78
MAPS PREPARED BY		ENGINEER OF RIGHT OF WAY	
1 <sup>ST</sup> DISTRICT		FIELD BOOK NO'S	
W.P.I. NO. 11921		SCALE: 1" = 100'	
SECTION 17190-2501		SHEET 5 OF 10	

VOID PER 11711B	LA-RPH	9-7-78
REVISION	BY	DATE



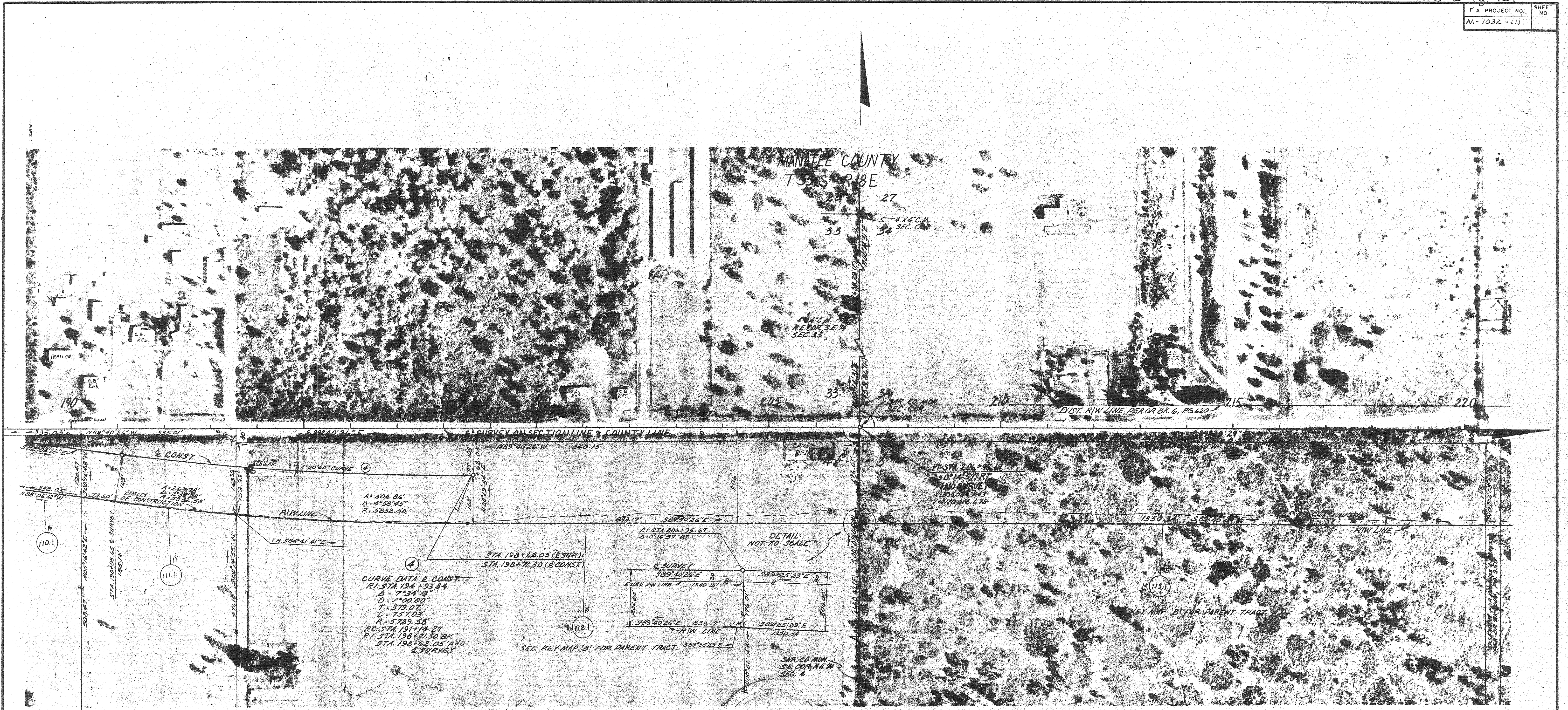
DESOTO ACRES  
FILED MARCH 16, 1945 P.B. & PG. 41 & 42



INSERT

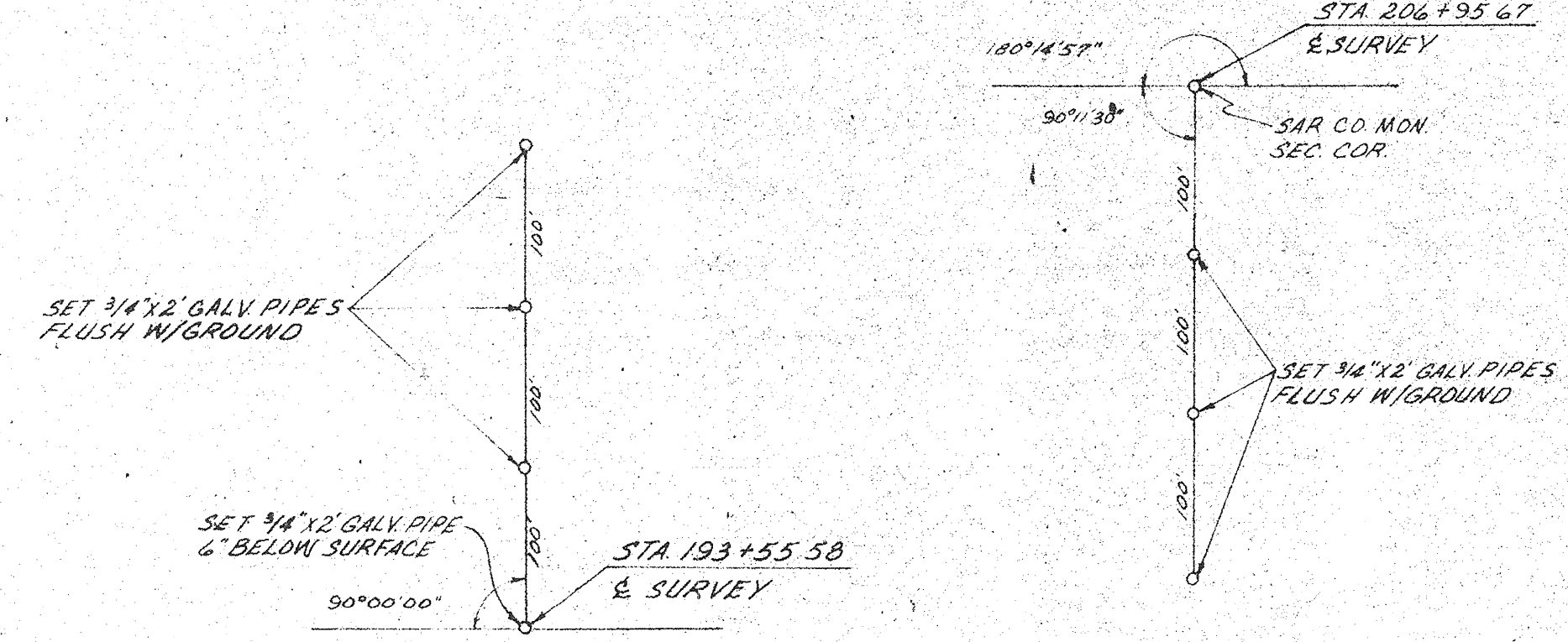
(\*) Indicates Field Dimension

FLORIDA DEPARTMENT OF TRANSPORTATION RIGHT OF WAY ENGINEERING SECTION			
<b>RIGHT OF WAY MAP</b>			
STATE ROAD NO. 610 SARASOTA		COUNTY	
BY	DATE	APPROVED BY	DATE
DRAWN J.W.D.	10-13-77	C. W. Montealegre	6-7-78
TRACED L.A.	10-24-77	DISTRICT ENGINEER	
CHECKED L.R.J.	6-1-78	C. S. R. R. R.	6-26-78
MAPS PREPARED BY 1 <sup>ST</sup> DISTRICT		FIELD BOOK NO. 5	
W.P.I. NO. 119021		SCALE 1" = 100'	
SECTION 17190-2501		SHEET 4 OF 10	



SARASOTA COUNTY  
T36S-R18E

INSERT

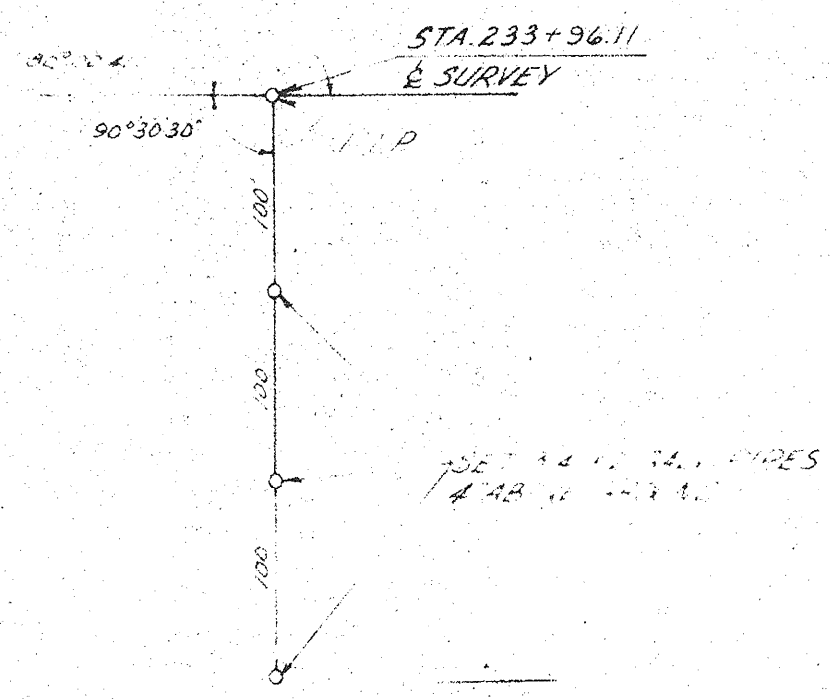
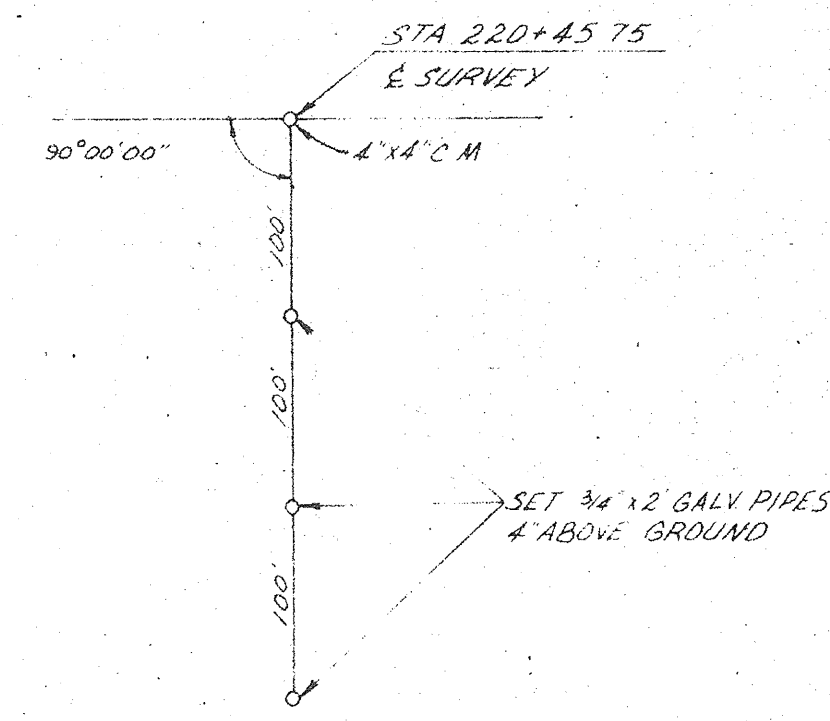
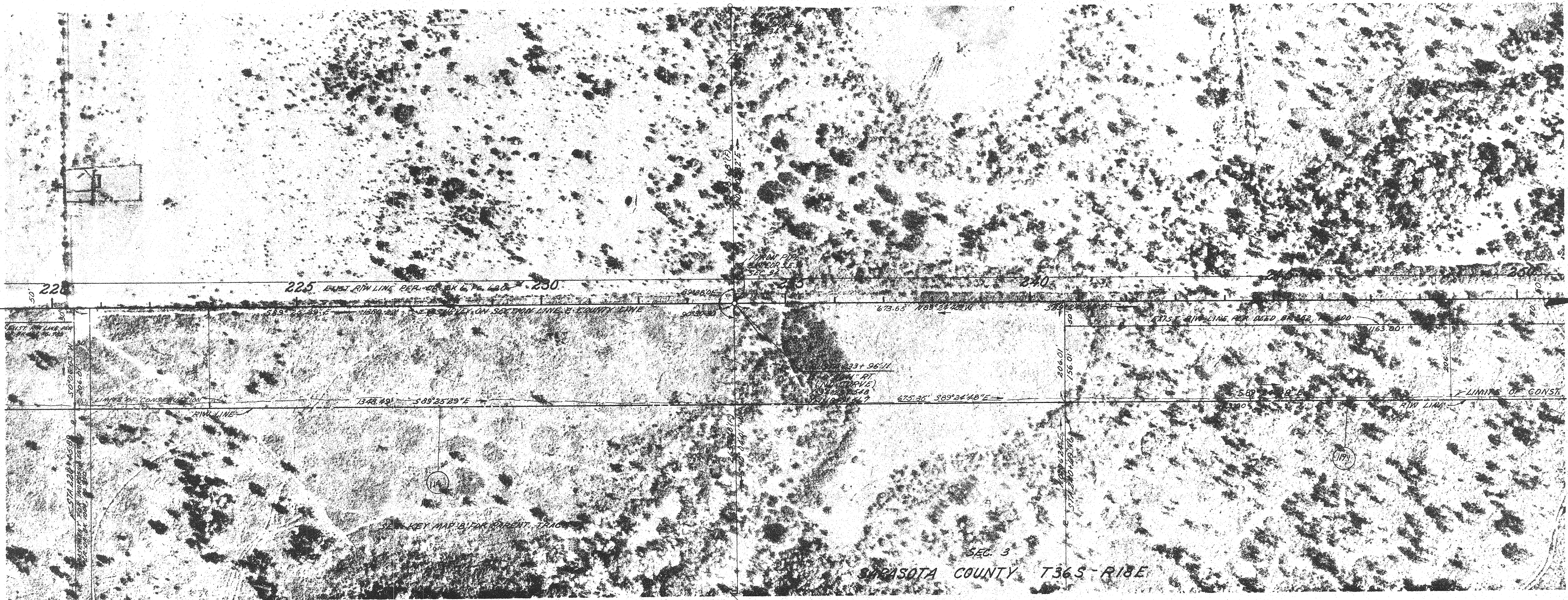


(D) indicates Field Dimension

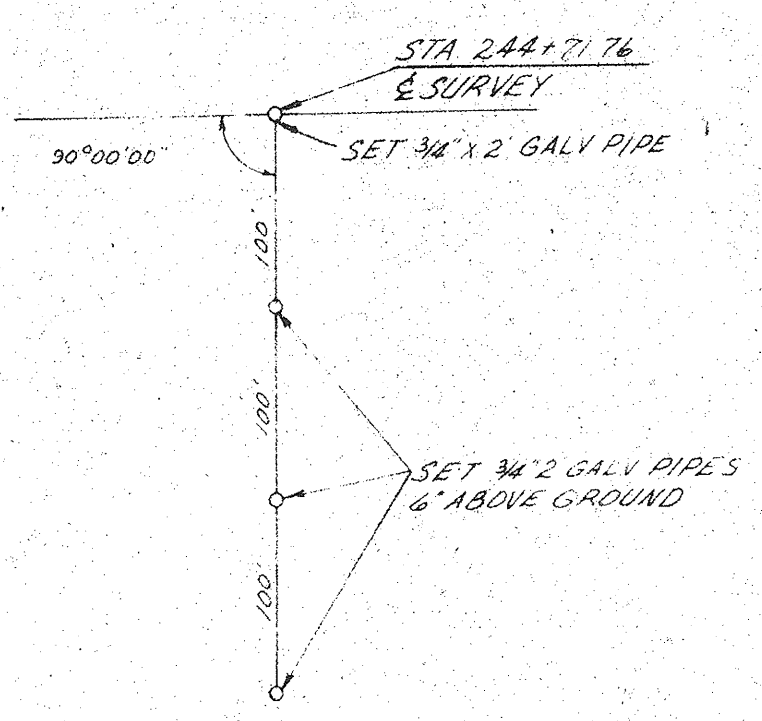
FLORIDA DEPARTMENT OF TRANSPORTATION RIGHT OF WAY ENGINEERING SECTION			
<b>RIGHT OF WAY MAP</b>			
STATE ROAD NO. 610		SARASOTA COUNTY	
BY	DATE	APPROVED BY	DATE
DRAWN J.W.D.	10-13-77	C.M. Monte Du Be...	6-1-78
TRACED T.J.W.	10-24-77	DISTRICT ENGINEER	
CHECKED L.R.V.	6-1-78	Cecil L. Ruffell	6-26-78
MAPS PREPARED BY 1 <sup>ST</sup> DISTRICT		FIELD BOOK NO.'S 1-A	
W.P.I. NO. 119261		SCALE 1" = 100'	
REVISION	BY	DATE	SECTION 17190-2501 SHEET 7 OF 10

F.A. PROJECT NO.	SHEET NO.
M-1032-(1)	

MANATEE COUNTY  
T35S - R18E - SEC 34



SAR CO MON  
CEN SEC. 3



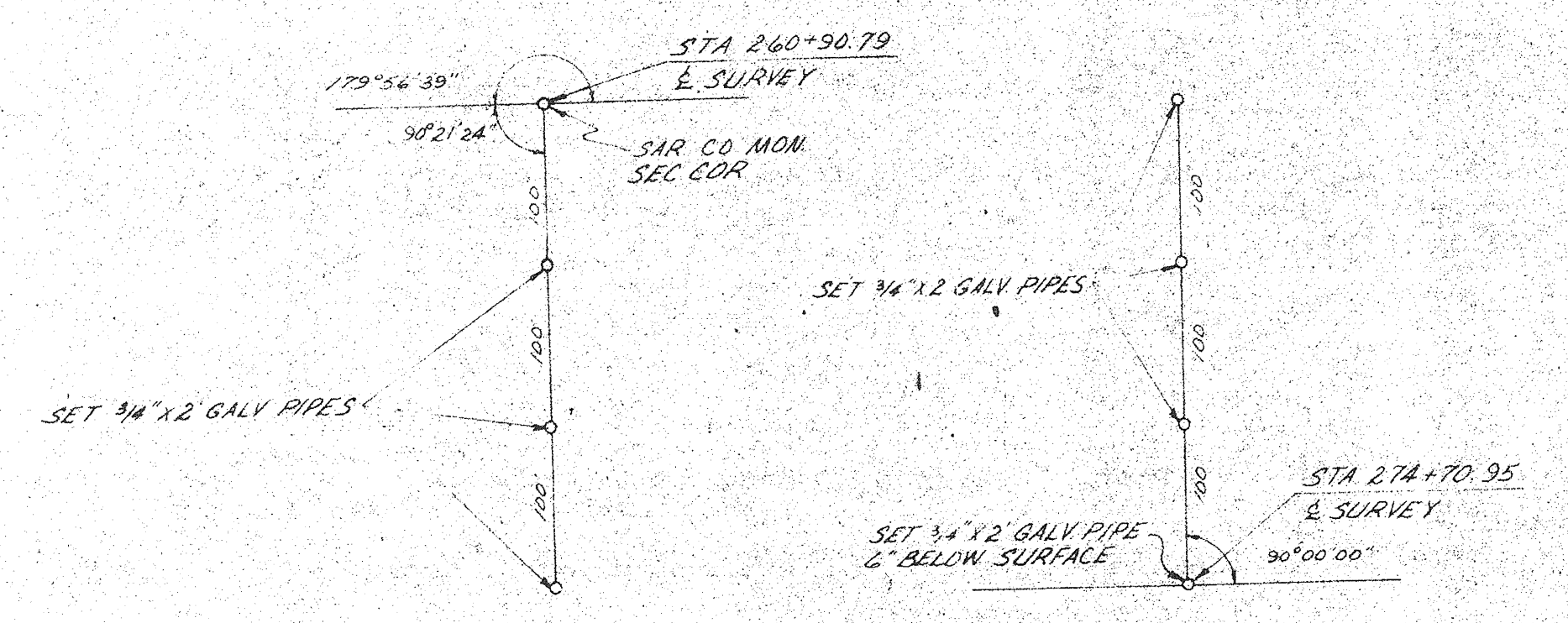
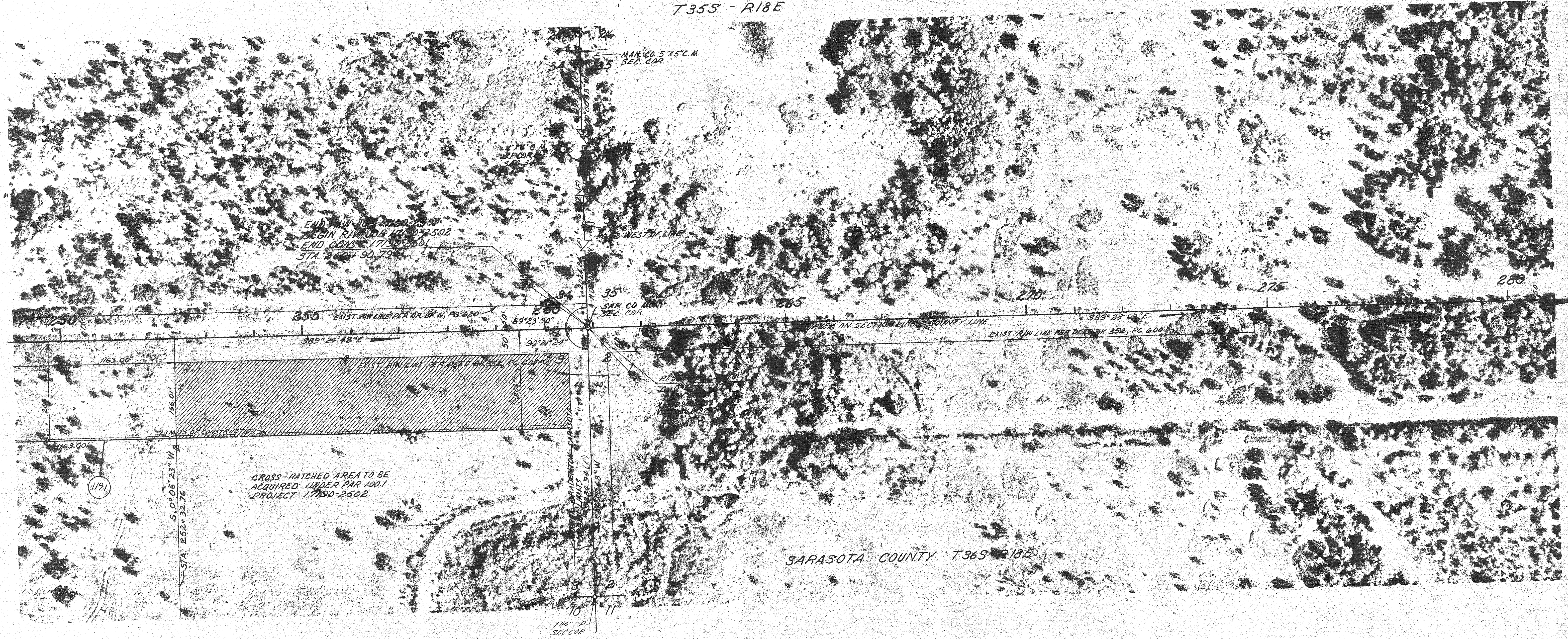
INSERT

INDICATES FIELD DIMENSION

FLORIDA DEPARTMENT OF TRANSPORTATION RIGHT OF WAY ENGINEERING SECTION			
STATE ROAD NO. 610		SARASOTA COUNTY	
BY	DATE	APPROVED BY	DATE
U.D.	10-21-77	C. M. Montealegre	6-7-78
DRAWN		DISTRICT ENGINEER	
TRACED		ENGINEER OF RIGHT OF WAY	
CHECKED		ENGINEER OF RIGHT OF WAY	
MAPS PREPARED BY		FIELD BOOK NO'S	
15 <sup>th</sup> DISTRICT		1.A	
ADD. PAR. 191	JVS-VGS	9-19-78	W. P. NO. 119021
Chg. Dim.	BB-DJC	7-7-78	SCALE 1" = 100'
REVISION	BY	DATE	SECTION 17190-2551 SHEET 8 OF 10

MANATEE COUNTY  
 T35S - R18E

SARASOTA COUNTY T36S - R18E



INSERT

INDICATES FIELD DIMENSION

FLORIDA DEPARTMENT OF TRANSPORTATION RIGHT OF WAY ENGINEERING SECTION			
<b>RIGHT OF WAY MAP</b>			
STATE ROAD NO. 610		SARASOTA COUNTY	
BY	DATE	APPROVED BY	DATE
DRAWN U.D.	10-20-78	<i>C. M. Monte</i>	6-1-78
TRACED C.M.	10-23-77	DISTRICT ENGINEER	
CHECKED L.R.V.	6-1-78	<i>Carl J. Rottell</i>	6-26-78
MAPS PREPARED BY 1ST DISTRICT		FIELD BOOK NO. 5 1/A	
W.P.I. NO. 119021		SCALE 1" = 100'	
SECTION 1190-2501		SHEET 7 OF 10	

ADD PAR. 1191	JJS-VGS	9-20-78
REVISION	BY	DATE