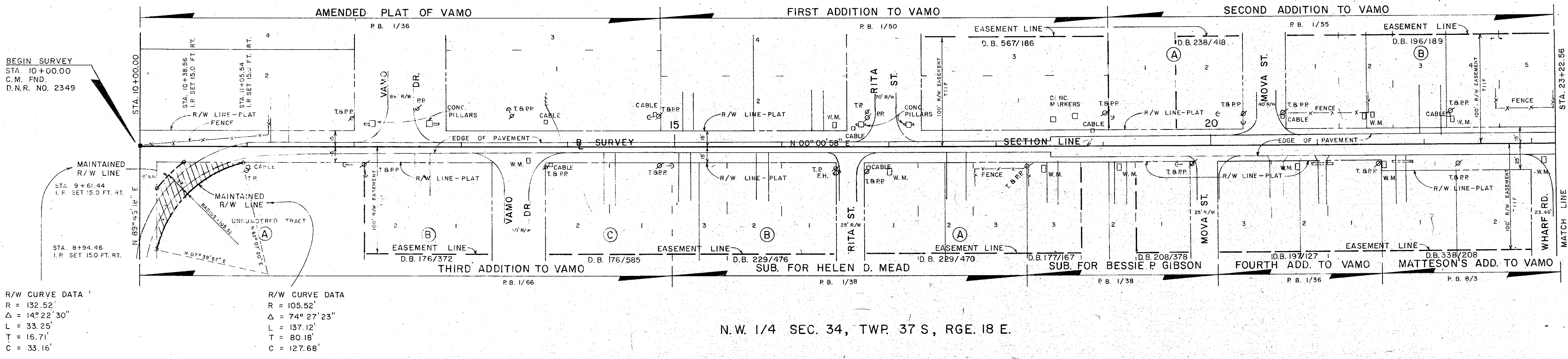


SCALE 1" = 50'

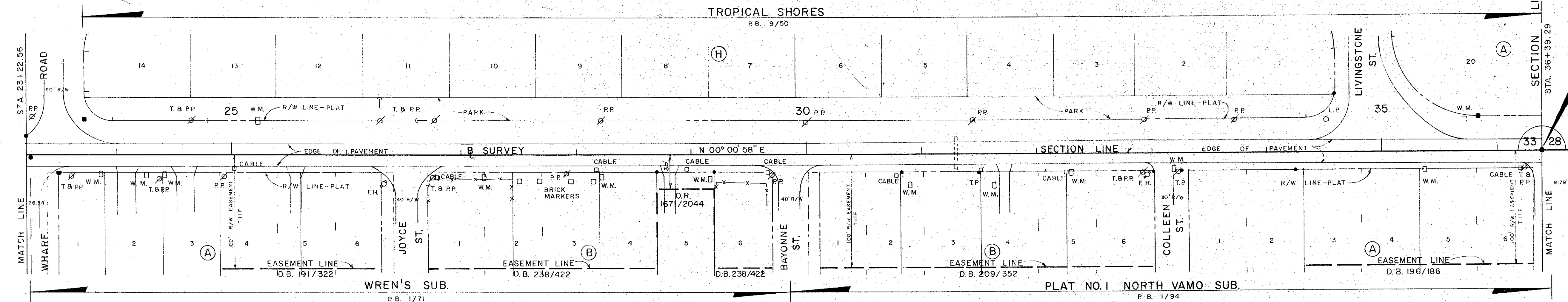
N.E. 1/4 SEC. 33, TWP. 37 S, RGE. 18 E.



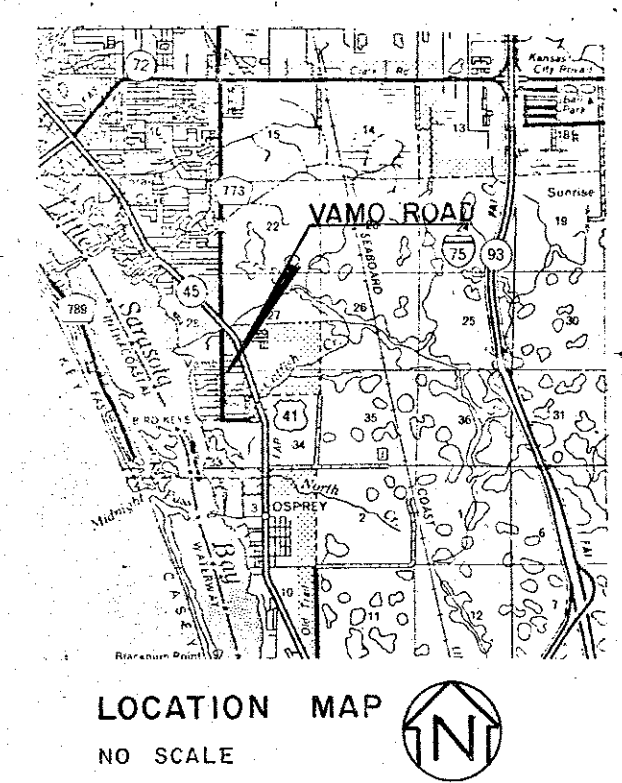
N.W. 1/4 SEC. 34, TWP. 37 S, RGE. 18 E.

SCALE 1" = 50'

N.E. 1/4 SEC. 33, TWP. 37 S, RGE. 18 E.



N.W. 1/4 SEC. 34, TWP. 37 S, RGE. 18 E.



LOCATION MAP  
NO SCALE

- LEGEND**
- ⊗ T.P. TELEPHONE POLE
  - ⊗ P.P. POWER POLE
  - GUY WIRE
  - CABLE BOX
  - W.M. WATER METER
  - ⊕ F.H. FIRE HYDRANT
  - L.P. LIGHT POST
  - IRON PIN FOUND
  - NAIL & DISC FOUND
  - R.R. SPIKE FOUND
  - CONC. MONUMENT FOUND
  - IRON PIN FOUND
  - IRON PIN SET W/RED CAP STAMPED COUNTY R/W, PLS 1867.

THIS IS TO CERTIFY THAT THE NUMBERED SHEETS ONE(1) THROUGH TWO(2) CONSTITUTE THE OFFICIAL MAINTENANCE MAP SHOWING THE LOCATION AND SURVEY BY THE SARASOTA COUNTY, FLORIDA, TRANSPORTATION DEPARTMENT FOR VAMO ROAD LYING BETWEEN VAMO WAY AND TAMiami TRAIL, U.S. 41 (S.R. 45), IN SECTIONS 27, 28, 33 AND 34, TOWNSHIP 37 S, RANGE 18 E, SARASOTA COUNTY, FLORIDA. THE PROPERTY SHOWN CROSS-HATCHED ON THIS MAP HAS BEEN VESTED IN SARASOTA COUNTY, FLORIDA, PURSUANT TO THE PROVISIONS OF CHAPTER 95.361, FLORIDA STATUTES OF 1983.

ACCEPTED FOR FILES AND RECORDED IN THE PUBLIC RECORDS OF SARASOTA COUNTY, FLORIDA THIS 13 DAY OF JAN. A. D. 1986, IN ROAD PLAT BOOK 3, PAGE 2-2A.

*Arnell G. Hastings*  
CLERK OF THE CIRCUIT COURT  
SARASOTA COUNTY, FLORIDA.

THIS IS TO CERTIFY THAT THIS MAINTENANCE MAP WAS APPROVED BY RESOLUTION NO. 86-6 PASSED AND ADOPTED BY THE BOARD OF COUNTY COMMISSIONERS OF SARASOTA COUNTY, FLORIDA, ON THE 7<sup>TH</sup> DAY OF JANUARY A. D. 1986.

BOARD OF COUNTY COMMISSIONERS OF SARASOTA COUNTY, FLORIDA BY:  
*Jim Greenwald*

ATTEST:  
R.H. HACKNEY JR. CLERK OF THE CIRCUIT COURT AND EX-OFFICIO CLERK OF THE BOARD OF COUNTY COMMISSIONERS OF SARASOTA COUNTY, FLORIDA BY:  
*Charlene H. Henry*  
DEPUTY CLERK

THIS IS TO CERTIFY THAT THE LIMITS OF THE ROADWAY OUTSIDE OF PLATTED RIGHT-OF-WAY, AS SHOWN CROSS-HATCHED HEREON, HAS BEEN MAINTAINED CONTINUOUSLY FOR OVER FOUR (4) YEARS WITHOUT INTERRUPTION.

*Paul Kopitzke*  
SUPERINTENDENT  
ROAD & BRIDGE DIVISION

**SURVEYOR'S CERTIFICATE**

I HEREBY CERTIFY THAT THIS MAINTAINED R/W MAP REPRESENTS A BOUNDARY SURVEY OF THE ROAD AS SHOWN, THAT THE SURVEY WAS RECENTLY PERFORMED UNDER MY DIRECTION, AND THAT IT IS TRUE AND CORRECT TO THE BEST OF MY KNOWLEDGE AND BELIEF, AND THAT IT MEETS THE MINIMUM TECHNICAL STANDARD FOR LAND SURVEYING IN THE STATE OF FLORIDA (CH.21-HH-6, F.A.C.) EFFECTIVE SEPT. 1, 1981.

DATE OF SURVEY: 12-20-85

*E.R. Emerson*  
E.R. EMERSON, COUNTY SURVEYOR  
PROFESSIONAL LAND SURVEYOR NO. 1867  
STATE OF FLORIDA  
1301 CATTLEMAN ROAD  
SARASOTA, FLORIDA 33582

12-30-85  
DATE

SARASOTA COUNTY TRANSPORTATION DEPARTMENT  
ENGINEERING DIVISION, CADASTRAL SECTION

**MAINTAINED  
RIGHT OF WAY MAP**

VAMO ROAD  
VAMO WAY TO TAMiami TRAIL

BY	DATE	DATE
A.B.B.	12-6-85	12-31-85
B.	12-6-85	12-31-85
D.R.D.	12-6-85	12-31-85
F.B. 291 Pgs 23-75		

SCALE 1" = 50' PROJECT NO. 8524 SHEET 1 OF 2

B.C.C. RESO. 86-06, O.R.B. 1828, PG. 2781

