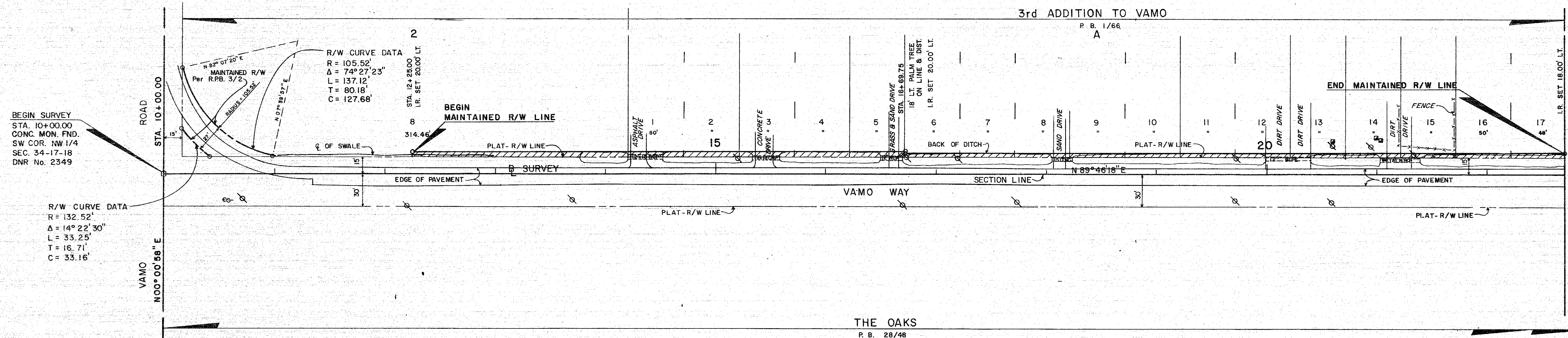
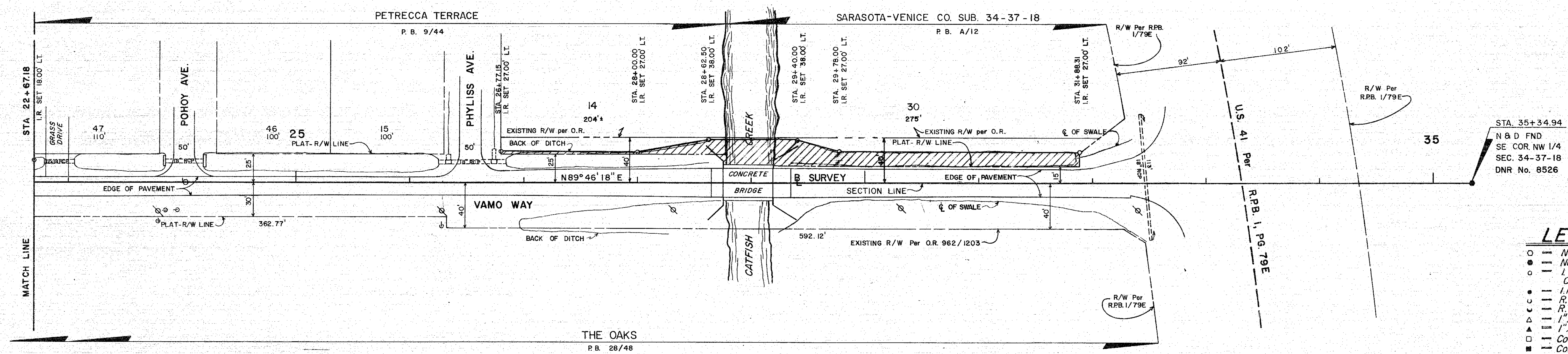


N.W. 1/4 SEC. 34, TWP 37 S, RGE. 18 E.



S.W. 1/4 SEC. 34, TWP 37 S, RGE. 18 E.

N.W. 1/4 SEC. 34, TWP 37 S, RGE. 18 E.



S.W. 1/4 SEC. 34, TWP 37 S, RGE. 18 E.

THIS IS TO CERTIFY THAT THE NUMBERED SHEETS ONE (1) THROUGH ONE (1) CONSTITUTE THE OFFICIAL MAINTENANCE MAP SHOWING THE LOCATION AND SURVEY BY THE SARASOTA COUNTY, FLORIDA, TRANSPORTATION DEPARTMENT FOR VAMO WAY BETWEEN VAMO DRIVE AND U.S. 41 IN SECTION 34, TOWNSHIP 37 SOUTH, RANGE 18 EAST, SARASOTA COUNTY, FLORIDA. THE PROPERTY SHOWN CROSS-HATCHED ON THIS MAP HAS BEEN VESTED IN SARASOTA COUNTY, FLORIDA PURSUANT TO THE PROVISIONS OF CHAPTER 95.361, FLORIDA STATUTES OF 1985.

ACCEPTED FOR FILES AND RECORDED IN THE PUBLIC RECORDS OF SARASOTA COUNTY, FLORIDA THIS 30th DAY OF SEPTEMBER A.D., 1986, IN ROAD PLAT BOOK 9, PAGE 17.

*John G. DeBary*  
CLERK OF THE CIRCUIT COURT  
SARASOTA COUNTY, FLORIDA

THIS IS TO CERTIFY THAT THIS MAINTENANCE MAP WAS APPROVED BY RESOLUTION NO. 886-456 PASSED AND BY THE BOARD OF COUNTY COMMISSIONERS OF SARASOTA COUNTY, FLORIDA, ON THE 30th DAY OF SEPTEMBER A.D., 1986.

*Jim Greenwell*  
MAN

ATTEST:  
R.H. HACKNEY JR., CLERK OF THE CIRCUIT COURT AND EX-OFFICIO CLERK OF THE BOARD OF COUNTY COMMISSIONERS OF SARASOTA COUNTY, FLORIDA BY:  
*Susan Thompson*  
DEPUTY CLERK

THIS IS TO CERTIFY THAT THE LIMITS OF THE ROADWAY OUTSIDE OF PLATTED RIGHT-OF-WAY AS SHOWN CROSS-HATCHED HEREON, HAS BEEN MAINTAINED CONTINUOUSLY FOR OVER FOUR (4) YEARS WITHOUT INTERRUPTION.

*Paul Kopytko* 9-2-86  
SUPERINTENDENT  
ROAD & BRIDGE DIVISION  
DATE

**SURVEYOR'S CERTIFICATE**  
I HEREBY CERTIFY THAT THIS MAINTAINED R/W MAP REPRESENTS A BOUNDARY SURVEY OF THE ROAD AS SHOWN, THAT THE SURVEY WAS RECENTLY PERFORMED UNDER MY DIRECTION, AND THAT IT IS TRUE AND CORRECT TO THE BEST OF MY KNOWLEDGE AND BELIEF, AND THAT IT MEETS THE MINIMUM TECHNICAL STANDARDS FOR LAND SURVEYING IN THE STATE OF FLORIDA (CH. 21 HH-6, F.A.C.) EFFECTIVE SEPT. 1, 1981.

DATE OF SURVEY: 9-10-86

*E.R. Emerson* 17 Sept 86  
E. R. EMERSON, COUNTY SURVEYOR  
PROFESSIONAL LAND SURVEYOR NO. 1867  
STATE OF FLORIDA  
1301 CATTLEMEN ROAD  
SARASOTA, FLORIDA 33582

- LEGEND**
- — Nail & Disk Set
  - — Nail & Disk Fnd.
  - — I.R. Set With Red Cap Stamped County R/W PLS 1867
  - — I.R. Fnd.
  - — R.R. Spike Set
  - — R.R. Spike Fnd.
  - — 1" x 2" Hub Set
  - — 1" x 2" Hub Fnd.
  - — Conc. Man. Set
  - — Water Valve
  - — Utility Pole
  - — G.T. & TV. Cable Box
  - — G.T. Manhole
  - — Light Pole
  - — Fire Hydrant
  - — Guy Wire

SARASOTA COUNTY TRANSPORTATION DEPARTMENT  
ENGINEERING DIVISION, CADASTRAL SECTION

**MAINTAINED RIGHT OF WAY MAP**

VAMO WAY  
VAMO DR. EASTERLY TO U.S. 41

DRAWN	PJB	7-24-86	SURVEY	<i>Jim Greenwell</i>	9-17-86
CHECKED	<i>P.R.B.</i>	8-22-86	DATE		
COMPARED	<i>J.R.I.</i>	9-16-86	DATE		
REF.	F.B. 297 PG. 17-22		DATE		

SCALE 1" = 50' PROJECT NO. 8631 SHEET 1 OF 1

B.C.C. RESO: R86-456 O.R.B. 1889, PG. 1411