

SCALE = 100'

END R/W JOB
EQUATION:
STA 127+48.903 & SURVEY "BK" =
STA 127+48.903 & 13120-2506 "AHD"

BEARING NOTE:
BEARINGS ARE FLORIDA PLANE
COORDINATE SYSTEM.

UTILITY OWNERS
POWER..... PEACE RIVER ELECT COOP, INC.
GAS..... FLA. GAS TRANSMISSION CO
POWER..... FLA. POWER & LIGHT CO.
TELEPHONE..... GEN. TELE. CO.

KEY MAP
&
INSERT

BEGIN R/W JOB
EQUATION:
STA 174+81.83 & 17120-2503 BK
STA 100+51.83 & SURVEY AND.

EQUATION:
STA 115+04.55 & SURVEY =
PC STA 189+04.55 & 1712-(102) 2104

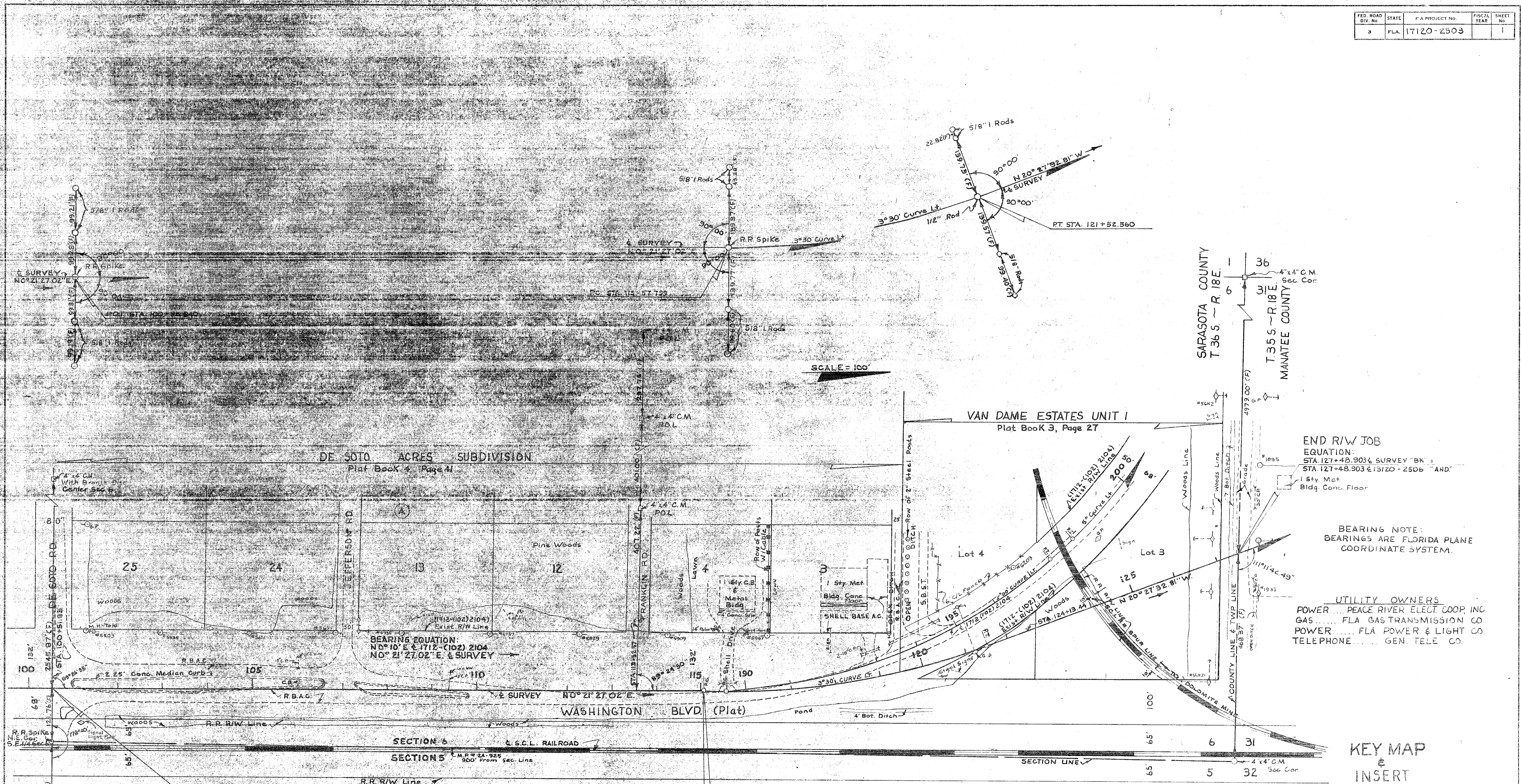
CURVE DATA
PI. STA. 118+58.494
A: 20°48'59.83" Lt.
D: 3°30'
T: 300.695'
L: 594.761'
R: 1637.022'
PC STA = 115+57.799
PT STA = 121+52.560

Exist. 1712 (102) 2104
CURVE DATA
PI. STA. 193+51.71
A: 42°38' Lt.
D: 5°00'
T: 447.16'
L: 852.67'
R: 1145.92'
PC STA 189+04.55
PT STA 197+57.22

PI. STA. 203+24.96
A: 47°00' Lt.
D: 5°00'
T: 498.26'
L: 940.00'
R: 1145.92'
PC STA 198+26.70
PT STA 207+66.70

LAND TIES PLOTTED FROM FB #891874
TOPOG PLOTTED FROM FB #898245-A

STATE OF FLORIDA DEPARTMENT OF TRANSPORTATION			
RIGHT OF WAY MAP			
STATE ROAD No. 683	SARASOTA COUNTY		
DRAWN BY	DATE	APPROVED BY	DATE
R.B.D.	9-18-73	<i>[Signature]</i>	
TRACED BY	DATE	CHECKED BY	DATE
R.B.D.	9-20-73	C.K.	5-7-74
CHECKED BY	DATE	COMPARED	
INDEXED			
REVISION	BY	DATE	
SECTION 17120-2503			SHEET 1 OF 1



SCALE = 100'

END R/W JOB
EQUATION:
STA 127+48.903 & SURVEY "BK"
STA 127+48.903 & 13120-2506 "AND"

BEARING NOTE:
BEARINGS ARE FLORIDA PLANE
COORDINATE SYSTEM.

UTILITY OWNERS
POWER..... PEACE RIVER ELECT. COOP. INC.
GAS..... FLA. GAS TRANSMISSION CO.
POWER..... FLA. POWER & LIGHT CO.
TELEPHONE..... GEN. TELE. CO.

KEY MAP
&
INSERT

BEGIN R/W JOB
EQUATION:
STA 174+51.93 & 17120-2503 BK
STA 100+51.93 & SURVEY AND.

EQUATION:
STA 115+04.55 & SURVEY =
PC STA. 109+04.55 & 1712-(102) 2104

CURVE DATA		Exist. 1712 (102) 2104 CURVE DATA	
PI. STA. 118+58.494	PI. STA. 193+51.71	PI. STA. 203+24.96	
Δ = 20°48'59.83" Lt.	Δ = 42°38' Lt.	Δ = 47°00' Lt.	
D = 3°30'	D = 5°00'	D = 5°00'	
T = 300.695'	T = 447.16'	T = 498.26'	
L = 594.761'	L = 852.67'	L = 940.00'	
R = 1637.022'	R = 1145.92'	R = 1145.92'	
PC STA = 115+57.799	PC STA. 189+04.55	PC STA. 198+26.70	
PT STA = 121+52.560	PT STA. 197+57.22	PT STA. 207+66.70	

LAND TIES PLOTTED FROM FB #931874
TOPOG PLOTTED FROM FB #838543-A

STATE OF FLORIDA
DEPARTMENT OF TRANSPORTATION

RIGHT OF WAY MAP

STATE ROAD No. 683 SARASOTA COUNTY

DATE	APPROVED BY	DATE
19-1873		

DRAWN R.B.D. 19-1873