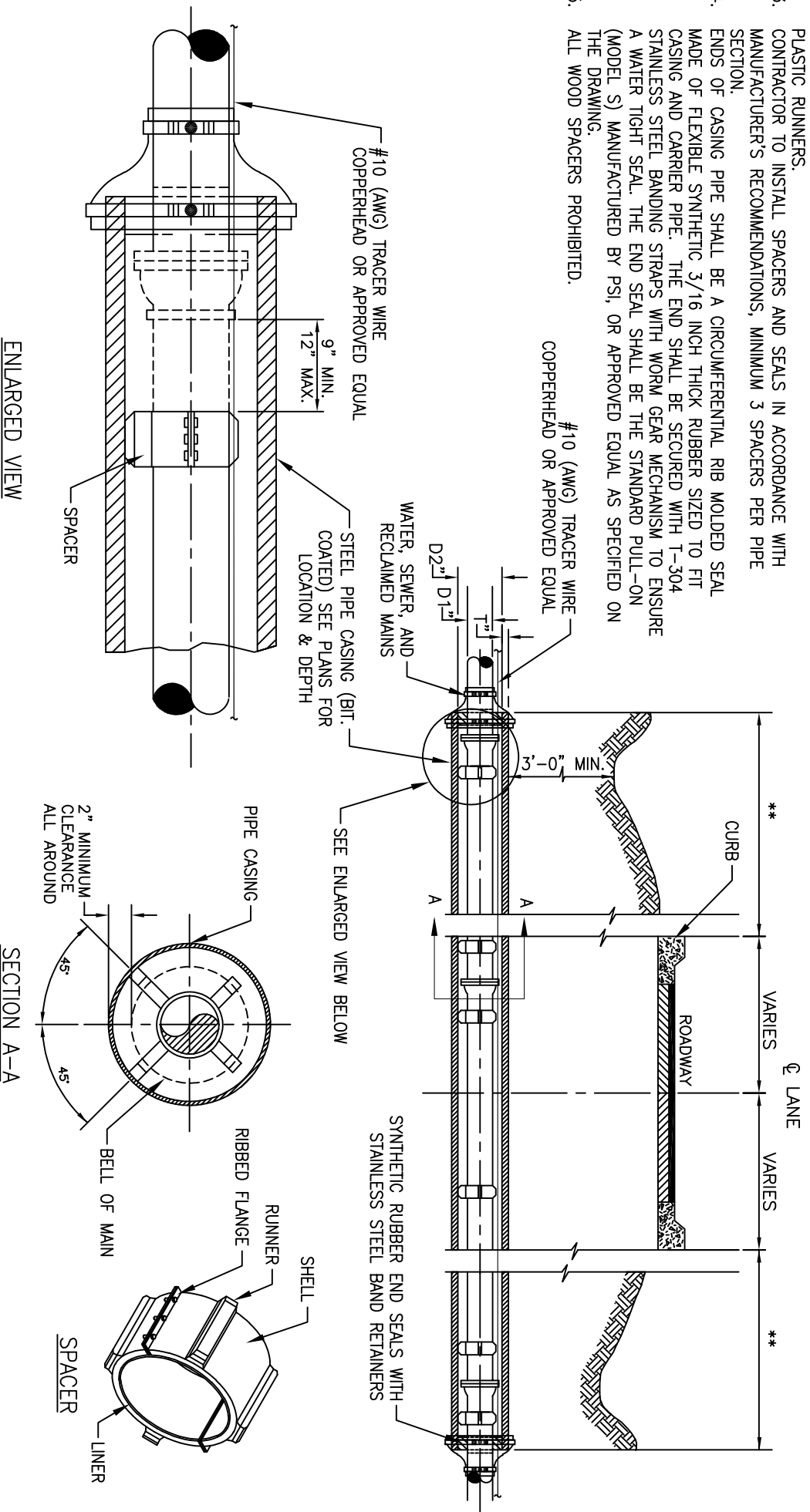


**NOTES:**

- \*\* WITH CURB - 5 FEET MINIMUM STATE ROADS.  
3 FEET MINIMUM COUNTY ROADS.
- W/O CURB - 8 FEET MINIMUM STATE ROADS.  
4 FEET MINIMUM COUNTY ROADS.

1. ALL PIPING WITHIN THE CASING SHALL BE RESTRAINED JOINT PIPE.
2. 2 PIECE STAINLESS STEEL SPACERS 12 INCH LONG WITH 2 INCH WIDE PLASTIC RUNNERS.
3. CONTRACTOR TO INSTALL SPACERS AND SEALS IN ACCORDANCE WITH MANUFACTURER'S RECOMMENDATIONS, MINIMUM 3 SPACERS PER PIPE SECTION.
4. ENDS OF CASING PIPE SHALL BE A CIRCUMFERENTIAL RIB MOLDED SEAL MADE OF FLEXIBLE SYNTHETIC 3/16 INCH THICK RUBBER SIZED TO FIT CASING AND CARRIER PIPE. THE END SHALL BE SECURED WITH T-304 STAINLESS STEEL BANDING STRAPS WITH WORM GEAR MECHANISM TO ENSURE A WATER TIGHT SEAL. THE END SEAL SHALL BE THE STANDARD PULL-ON (MODEL S) MANUFACTURED BY PSI, OR APPROVED EQUAL AS SPECIFIED ON THE DRAWING.
5. ALL WOOD SPACERS PROHIBITED.



N.T.S.