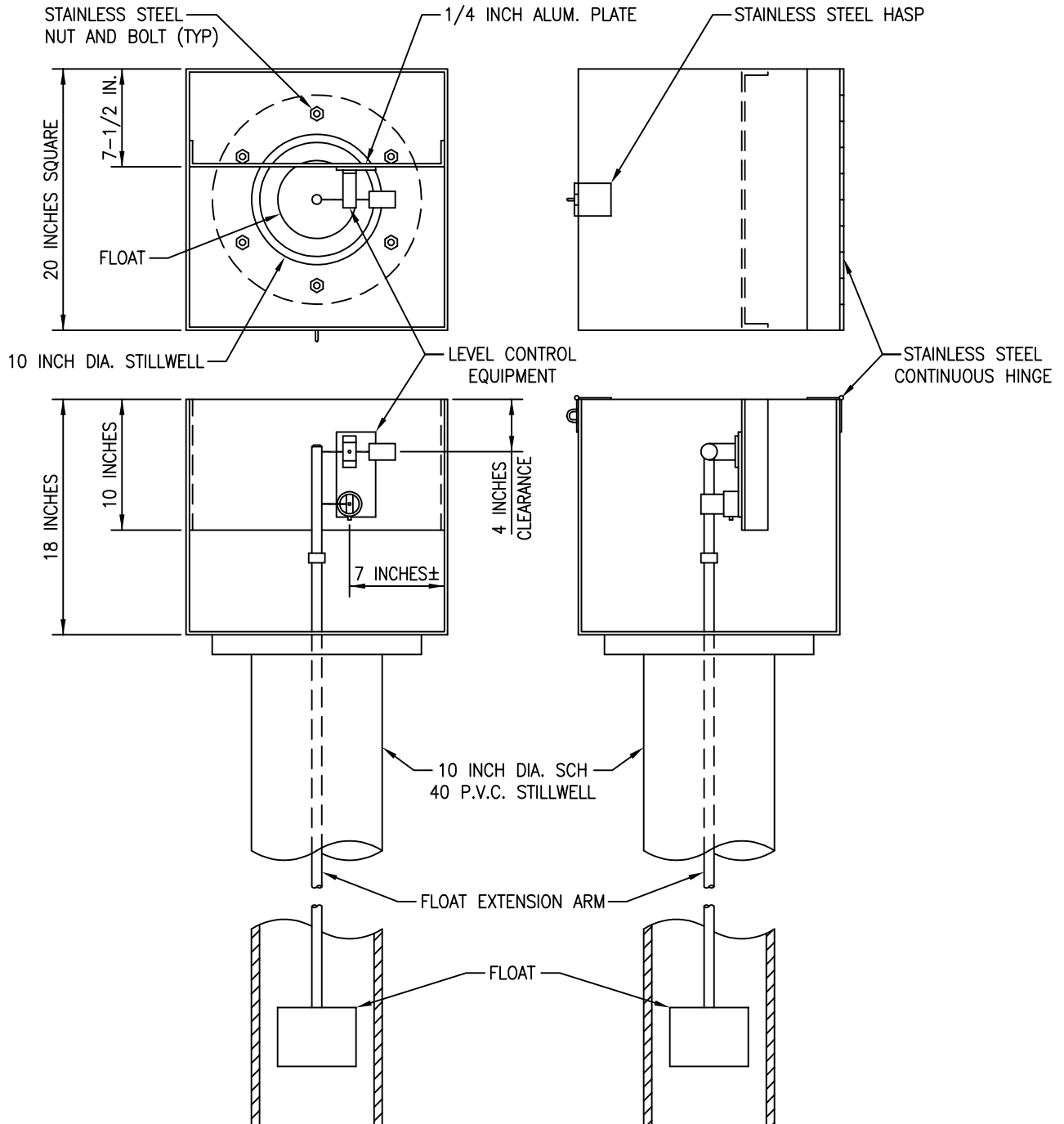


**NOTES:**

1. EQUIPMENT ENCLOSURE MATERIAL TO BE 1/4 INCH ALUMINUM WITH CONTINUOUS SEAM WELDS.
2. ALL HARDWARE TO BE STAINLESS STEEL.
3. LEVEL CONTROL EQUIPMENT TO BE MOUNTED TO MAINTAIN FLOAT CENTERED IN STILLWELL.

TOP VIEW



SECTION

N.T.S.

RECLAIM\_DWG\_NO.7.DWG 03/2020