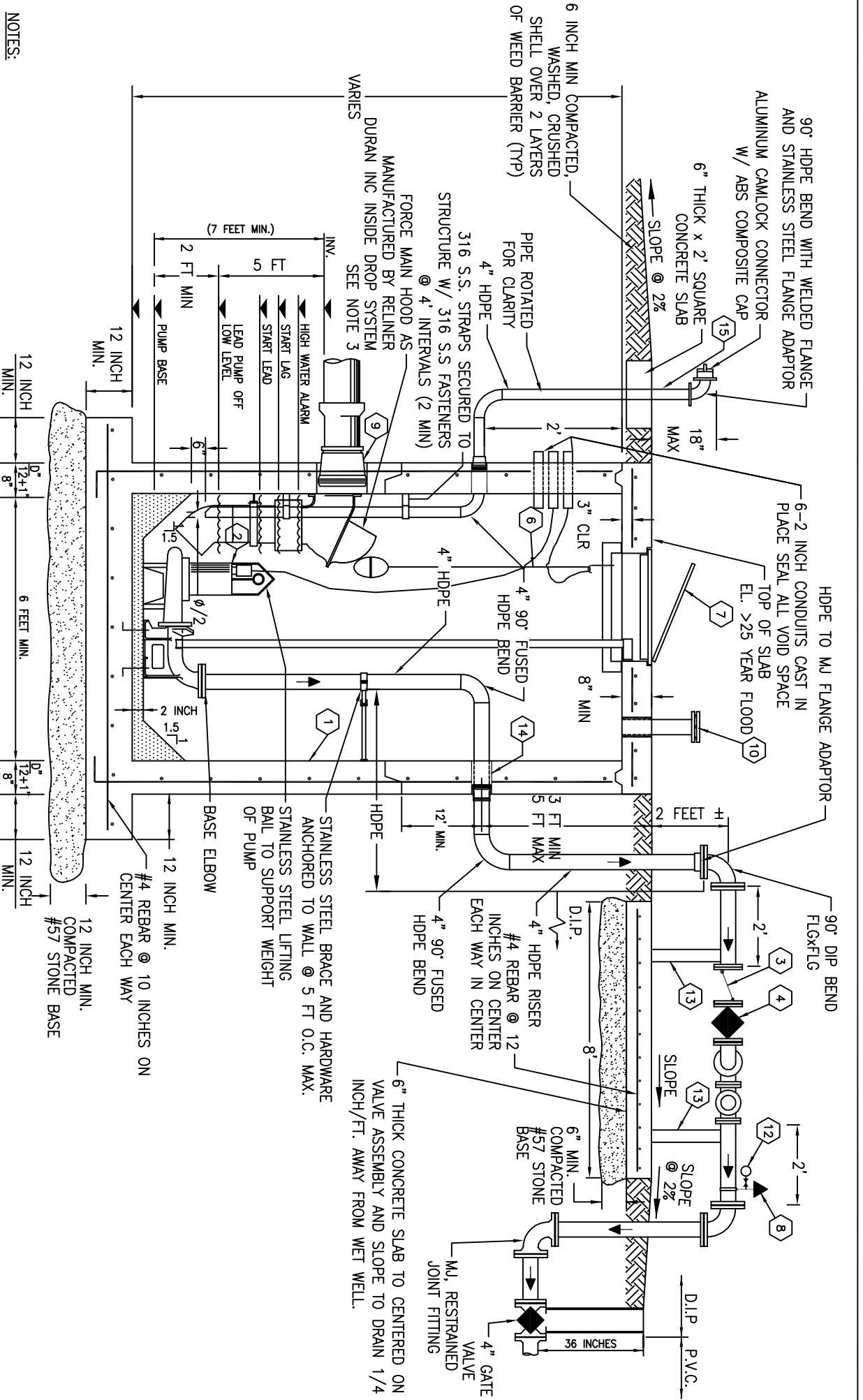


LIFT STATION SECTION A-A

1. THE SARASOTA COUNTY PUBLIC UTILITY LIFT STATION SUPERVISOR SHALL FIELD DETERMINE
2. LOCATION OF THE EMERGENCY PUMP-OUT WITH THE CONTRACTOR AND ENGINEER OF RECORD
3. BASE ELBOW AND INTERIOR DIP TO BE EPOXY LINED AND COATED.
4. INSTALLED ONLY WHEN DIRECTED BY SARASOTA COUNTY UTILITY DEPARTMENT.
5. LIFT STATIONS TYPICALLY INCLUDE MIN. 4-INCH HDPE RISERS. HOWEVER, RISER DIAMETER MAY BE INCREASED ON A CASE BY CASE BASIS.
6. STAINLESS STEEL BASE PLATE SHALL BE INSTALLED UNDER BASE ELBOWS.
7. HDPE PIPING AND FITTINGS TO BE DR 9 OR DR 11 AS DIRECTED BY SARASOTA COUNTY UTILITY DEPARTMENT.

NOTES:



N.T.S.