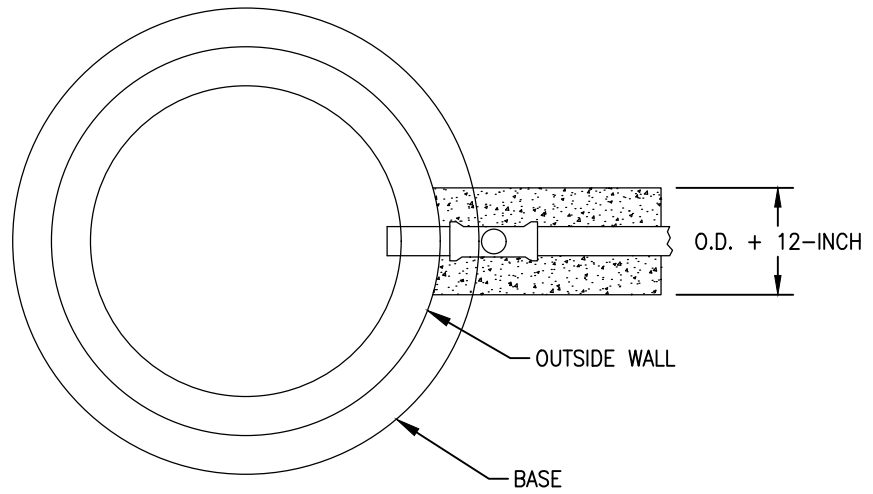
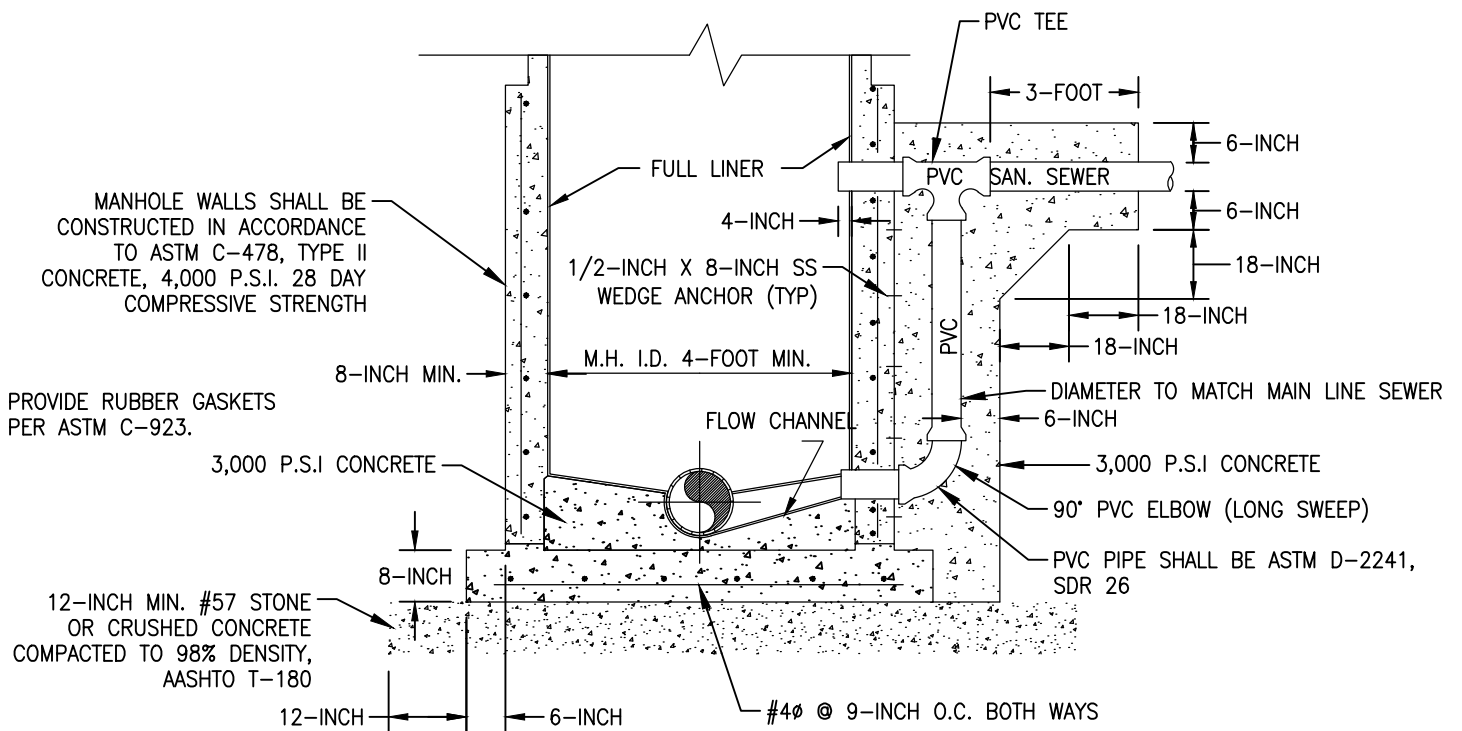


NOTES:

1. A PRECAST CONCRETE OUTSIDE DROP MAY BE USED IN LIEU OF THE CAST IN PLACE ENCASUREMENT SHOWN BELOW.



PLAN



SECTION

NOTES:

1. THIS IS A TURBULENT FLOW MANHOLE AND SHALL BE LINED WITH AN APPROVED LINER AND A HEAVY-DUTY COMPOSITE FRAME & COVER INSTALLED.
2. DROP MANHOLES ARE REQUIRED WHEN THE VERTICAL DISTANCE BETWEEN THE LOWEST EXISTING MANHOLE INVERT AND THE HIGHEST PIPE INVERT IS 2 FEET OR GREATER.
3. MANHOLE SHALL BE AASHTO H-20 RATED, WHEN LOCATED WITHIN THE RIGHT OF WAY.

N.T.S.

SEWER_DWG_NO-30.DWG 03/2020