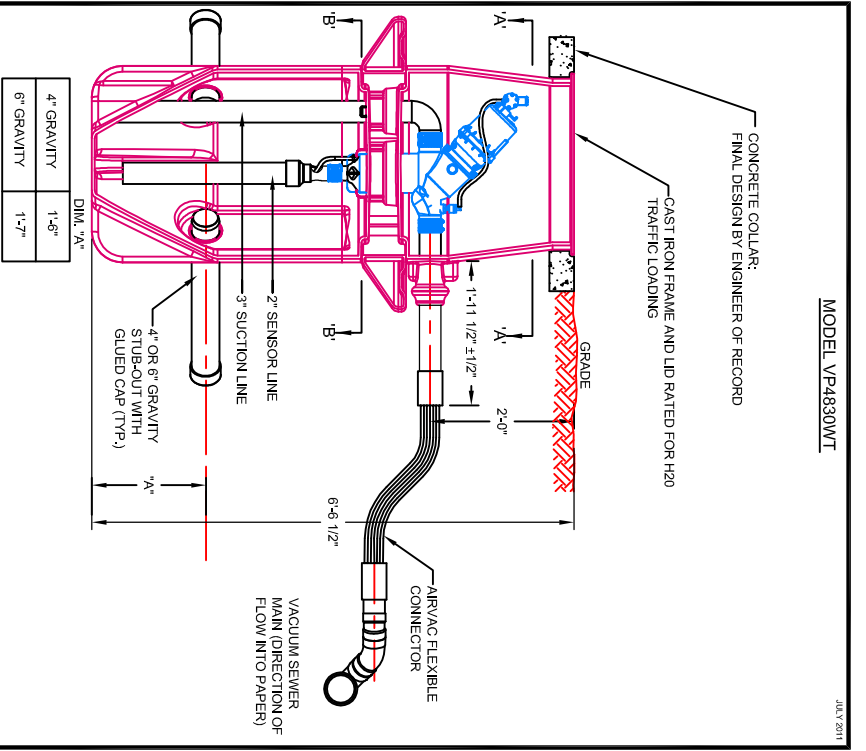
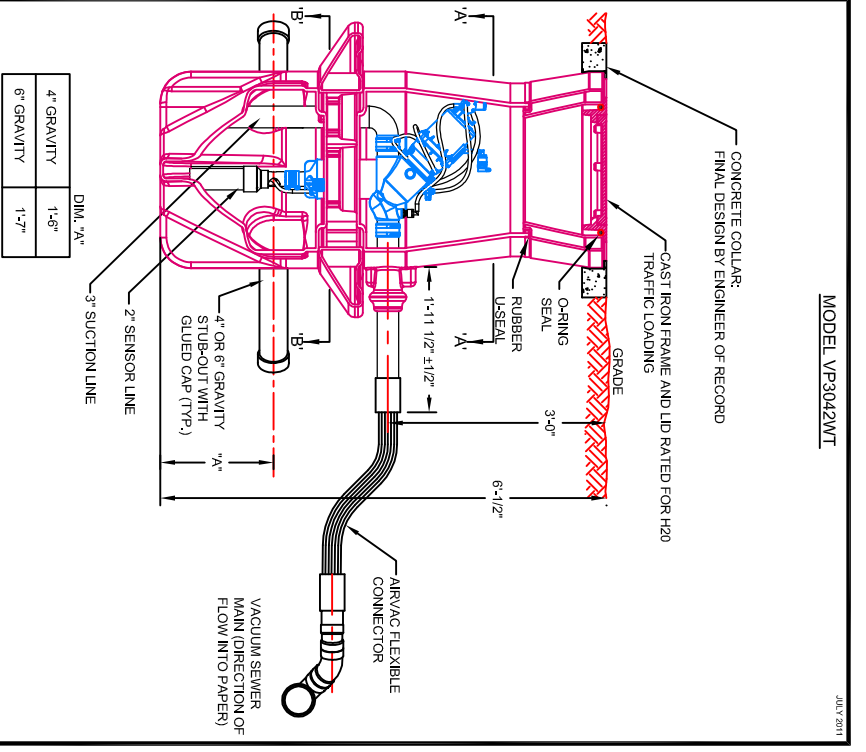


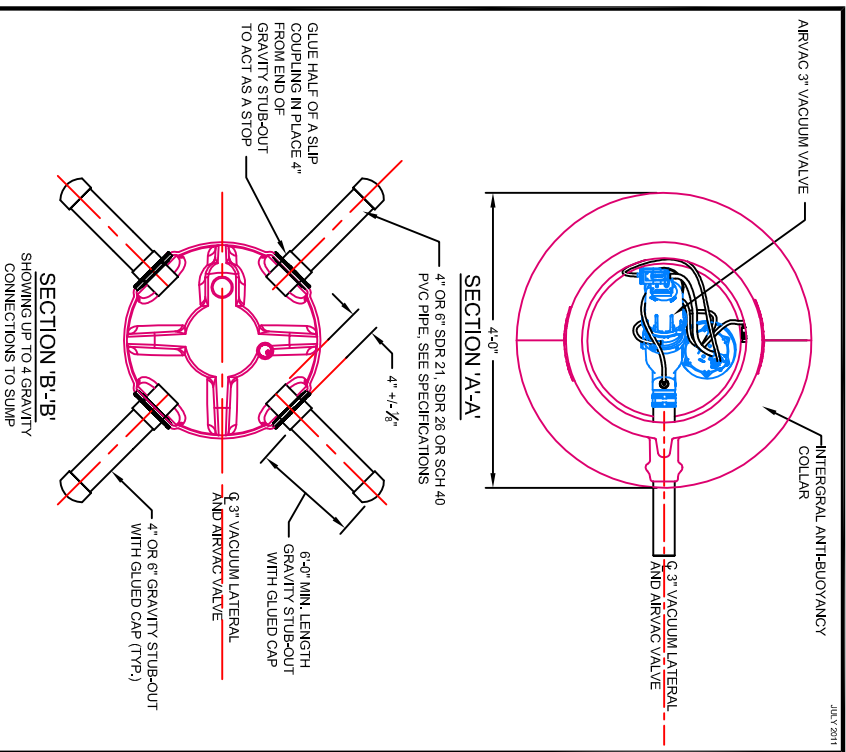
AIRVAC 1 PIECE VALVE PIT - 5' DEEP
 MODEL VP3030WT
 FINAL DESIGN BY ENGINEER OF RECORD
 GRADE
 TRAFFIC IRON LOADING
 CONCRETE COLLAR
 CAST IRON FRAME AND LID RATED FOR H20
 DIM. "A"
 4" GRAVITY 1-5"
 6" GRAVITY 1-7"
 2" SENSOR LINE
 3" SUCTION LINE
 AIRVAC FLEXIBLE CONNECTOR
 VACUUM SEWER MAIN (DIRECTION OF FLOW INTO PAPER)
 4" OR 6" GRAVITY STUB-OUT WITH GLED CAP (TYP.)
 1-11 1/2" ± 1/2"
 2'-0"
 5'-1/2"
 4" OR 6" GRAVITY STUB-OUT WITH GLED CAP (TYP.)
 1" N.T.S.



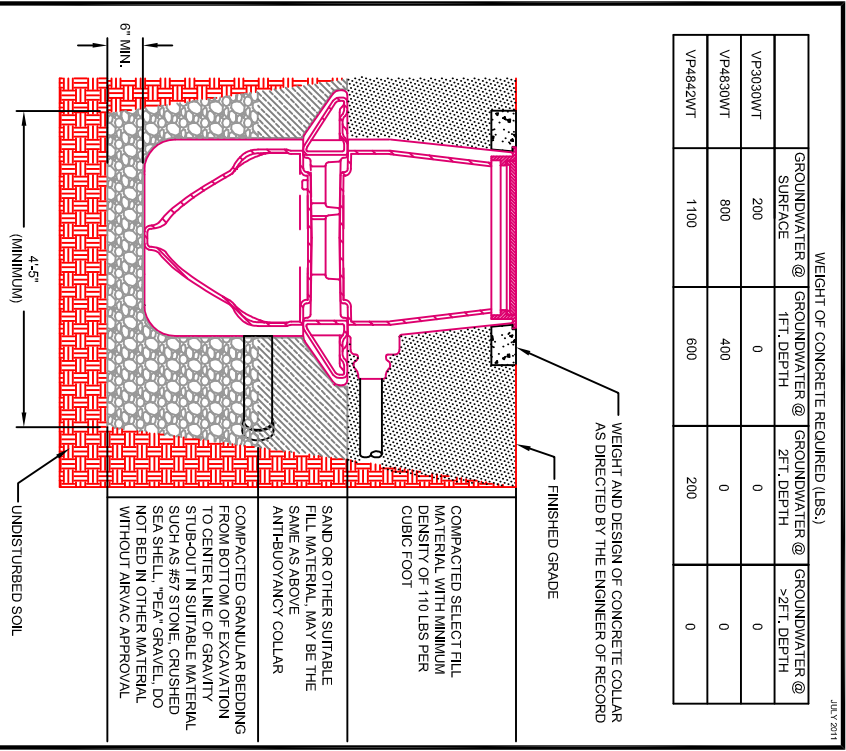
AIRVAC 1 PIECE VALVE PIT - 6-1/2' DEEP
 MODEL VP4830WT
 FINAL DESIGN BY ENGINEER OF RECORD
 GRADE
 TRAFFIC IRON LOADING
 CONCRETE COLLAR
 CAST IRON FRAME AND LID RATED FOR H20
 DIM. "A"
 4" GRAVITY 1-5"
 6" GRAVITY 1-7"
 2" SENSOR LINE
 3" SUCTION LINE
 AIRVAC FLEXIBLE CONNECTOR
 VACUUM SEWER MAIN (DIRECTION OF FLOW INTO PAPER)
 4" OR 6" GRAVITY STUB-OUT WITH GLED CAP (TYP.)
 1-11 1/2" ± 1/2"
 2'-0"
 6-6 1/2"
 4" OR 6" GRAVITY STUB-OUT WITH GLED CAP (TYP.)
 1" N.T.S.



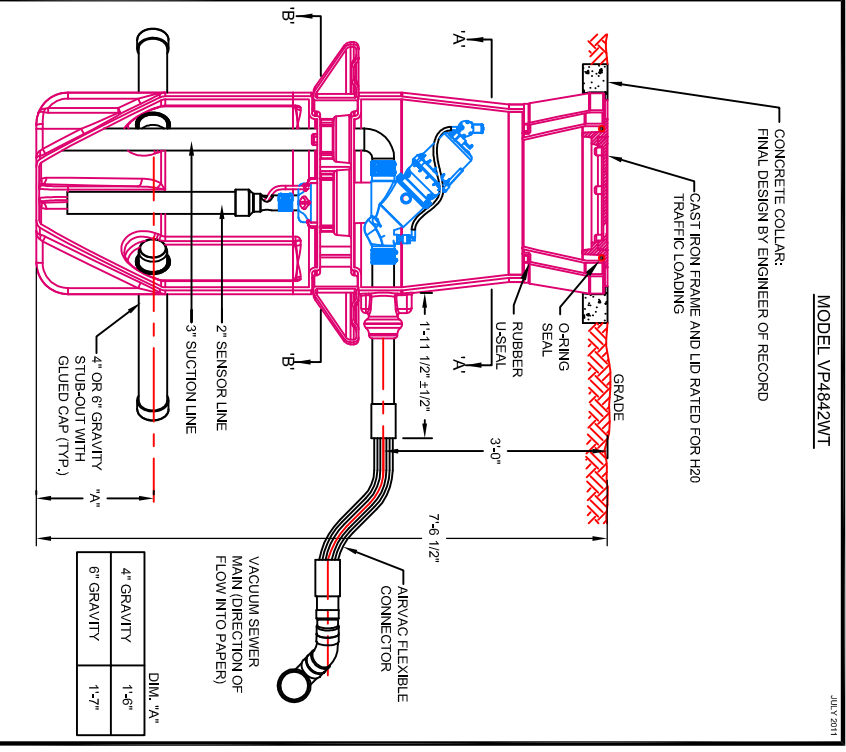
AIRVAC 1 PIECE VALVE PIT - 5' DEEP W/ 1FT. EXTENSION
 MODEL VP4842WT
 FINAL DESIGN BY ENGINEER OF RECORD
 GRADE
 TRAFFIC IRON LOADING
 CONCRETE COLLAR
 CAST IRON FRAME AND LID RATED FOR H20
 DIM. "A"
 4" GRAVITY 1-5"
 6" GRAVITY 1-7"
 2" SENSOR LINE
 3" SUCTION LINE
 AIRVAC FLEXIBLE CONNECTOR
 VACUUM SEWER MAIN (DIRECTION OF FLOW INTO PAPER)
 4" OR 6" GRAVITY STUB-OUT WITH GLED CAP (TYP.)
 1-11 1/2" ± 1/2"
 3'-0"
 6'-1/2"
 4" OR 6" GRAVITY STUB-OUT WITH GLED CAP (TYP.)
 1" N.T.S.



**AIRVAC 3\"/>
 MODEL VP3030WT
 FINAL DESIGN BY ENGINEER OF RECORD
 GRADE
 TRAFFIC IRON LOADING
 CONCRETE COLLAR
 CAST IRON FRAME AND LID RATED FOR H20
 DIM. "A"
 4" GRAVITY 1-5"
 6" GRAVITY 1-7"
 2" SENSOR LINE
 3" SUCTION LINE
 AIRVAC FLEXIBLE CONNECTOR
 VACUUM SEWER MAIN (DIRECTION OF FLOW INTO PAPER)
 4" OR 6" GRAVITY STUB-OUT WITH GLED CAP (TYP.)
 1-11 1/2" ± 1/2"
 2'-0"
 5'-1/2"
 4" OR 6" GRAVITY STUB-OUT WITH GLED CAP (TYP.)
 1" N.T.S.**



1 PIECE VALVE PIT BEDDING AND BACKFILL
 MODEL VP3030WT
 FINAL DESIGN BY ENGINEER OF RECORD
 GRADE
 TRAFFIC IRON LOADING
 CONCRETE COLLAR
 CAST IRON FRAME AND LID RATED FOR H20
 DIM. "A"
 4" GRAVITY 1-5"
 6" GRAVITY 1-7"
 2" SENSOR LINE
 3" SUCTION LINE
 AIRVAC FLEXIBLE CONNECTOR
 VACUUM SEWER MAIN (DIRECTION OF FLOW INTO PAPER)
 4" OR 6" GRAVITY STUB-OUT WITH GLED CAP (TYP.)
 1-11 1/2" ± 1/2"
 2'-0"
 5'-1/2"
 4" OR 6" GRAVITY STUB-OUT WITH GLED CAP (TYP.)
 1" N.T.S.



AIRVAC 1 PIECE VALVE PIT - 6-1/2' DEEP W/ 1FT. EXTENSION
 MODEL VP4842WT
 FINAL DESIGN BY ENGINEER OF RECORD
 GRADE
 TRAFFIC IRON LOADING
 CONCRETE COLLAR
 CAST IRON FRAME AND LID RATED FOR H20
 DIM. "A"
 4" GRAVITY 1-5"
 6" GRAVITY 1-7"
 2" SENSOR LINE
 3" SUCTION LINE
 AIRVAC FLEXIBLE CONNECTOR
 VACUUM SEWER MAIN (DIRECTION OF FLOW INTO PAPER)
 4" OR 6" GRAVITY STUB-OUT WITH GLED CAP (TYP.)
 1-11 1/2" ± 1/2"
 3'-0"
 7'-6 1/2"
 4" OR 6" GRAVITY STUB-OUT WITH GLED CAP (TYP.)
 1" N.T.S.

AIRVAC
 VACUUM DETAIL

IN CONSIDERATION OF THE RECEIPT OF THIS DOCUMENT, THE USER AGREES NOT TO REPRODUCE OR TRANSMIT THIS DOCUMENT AND/OR THE INFORMATION THEREIN CONTAINED IN WHOLE OR IN PART OR TO SUFFER SUCH ACTION BY OTHER, FOR ANY PURPOSE EXCEPT WITH THE WRITTEN PERMISSION OF AIRVAC, INC. AND FURTHER AGREES TO SURRENDER SAME TO AIRVAC, INC. UPON DEMAND.

| NO. | REVISIONS | DATE |
|-----|--|---------|
| 1 | ADDED 5' V.P. WITH 1' EXT. | 1-15-09 |
| 2 | ADDED 6-1/2' V.P. WITH 1' EXT. | 1-24-08 |
| 3 | REVISED FLEX. CONN. DIMENSION | 1-14-08 |
| 4 | REVISED GRAVITY STUB-OUT ELEVATION | 1-29-10 |
| 5 | REVISED CONCRETE COLLAR SPECIFICATIONS | 7-22-11 |

AIRVAC
 VACUUM DETAIL

AIRVAC
 VACUUM DETAIL