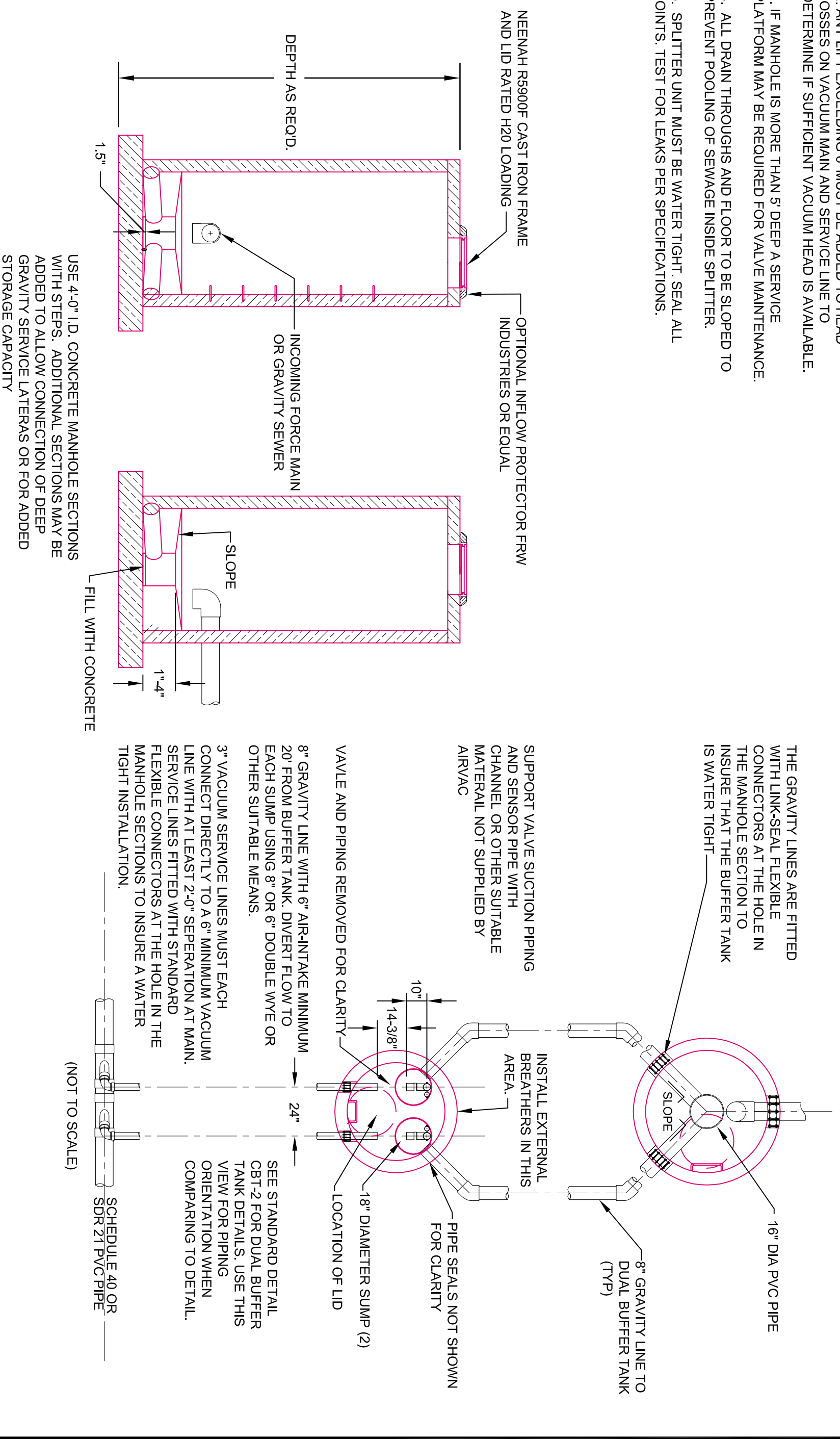
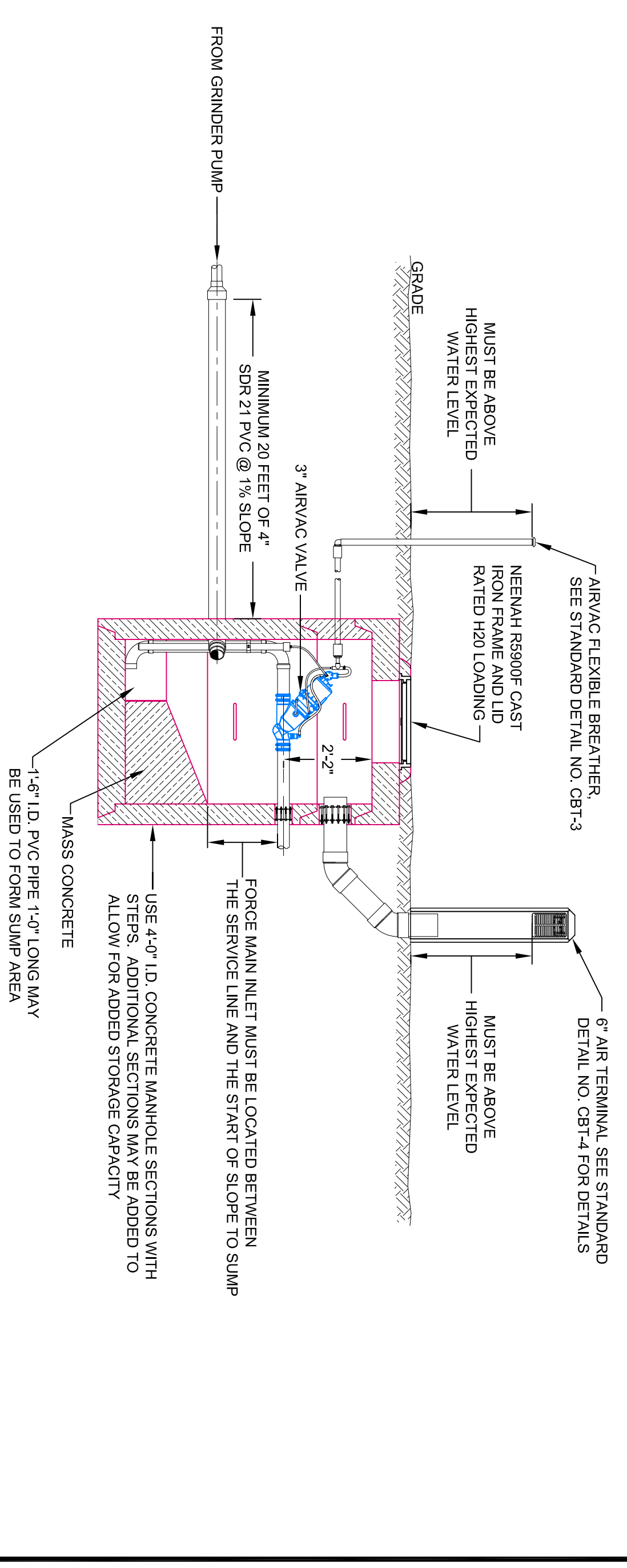


- NOTE:
1. BUFFER TANK UNIT MUST BE WATER TIGHT. SEAL ALL JOINTS WITH BUTYL SEALANT. TEST FOR LEAKS PER AIRVAC SPECIFICATIONS IN INSTALLATION MANUAL.
  2. ANY LIFT EXCEEDING 6' MUST BE ADDED TO HEAD LOSSES ON VACUUM MAIN AND SERVICE LINE TO DETERMINE IF SUFFICIENT VACUUM HEAD IS AVAILABLE.
  3. IF MANHOLE IS MORE THAN 5' DEEP A SERVICE PLATFORM MAY BE REQUIRED FOR VALVE MAINTENANCE.
  4. ALL DRAIN THROUGHS AND FLOOR TO BE SLOPED TO PREVENT POOLING OF SEWAGE INSIDE SPLITTER.
  5. SPLITTER UNIT MUST BE WATER TIGHT. SEAL ALL JOINTS. TEST FOR LEAKS PER SPECIFICATIONS.



**DOUBLE DUAL BUFFER TANK WITH SPLITTER MANHOLE** N.T.S. STANDARD DETAIL NO. CBT-9

- NOTE:
1. BREATHER DOME HEIGHT MUST BE ABOVE FLOOD LEVEL AND SHOULD BE PLACED NEXT TO A STATIONARY OBJECT.
  2. BUFFER TANK UNIT MUST BE WATER TIGHT. SEAL ALL JOINTS WITH BUTYL SEALANT. TEST FOR LEAKS PER AIRVAC SPECIFICATIONS IN INSTALLATION MANUAL.
  3. ANY LIFT EXCEEDING 6' MUST BE ADDED TO HEAD LOSSES ON VACUUM MAIN AND SERVICE LINE TO DETERMINE IF SUFFICIENT VACUUM HEAD IS AVAILABLE.



**SINGLE BUFFER TANK WITH GRINDER PUMP CONNECTED** N.T.S. STANDARD DETAIL NO. CBT-10

<p><b>AIRVAC</b><sup>®</sup> VACUUM DETAIL</p> <p>IN CONSIDERATION OF THE RECEIPT OF THIS DOCUMENT, THE RECIPIENT AGREES NOT TO REPRODUCE, COPY, USE, OR TRANSMIT THIS DOCUMENT AND/OR THE INFORMATION THEREIN CONTAINED IN WHOLE OR IN PART, OR TO SUFFER SUCH ACTION BY OTHER, FOR ANY PURPOSE EXCEPT WITH THE WRITTEN PERMISSION OF AIRVAC, INC. AND FURTHER AGREES TO SURRENDER SAME TO AIRVAC, INC. UPON DEMAND.</p>	NO.	REVISIONS	DATE	TITLE

<p><b>CONCRETE BUFFER TANK DETAILS (3) - SPECIAL APPLICATIONS</b></p>	SHEET NO.
	SD-33