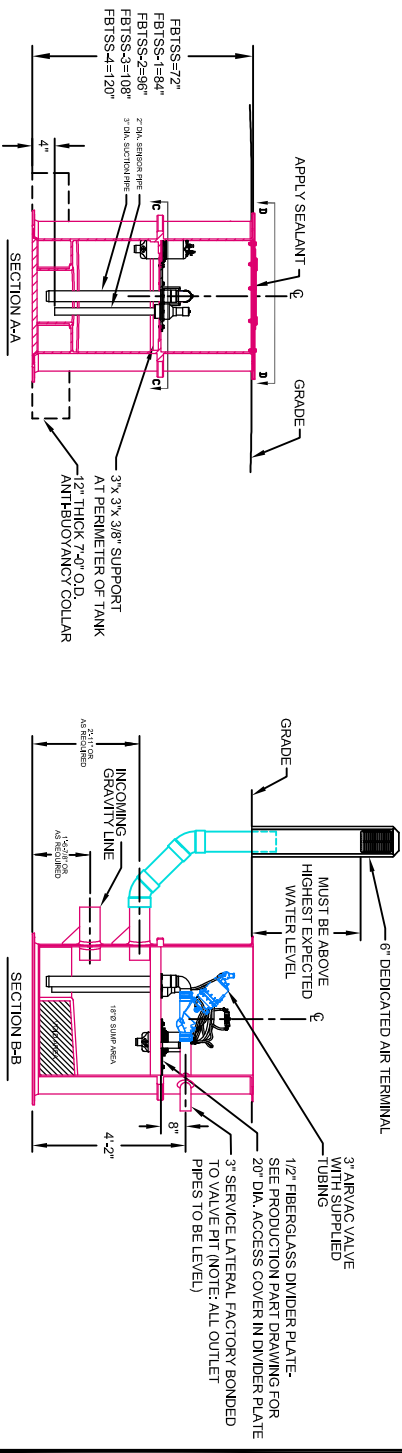
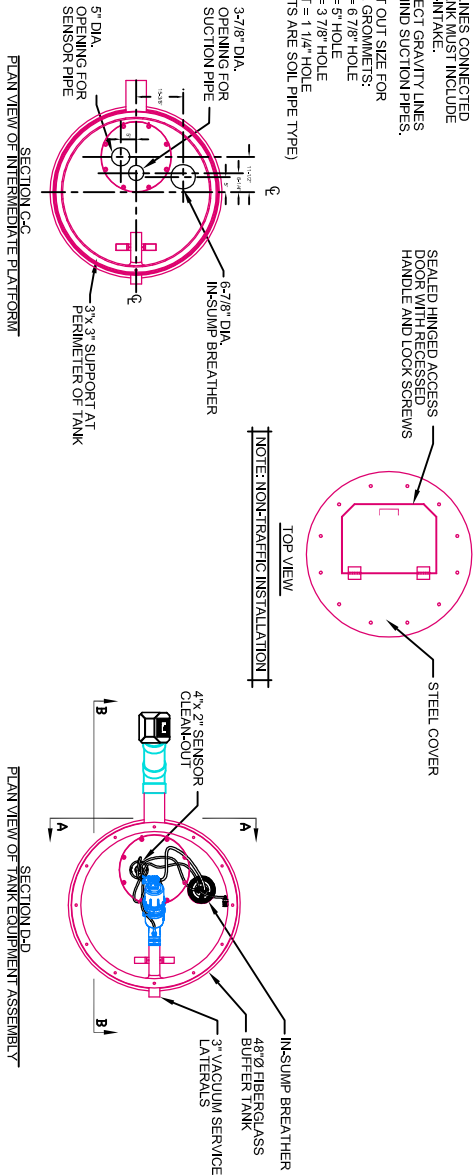
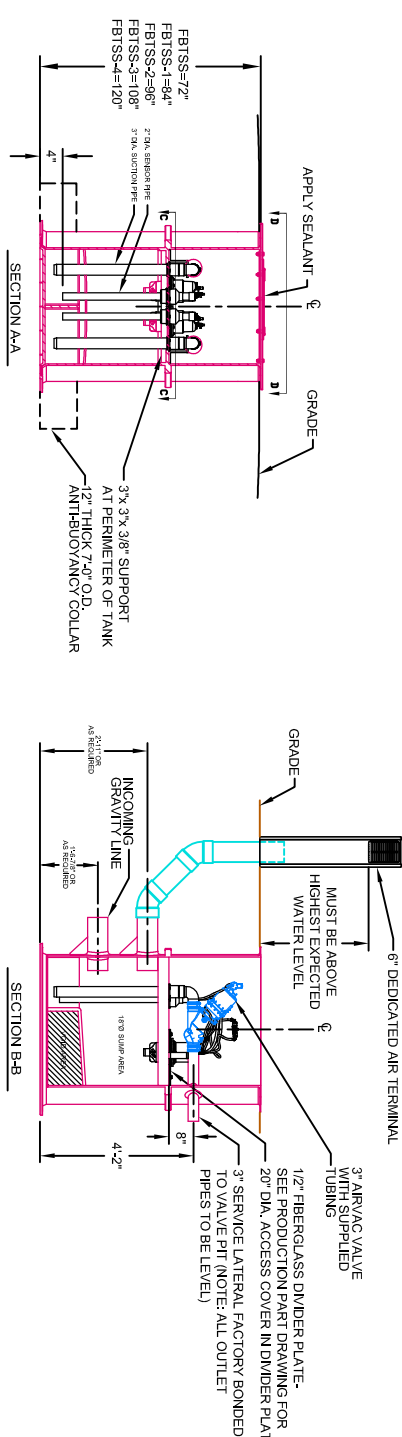
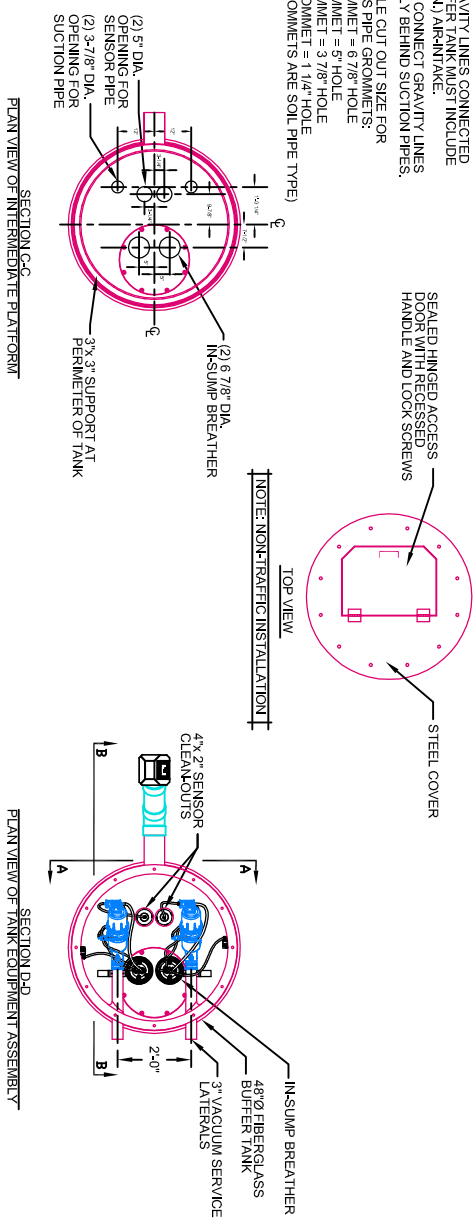


- NOTES:**
1. ALL GRAVITY LINES CONNECTED TO THE BUFFER TANK MUST INCLUDE A 4" (MIN) AIRWAKE
 2. DO NOT CONNECT GRAVITY LINES DIRECTLY BEHIND SUCTION PIPES.
 3. THE HOLE CUT OUT SIZE FOR GRAVITY LINES MUST BE 1/4" HOLE
 4. GROMMET = 5" HOLE
 - 3" GROMMET = 3 7/8" HOLE
 - 3/4" GROMMET = 1 1/4" HOLE (ALL GROMMETS ARE SOIL PIPE TYPE)



FIBERGLASS SINGLE BUFFER TANK WITH INTERNAL BREATHER
N.T.S. STANDARD DETAIL NO. FB1-1

- NOTES:**
1. ALL GRAVITY LINES CONNECTED TO THE BUFFER TANK MUST INCLUDE A 4" (MIN) AIRWAKE
 2. DO NOT CONNECT GRAVITY LINES DIRECTLY BEHIND SUCTION PIPES.
 3. THE HOLE CUT OUT SIZE FOR GRAVITY LINES MUST BE 1/4" HOLE
 4. GROMMET = 5" HOLE
 - 3" GROMMET = 3 7/8" HOLE
 - 3/4" GROMMET = 1 1/4" HOLE (ALL GROMMETS ARE SOIL PIPE TYPE)



FIBERGLASS DUAL BUFFER TANK WITH INTERNAL BREATHER
N.T.S. STANDARD DETAIL NO. FB1-2

		IN CONSIDERATION OF THE RECEIPT OF THIS DOCUMENT THE RECIPIENT AGREES NOT TO REPRODUCE, COPY, USE, OR TRANSMIT THIS DOCUMENT AND/OR THE INFORMATION THEREIN CONTAINED IN WHOLE OR IN PART, OR TO SUFFER SUCH ACTION BY OTHER, FOR ANY PURPOSE EXCEPT WITH THE WRITTEN PERMISSION OF AIRVAC, INC. AND FURTHER AGREES TO SURRENDER SAME TO AIRVAC, INC. UPON DEMAND.	
NO.	1	REVISED TO NEW B.T. DESIGN	5-20-08
REVISIONS			

TITLE	FIBERGLASS BUFFER TANK DETAILS (1)
SHEET NO.	SD-34