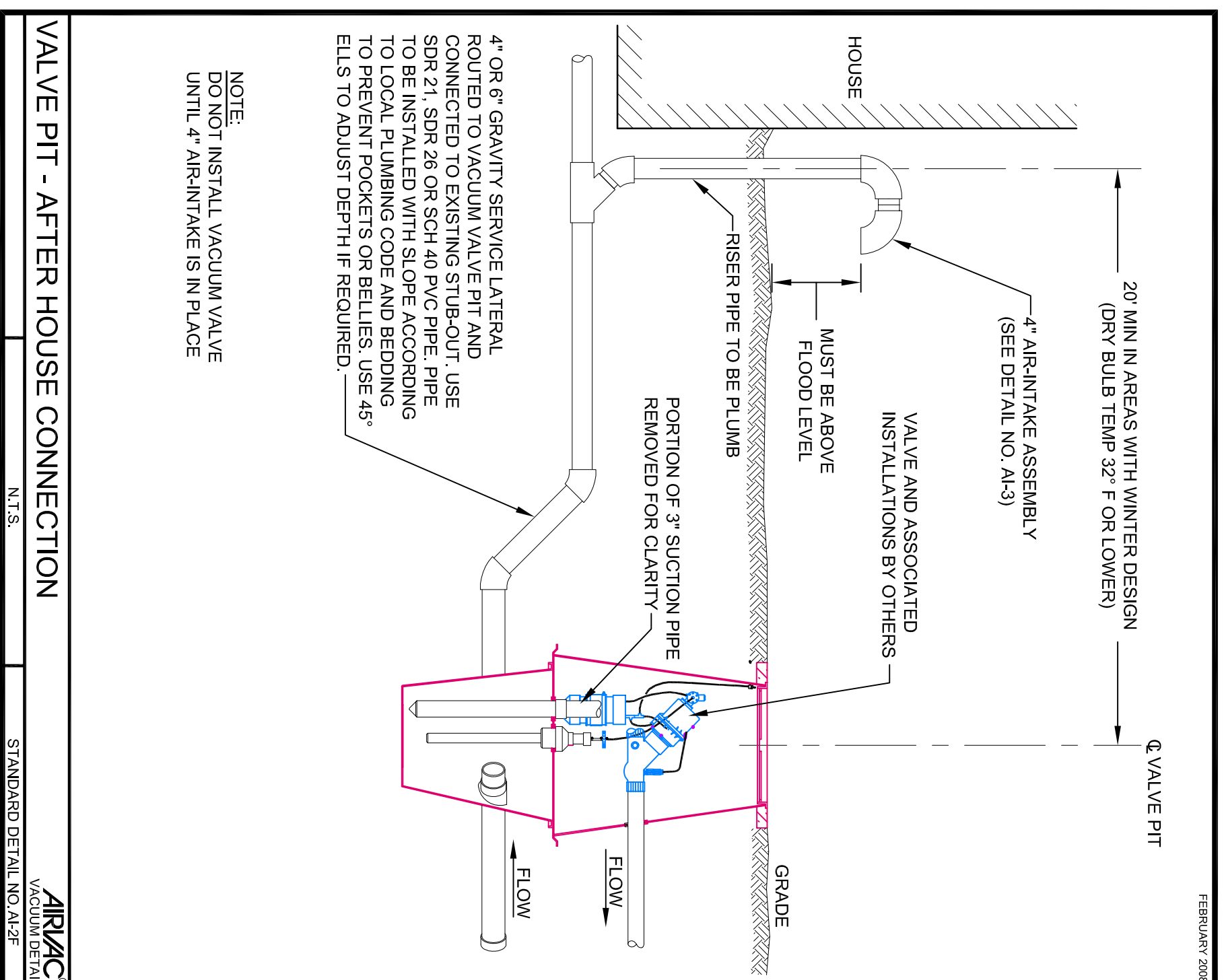


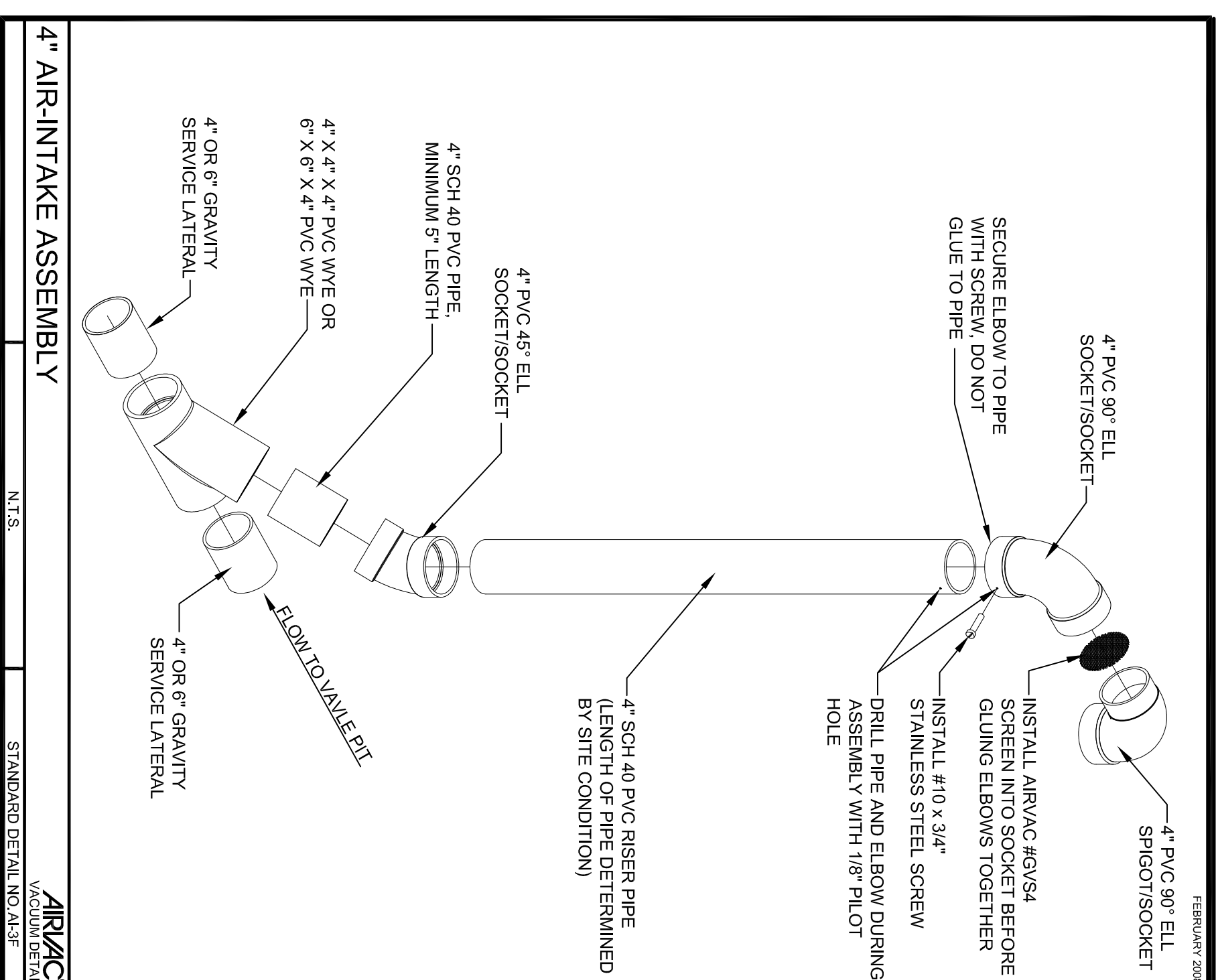
VALVE PIT - PRIOR TO HOUSE CONNECTION

N.T.S. STANDARD DETAIL NO. A1-1E



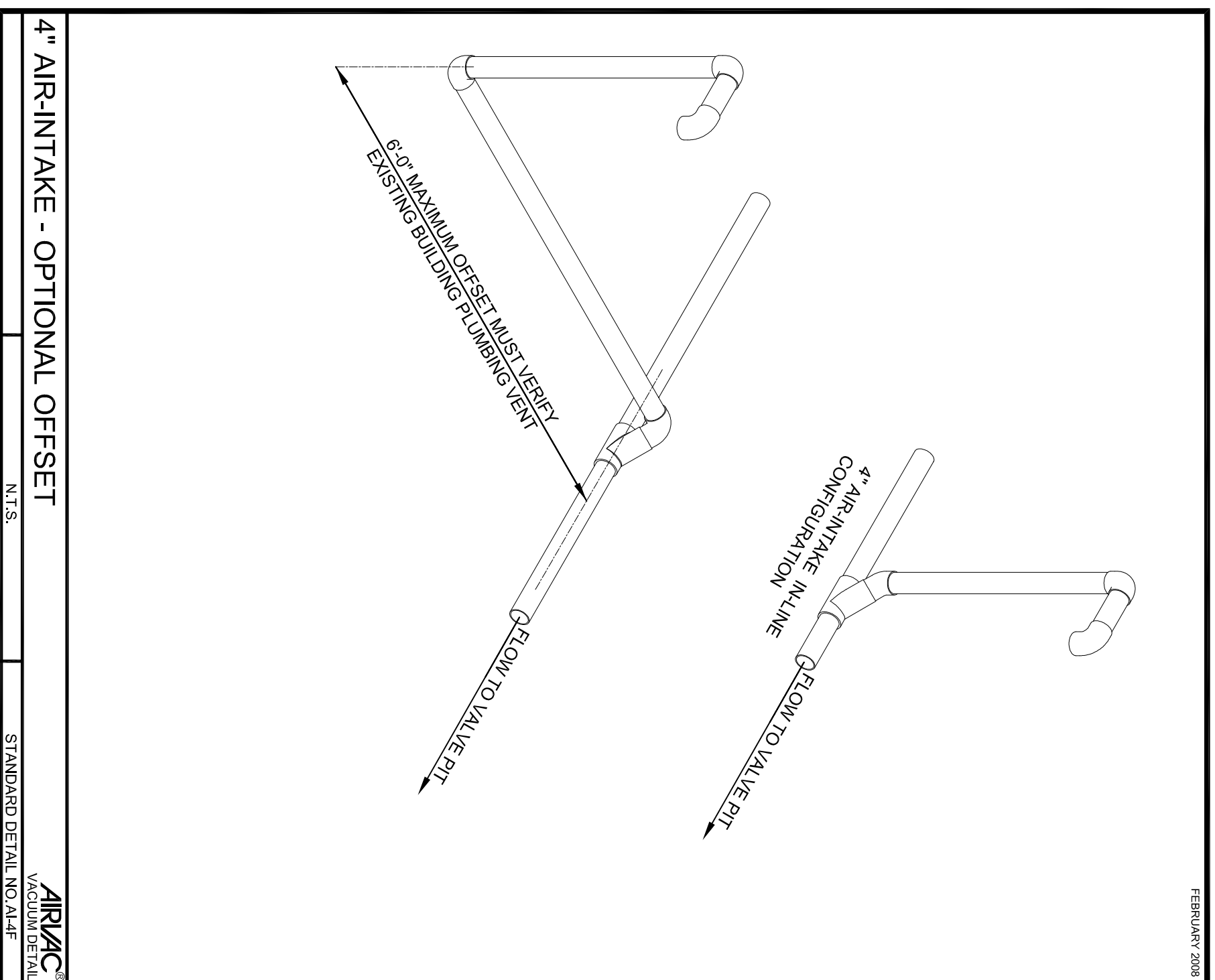
VALVE PIT - AFTER HOUSE CONNECTION

N.T.S. STANDARD DETAIL NO. A1-2E



4" AIR-INTAKE ASSEMBLY

N.T.S. STANDARD DETAIL NO. A1-3E



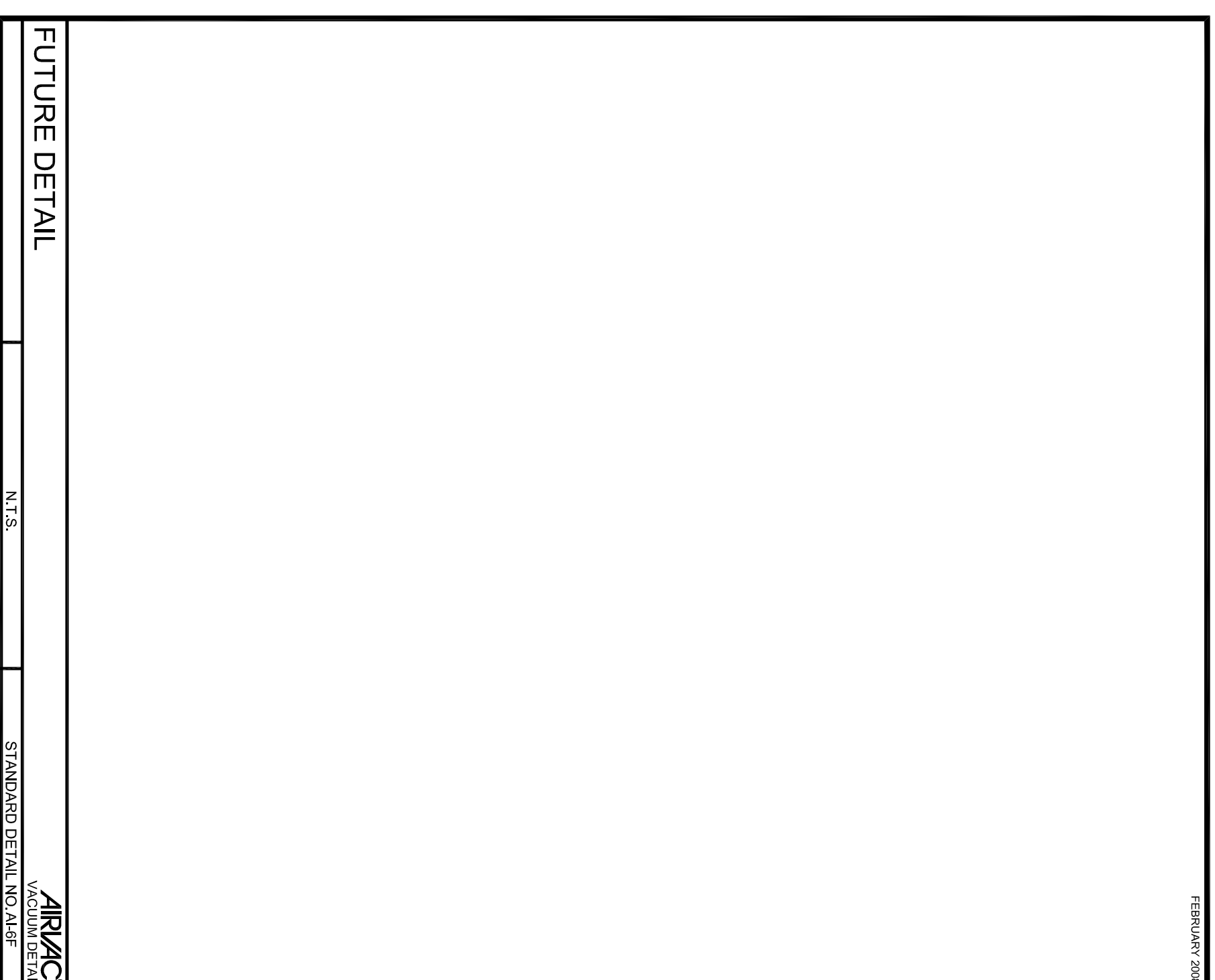
4" AIR-INTAKE - OPTIONAL OFFSET

N.T.S. STANDARD DETAIL NO. A1-4E



FUTURE DETAIL

N.T.S. STANDARD DETAIL NO. A1-5E



FUTURE DETAIL

N.T.S. STANDARD DETAIL NO. A1-6E

AIRVAC
VACUUM DETAIL

NO. REVISIONS

DATE

TITLE

AIR-INTAKE DETAILS - 3 PIECE PITS

SHEET NO. SD-4F

IN CONSIDERATION OF THE RECEIPT OF THIS DOCUMENT, THE RECIPIENT AGREES NOT TO REPRODUCE, COPY, USE, OR TRANSMIT THIS DOCUMENT AND/OR THE INFORMATION THEREIN CONTAINED IN WHOLE OR IN PART, OR TO SUFFER SUCH ACTION BY OTHER, FOR ANY PURPOSE EXCEPT WITH THE WRITTEN PERMISSION OF AIRVAC, INC. AND FURTHER AGREES TO SURRENDER SAME TO AIRVAC, INC. UPON DEMAND.