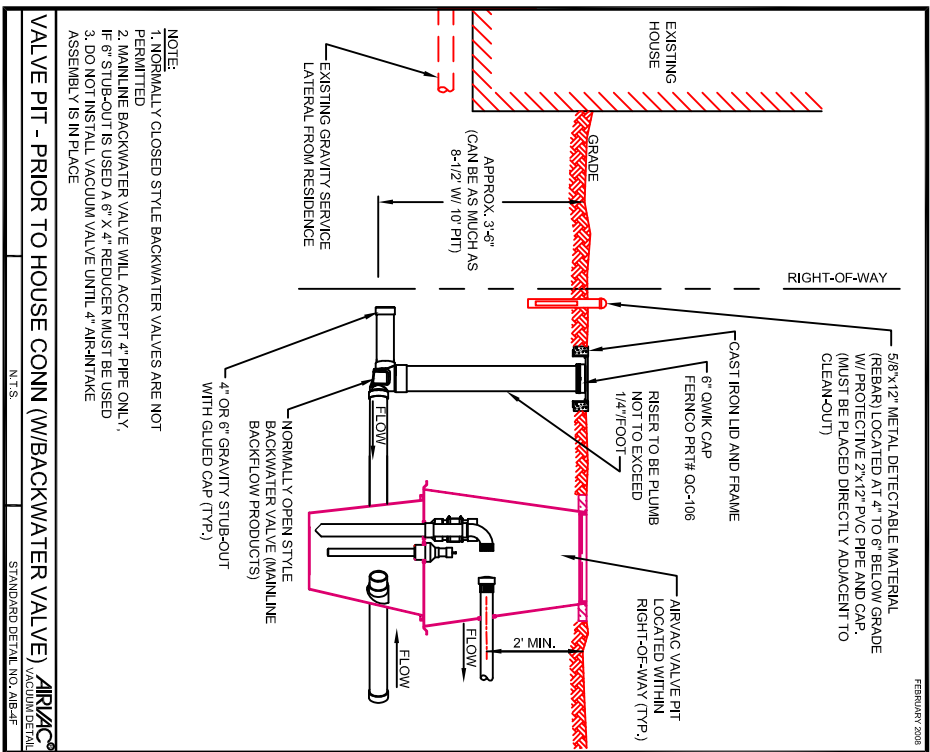


NOTE:
1. NORMALLY CLOSED STYLE BACKWATER VALVES ARE NOT PERMITTED
2. MAINLINE BACKWATER VALVE WILL ACCEPT 4" PIPE ONLY, IF 6" STUB-OUT IS USED A 6" X 4" REDUCER MUST BE USED

4" AIR-INTAKE W/BACKWATER VALVE

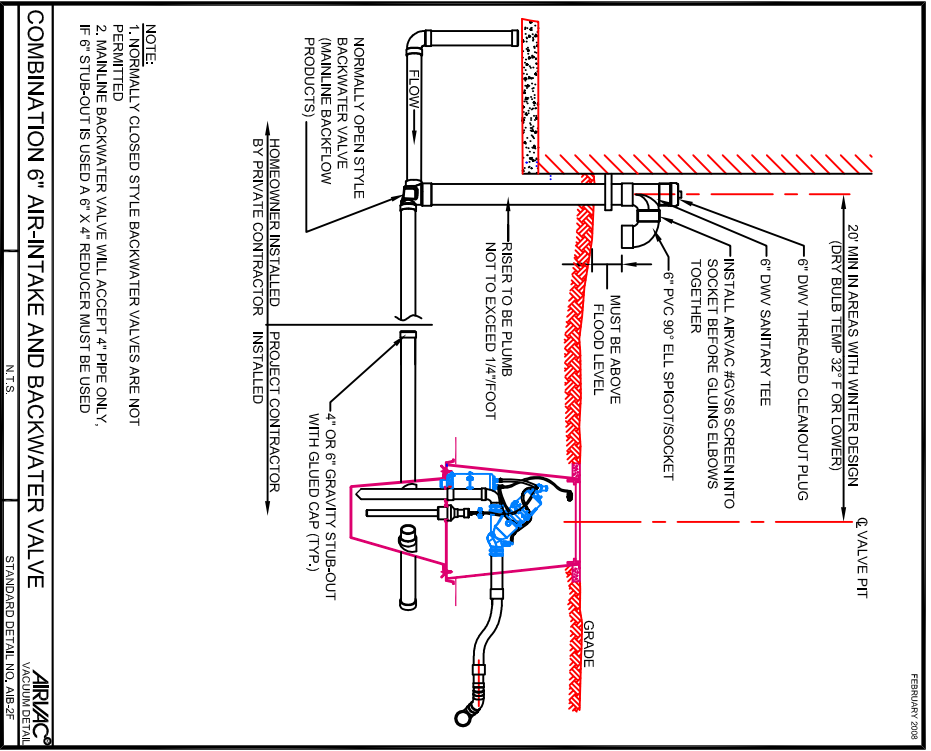
STANDARD DETAIL NO. AIR-3F
VACUUM DETAIL



NOTE:
1. NORMALLY CLOSED STYLE BACKWATER VALVES ARE NOT PERMITTED
2. MAINLINE BACKWATER VALVE WILL ACCEPT 4" PIPE ONLY, IF 6" STUB-OUT IS USED A 6" X 4" REDUCER MUST BE USED
3. DO NOT INSTALL VACUUM VALVE UNTIL 4" AIR-INTAKE ASSEMBLY IS IN PLACE

VALVE PIT - PRIOR TO HOUSE CONN (W/BACKWATER VALVE)

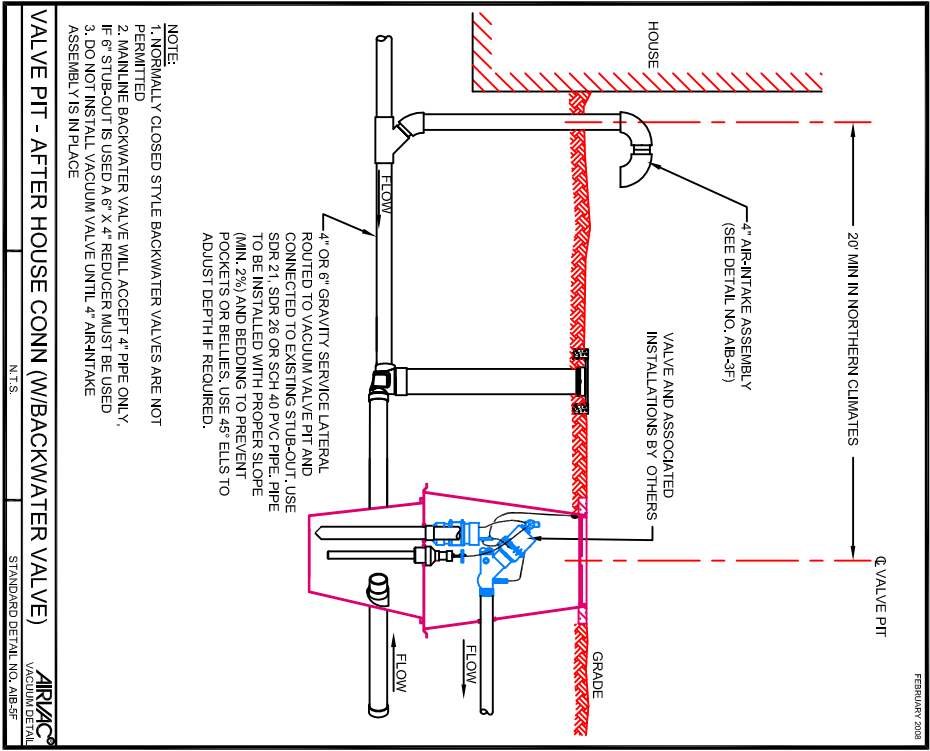
STANDARD DETAIL NO. AIR-4F
VACUUM DETAIL



NOTE:
1. NORMALLY CLOSED STYLE BACKWATER VALVES ARE NOT PERMITTED
2. MAINLINE BACKWATER VALVE WILL ACCEPT 4" PIPE ONLY, IF 6" STUB-OUT IS USED A 6" X 4" REDUCER MUST BE USED

COMBINATION 6" AIR-INTAKE AND BACKWATER VALVE

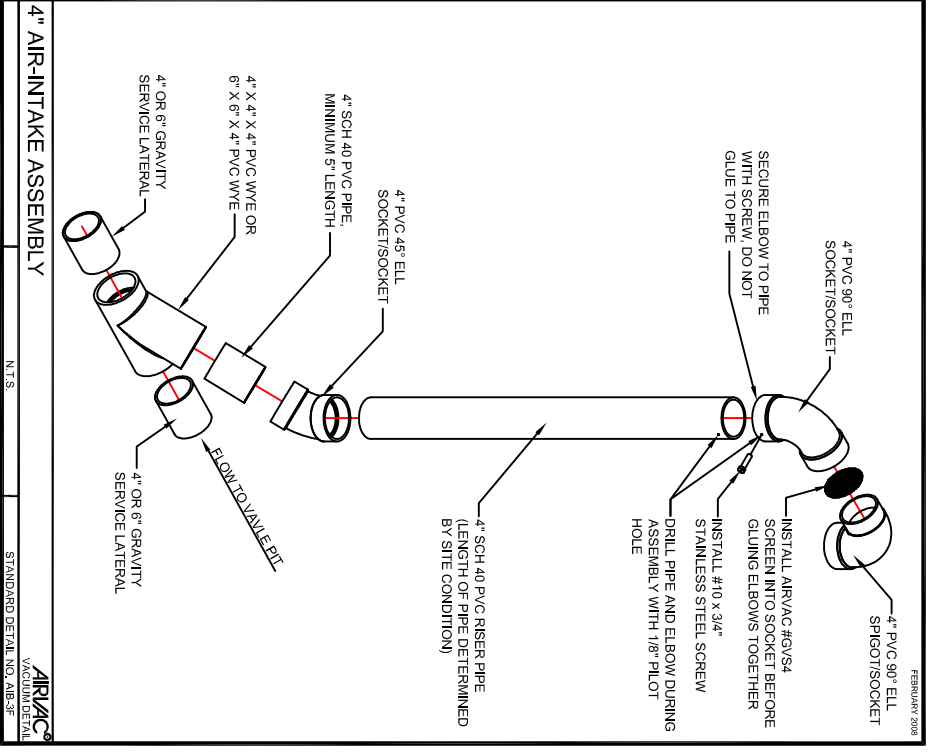
STANDARD DETAIL NO. AIR-5F
VACUUM DETAIL



NOTE:
1. NORMALLY CLOSED STYLE BACKWATER VALVES ARE NOT PERMITTED
2. MAINLINE BACKWATER VALVE WILL ACCEPT 4" PIPE ONLY, IF 6" STUB-OUT IS USED A 6" X 4" REDUCER MUST BE USED
3. DO NOT INSTALL VACUUM VALVE UNTIL 4" AIR-INTAKE ASSEMBLY IS IN PLACE

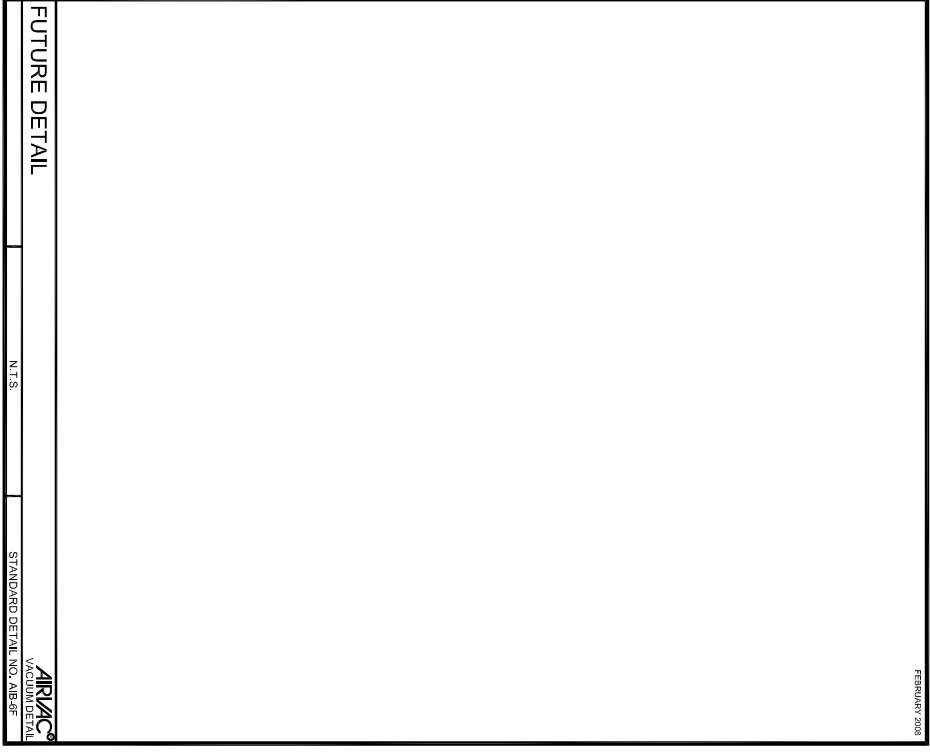
VALVE PIT - AFTER HOUSE CONN (W/BACKWATER VALVE)

STANDARD DETAIL NO. AIR-5F
VACUUM DETAIL



4" AIR-INTAKE ASSEMBLY

STANDARD DETAIL NO. AIR-3E
VACUUM DETAIL



FUTURE DETAIL

STANDARD DETAIL NO. AIR-5F
VACUUM DETAIL

IN CONSIDERATION OF THE RECEIPT OF THIS DOCUMENT, THE USER AGREES TO HOLD AIRVAC, INC. HARMLESS FROM AND AGAINST ALL CLAIMS, DAMAGES, LOSSES AND EXPENSES, INCLUDING REASONABLE ATTORNEY'S FEES, THAT MAY BE ASSERTED AGAINST AIRVAC, INC. BY ANY PARTY AS A RESULT OF THE USE OF THIS DOCUMENT. THIS AGREEMENT SHALL BE GOVERNED BY THE LAWS OF THE STATE OF CALIFORNIA. THE USER'S ACCEPTANCE OF THIS DOCUMENT SHALL BE DEEMED TO BE ACCEPTANCE OF THESE TERMS AND CONDITIONS.

NO.	REVISIONS

DATE

TITLE

AIR-INTAKE W/BACKWATER VALVE DETAILS - 3 PIECE PITTS