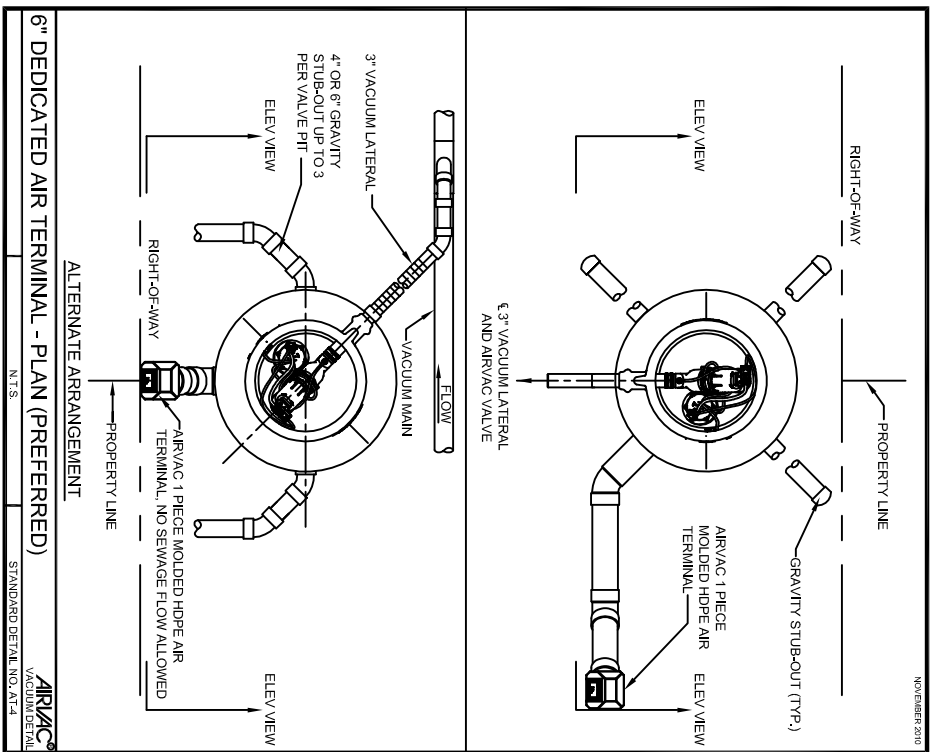


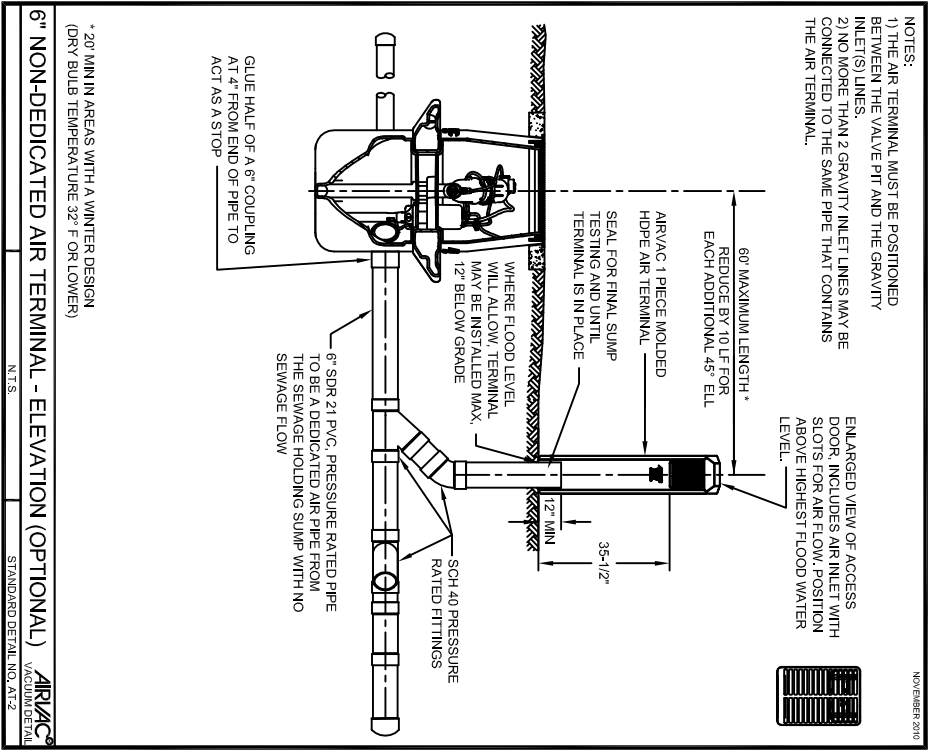
6" DEDICATED AIR TERMINAL - ELEVATION (PREFERRED)
 NOVEMBER 2010
 AIR/VAC VACUUM DETAIL
 STANDARD DETAIL NO. AT-1
 N.T.S.

* 20" MIN IN AREAS WITH A WINTER DESIGN (DRY BULB TEMPERATURE 32° F OR LOWER)



6" DEDICATED AIR TERMINAL - PLAN (PREFERRED)
 NOVEMBER 2010
 AIR/VAC VACUUM DETAIL
 STANDARD DETAIL NO. AT-1
 N.T.S.

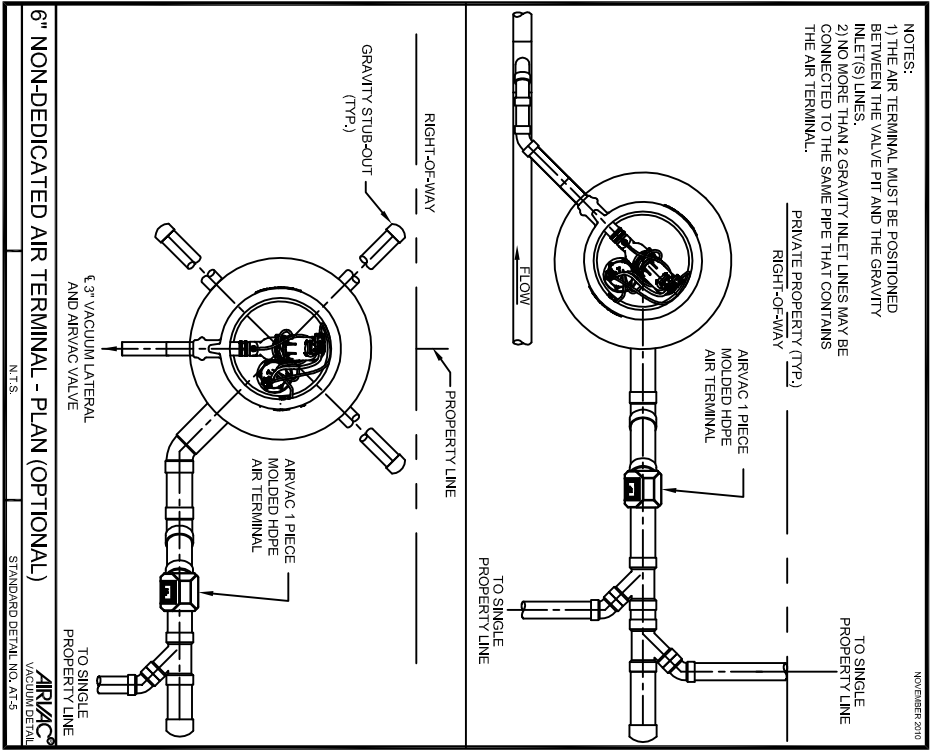
ALTERNATE ARRANGEMENT



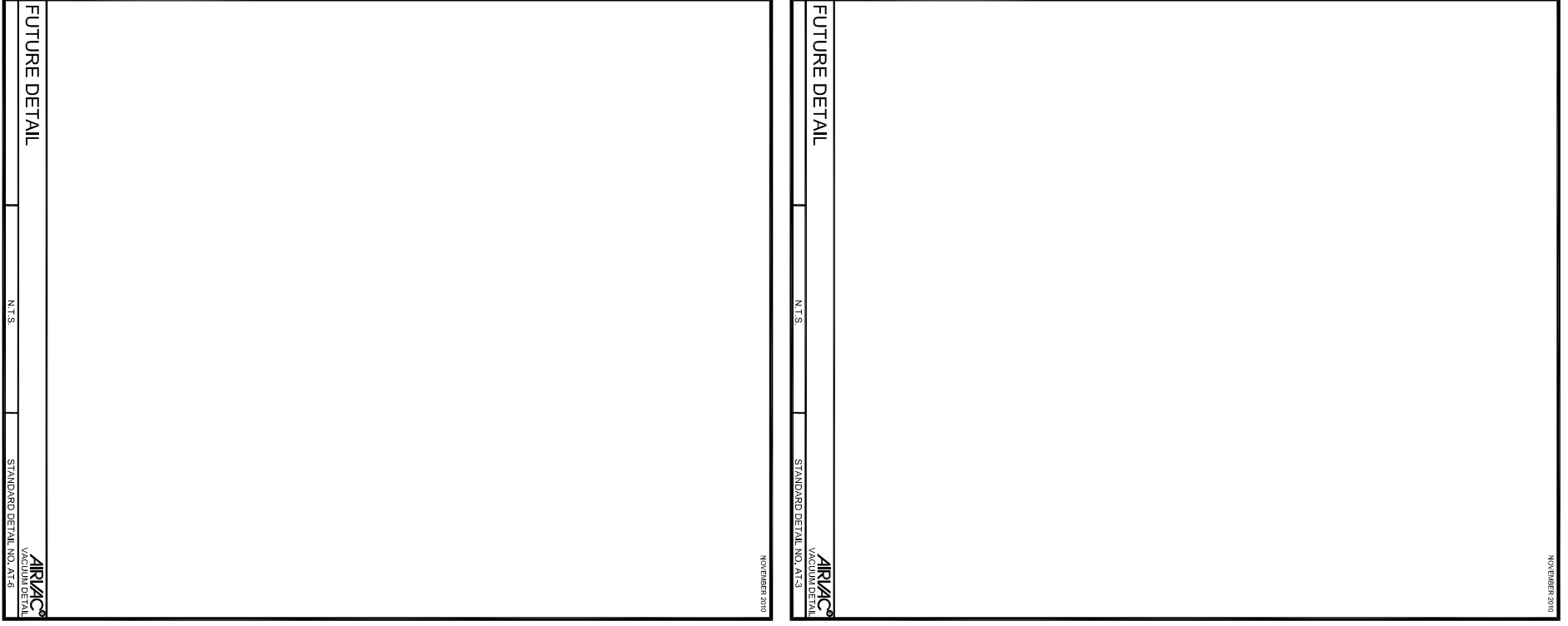
6" NON-DEDICATED AIR TERMINAL - ELEVATION (OPTIONAL)
 NOVEMBER 2010
 AIR/VAC VACUUM DETAIL
 STANDARD DETAIL NO. AT-2
 N.T.S.

* 20" MIN IN AREAS WITH A WINTER DESIGN (DRY BULB TEMPERATURE 32° F OR LOWER)

NOTES:
 1) THE AIR TERMINAL MUST BE POSITIONED BETWEEN THE VALVE PIT AND THE GRAVITY INLET(S) LINES.
 2) NO MORE THAN 2 GRAVITY INLET LINES MAY BE CONNECTED TO THE SAME PIPE THAT CONTAINS THE AIR TERMINAL.



6" NON-DEDICATED AIR TERMINAL - PLAN (OPTIONAL)
 NOVEMBER 2010
 AIR/VAC VACUUM DETAIL
 STANDARD DETAIL NO. AT-3
 N.T.S.



FUTURE DETAIL
 NOVEMBER 2010
 AIR/VAC VACUUM DETAIL
 STANDARD DETAIL NO. AT-3
 N.T.S.

NO CONSIGNATION OF THE RECEIPT OF THIS DOCUMENT, THE REQUIREMENTS NOT TO REPRODUCE OR TO USE OR TRANSMIT THIS DOCUMENT AND/OR THE INFORMATION THEREIN CONTAINED IN WHOLE OR IN PART OR TO SUFFER SUCH ACTION BY OTHER, FOR ANY PURPOSE EXCEPT WITH THE WRITTEN PERMISSION OF AIR/VAC, INC. AND FURTHER AGREES TO SURRENDER SAME TO AIR/VAC, INC. UPON DEMAND.

NO.	1	REVISED TO SHOW OPTIONAL LAYOUTS
REVISIONS		
DATE	9-9-09	