

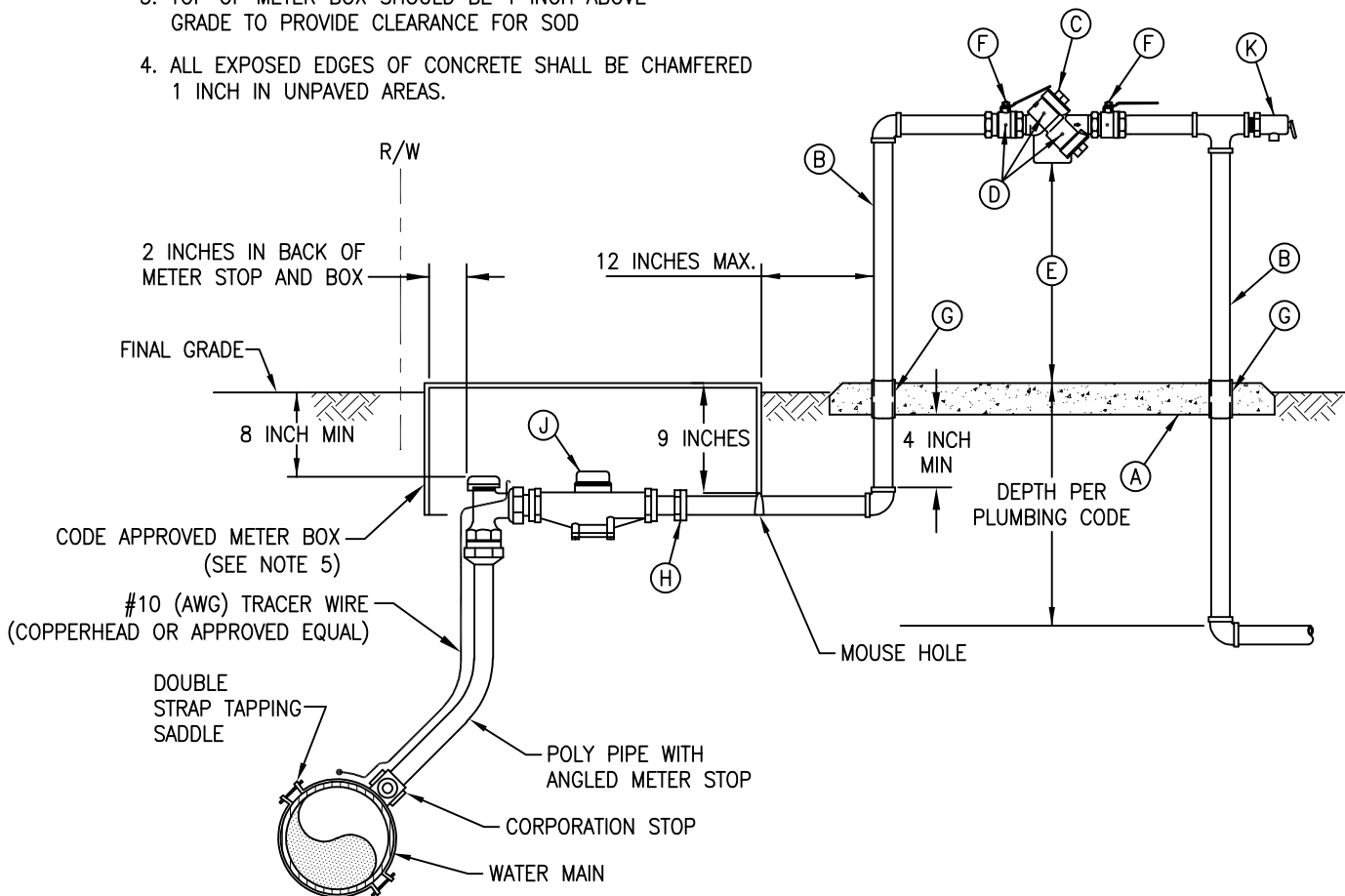
MATERIALS

- (A) CONCRETE PAD 4 INCHES THICK AND 3 INCHES BEYOND ALL PIPES (OPTIONAL)
- (B) TYPE "L" OR "K" HARD COPPER, BRASS/NO GALVANIZED, OR PVC
- (C) ALL COUNTY OWNED AND MAINTAINED SYSTEMS SHALL BE RPZ WILKINS MODEL 975XL2
ALL COMMERCIAL FACILITIES SHALL BE RPZ BFP PER USC AND LEAD FREE
- (D) APPROPRIATE TEST COCKS
- (E) 12 INCHES MINIMUM – 18 INCHES MAXIMUM CLEARANCE
- (F) APPROVED RESILIENT SEAT BALL VALVE FOR SIZES LESS THAN 3 INCHES
- (G) PVC SLEEVE AROUND PIPE TO PROTECT IT FROM CONCRETE
- (H) METER SPUD (SUPPLIED BY SARASOTA COUNTY PUBLIC UTILITIES)
- (J) METER (SUPPLIED BY SARASOTA COUNTY PUBLIC UTILITIES)
- (K) PRESSURE RELEASE VALVE PER PLUMBING CODE

NOTES:

1. ALL RIGID PIPE AND FITTINGS, NO P.V.C. ABOVE GROUND
2. THE METER BOX AND METER STOP SHALL BE INSTALLED SO THE METER REGISTER IS CENTERED ON THE ACCESS HATCH AND PARALLEL TO THE METER BOX.
3. TOP OF METER BOX SHOULD BE 1 INCH ABOVE GRADE TO PROVIDE CLEARANCE FOR SOD
4. ALL EXPOSED EDGES OF CONCRETE SHALL BE CHAMFERED 1 INCH IN UNPAVED AREAS.

5. CODE APPROVED METER BOX
BOX: 20"x13"x12"
LID: 18"x11"x1-3/4" W/2" O/S CELLULAR READ
ANTENNA ENDPOINT
TIER 8 – STANDARD
TIER 15 – TRAFFICE BEARING



N.T.S.