

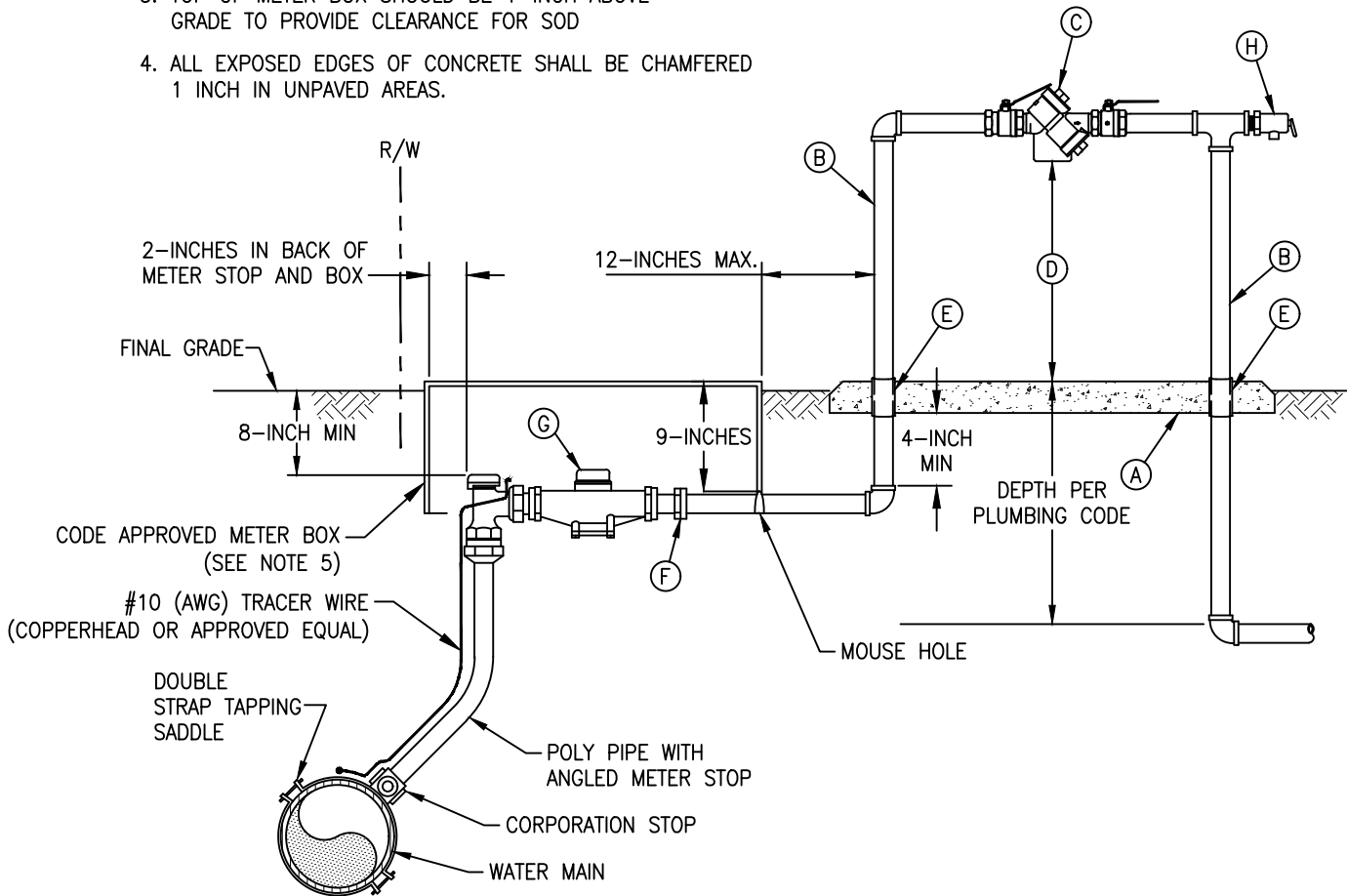
MATERIALS

- (A) CONCRETE PAD 4-INCHES THICK AND 3-INCHES BEYOND ALL PIPES (OPTIONAL)
- (B) TYPE "L" OR "K" HARD COPPER, BRASS/NO GALVANIZED, OR PVC
- (C) ALL COUNTY OWNED AND MAINTAINED SYSTEMS SHALL BE RPZ WILKINS MODEL 975XL2
- (D) 12-INCHES MINIMUM – 18-INCHES MAXIMUM CLEARANCE
- (E) PVC SLEEVE AROUND PIPE TO PROTECT IT FROM CONCRETE
- (F) METER SPUD (SUPPLIED BY SARASOTA COUNTY PUBLIC UTILITIES)
- (G) METER (SUPPLIED BY SARASOTA COUNTY PUBLIC UTILITIES)
- (H) PRESSURE RELEASE VALVE PER PLUMBING CODE

NOTES:

1. ALL RIGID PIPE AND FITTINGS, NO P.V.C. ABOVE GROUND
2. THE METER BOX AND METER STOP SHALL BE INSTALLED SO THE METER REGISTER IS CENTERED ON THE ACCESS HATCH AND PARALLEL TO THE METER BOX.
3. TOP OF METER BOX SHOULD BE 1-INCH ABOVE GRADE TO PROVIDE CLEARANCE FOR SOD
4. ALL EXPOSED EDGES OF CONCRETE SHALL BE CHAMFERED 1 INCH IN UNPAVED AREAS.

5. CODE APPROVED METER BOX
 BOX: 20-INCH X 13-INCH X 12-INCH
 LID: 18-INCH X 11-INCH X 1-3/4-INCH
 W/2-INCH O/S CELLULAR READ ANTENNA ENDPOINT
 TIER 8 – STANDARD
 TIER 15 – TRAFFICE BEARING



N.T.S.