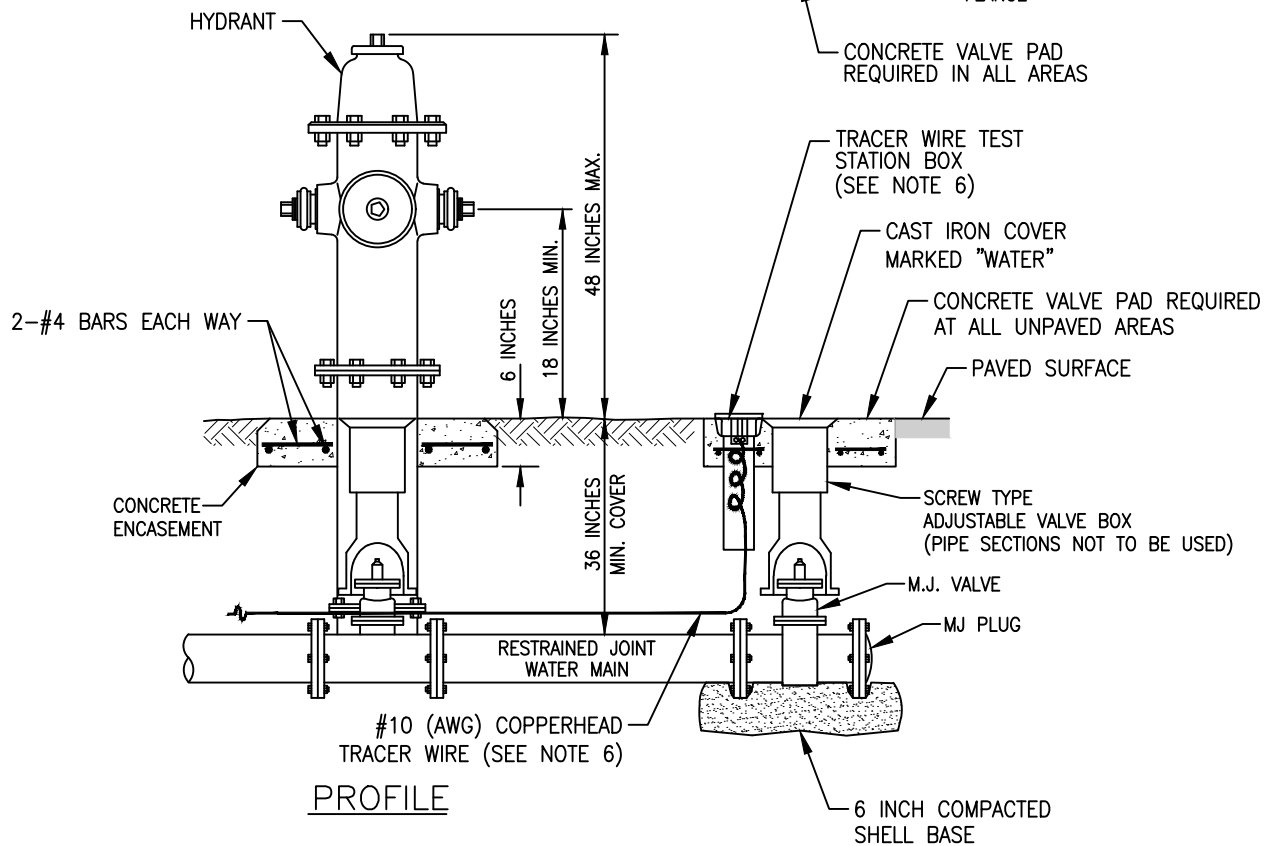
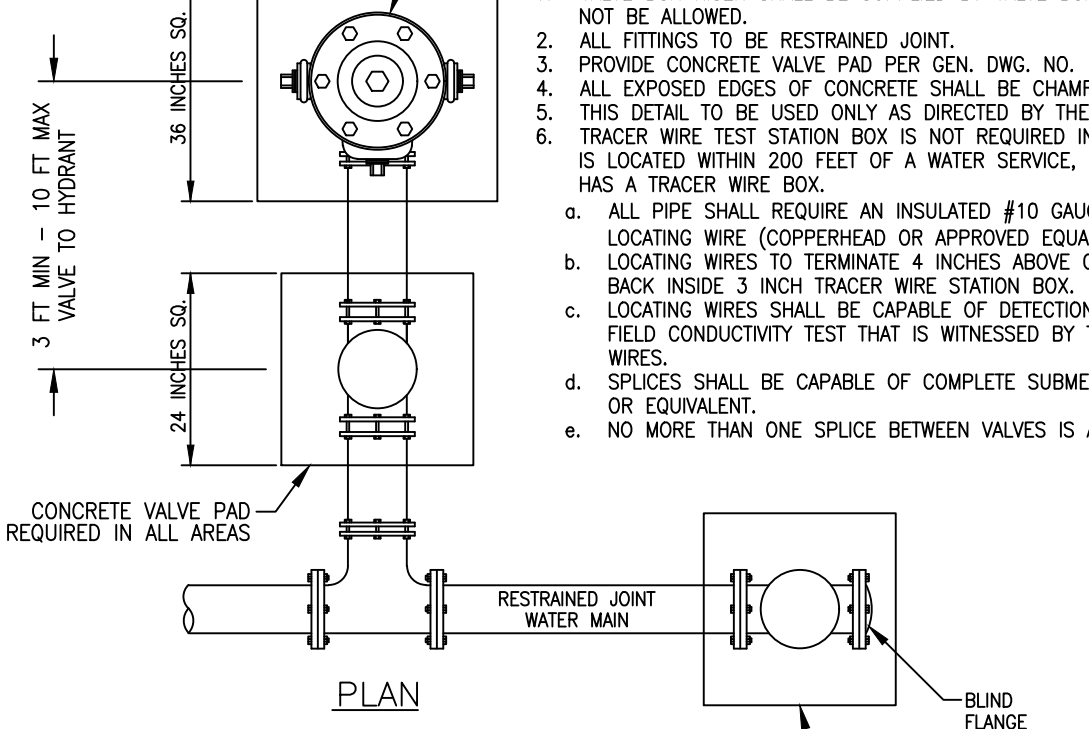


KENNEDY K-81D, AMERICAN DARLING B-84B-5,
 MUELLER SUPER CENTURION 250, OR WITH
 APPROVED EQUAL MEETING AWWA C502 UL 246 FM
 1510 CERTIFIED ANSI / NSF 60 & 372.

NOTES:

1. VALVE BOX RISER SHALL BE SUPPLIED BY VALVE BOX MANUFACTURER. P.V.C. RISER SHALL NOT BE ALLOWED.
2. ALL FITTINGS TO BE RESTRAINED JOINT.
3. PROVIDE CONCRETE VALVE PAD PER GEN. DWG. NO. 1.
4. ALL EXPOSED EDGES OF CONCRETE SHALL BE CHAMFERED 1 INCH IN UNPAVED AREAS.
5. THIS DETAIL TO BE USED ONLY AS DIRECTED BY THE UTILITY DEPARTMENT.
6. TRACER WIRE TEST STATION BOX IS NOT REQUIRED IN VALVE BOX PAD IF THE GATE VALVE IS LOCATED WITHIN 200 FEET OF A WATER SERVICE, BLOW-OFF, OR FIRE HYDRANT THAT HAS A TRACER WIRE BOX.
 - a. ALL PIPE SHALL REQUIRE AN INSULATED #10 GAUGE COPPER CLAD STEEL CORE LOCATING WIRE (COPPERHEAD OR APPROVED EQUAL).
 - b. LOCATING WIRES TO TERMINATE 4 INCHES ABOVE CONCRETE VALVE PAD AND FOLDED BACK INSIDE 3 INCH TRACER WIRE STATION BOX.
 - c. LOCATING WIRES SHALL BE CAPABLE OF DETECTION BY A CABLE LOCATOR AND PASS A FIELD CONDUCTIVITY TEST THAT IS WITNESSED BY THE COUNTY FROM END TO END OF WIRES.
 - d. SPLICES SHALL BE CAPABLE OF COMPLETE SUBMERSION. SPLICES SHALL USE DRYCONN OR EQUIVALENT.
 - e. NO MORE THAN ONE SPLICE BETWEEN VALVES IS ALLOWED.



N.T.S.

WATER_DWG_NO.3.DWG 03/2020