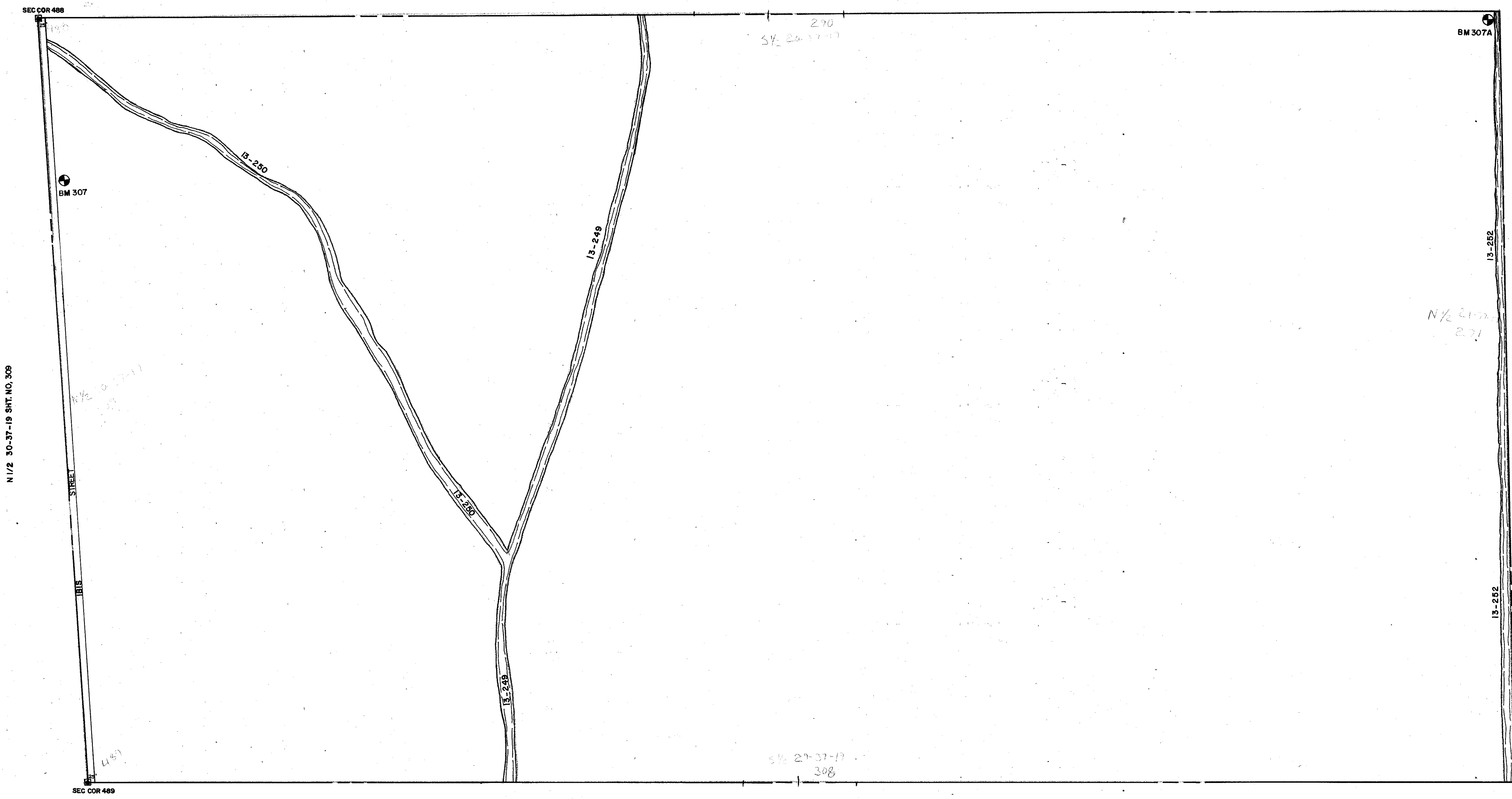


S 1/2 20-37-19 SHT NO 290



N 1/2 30-37-19 SHT. NO. 309

N 1/2 21-37-19 SHT. NO. 291

S 1/2 29-37-19 SHT. NO. 308

LEGEND:

- ▣ County Section Corner Monument
- ⊙ County Bench Mark
- Permanent Ref. Mon. for Subs.
- ① Subdivision Index Number

REVISIONS	
DATE	DESCRIPTION
NOV 1987	ADDED DRAINAGE DITCHES & NUMBERS
MAY 1990	CHANGED 1815 AVE. TO 1816 STREET

SARASOTA COUNTY, FLORIDA
 Scale: 1" = 200' Date: APRIL 1987
 Drawn By: RJJ

**N 1/2 SECTION 29
 TWP. 37 S.-RNG. 19E.**

Sheet No.
 307