

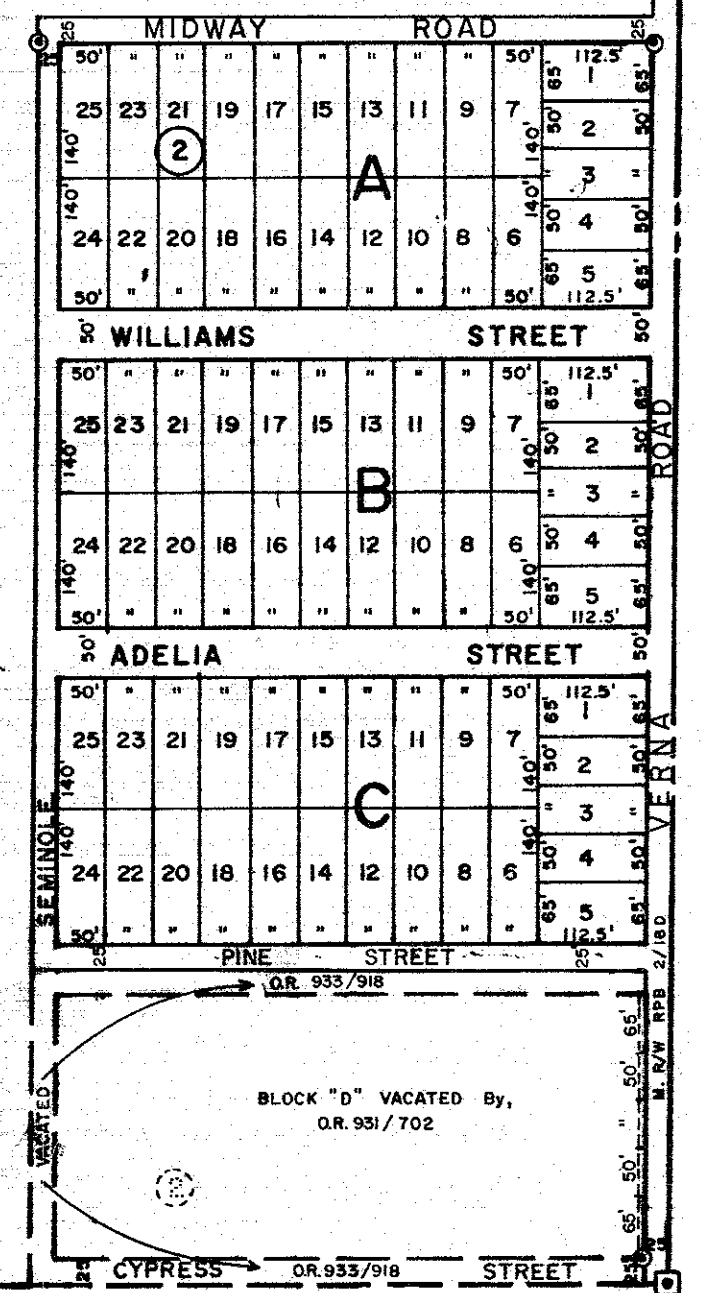
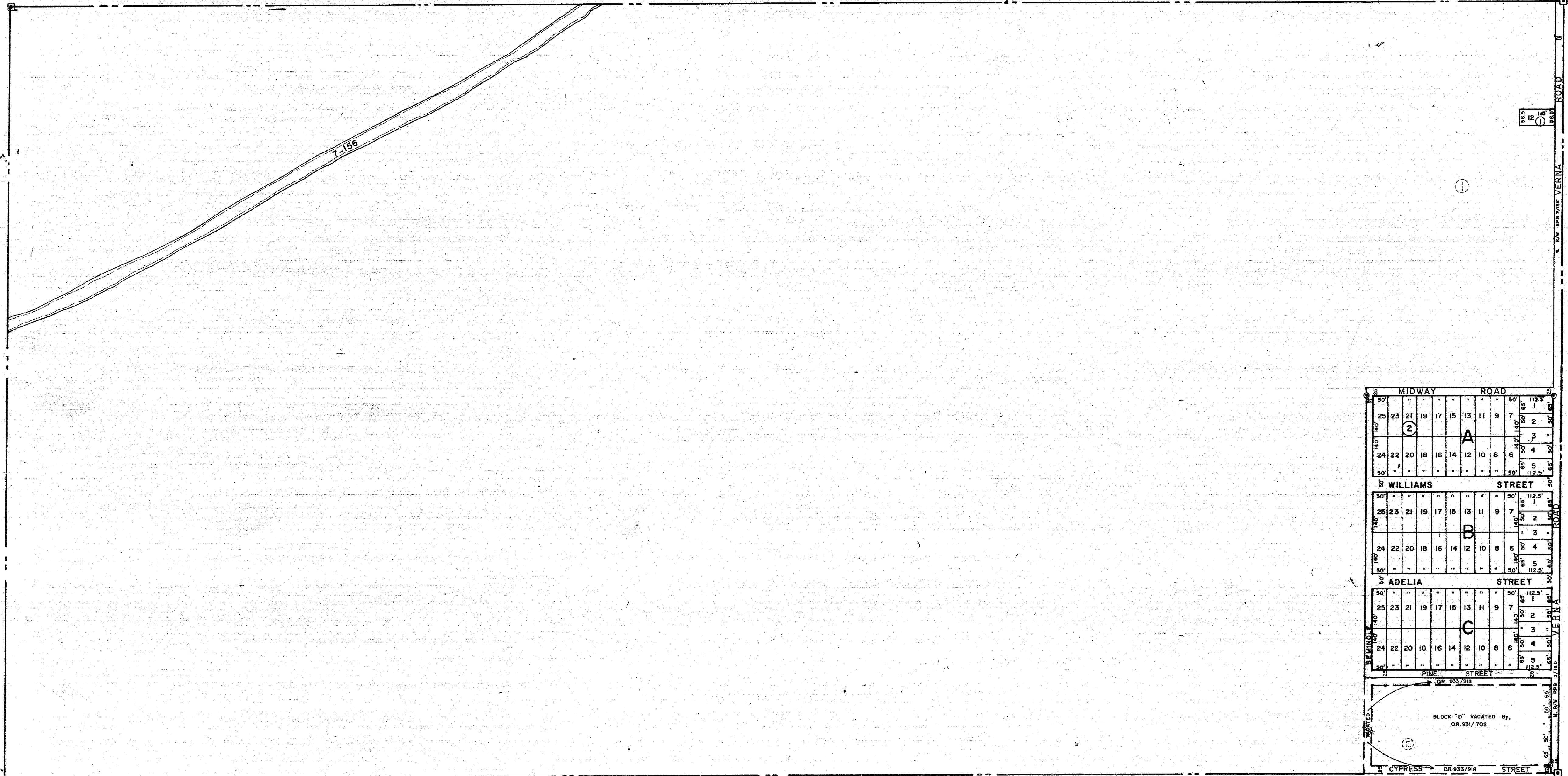
MANATEE COUNTY

SEC. COR. NO. 1503

SEC. COR. 1622

N 1/2 3-36-20 SHT. NO. 509

N 1/2 1-36-20 SHT. NO. 505



S1/2 2-36-20 SHT. NO. 508

SUBDIVISION INDEX

No.	Name	
1	SOUTHLAND MANOR	1/200 (VACATED)
2	FLORIANA HIGHLANDS	2/46

LEGEND :

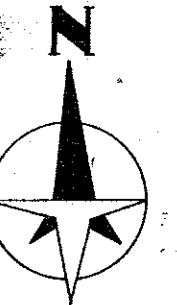
- Section Corner Monument
- ⊙ Permanent Reference Monument
- Reference Point for Subdivisions
- ① Subdivision Index Number
- ▨ Drainage
- ▩ County Property

ALTERATIONS	
DATE	DESCRIPTION
SEPT. 63	REVISIONS & ADDITIONS.
APRIL 66	REDRAWN
Nov. 1975	Vacated Block "D", Floriana Highlands, O.R. 931/702
Nov. 1975	Vacated Cypress St., R. Part of Seminole and Pine St., O.R. 933/918
Feb. 1978	Vacated Southland Manor, O.R. 883, P. 646
NOV. 1983	SECTION CORNERS - DNR
JULY 1985	INDEX
SEPT 1987	ADDED CANAL NUMBERS

SARASOTA COUNTY FLORIDA
SCALE: 1" = 200'
APRIL, 1966

N 1/2 SECTION 2
TWP. 36 S. RNG. 20E.

SHT. NO.
507



SEC. COR. 1623