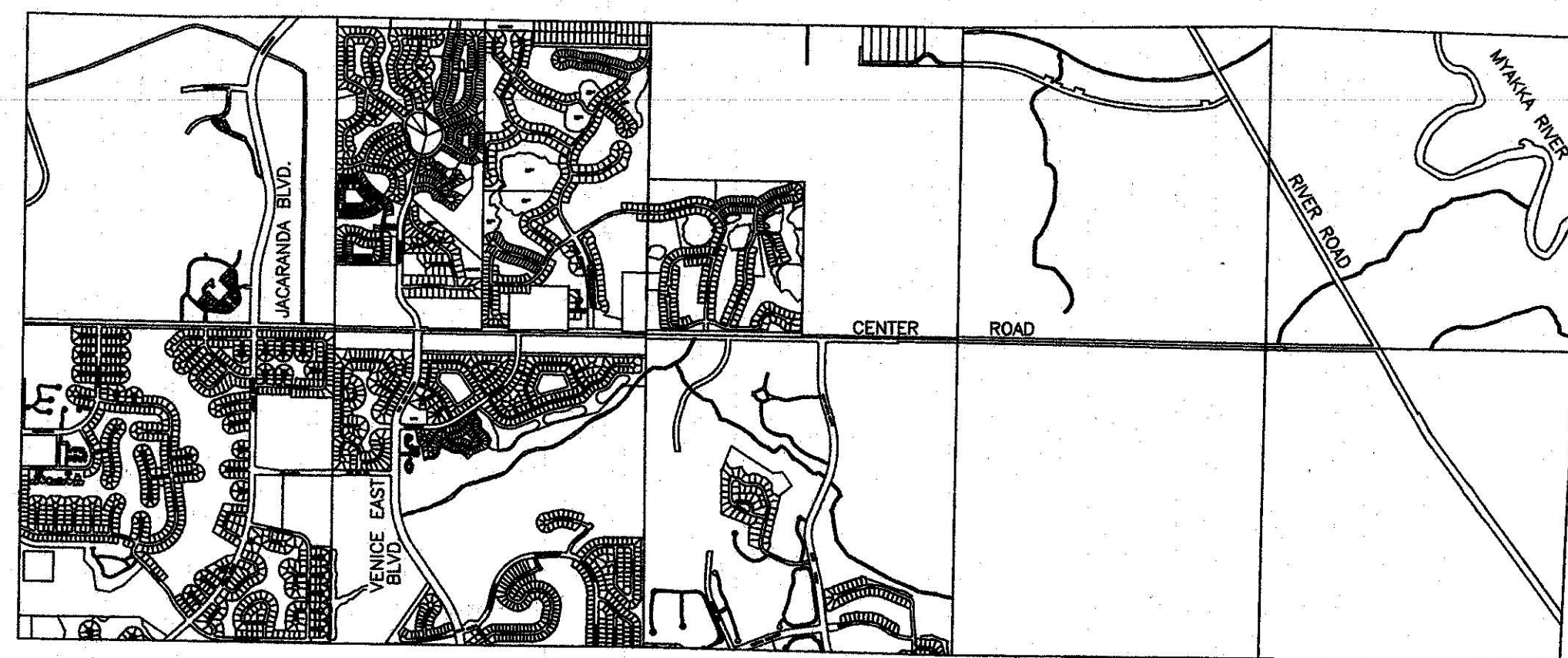
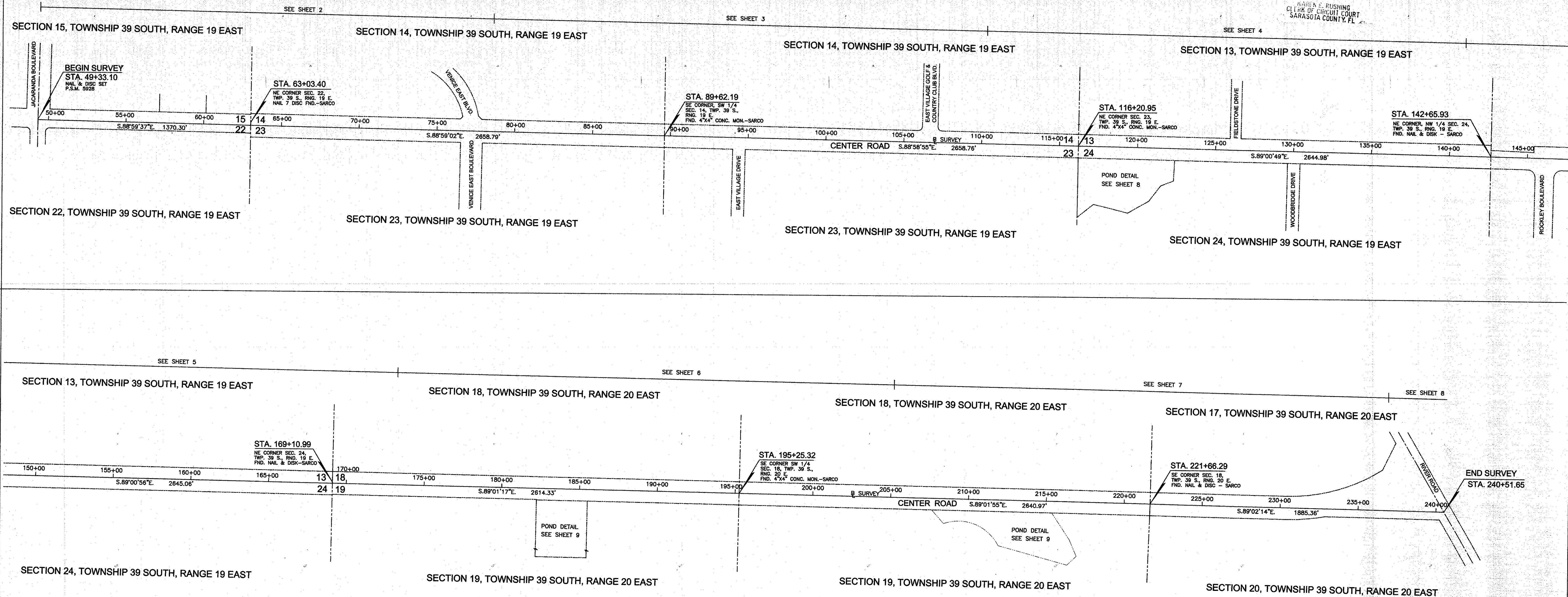


FILED FOR RECORD
2009 SEP -9 AM 10:46
KAREN E. RUSHING
CLERK OF CIRCUIT COURT
SARASOTA COUNTY, FL



LOCATION MAP - NOT TO SCALE

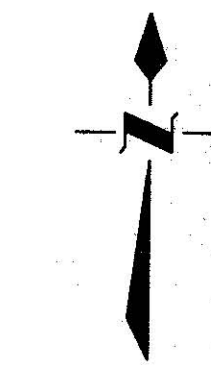
SURVEYOR'S NOTES

1. BEARINGS SHOWN ARE BASED ON ASSUMED DATUM, THE SOUTH LINE OF THE SOUTHWEST QUARTER (1/4) OF SECTION 14, TOWNSHIP 39 SOUTH, RANGE 19 EAST, SARASOTA COUNTY, FLORIDA, BEING S 88°59'37"E.
2. THIS MAP WAS PREPARED WITHOUT THE BENEFIT OF AN ABSTRACT OF TITLE OR AN ATTORNEY'S OPINION OF TITLE. THEREOF, ANY DEED OVERLAP OR HATUS OR ANY RECORDED OR UNRECORDED RIGHTS-OF-WAY AND OR EASEMENTS MAY NOT BE SHOWN.
3. IMPROVEMENTS SUCH AS, BUT NOT LIMITED TO, UNDERGROUND UTILITIES, LANDSCAPE FEATURES, ETC., HAVE NOT BEEN LOCATED EXCEPT AS SHOWN.

FILE FOR RECORD IN ROAD PLAT BOOK 4 AT PAGES 70-70 H
OF THE PUBLIC RECORDS OF SARASOTA COUNTY, FLORIDA,
THIS 10th DAY OF September, 2009.



KAREN E. RUSHING
CLERK OF THE CIRCUIT COURT
SARASOTA COUNTY, FLORIDA
BY: *Elmer Shuford*
DEPUTY CLERK



SCALE 1"=300'



SCALE IN FEET

KEY MAP

R/W MARKERS SET: 5-11-07



SARASOTA COUNTY SURVEY-MAPPING
PLANNING & DEVELOPMENT SERVICES BUSINESS CENTER
1301 CATTLEMEN ROAD BLDG. "E" SARASOTA, FLORIDA 34232
941/861-6802 • 941/861-6865 • FAX 941/861-6157

ANY REPRODUCTION OF THIS MAP SHALL NOT BE "CERTIFIED A TRUE COPY" WITHOUT MY SIGNATURE AND DATE THEREOF IN INK, TOGETHER WITH MY EMBOSSED SEAL ON SAID COPY.

I HEREBY CERTIFY THAT THIS RIGHT OF WAY CONTROL WAS MADE FOR THE PURPOSE OF SURVEYING, REFERENCE, DESCRIBING AND MAPPING THE BASE LINE OF SURVEY AND PROPOSED RIGHT OF WAY LINES AS SHOWN AND UNDISTURBED HEREON AND THAT SAID SURVEY WAS DONE UNDER MY RESPONSIBLE CHARGE AND MEETS THE MINIMUM TECHNICAL STANDARDS SET FORTH BY THE FLORIDA BOARD OF PROFESSIONAL LAND SURVEYORS IN CHAPTER 61G17, FLORIDA ADMINISTRATIVE CODE PURSUANT TO SECTION 472.027, FLORIDA STATUTES.

John S. Owen 8-25-09
JOHN S. OWEN, Professional Surveyor and Mapper No. 5928

ABBREVIATION LEGEND
P.B. = PLAT BOOK
CONC. = CONCRETE
MON. = MONUMENT
R/W = RIGHT-OF-WAY
FND. = FOUND
CH = CHAIN MEASURED
PG. = PAGE
R.P.B. = ROAD PLAT BOOK
O.R.B. = OFFICIAL RECORDS BOOK
P.I.D. = PROPERTY IDENTIFICATION
NO. = NUMBER
R.C.P. = REINFORCED CONCRETE PIPE
C.M.P. = CORRUGATED METAL PIPE
T.O.S. = TOP OF SLOPE
T.O.B. = TOP OF BANK
Q.T. = OPEN TIE
F.P. = FLORIDA POWER & LIGHT
V.C. = VERIZON
CATV = CABLE TELEVISION
N&D = NAIL AND DISK
L.R. = IRON PIPE
L.R. = IRON ROD
E.P. = EDGE OF PAVEMENT
DR. = DRIVE
U/G. = UNDERGROUND
DRAIN = DRAIN
TEMP. = TEMPORARY
EASE. = EASEMENT
R= RADIUS

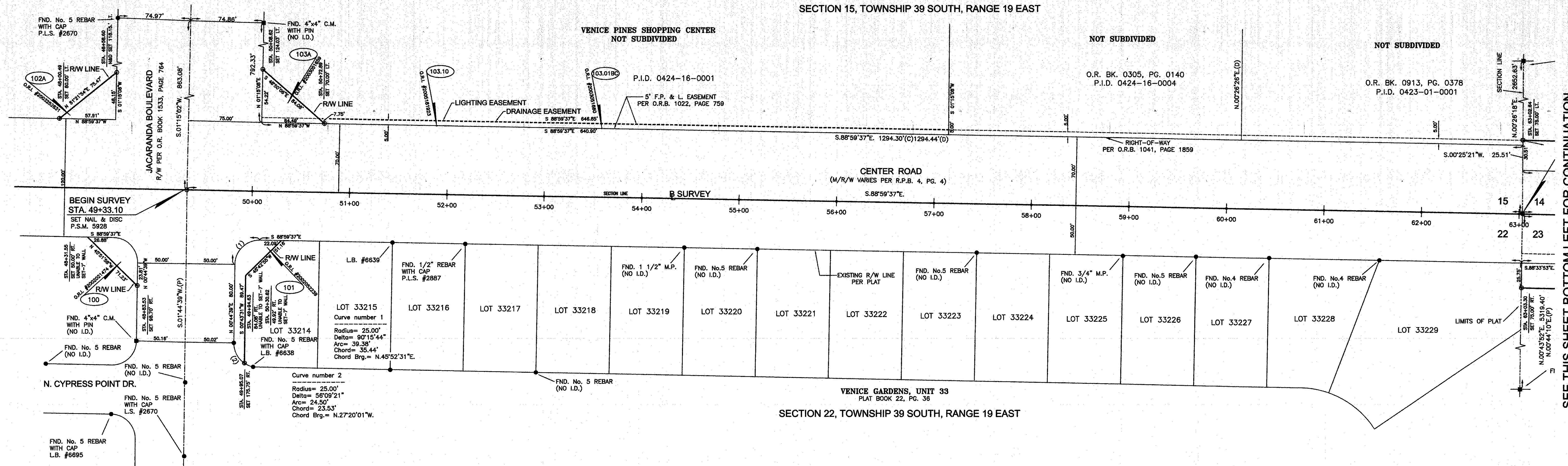
○ - NAIL AND DISK SET
■ - CONCRETE MONUMENT FOUND
□ - IRON ROD & CAP FOUND
● - IRON ROD FOUND
○ - IRON ROD AND CAP SET
○ - NAIL & DISK FOUND
X - CHISEL CUT FOUND
○ - 1/4" IRON ROD & ALUM.
R/W MARKER SET PER NO. 5928

SYMBOL LEGEND
○ - UTILITY POLE
○ - VALVE
○ - FIRE HYDRANT
○ - METER
○ - SANITARY MANHOLE
○ - SERVICE BOX
○ - CONTROL BOX
○ - TRANSFORMER

RIGHT-OF-WAY MAP
CENTER ROAD
(JACARANDA BLVD. TO RIVER RD.)

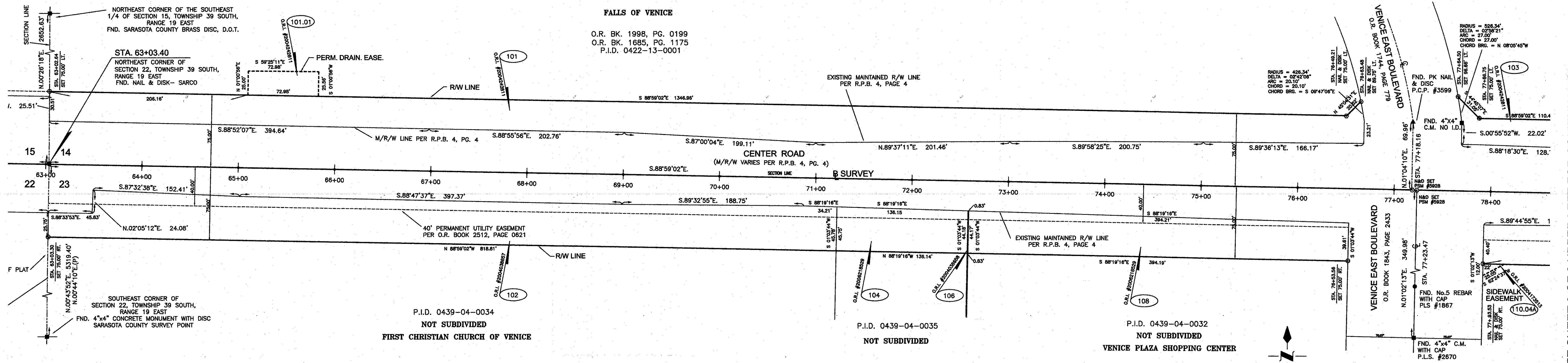
| | | |
|---------------------------------------|---------------------|------------------|
| PROJ. NO.: 95750, 95782, 95806 | DWG. DATE: 5-4-07 | SHEET NO. 1 of 9 |
| SEC: TWP: RGE: | FIELD DATE: 5-11-07 | |
| FIELD BOOK 495, PAGE 76 | DRAWN BY: TSO | |
| I:\SURVEY\CENTERCIP\RW_MAP_CENTER.DWG | CHECKED BY: ER, WP | |

SECTION 15, TOWNSHIP 39 SOUTH, RANGE 19 EAST



SEE THIS SHEET BOTTOM LEFT FOR CONTINUATION

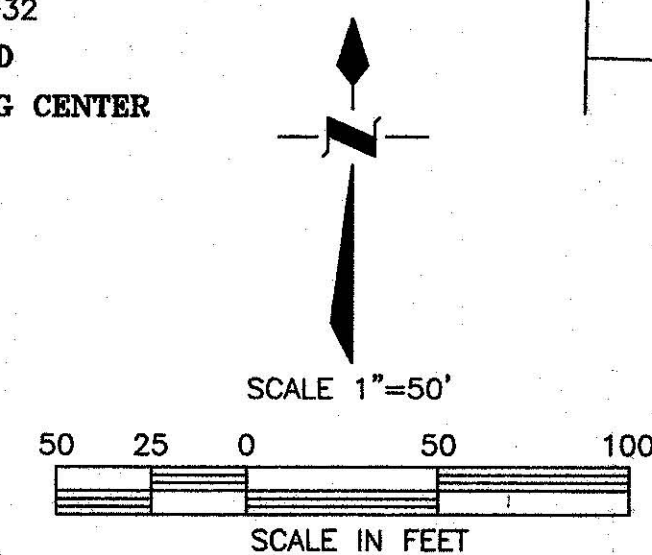
SECTION 14, TOWNSHIP 39 SOUTH, RANGE 19 EAST



SEE SHEET 3 OF 9 UPPER LEFT FOR CONTINUATION

SECTION 23, TOWNSHIP 39 SOUTH, RANGE 19 EAST

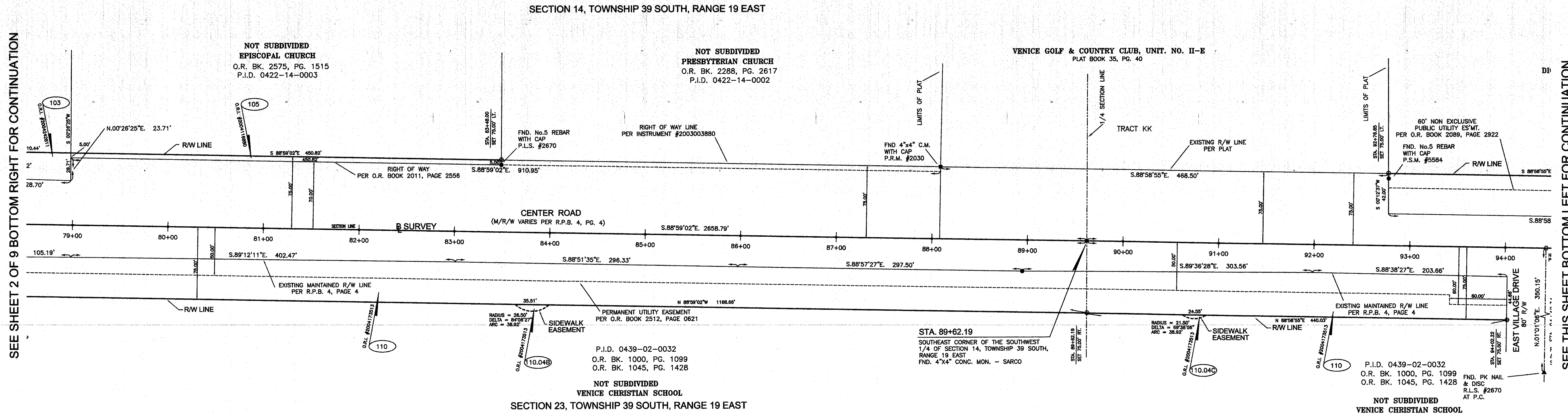
SEE THIS SHEET UPPER RIGHT FOR CONTINUATION



FILED FOR RECORD
2009 SEP -9 AM 10:46
SARASOTA COUNTY

SEE SHEET 2 OF 9 BOTTOM RIGHT FOR CONTINUATION

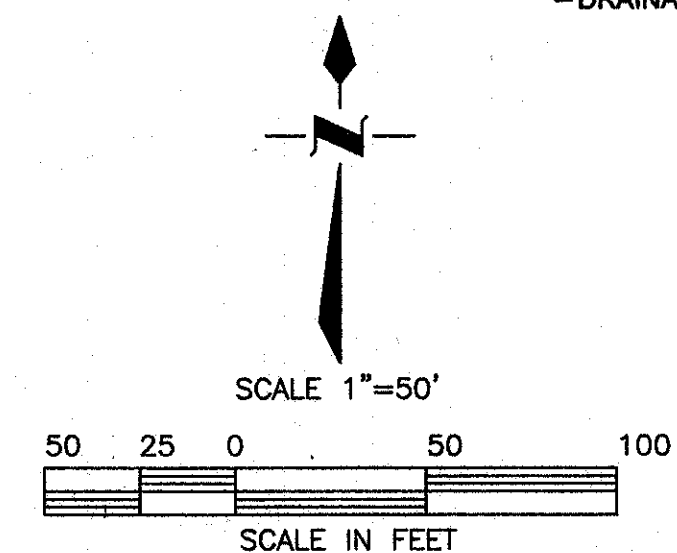
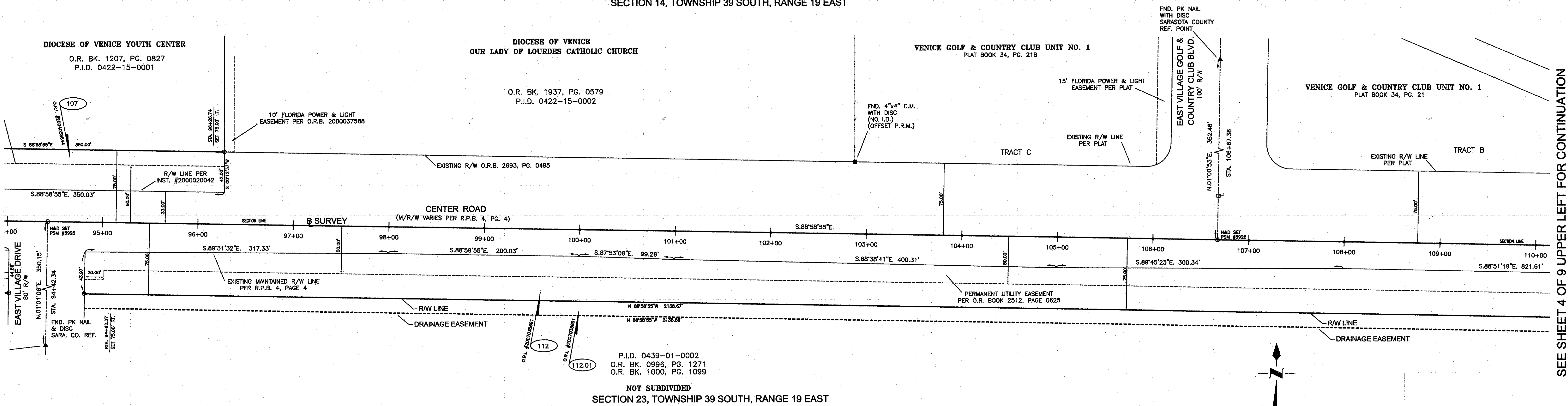
SEE THIS SHEET BOTTOM LEFT FOR CONTINUATION



SECTION 14, TOWNSHIP 39 SOUTH, RANGE 19 EAST

SEE THIS SHEET UPPER RIGHT FOR CONTINUATION

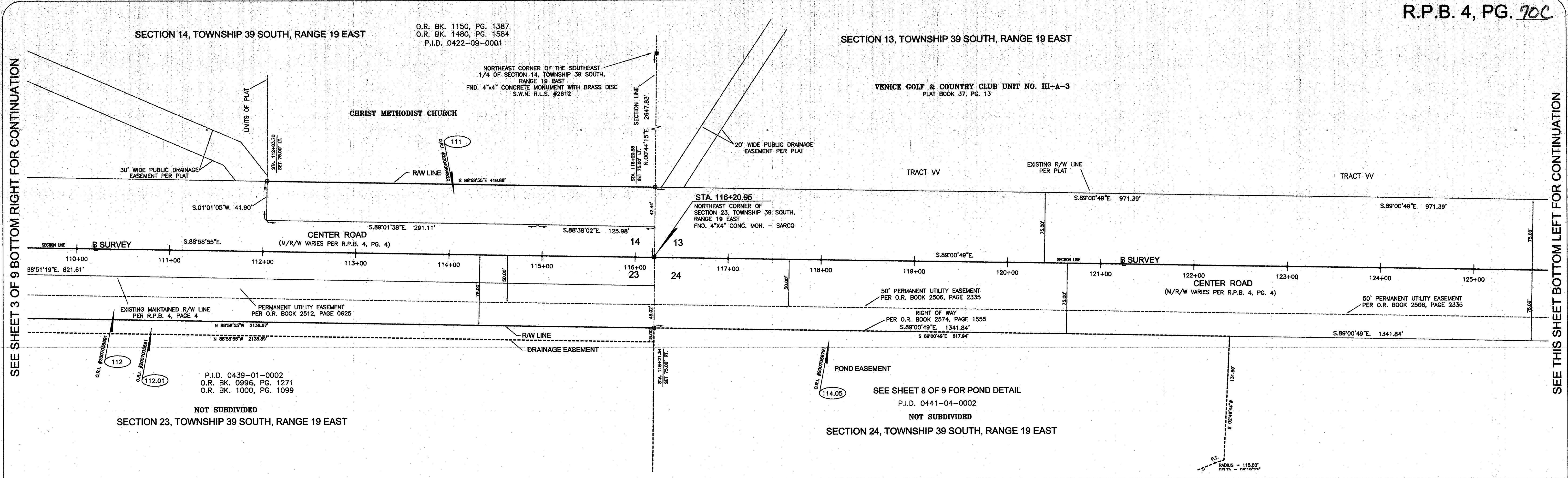
SEE SHEET 4 OF 9 UPPER LEFT FOR CONTINUATION



FILED FOR RECORD
2009 SEP -9 AM 10:46
KAREN E. RUSHING
CLERK OF CIRCUIT COURT
SARASOTA COUNTY, FL

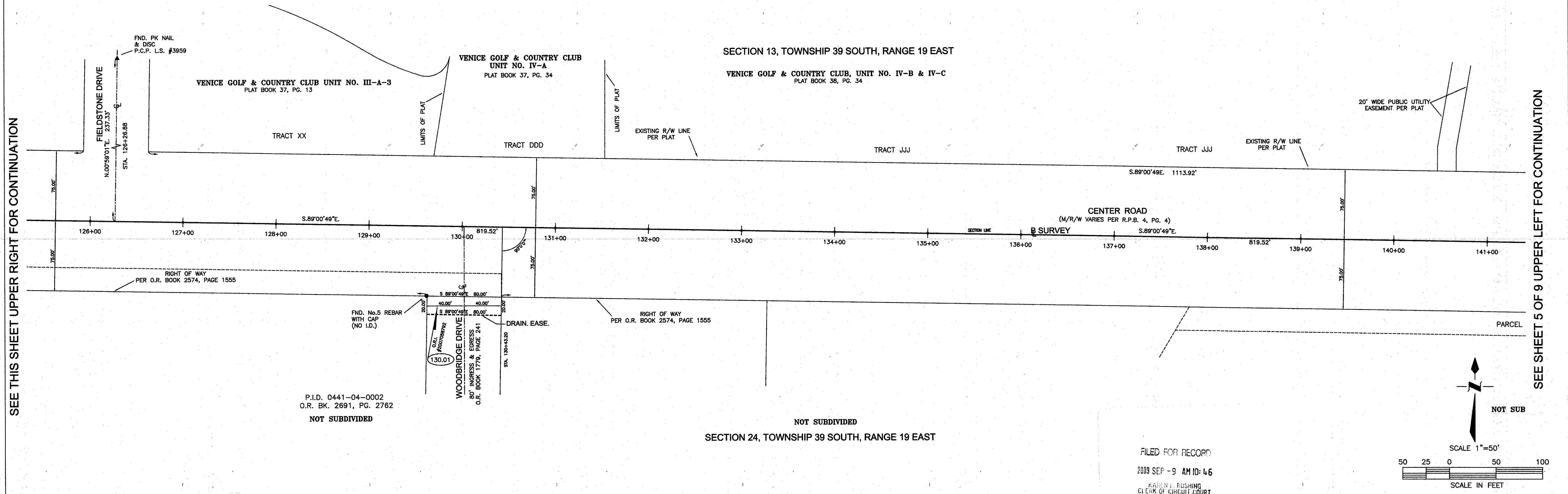
SEE SHEET 3 OF 9 BOTTOM RIGHT FOR CONTINUATION

SEE THIS SHEET BOTTOM LEFT FOR CONTINUATION



SEE THIS SHEET UPPER RIGHT FOR CONTINUATION

SEE SHEET 5 OF 9 UPPER LEFT FOR CONTINUATION



SARASOTA COUNTY SURVEY-MAPPING
PLANNING & DEVELOPMENT SERVICES BUSINESS CENTER
1301 CATTLEMAN ROAD BLDG. "E" SARASOTA, FLORIDA 34232
941/861-6802 • 941/861-6865 • FAX 941/861-6157

| ABBREVIATION LEGEND | | | |
|--------------------------------|-----------------------------------|-------------------------|--------------------------------|
| P.B. = PLAT BOOK | P.I.D. = PROPERTY IDENTIFICATION | NAD = NAIL AND DISK | ⊙ = NAIL AND DISK SET |
| CONC. = CONCRETE | NO. = NUMBER | LP. = IRON PIPE | ⊕ = CONCRETE MONUMENT FOUND |
| MON. = MONUMENT | R.C.P. = REINFORCED CONCRETE PIPE | IRON ROD | ⊖ = IRON ROD & CAP FOUND |
| R/W = RIGHT-OF-WAY | C.M.P. = CORRUGATED METAL PIPE | E.P. = EDGE OF PAVEMENT | ⊗ = IRON ROD FOUND |
| FOUND = FOUND | T.O.S. = TOE OF SLOPE | DR. = DRIVE | ⊙ = IRON ROD AND CAP SET |
| PLAT = PLAT | T.O.B. = TOP OF BANK | U/G = UNDERGROUND | ⊕ = NAIL & DISK FOUND |
| MEASURED = MEASURED | CT. = OPEN TRENCH | DRAIN = DRAIN | ⊗ = CHISEL CUT FOUND |
| PAGE = PAGE | F.P.L. = FLORIDA POWER & LIGHT | TEMP. = TEMPORARY | |
| R.P.B. = ROAD PLAT BOOK | FLK = FLORIDA | RA = RADIAL | ⊕ = 5/8" IRON ROD & NAIL |
| O.R.B. = OFFICIAL RECORDS BOOK | CATV = CABLE TELEVISION | | ⊖ = 1/2" MARKER SET PSM NO. 56 |

| SYMBOL LEGEND | |
|------------------|--------------|
| UTILITY POLE | VALVE |
| LIGHT POLE | FIRE HYDRANT |
| GUY WIRE | METER |
| SANITARY MANHOLE | CLEANOUT |
| SERVICE BOX | CONTROL BOX |
| TRANSFORMER | |

RIGHT-OF-WAY MAP
CENTER ROAD
(JACARANDA BLVD. TO RIVER RD.)

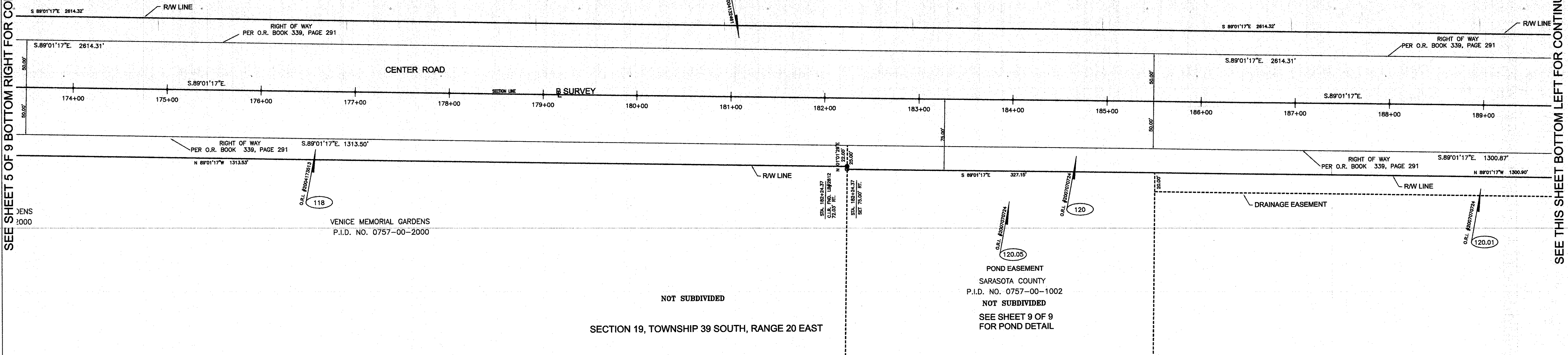
| | | |
|---------------------------------------|---------------------|-------------|
| PROJ. NO.: 95750, 95782, 95806 | DWG DATE: 5-4-07 | SHEET NO. 4 |
| SEC: TWP: RGE: | FIELD DATE: 5-11-07 | OF 9 |
| FIELD BOOK 495, PAGE 76 | DRAWN BY: TSO | |
| I:\SURVEY\CENTERCIP\RW_MAP_CENTER.DWG | CHECKED BY: ER, WP | |

SECTION 18, TOWNSHIP 39 SOUTH, RANGE 20 EAST

NOT SUBDIVIDED

SEE SHEET 5 OF 9 BOTTOM RIGHT FOR CONTINUATION

SEE THIS SHEET BOTTOM LEFT FOR CONTINUATION



NOT SUBDIVIDED

SECTION 19, TOWNSHIP 39 SOUTH, RANGE 20 EAST

SECTION 18, TOWNSHIP 39 SOUTH, RANGE 20 EAST

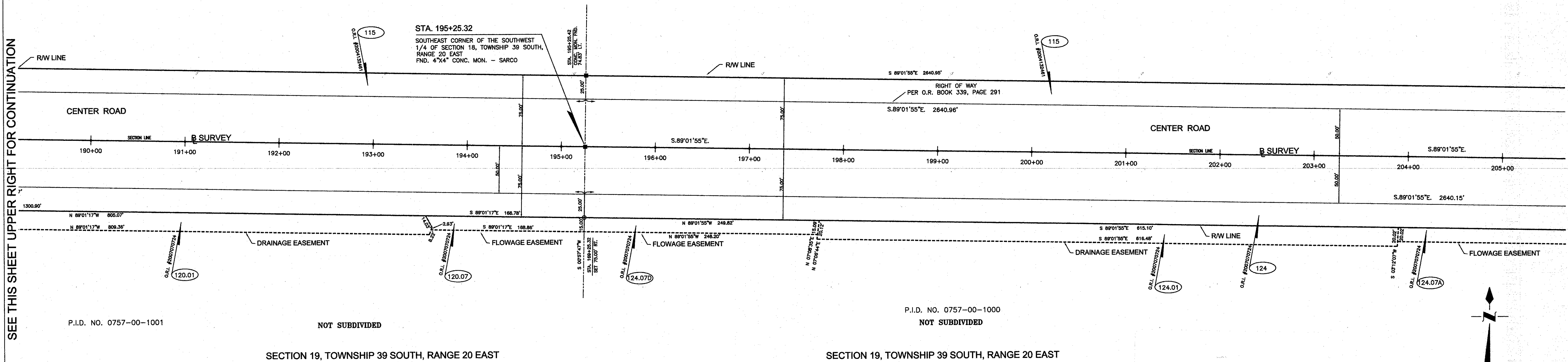
NOT SUBDIVIDED

SECTION 18, TOWNSHIP 39 SOUTH, RANGE 20 EAST

NOT SUBDIVIDED

SEE THIS SHEET UPPER RIGHT FOR CONTINUATION

SEE SHEET 7 OF 9 UPPER LEFT FOR CONTINUATION



NOT SUBDIVIDED

NOT SUBDIVIDED

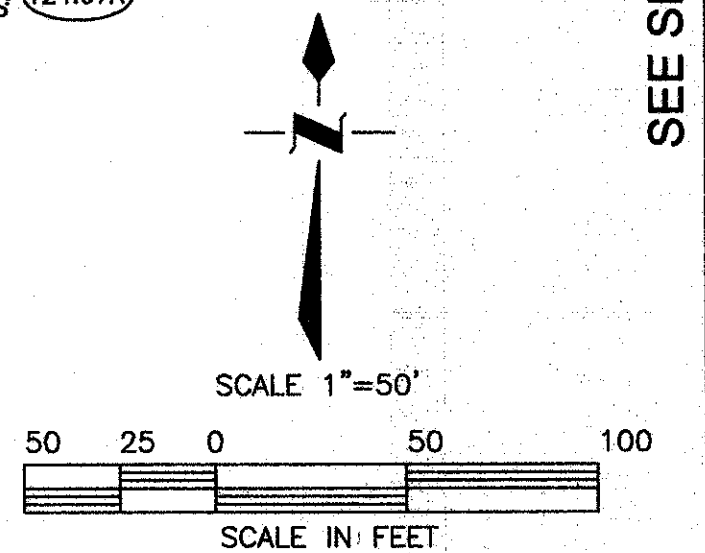
SECTION 19, TOWNSHIP 39 SOUTH, RANGE 20 EAST

SECTION 19, TOWNSHIP 39 SOUTH, RANGE 20 EAST

FILED FOR RECORD

2008 SEP -9 AM 10:46

KAREN L. RUSHING
CLERK OF CIRCUIT COURT
SARASOTA COUNTY, FL



SARASOTA COUNTY SURVEY-MAPPING
PLANNING & DEVELOPMENT SERVICES BUSINESS CENTER
1301 CATTLEMEN ROAD BLDG. "E" SARASOTA, FLORIDA 34232
941/861-6802 * 941/861-6865 * FAX 941/861-6157

| ABBREVIATION | LEGEND |
|--------------------------------|-----------------------------------|
| P.B. = PLAT BOOK | P.I.D. = PROPERTY IDENTIFICATION |
| CONC. = CONCRETE | NO. = NUMBER |
| MON. = MONUMENT | R.C.P. = REINFORCED CONCRETE PIPE |
| R/W = RIGHT-OF-WAY | C.M.P. = CORRUGATED METAL PIPE |
| FLD. = FIELD | T.O.S. = TOP OF SLOPE |
| TOE = TOP OF BANK | U.O. = UNDERGROUND |
| OT = OPEN TROUGH | DR. = DRAIN |
| VER. = VERIZON | TEMP. = TEMPORARY |
| R.P.B. = ROAD PLAT BOOK | EASE = EASEMENT |
| O.R.B. = OFFICIAL RECORDS BOOK | CARV = CABLE TELEVISION |
| | R= RADIUS |

| | |
|-----------------------------|----------------------|
| ○ = NAIL AND DISK SET | ○ = UTILITY POLE |
| ■ = CONCRETE MONUMENT FOUND | ○ = VALVE |
| ■ = IRON ROD & CAP FOUND | ○ = LIGHT POLE |
| ■ = IRON ROD FOUND | ○ = FIRE HYDRANT |
| ○ = IRON ROD AND CAP SET | ○ = DAY WIRE |
| ○ = NAIL & DISK FOUND | ○ = SANITARY MANHOLE |
| ○ = CHISEL CUT FOUND | ○ = SERVICE BOX |
| ○ = 5/8" IRON ROD & ALUM. | ○ = CONTROL BOX |
| R/W MARKER SET PSM NO. 5928 | ○ = TRANSFORMER |

RIGHT-OF-WAY MAP
CENTER ROAD
(JACARANDA BLVD. TO RIVER RD.)

| | |
|---------------------------------------|---------------------|
| PROJ. NO.: 95750, 95782, 95806 | DWG DATE: 5-4-07 |
| SEC: TWP: RGE: | FIELD DATE: 5-11-07 |
| FIELD BOOK 495, PAGE 76 | DRAWN BY: TSO |
| I:\SURVEY\CENTERCIP\RW_MAP_CENTER.DWG | CHECKED BY: ER, WP |

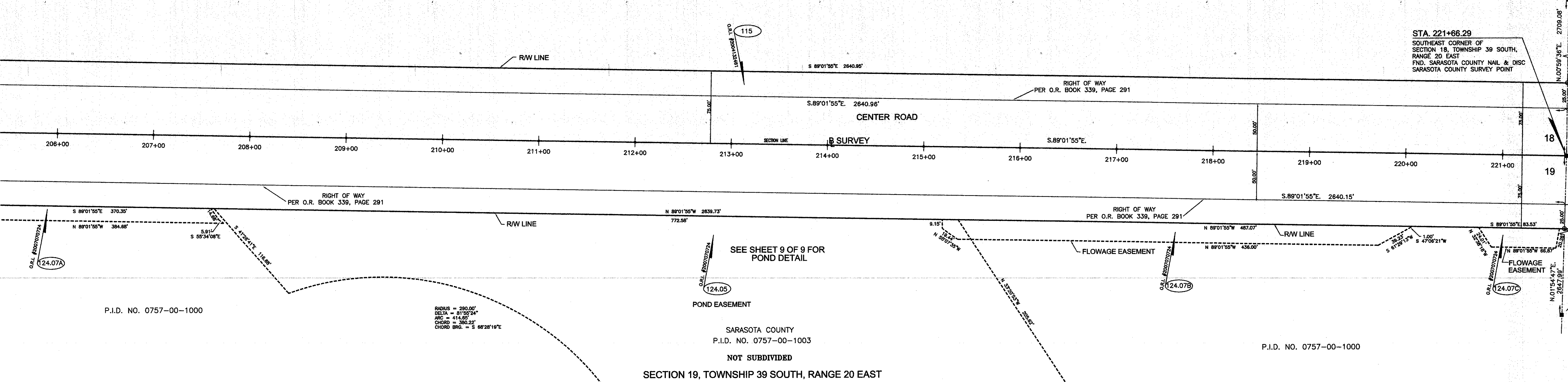
SHEET NO.
6
OF
9

SEE SHEET 6 OF 9 BOTTOM RIGHT FOR CONTINUATION

SEE THIS SHEET BOTTOM LEFT FOR CONTINUATION

SECTION 18, TOWNSHIP 39 SOUTH, RANGE 20 EAST

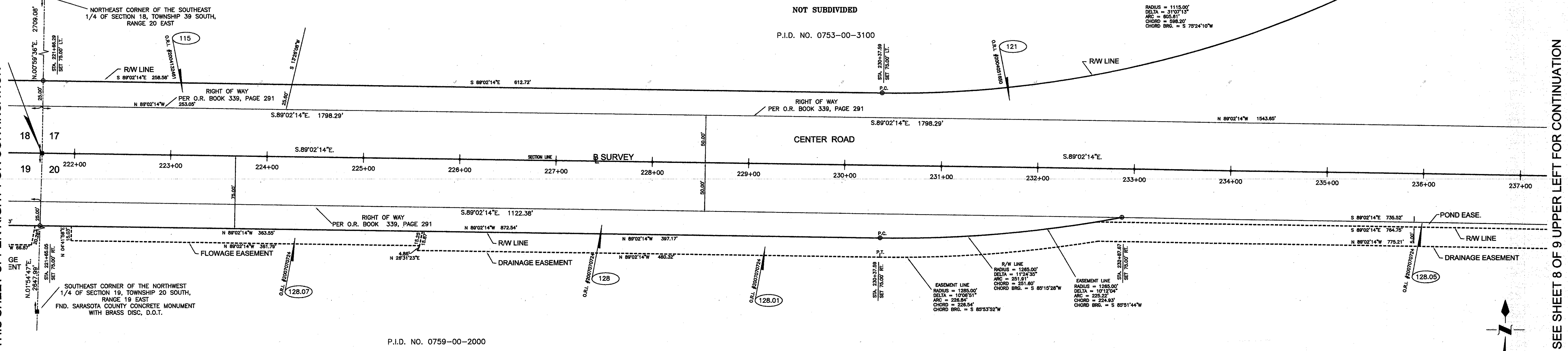
NOT SUBDIVIDED



SECTION 17, TOWNSHIP 39 SOUTH, RANGE 20 EAST

NOT SUBDIVIDED

P.I.D. NO. 0753-00-3100



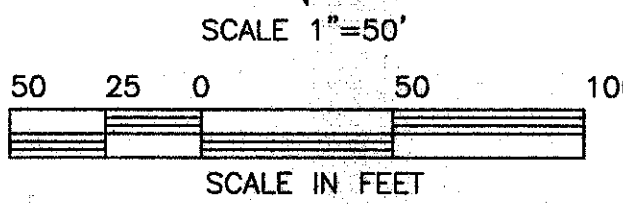
SECTION 20, TOWNSHIP 39 SOUTH, RANGE 20 EAST

NOT SUBDIVIDED

FILED FOR RECORD

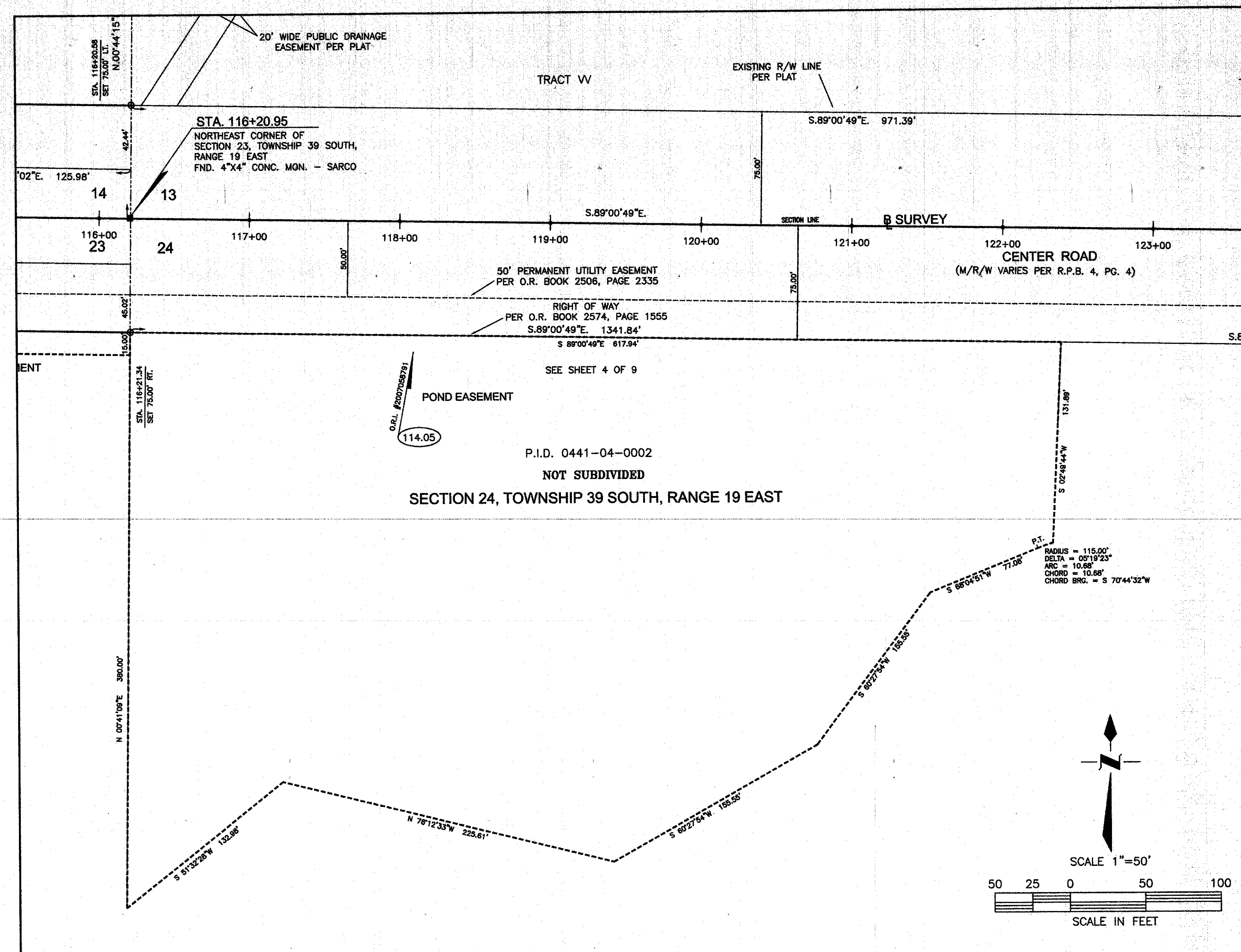
2009 SEP -9 AM 10:46

CLARK E. RICHING
CLERK OF CIRCUIT COURT
SARASOTA COUNTY, FL



SEE SHEET 8 OF 9 UPPER LEFT FOR CONTINUATION

SEE THIS SHEET UPPER RIGHT FOR CONTINUATION



50 25 0 50 100
SCALE IN FEET



| ABBREVIATION | | LEGEND | |
|-------------------------|--|-----------------------------------|-------------------------|
| P.B. = PLANT | | N.O. = PROPERTY IDENTIFICATION | NAD = NAIL AND DISK |
| CONE = CONCRETE | | N.O. NUMBER | L.R. = IRON PIPE |
| MON. = MONUMENT | | R.C.P. = REINFORCED CONCRETE PIPE | L.R. = IRON ROD |
| R/W = RIGHT-OF-WAY | | C.O. = CORRUGATED METAL PIPE | P.W. = TYPE OF PAVEMENT |
| F.O. = FOUND | | T.O.S. = TOP OF SLOPE | D.R. = DRIVE |
| P.D. = MEASURED | | T.O.B. = TOP OF BANK | U.G. = UNDERGROUND |
| P.O. = PAGE | | O.T. = OPEN TRENCH | D.W. = DRAIN |
| R.P.B. = ROAD PLAT BOOK | | F.P. = FLUORIDA POWER & LIGHT | TEMP. = TEMPORARY |
| | | VEG. = VEGETATION | ELEM. = EASEMENT |
| | | CATV = CABLE TELEVISION | RD. = RADIUS |

| | | SYMBOL | | LEGEND | |
|---|--|--------|--------------------|--------|----------------|
| ○ | - NAIL AND DISK SET | Ø | - UTILITY POLE | ⊗ | - VALVE |
| ■ | - CONCRETE MONUMENT FOUND | ⊗ | - LIGHT POLE | ⊗ | - FIRE HYDRANT |
| ▣ | - IRON ROD & CAP FOUND | ⊗ | - GUY WIRE | ⊗ | - METER |
| ● | - IRON ROD FOUND | ⊗ | - SANITARY MANHOLE | + | - CLEANOUT |
| ⊗ | - IRON ROD AND CAP SET | ⊗ | - SERVICE BOX | | |
| ⊗ | - NAIL & DISK FOUND | ⊗ | - CONTROL BOX | | |
| × | - CHISEL CUT FOUND | ⊗ | - TRANSFORMER | | |
| ⊕ | - 5/8" IRON ROD & ALUM. R/W MARKER SET PSM NO. 5926 | | | | |

| | | |
|---------------------------------------|------|------|
| PROJ. NO.: 95750, 95782, 95806 | | |
| SEC: | TWP: | RGE: |
| FIELD BOOK 495, PAGE 76 | | |
| I:\SURVEY\CENTERCIP\RW_MAP_CENTER.DWG | | |

SHEET NO.
8
OF
9

| A B B R E V I A T I O N | | L E G E N D | |
|------------------------------|-----------------------------------|-------------------------|--|
| P.B. = PLAT BOOK | P.I.D. = PROPERTY IDENTIFICATION | N&D = NAIL AND DISK | |
| CONIC. = CONCRETE | N.O. = NUMBER | I.P. = IRON PIPE | |
| R/M = REINFORCED METAL | R.C.P. = REINFORCED CONCRETE PIPE | R.N. = IRON ROD | |
| M.C. = MORTAR | C.M.P. = CORRUGATED METAL PIPE | E.P. = EROSION PIPE | |
| FND. = FOUND | T.O.S. = TIE OF SLOPE | P.V. = EDGE OF PAVEMENT | |
| (P) = PLAT | O.T. = ODE OF TANK | N.D. = DRIVE | |
| (M) = MEASURED | T.B. = TOP OF BANK | U/G. = UNDERGROUND | |
| P.C. = PAGE | O.T. = OPEN TROUGH | DRAIN. = DRAIN. | |
| R.P.B. = ROAD PLAT BOOK | P.F. = FLORIDA POWER & LIGHT | TEMP. = TEMPERATURE | |
| R.F.B. = ROAD FIDUCIARY BOOK | VER. = VERTICAL | EASE. = EASEMENT | |
| | CATV = CABLE TELEVISION | R. = RADIUS | |

| | | SYMBOL | | LEGEND | |
|---|--|--------|------------------|--------|--------------|
| ○ | NAIL AND DISK SET | ⊗ | UTILITY POLE | ⊕ | VALVE |
| ■ | CONCRETE MONUMENT FOUND | ⊙ | LIGHT POLE | ⊗ | FIRE HYDRANT |
| ▣ | IRON ROD & CAP FOUND | ⊗ | GUY WIRE | ⊕ | METER |
| ● | IRON ROD FOUND | ⊗ | SANITARY MANHOLE | + | CLEANOUT |
| ○ | IRON ROD AND CAP SET | ⊗ | SERVICE BOX | | |
| ● | NAIL & DISK FOUND | ⊗ | CONTROL BOX | | |
| X | CHISEL CUT FOUND | ⊗ | TRANSFORMER | | |
| ⊕ | 5/8" IRON ROD & ALUM. R/W MARKER SET PSM NO. 5928 | | | | |

RIGHT-OF-WAY MAP
CENTER ROAD
(JACARANDA BLVD. TO RIVER RD.)

| | | |
|---------------------------------------|---------------------|---------------------------|
| PROJ. NO.: 95750, 95782, 95806 | DWG DATE: 5-4-07 | SHEET NO. 9 OF 9 |
| SEC: TWP: RGE: | FIELD DATE: 5-11-07 | |
| FIELD BOOK 495, PAGE 76 | DRAWN BY: TSO | |
| I:\SURVEY\CENTERCIP\RW_MAP_CENTER.DWG | CHECKED BY: ER, WP | |